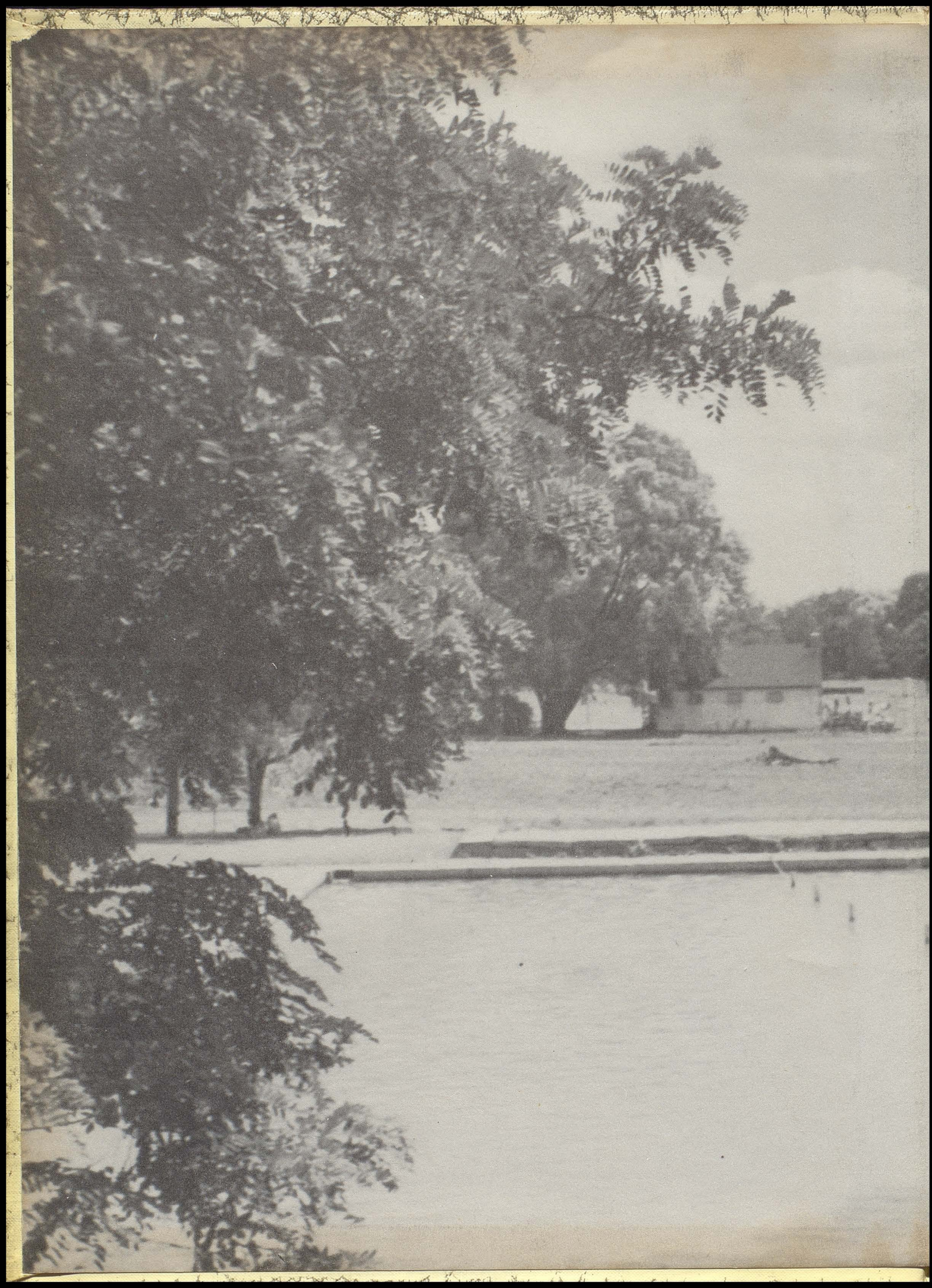


# The Indian

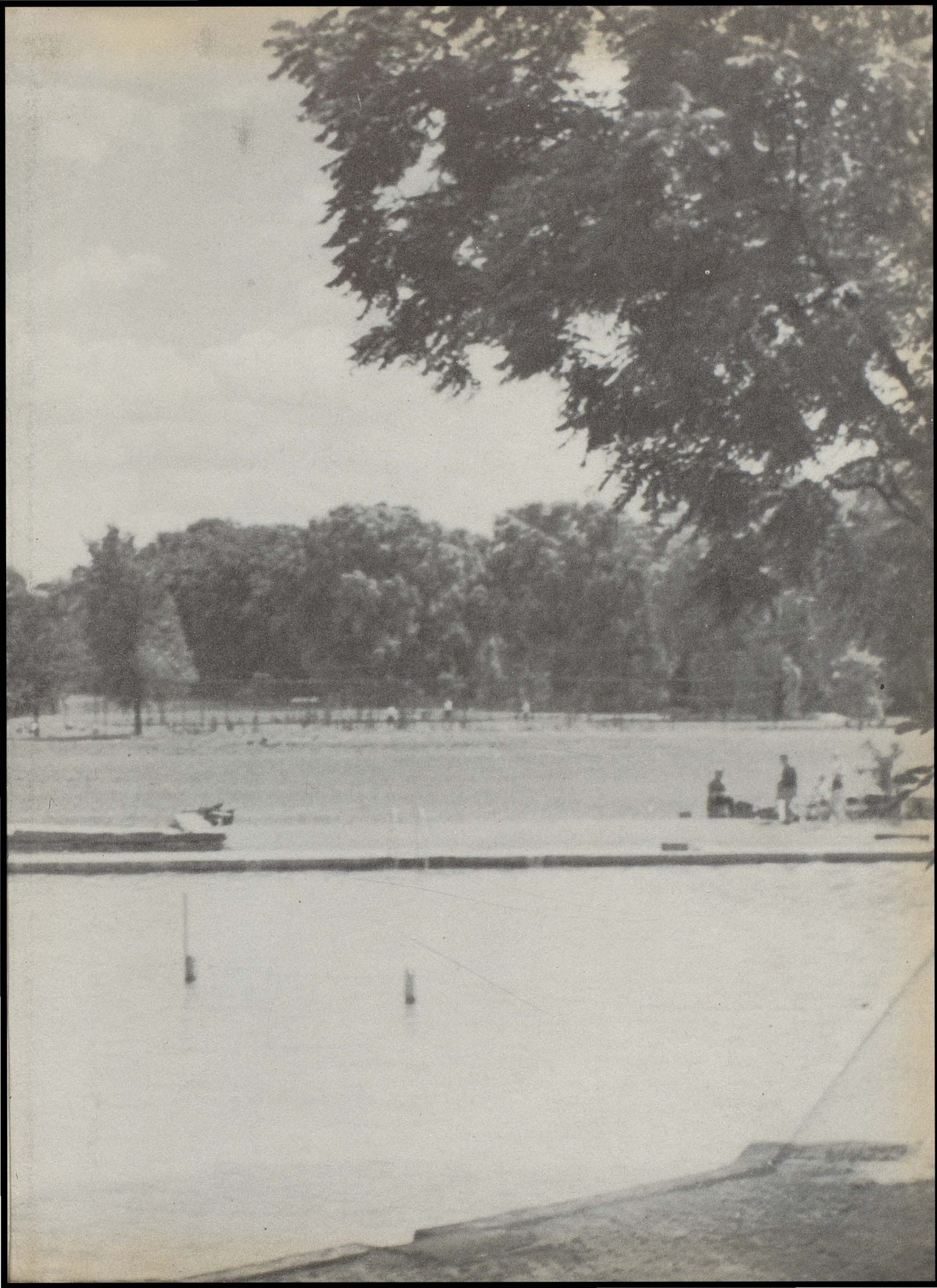
1955



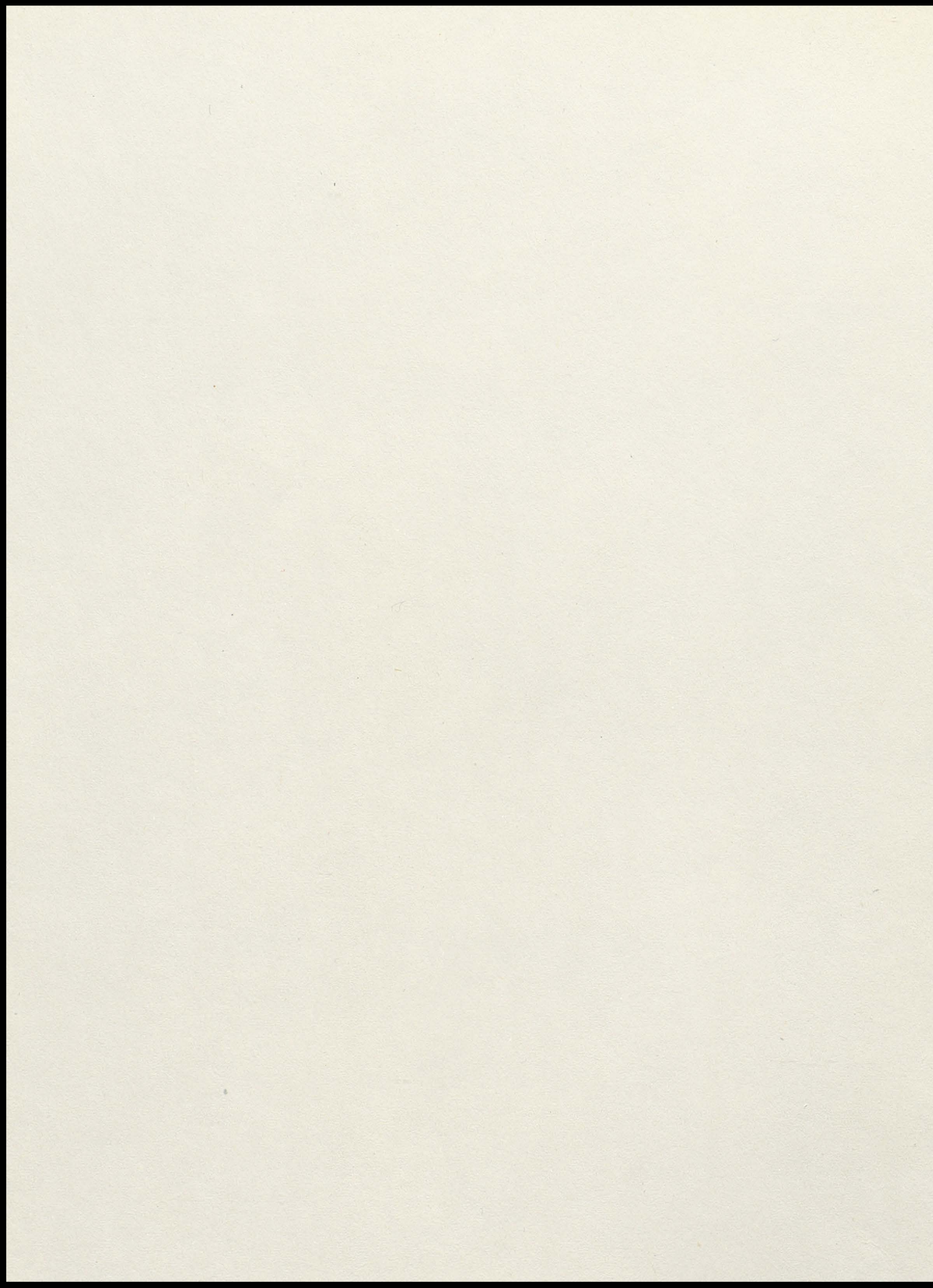














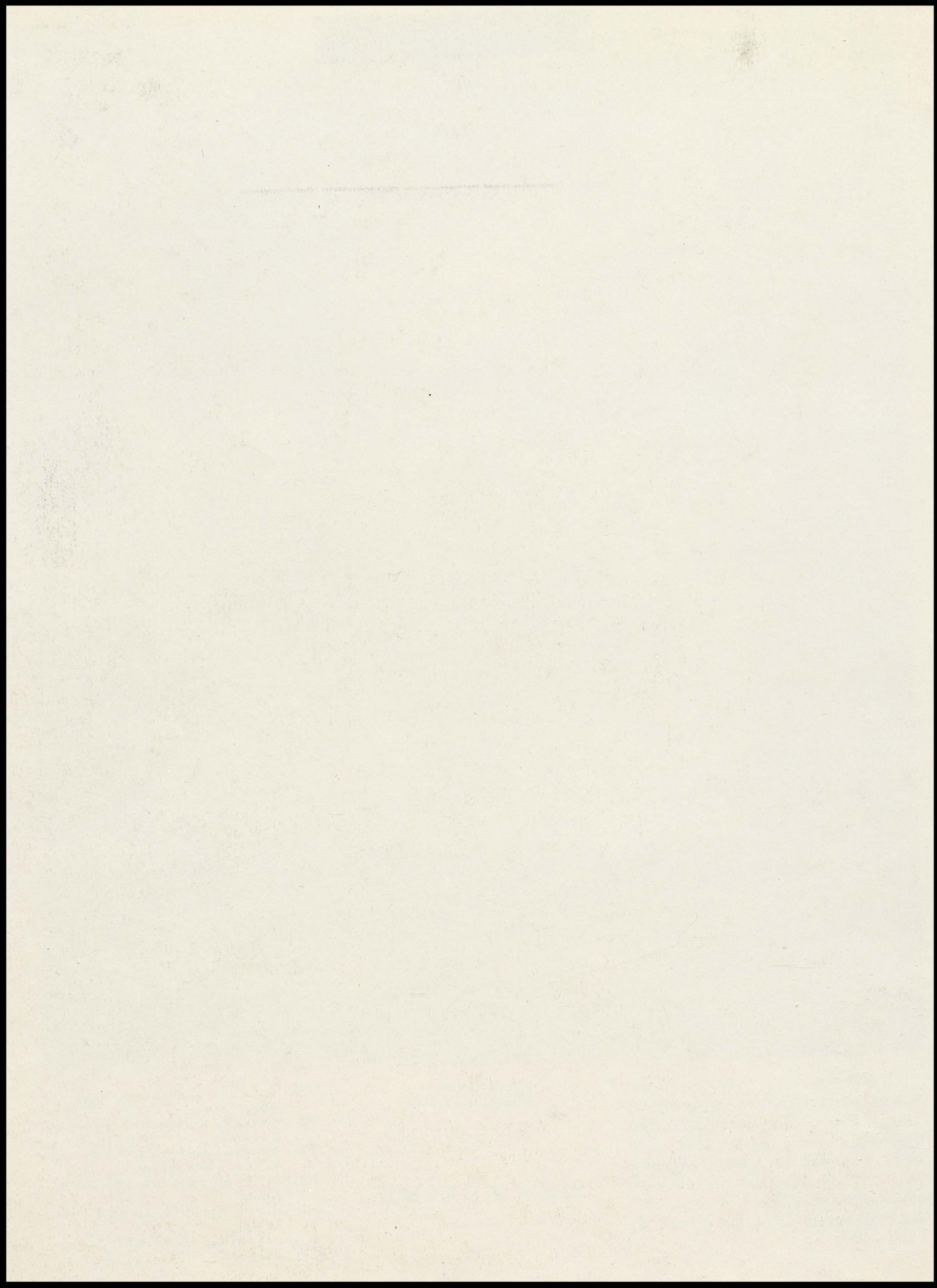


As time passes, others of our class will change--grow wrinkled, gray, and careworn, but Sue will never grow old. She will forever be young and happy, with dimpled smile and eighteen. For Sue "graduated" into eternal life on March 8, 1955.

DEDICATION  
TO  
SUSAN MILLER HANN

And on that cheek and o'er  
that brow  
So soft, so calm, yet elo-  
quent,  
The smiles that win, the  
tints that glow  
But tell of days in goodness  
spent,  
A mind at peace with all  
below,  
A heart whose love is  
innocent.



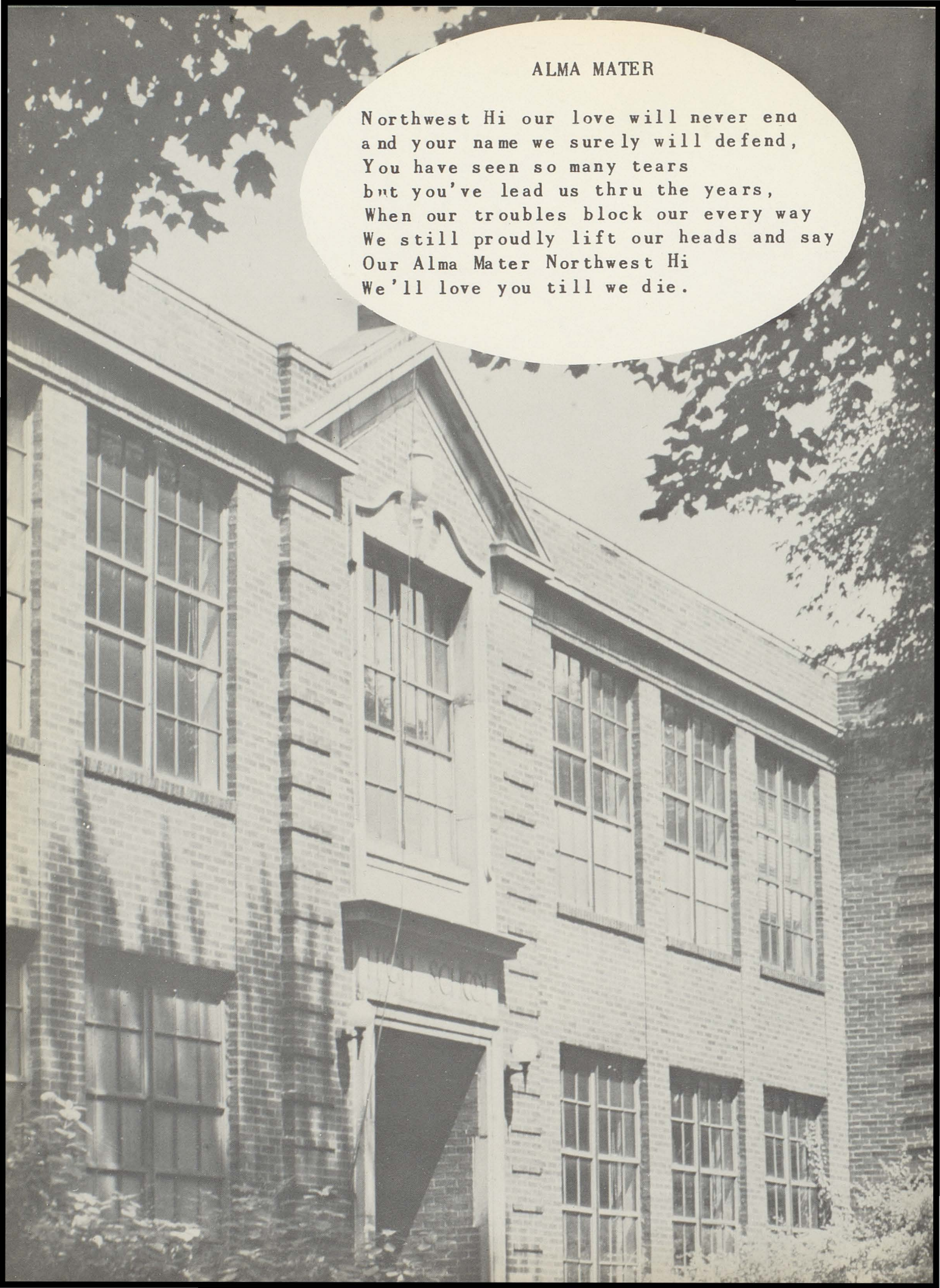






THE  
*Indian*





## ALMA MATER

Northwest Hi our love will never end  
and your name we surely will defend,  
You have seen so many tears  
but you've lead us thru the years,  
When our troubles block our every way  
We still proudly lift our heads and say  
Our Alma Mater Northwest Hi  
We'll love you till we die.





Administration





HARRY L. PELLEY  
SUPERINTENDENT



C.J. McMULLEN  
PRESIDENT

# Board of Education



WILBUR FELLMETH  
VICE PRESIDENT



DON McMILLEN



C. RANDALL KURTZ



CARL SMITH



FRANK CRAWFORD  
CLERK



FRANCES SHOOK  
SCHOOL SECRETARY





PRINCIPAL  
ROBERT KETTER  
Amer. History-P.O.D.

# Faculty



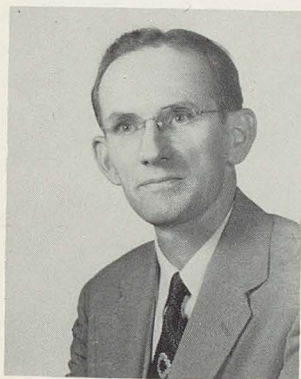
MARY FLETCHER  
Latin-English



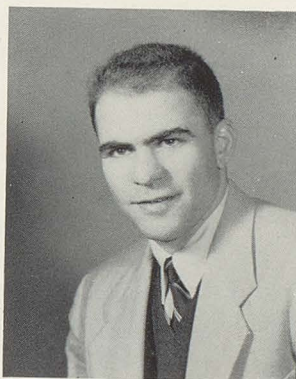
SARAH F. LAWRENCE  
Commercial



STEPHEN LUTHER  
Commerce-History



ROY OBER  
Math-Science



JOSEPH PISANI  
Health-Commerce  
Mech. Drawing



JOSEPH PRATA  
English-Speech



EMIL PUFFENBERGER  
Music



HELEN SIMPSON  
Home Economics



CHARLES STRAUSS  
Science-Math

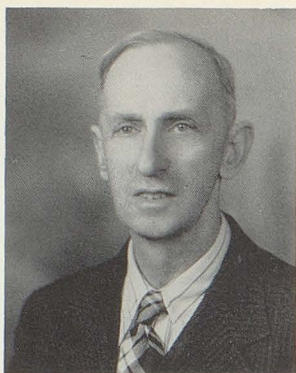


LLOYD SWAN  
Shop-Photography  
Driving-Psychology

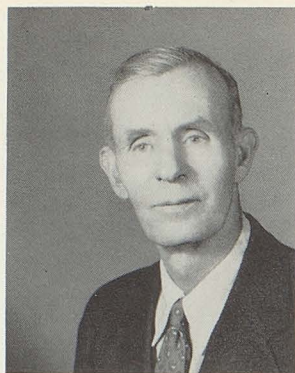


KATHLEEN ZELLMER  
English-Journalism

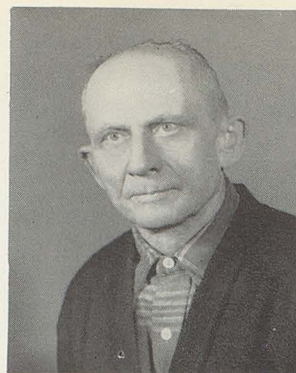




HOMER HAGGERTY  
CUSTODIAN



JOHN COLLINS  
CUSTODIAN



FRANK TOTH  
CUSTODIAN



R. A. HOLE  
BUS DRIVER



NICK VOLK  
BUS DRIVER

# School Employees



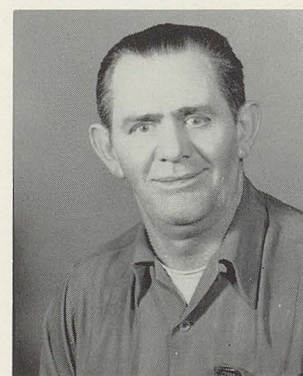
GENE HELLER  
BUS DRIVER



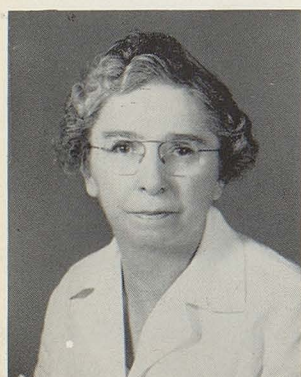
JOHN JUST  
BUS DRIVER



RAYMOND RIES  
BUS DRIVER



CARL SARVER  
BUS DRIVER



CARRIE EARNSBERGER  
CAFETERIA



AMELIA FLETCHER  
CAFETERIA



HELEN MILLER  
CAFETERIA



FLORENCE SMITH  
CAFETERIA



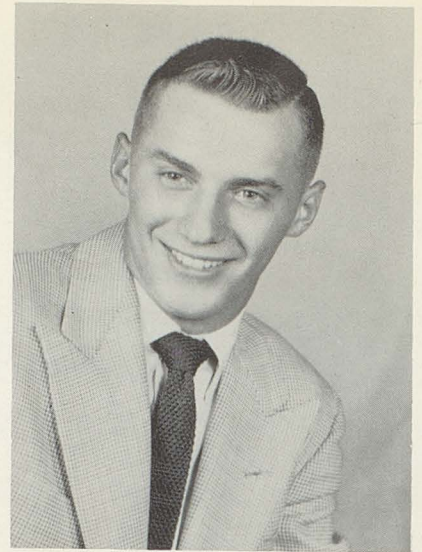


Seniors





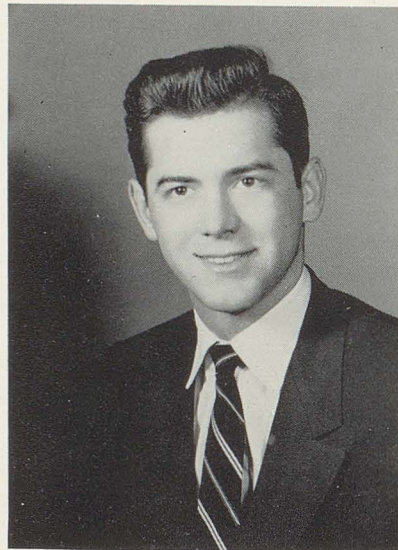
CLIFTON  
PRESIDENT



DON  
VICE-PRESIDENT

MOTTO:  
COOPERATION BRINGS SUCCESS

FLOWER  
WHITE ROSE



MR. SWAN  
SPONSOR

COLORS:  
MAROON AND WHITE

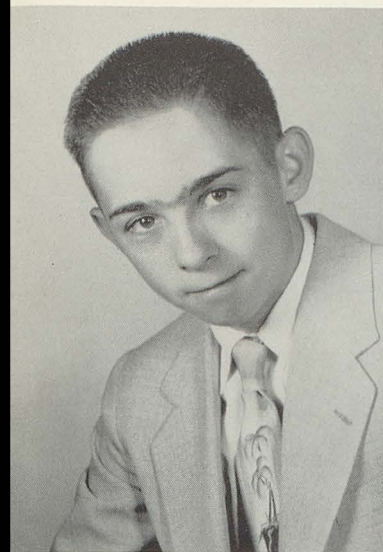
LINDA  
SECRETARY



WILMA  
TREASURER







THOMAS JAMES FOX, JR.  
"Junior"

He's a little lad, but  
he's on his way up.

Projector Club 1-2-3-4  
Football Manager 4



ANN LENORE STEPHAN  
"Nancy"

The work she does is  
nothing but her best.

Y-Teens 1-2  
F.H.A. Club 1-2-3-4  
Glee Club 1-2  
Commercial Club 3-4  
Annual Staff 4  
Newspaper Staff 4



DOUGLAS LEE BRAND  
"Doug"

Everyone knows he's  
quite a lad; he's easy  
going and doesn't get  
mad.

Coventry 1-2  
Basketball 3-4  
Glee Club 4  
Hi-Y 2-4  
Newspaper Staff 4  
Commercial Club 4  
Track 4  
Football 1



JOHN FRANKLIN KUNKLE  
"John"

We gaze and still our  
wonder grew, that one  
small head could carry  
all he knew.

Chorus 1-2-3-4  
Newspaper Co-editor 1-2  
Hi-Y 1-2-3-4  
Hi-Y Secretary 4  
Class President 1  
Class Vice Pres. 3  
Annual Editor 4  
Student Senate Pres. 4  
Band 3-4  
Solo & Ensemble 3-4  
Sophomore Play 2  
Scholarship 1-2-3-4  
Latin Club 2-3



ERNEST BENTON  
BLOOMFIELD  
"Benny"

I exist as I am, and  
that is enough.

Football 1-3-4  
Basketball 1-2  
Track 2  
Hi-Y 3-4  
Varsity Letter Club 4  
Projector Club 3-4  
Annual Staff 4  
Band 1-2-3-4  
Glee Club 1-2-4  
Orchestra 4  
Solo & Ensemble 1-2-3-4



CATHERINE ELIZABETH  
HANSEL  
"Cathy"

Some say Cathy is shy,  
but those who know her  
wonder why.

F.H.A. 1-2-3-4  
F.H.A. Ass't. Treas. 3  
Y-Teens 4  
Band 1-2-3-4  
Solo & Ensemble 3-4  
Class President 1  
Annual Staff 4  
Commercial Club 3-4



FRANK LYNN CAMERON  
"Frank"

Little I ask, my wants  
are few.

Track 1-2-3-4  
Glee Club 1-2-3-4  
Football 1-2  
Band 3-4  
Basketball 1  
Hi-Y 1-2-3-4  
Varsity Letter Club 4  
Solo & Ensemble 3-4  
Orchestra 3-4  
Commercial Club 4  
Projector Club 2  
Annual Staff 4



BARBARA LEE CROWE  
"Barb"

Climb upon my knee,  
lover boy.

Y-Teens 1-2-3-4  
Y-Teens Social Ch. 4  
Band 1-2-3-4  
Majorette 1-2-3-4  
Junior Play 3  
Annual Staff 4  
Latin Club 1-2  
Commercial Club 4  
Solo & Ensemble 1-2-4  
Declamation Contest 2  
Speech & Debate 4  
Glee Club 1





JOYCE MARIE KRAFT  
"Joyce"

In music a charm lies  
hidden for all those  
who can understand.

Band 1-2-3-4  
Band Librarian 1-2-3-4  
Glee Club 1-2-3-4  
Orchestra 1-2-3-4  
Solo & Ensemble 1-2-3-4  
Y-Teens 1-2-3-4  
Y-Teen Music Ch. 3-4  
F.H.A. Club 1-2-3-4  
F.H.A. Parliamentarian 2  
F.H.A. Music Ch. 3-4  
Commercial Club 3-4  
Junior Play 3  
Annual Staff 4



CAROLYN LEE HARTONG  
"Carolyn"

Wait for me.

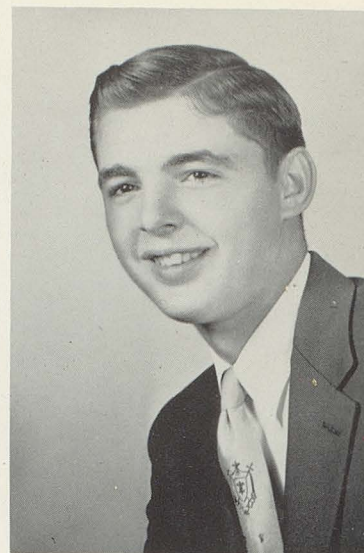
F.H.A. 1-2-3-4  
F.H.A. Publicity Ch. 3  
Y-Teens 4  
Glee Club 2  
Latin Club 3-4  
Commercial Club 4  
Band 1-2-3-4  
Solo & Ensemble 3-4  
Annual Staff 4



JOSEPH EARL WISE  
"Joe"

I'm slow, but I'm  
contented.

Football 1-2-3-4  
Baseball 3  
Track 2  
Hi-Y 3-4  
Varsity Letter Club 4



ROBERT KEITH OSER  
"Bob"

The King of Dairy-  
land.

Basketball 1-2  
Chorus 4



CHARLES GUS CONNOLLY  
"Gus"

I've never dared to be  
as funny as I can.

Baseball 1-2-4  
Basketball 1-2-3-4  
Track 1-2-3-4  
Student Senate 1-4  
Hi-Y 1-2-3-4  
Commercial Club 4  
Sophomore Play 2  
Newspaper Staff 2



LILLIAN GRACE RUEHLING  
"Lil"

Cheerfulness is an ex-  
cellent wearing quality.

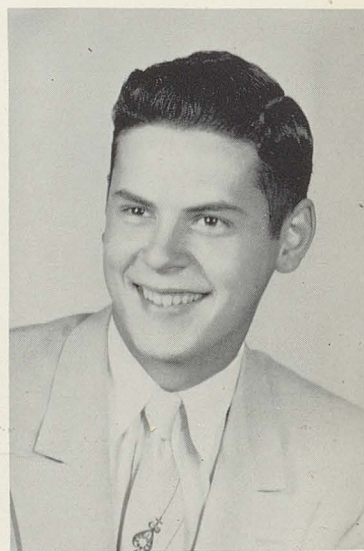
Y-Teens 1-2-3-4  
Y-Teen Devotion Ch. 1  
Glee Club 1-2-3-4  
Latin Club 1-2  
Commercial Club 3-4  
Annual Staff 4



CAROL MARIE SWEIGERT  
"Carol"

Little, peppy, and  
mighty sweet; as a  
friend she can't be  
beat.

F.H.A. 1-3-4  
F.H.A. Ass't. Treas. 4  
Commercial Club 3  
Annual Staff 4



ALBERT ALOYSIUS OTT  
"Al"

All I want is to be  
alone.

Basketball 2  
Glee Club 1-2  
Hi-Y 4  
Projector Club 4  
Annual Staff 4





DONALD EUGENE SINGER  
"Don"

Men of few words are  
best men.

Scholarship 1-3



EDWIN WILLIAM DREUREY  
"Chub"

Just give me a car,  
and let the rest of  
the world go by.

Sophomore Play 2  
Football 1-2  
Hi-Y 1-2



SUSAN MILLER HANN  
"Sue"

Sweet and lovely.

Band 1-2-3-4  
Band Treasurer 4  
Glee Club 1-2-3  
Orchestra 3-4  
Solo & Ensemble 2-3-4  
F.H.A. Club 1-2-3-4  
F.H.A. County Parl. 2  
F.H.A. Treasurer 2  
F.H.A. Vice Pres. 3  
F.H.A. President 4  
Y-Teens 1-2-3-4  
Y-Teen Publicity Ch. 3  
Commercial Club 3-4  
Junior Play 3  
Annual Staff 4



LINDA LEE GESAMAN  
"Lynn"

A dream of a Football  
Queen.

Y-Teens 1-2-3-4  
Y-Teen Vice Pres. 3  
Y-Teen President 4  
Band 1-2-3-4  
Glee Club 1  
Student Council 1-2-3  
Student Council Sec. 2  
Cheerleader 2-3-4  
Homecoming Queen 4  
Latin Club 1-2  
Commercial Club 4  
Speech & Debate 4  
Solo & Ensemble 2-3-4  
Junior Play 3  
Band Secretary 4



JANET DAWN HEATHER  
"Jan"

A maiden fair, with  
charm to spare.

Commercial Club 3-4  
Chorus 4  
F.H.A. Club 1-2-3-4  
Essay Contest 3  
Y-Teens 4



RALPH STEDMAN MOORE  
"Ralph"

I would rather be right  
than President.

Football 1-2-3-4  
Basketball 1-2-3-4  
Track 2-3-4  
Hi-Y 3-4  
Junior Play 3



MARILYN JO HAMEL  
"Marilyn"

I may not say much,  
but thoughts are  
deep.

Y-Teens 1-2  
Commercial Club 3-4  
Chorus 1-2  
Newspaper Staff 1-2



FORREST DEWAYNE MOBLEY  
"DeWayne"

He's a jolly good fel-  
low.

Newspaper Staff 4





MARVIN EDWARD  
HARDGROVE  
"Marv"

Many have something.  
Marv has everything.

Basketball 1-2-3-4  
Football 2-3-4  
Track 2  
Baseball 3  
Band 1-2-3-4  
Orchestra 2-3  
Commercial Club 4  
Varsity Letter Club 4  
Hi-Y 3-4  
Student Senate 1  
Annual Staff 4  
Junior Play 3  
Solo & Ensemble 1-2-3-4



NICHOLAS NOTCH, JR.  
"Nick"

She can have her will,  
but I will have my way.

Football 1-2-3-4  
Basketball 1-2-3  
Baseball 3-4  
Hi-Y President 4  
Varsity Letter Club 4  
Var. Let. Club Pres. 4  
Track 1-2-3-4  
Commercial Club 4  
Projector Club 3-4  
Annual Staff 4  
Solo & Ensemble 1-2-3-4  
Band 1-2-3-4



MARTHA ANNE REECE  
"Anne"

She does a lot without  
much noise.

Scholarship 1-2-3  
Y-Teens 1-2  
Commercial Club 3-4  
Sophomore Play 2  
Mixed Chorus 1-2  
Girl's Glee Club 1-2  
Annual Staff 4



HAZEL IRENE MIDDOUR  
"Hazel"

Stay me not, I'm a busy  
woman.

Garfield 1-2  
Y-Teens 3-4  
Chorus 1-2  
Commercial Club 3-4



WILLIAM HENRY STOCKERT  
"Bill"

William Stockert is his  
name. We know his bril-  
liance will gain him fame.

Band 1-2-3-4  
Band Vice President 4  
Glee Club 1  
Orchestra 1-2-3-4  
Class Vice President 1  
Latin Club 1-2  
Commercial Club 4  
Scholarship 1-2-3  
Solo & Ensemble 1-2-3-4  
Football 3-4  
Track 3



PEGGY LOU NELL  
"Peg"

Generally speaking,  
Peggy is generally  
speaking.

Barberton 1-2  
Latin Club 1-2  
Commercial Club 4  
Y-Teens 1-2-3-4  
Annual Staff 4  
Student Senate 4  
Glee Club 1-2  
Class Secretary 1  
Librarian 1



WILMA JEAN SNYDER  
"Willie"

She's one of the girls  
from N.H.S. who's full  
of life and full of jest

Mt. Eaton 2-3  
Commercial Club 4  
F.H.A. 1-2-3-4  
Glee Club 1-2-3-4  
Class Treasurer 4  
Newspaper Treasurer 4  
Treasurer of Ath Assn. 2  
Cheerleader 3  
F.H.A. Treasurer 3  
Junior Play 3  
Latin Club 2-3



BETTY JANE LAWRENCE  
"Betty"

She came to school with  
one thought in mind, to  
get all the education  
she could find.

F.H.A. Club 1-2-3-4  
F.H.A. Treasurer 3  
F.H.A. County Rep. 3  
Glee Club 2  
Ass't. Annual Editor 4  
Bus. Man. School Paper 4  
Junior Play 3  
Commercial Club 3-4  
Scholarship 2-3





**VIVIAN LENORE WENGER**  
"LeNore"

Happy go-lucky and fancy free, that's the way she'll always be.

Newspaper Staff 1-2  
Latin Club 2  
Commercial Club 3-4



**DELORES JEAN GABLER**  
"Dee"

Although her school work is always done, she still has time for lots of fun.

Latin Club 2  
Y-Teens 1-2-3  
Mixed Chorus 1-2  
Girls Glee Club 1-2  
Commercial Club 3-4  
Newspaper Staff 1-2



**BETTY CLARETTA RIES**  
"Betty"

Betty is a girl we all admire; of her presence we never tire.

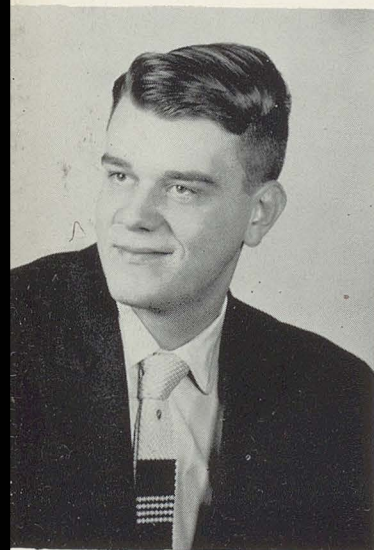
Class Treasurer 2  
F.H.A. Club 1-2-3-4  
F.H.A. Reporter 3  
Band 1-2-3-4  
Solo & Ensemble 1-2-3-4  
Commercial Club 3-4  
Scholarship 3  
Annual Staff 4



**DON DAVID DOUGLAS**  
"Don"

He knows his place and purpose, and performs each duty well.

Football 3-4  
Track 2-3-4  
Baseball 3  
Band 1-2-3-4  
Orchestra 1-2-3-4  
Annual Staff 4  
Student Senate 1-2-3  
Band President 4  
Junior Play 3  
Varsity Letter Club 4  
Solo & Ensemble 1-2-3-4  
Hi-Y Vice Pres. 4  
Commercial Club 4  
Hi-Y 3-4



**HOWARD ALVERIS LINDEMAN**  
"Lindy"

Sportland is his kingdom.

Basketball 1-2-3-4  
Hi-Y 1-2-3-4  
Hi-Y Sargeant at Arms 4  
Varsity Letter Club 2-4  
Boys Glee Club 1  
Mixed Chorus 1-2  
Projector Club 1-2-3-4



**JUDITH ANN WILHELM**  
"Judy"

What's behind those quiet ways?

Girls Glee Club 1  
Mixed Chorus 1-2  
Latin Club 2  
Scholarship 1-2  
Y-Teens 1-2-3  
Newspaper Staff 1-2  
Snowball Attendant 3  
Commercial Club 3-4  
Annual Staff 4



**DARLENE DELORES DIGMAN**  
"Darlene"

We were glad to have you with us, even if it were just for a year.

Doylestown 1-2-3  
G.A.A. 2-3  
Chorus 1-2-3-4  
Scholarship 1-2  
Student Council Sec. 3  
F.H.A. 1-2-3-4  
Y-Teens 4  
Newspaper Staff 4



**NANCY MARLENE SICKLER**  
"Nancy"

Happy and carefree she goes on her way, what she'll do next, one never can say.

Y-Teens 1-2-4  
Commercial Club 3-4  
Girls Glee Club 1-2  
Chorus 1-2  
Annual Staff 4  
Sophomore Play 2  
Cheerleader, Reserve 2  
Newspaper Staff 1-2





SANDRA JANE WALSH  
"Sandy"

Because of her sweet loving way, she'll have many a happy day.

- Secretary of Class 1
- President of Class 2
- Student Council 1-2
- Co-Editor School Paper 1-2
- Plays 1-2-3
- Oration Contest 3-4
- Band 3-4
- Solo & Ensemble 3-4
- Orchestra 3-4
- Commercial Club 3-4
- Y-Teens 1-2-3-4
- Cheerleader 1-2-3-4
- Annual Staff 4
- Varsity Letter Club 4



ERMA JEAN KNIGHT  
"Erma"

She packs her troubles in a box, then sits on the lid and turns the lock.

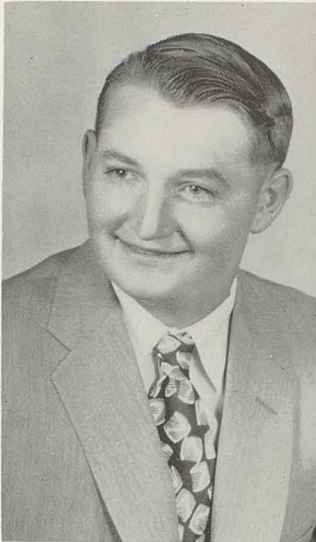
- Chorus 1-2
- Newspaper Staff 1-2
- Commercial Club 3-4



RUTHANNE FRICKE  
"Freak"

To know her is to like her.

- Y-Teens 1-2-3-4
- Glee Club 1
- Commercial Club 3
- F.H.A. Club 1-2



PETER EDWARD SCHILLING  
"Pete"

About Pete this we must confess; at farming he is one of the best.

- Basketball 2-4
- Football 4
- Scholarship 3



JANET LEE JOHNSON  
"Jan"

A good heart is better than great fame.

- Y-Teens 1-2-3-4
- F.H.A. 3-4
- F.H.A. Treasurer 4
- Glee Club 1-2-3-4
- Commercial Club 3



CLIFTON LEONARD SMITH  
"Clif"

One of Northwest's best.

- Class President 3-4
- Pageant 3
- Junior Play 3
- Hi-Y 3
- Football 4
- Annual Staff 4
- Commercial Club 3-4
- Declamation Contest 3



HAZEL MAE ROSS  
"Hazel"

Well versed in the meaning of the word quiet.

- Glee Club 2-3-4
- Y-Teens 3-4
- Y-Teen Craft Ch. 4
- F.H.A. Club 3-4
- Latin Club 2
- Pageant 3



RUSSELL WILLIAM MITCHELL  
"Rusty"

Slow moving, but a mighty fine boy.

- Glee Club 1-2-3-4
- Hi-Y 2-3-4
- Projector Club 4

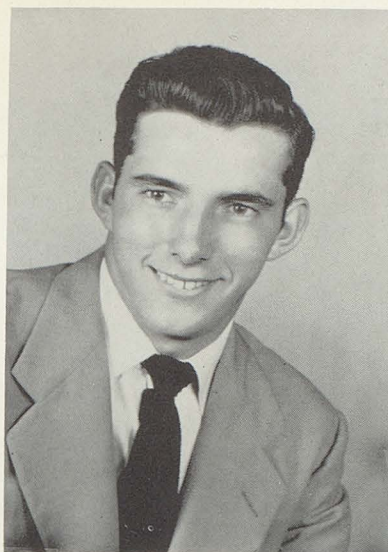




ROGER RICHARD WILHELM  
"Jug"

A moment's thinking is  
an hour in words.

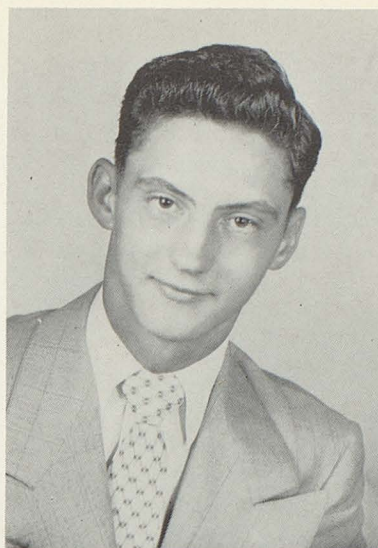
Basketball 1  
Annual Staff 4  
Sophomore Play 2  
Hi-Y 4



RONALD LEE McCLAY  
"Buck"

I have fought a good  
fight; I have finished  
my course.

Football 1-2-3-4  
Basketball 1-2-3  
Hi-Y 3-4  
Hi-Y Treasurer 4  
Varsity Letter Club 4  
Class Secretary 2



JOHN MARVIN WEAVER  
"Johnny"

Who said hurry? Live  
slowly, it feels better.

Glee Club 1  
Band 1-2-3-4  
Football 2-3-4  
Basketball 1-2-3-4  
Baseball 3-4  
Hi-Y 3  
Projector Club 3-4  
Varsity Letter Club 4  
Annual Staff 4  
Solo & Ensemble 1-2-3-4



MARILYN LOIS SIMONS  
"Si"

Of giggling I am oft  
accused, for frequently  
I am amused.

Band 1-2-3-4  
Majorette 1-2-3-4  
Solo & Ensemble 1-2-3-4  
F.H.A. Club 1-2-3  
F.H.A. Ass't. Treas. 2  
Y-Teens 1-3-4  
Y-Teen Centennial Ch. 4  
Latin Club 3-4  
Latin Class Sec. 4  
Scholarship 1-3  
Junior Play 3  
Annual Staff 4  
Snowball Queen 4



BARBARA ANN HAMMIL  
"Ann"

So quiet and shy, well  
at least I used to be.

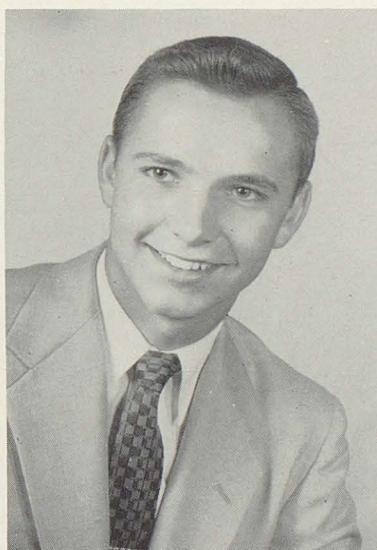
Mixed Chorus 1-2  
Commercial Club 3-4  
Y-Teens 1-2-3  
Sophomore Play 2  
Junior Play 3  
Newspaper Staff 1-2  
Annual Staff 4



RUTH EILEEN NIDA  
"Ruth"

I am not born for one  
corner; the whole  
world is my native  
land.

Y-Teens 1-2-3-4  
Chorus 1-2  
Girls Glee Club 1-2  
Commercial Club 3-4  
Newspaper Staff 1-2  
Cheerleader 1-2  
Sophomore Play 2  
Class Vice President 1-2



LAWRENCE LEONARD BYRON  
"Larry"

At basketball Larry is  
quite a star, in ath-  
letics he will go far.

Baseball 1-2-3-4  
Basketball 1-2-3-4  
Glee Club 1  
Student Council 2  
Sophomore Play 2  
Hi-Y 1-4  
Commercial Club 4  
Varsity Letter Club 2-4  
Essay Contest 3  
Baseball Captain 2-3  
School Paper 2



MARLENE BODNAR  
"Marlene"

A beauty rare, with  
pretty dark hair.

Chorus 1-2  
Cheerleader 1-2-4  
Sophomore Play 2  
Commercial Club 3-4  
Basketball Attendant 2  
Football Attendant 4  
Y-Teens 1-2-3-4  
Newspaper Staff 2  
Varsity Letter Club 4





MUSIC



# Annual Staff



SPORTS



EDITOR



ASSISTANT  
EDITOR



ART



PICTURES



SENIORS



ADVERTISING





**Underclassmen**



# Juniors

Fred Remark, President  
Barbara Zimmerman, V. Pres.  
Carol Miller, Secretary  
Ann McMillen, Treas.

Beverly Barber  
Gladys Benson  
Ruth Bogard  
Carol Cameron  
John Cameron  
Barbara Campbell

Cherie Cuthbert  
Robert Denison  
Doris DeWalt  
Barbara Dittmer  
David Duncan  
Nancy Dye  
Ralph Eberly

David Ferdinand  
Roger Fricke  
Mary Lou Gaddis  
Ann Gatchell  
Paul Gegner  
Mary Gesaman  
Shirley Gesaman

Betty Gill  
Sue Greene  
Esther Hann  
Robert Hardman  
Robert Hartong  
Jim Hiltbrand  
Jim Jones

John Just  
Nick Kechkes  
Floyd Kirkpatrick  
Janet Knight  
Michael Korom  
David Krnach  
Linda Matthews

Rex McGregor  
Dorcas Ochsenbein  
Pat Ogg  
Alberta Ott  
Janice Patris  
Norma Petty  
Bill Pratt

Ann Preece  
George Reffner  
Mary Ries  
Lauren Rohr  
Mary Lou Sarver  
Ray Schembechler  
Jerry Semelsberger

Darlene Sense  
Paul Sich  
Robert Smith  
Donna Mae Smith  
Mary Jo Smith  
John Stewart  
Glen Strosaker

Bill Taylor  
Alan Thorn  
Mary Jane Volk  
Jack Walsh  
Harlan Weygandt  
Jerry Whetstone  
Ruth Whisler





# Sophomores



Marie LeBerth, Pres.  
Tom Culp, V. Pres.  
Sharon Gilcher, Sec.  
Margie Wilhelm, Treas.  
Joanne Appleman  
Sonja Artrip  
Judy Beaber

Robert Blachly  
Rita Bloomfield  
Lucille Boak  
Janice Cameron  
Robert Connolly  
Sue Cuthbert  
Mildred Daniels

Mary Ann Decker  
Janice Digman  
Alma Edwards  
Earl Finney  
Ann Fletcher  
Virginia Fox  
Judy Fudge

Richard Gindlesberger  
Robert Gindlesberger  
Jack Haney  
Richard Hardman  
Rosella Hartman  
Bonnie Hartong  
James Hood

Lois Hoover  
Jack Juersivich  
Bob Ketler  
Dean Kirkpatrick  
Terry Kroger  
Alfred Lindeman  
Alice Markus

Rita Matthews  
Bill McDavitt  
Judy Moke  
Sandra Moore  
Sandra Neal  
Jerry Nettle  
Jerry Nicholas

Charles Nida  
Richard Norris  
Carol Otto  
Nancy Paul  
Larry Pratt  
Helen Reece  
Thomas Reighart

Roger Rohr  
Richard Schilling  
Albertine Seifert  
Robert Shafer  
Johnny Shondel  
Jack Shonk  
Elizabeth Siber

Gene Sliger  
Marilee Smith  
Janelle Staver  
Carol Stemple  
Dale Stephan  
William Stinson  
Lois Stockert

Dick Stoughton  
Dick Swisher  
Junior Weber  
William Wells  
Betty Woodring  
James Yannayon  
Rita Young



# Freshmen

Joel Schimke, President  
Margie Mohler, V. Pres.  
Judy Hood, Secretary  
Larry Notch, Treasurer

Raymond Allshouse  
Herbert Blachly  
Donald Blackburn  
Mary Ellen Brigham

Thomas Burger  
Albert Cooley  
Janet Cormany  
Mary Crawford  
Shirley Crawford  
Elda Daniels  
Mary Demales

Argyl Digman  
Jerry Duncan  
Jim Duncan  
Thomas Earnsberger  
Nadine Eckroate  
Joseph Edwards  
Larry Etling

Carol Fellmeth  
Dale Ferryman  
Richard Flake  
Roger Fox  
Marlene Freed  
Kenneth Fricke  
Allard Garren

Gretchen Geier  
Lowell Gesaman  
Robert Gill  
Buddy Hartman  
Janet Hartong  
Judy Heather  
Joyce Hutson

Donald Ketler  
Lyle Kirkpatrick  
Joan Klever  
Gary Leaver  
Pat Logsdon  
Melvin Mansfield  
Robert Mansfield

Earl Minks  
Charlotte Ott  
Ruth Parker  
Philip Perrine  
Joyce Ries  
Wayne Ross  
Elinor Ruehling

Robert Schilling  
Charles Schwiger  
Jim Selch  
Judy Semelsberger  
Kenneth Sick  
Bill Simmons  
Carl Smith

Louise Smith  
Betty Starcher  
Helen St. John  
Thomas Stoll  
John Taylor  
Thomas Tinsler  
Rita Volk

Pat Walsh  
Herbert Wells  
John Wise  
Randall Woodall  
Alice Yannayon  
Donald Young  
Gary Zurschmit







Activities

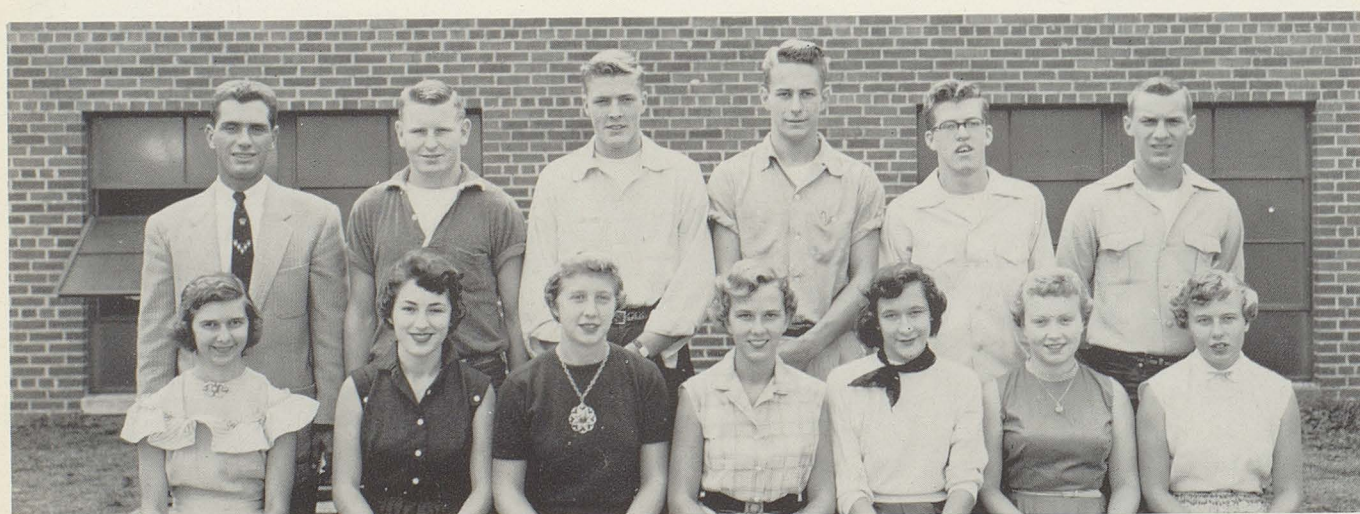




STUDENT SENATE



PROJECTOR CLUB



SPEECH AND DEBATE

COMPLIMENTS OF FULTON SUPER MARKET





NEWSPAPER STAFF



VARSITY N CLUB



LATIN CLUB

COMPLIMENTS OF B & M GRILL





Y-TEENS



FUTURE HOMEMAKERS OF AMERICA



COMMERCIAL CLUB



HI-Y CLUB

COMPLIMENTS OF THE VILLAGE RESTAURANT





**Music**





GLEE CLUB



ORCHESTRA

COMPLIMENTS OF MAJO'S BEAUTY SHOPPE



# CONCERT BAND



DON  
Pres.



LINDA  
Sec.



MR. PUFFENBERGER  
Director



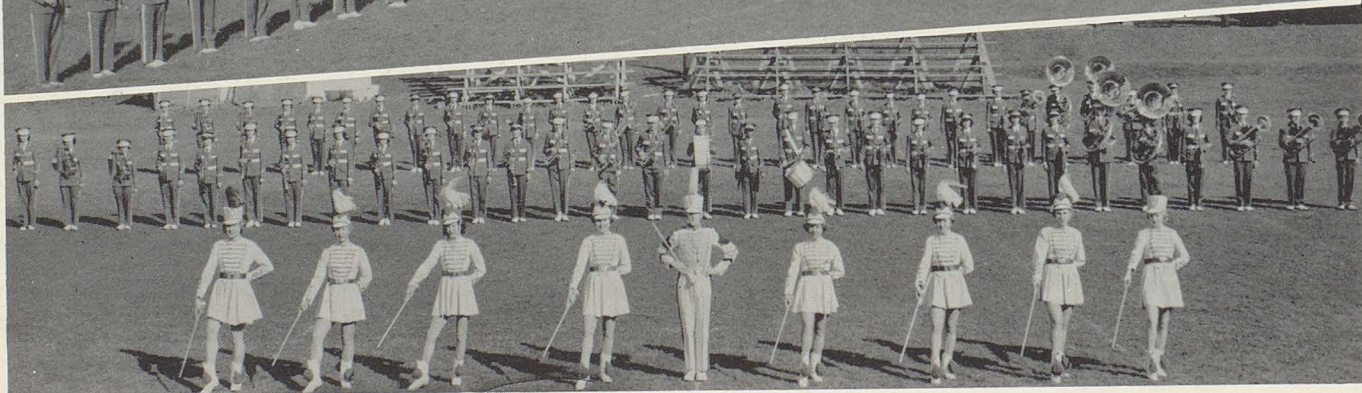
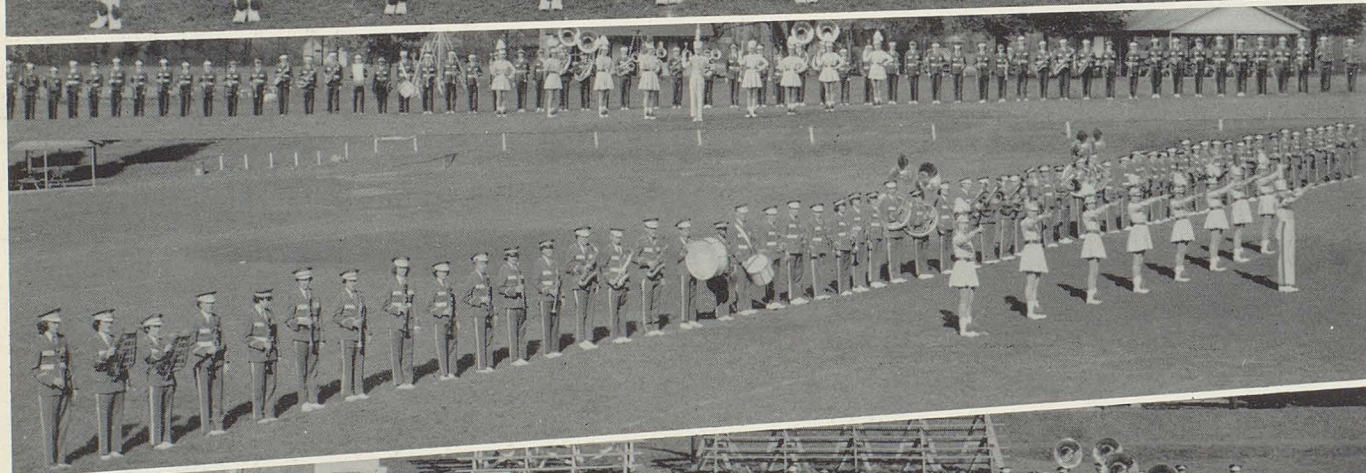
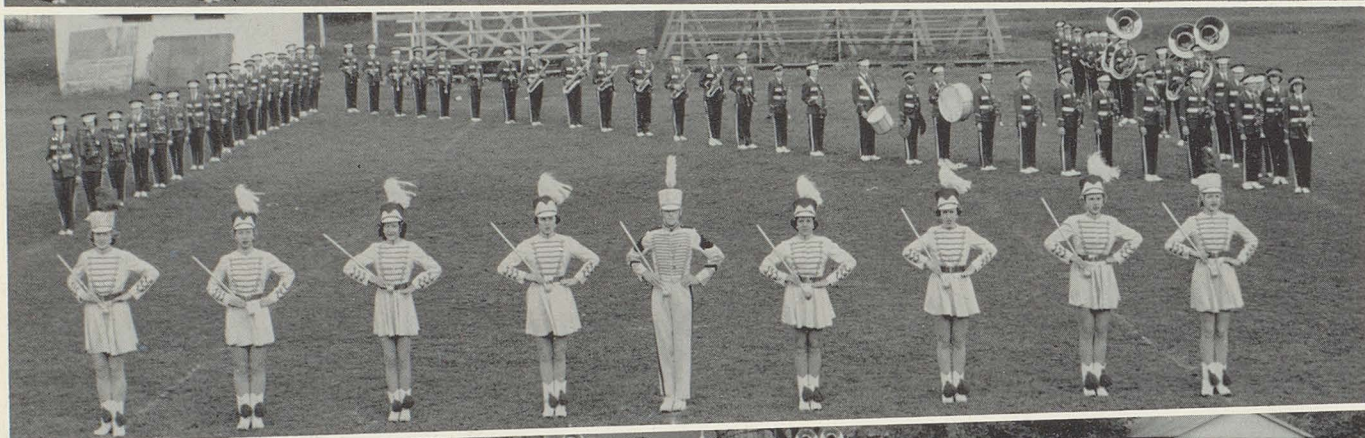
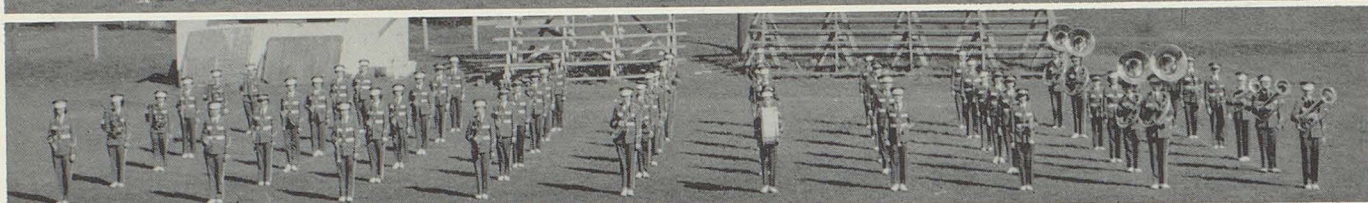
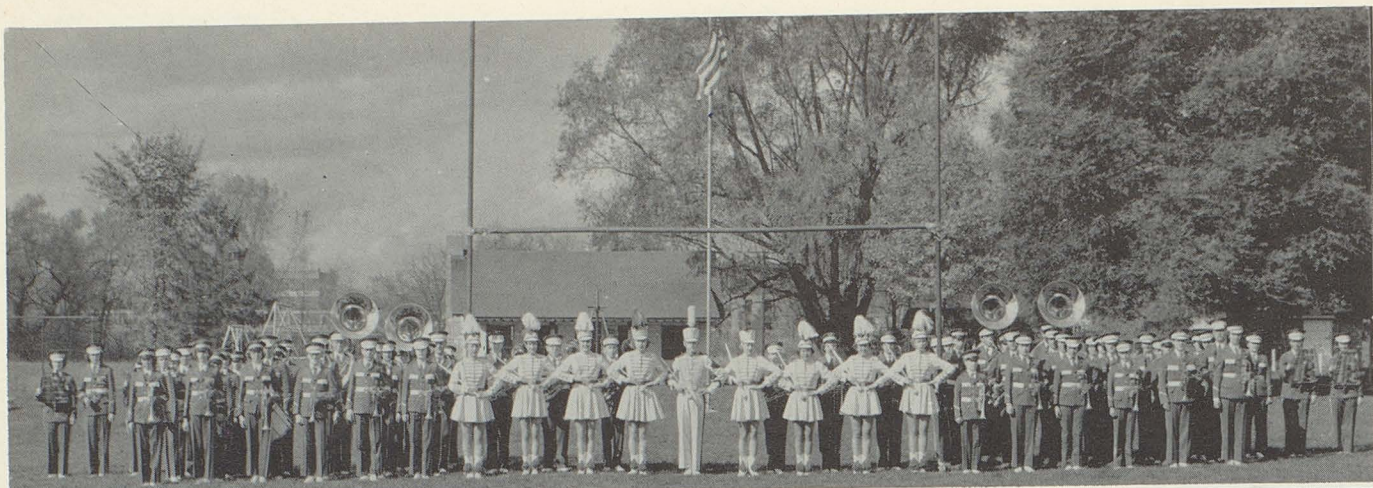
BILL  
V. Pres.



SUE  
Treas.

COMPLIMENTS OF GATTUSO MUSIC CENTER





COMPLIMENTS OF LOGAN'S I. G. A. STORE



# Band Seniors



SUE



MARILYN



BARBARA



BETTY



CATHERINE



CAROLYN



LINDA



JOYCE



SANDY



NICK



DON



MARVIN



FRANK



JOHN



BILL



JOHN



BENNY

COMPLIMENTS OF M. H. RUPE





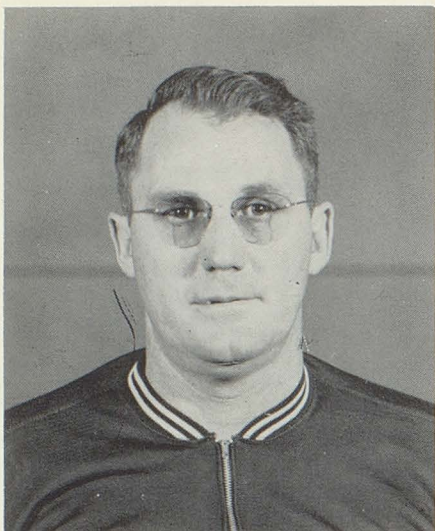
COMPLIMENTS OF BURTON'S DEPARTMENT STORE





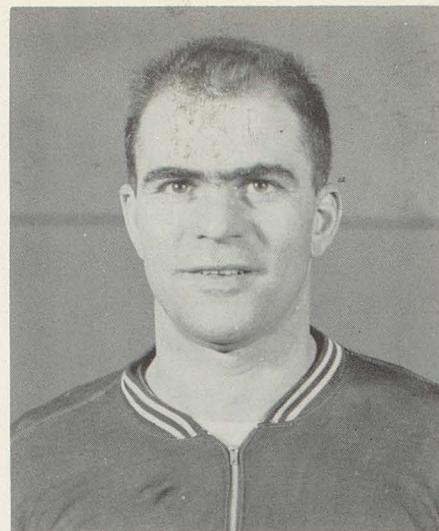
Sports





ROBERT KETTER  
Head Basketball  
Ass't. Football

## COACHES



JOSEPH PISANI  
Head Football  
Ass't. Basketball



CHARLES STRAUSS  
Jr. High Football  
Grade School Basketball



COMPLIMENTS OF ETLING'S RESTAURANT



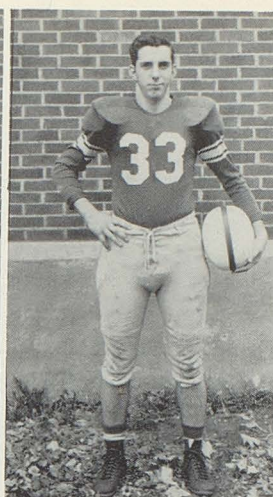


NICK

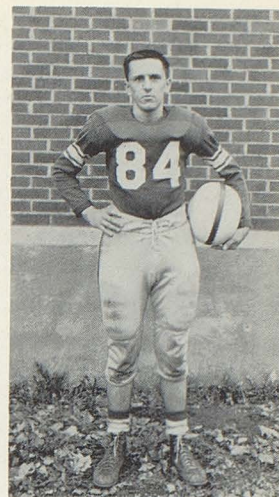
FOOTBALL



JOE



RONNIE



PENNY

SENIORS



BILL  
ALL-COUNTY GUARD

Northwest 0

Northwest 13

Northwest 14

Northwest 6

Northwest 7

Northwest 0

Northwest 13

Northwest 7

Manchester 26

Doylestown 33

Dover St. Joseph 6

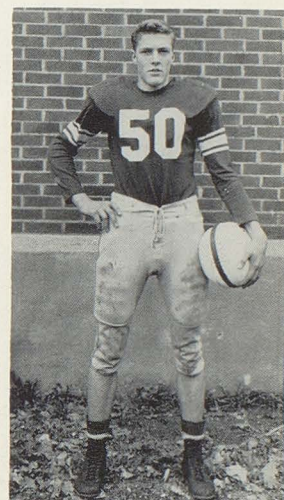
Navarre 20

Sandy Valley 13

Jackson 66

Middlebranch 18

East Canton 18



MARVIN  
ALL-COUNTY END



PETE



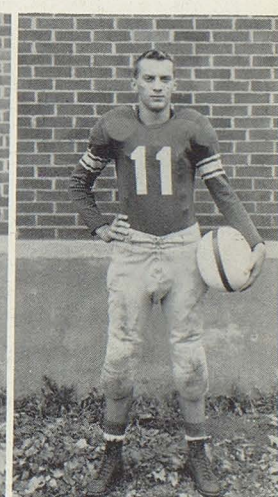
CLIFTON



JOHNNY

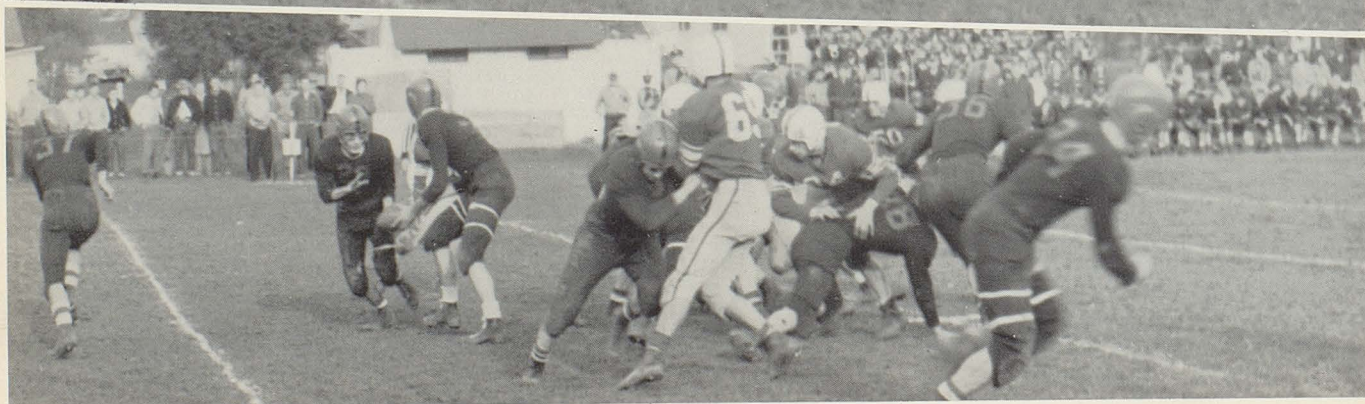
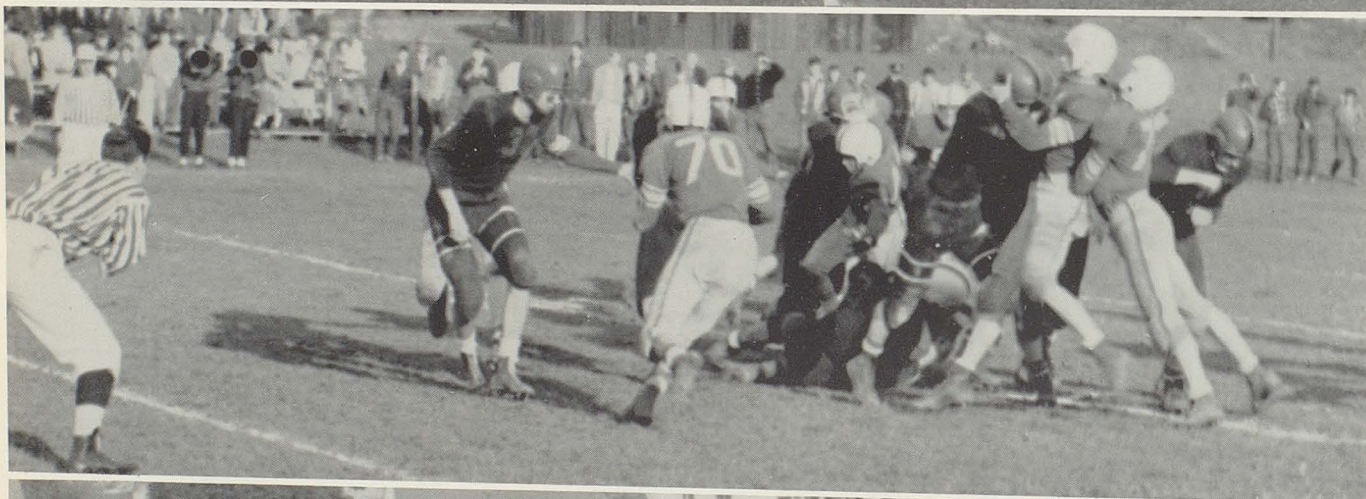
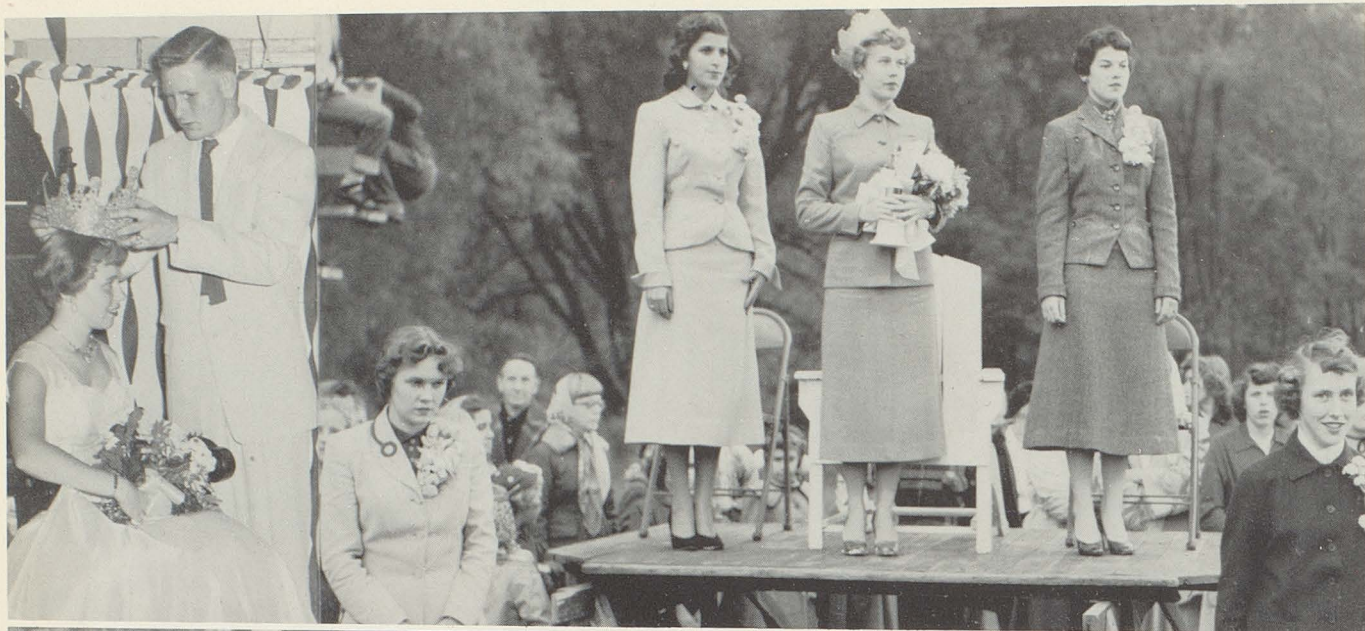


RALPH



DON







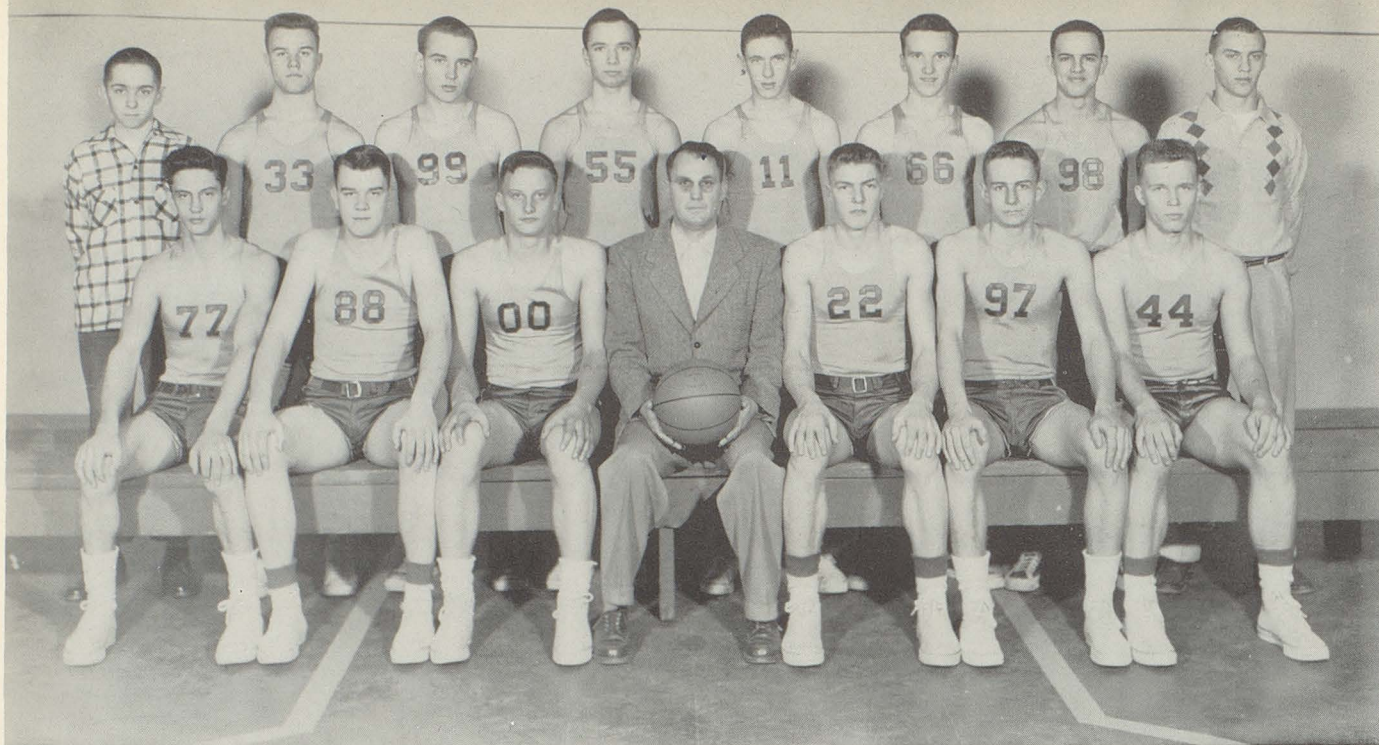


VARSITY



RESERVES



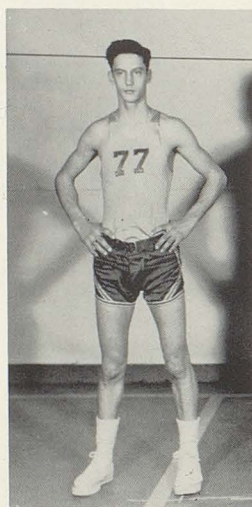


## TOURNAMENT TEAM



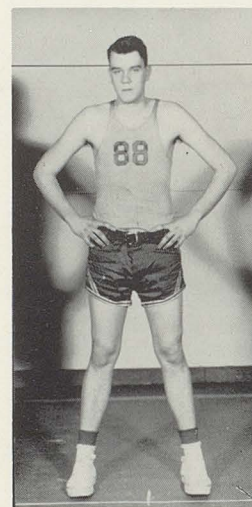
MARVIN

B  
A  
S  
K  
E  
T  
B  
A  
L  
L



JOHNNY

S  
E  
N  
I  
O  
R  
S



HOWARD



LARRY



DOUG

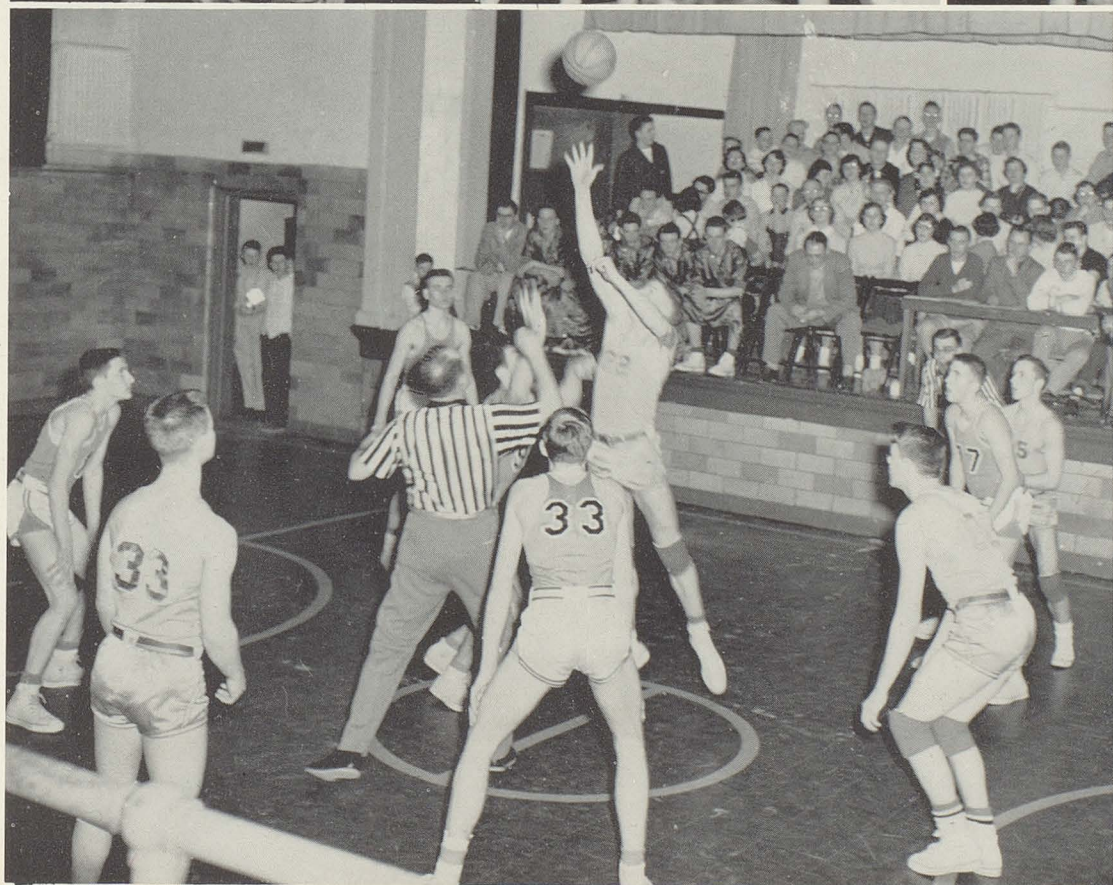
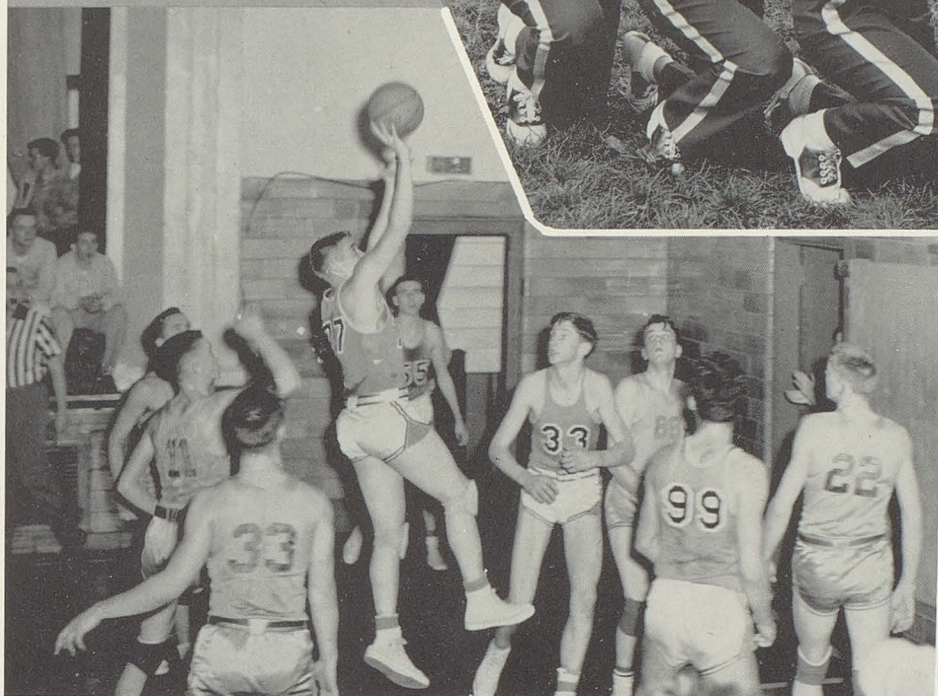
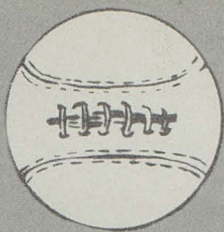


ROGER

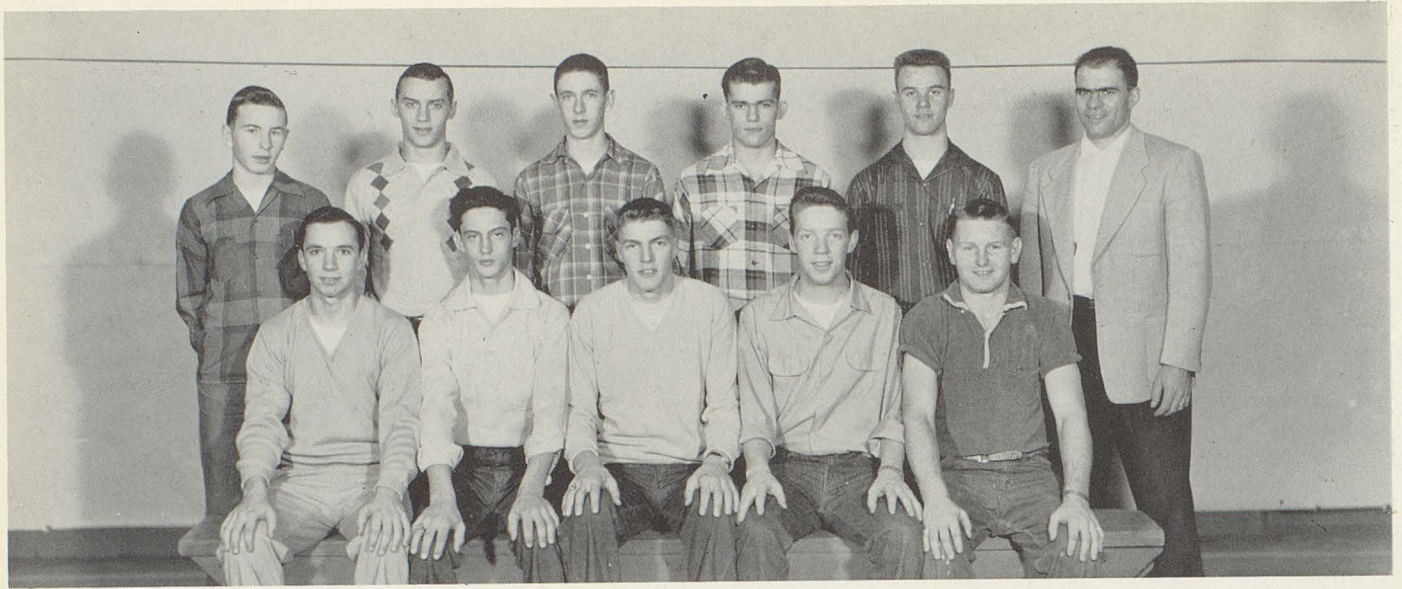


GUS









BASEBALL TEAM



TRACK TEAM







**Grades**



# Canal Fulton Grade School



MR. SUMMERS



MR. MAXWELL



MRS. ROWLAND



MRS. STRAUB



MRS. GREGORY



MRS. HAHN



MRS. SUMMERS



MRS. CARR  
PRINCIPAL



MRS. CUTHBERT



MRS. MOSGROVE



MRS. HANKS



MRS. KETTER





#### EIGHTH GRADE

Fourth Row -- Marion Weygandt, Jerry Truner, Jane Reid, Carson Ripley, Duane Jarvis, Larry Haynes  
Carole Rupe, David Brand, Jacqueline Little, Ronald Ries, Dorothy Parker, Linda Ott.

Third Row -- Wanda Hofstetter, William Fischnick, Clifford Casto, Michael Smith, Judy Just, John Tipple  
Linda Suderow, Effie Breitenstine, Lucretia Fowler, Thomas Otto, Hope Thorn, Richard Dye.

Second Row -- Jennie Hancock, Judith Mann, Georgia Ketter, Miguel Guzman, Nyda Noftsinger, David  
Nicholas, Clifford Mansfield, William Swigart, Thomas Norris, Kenneth Waggoner, Jimmy Finefrock,  
Neil Baker, Mr. Summers.

First Row -- Raymond Ferryman, Donald Miller, Maxine Casto, Barbara Johnson, Richard Schmachtenberger  
Shirley Troyer, Glenn Weber, Robert Jarvis, Ida Taylor, Harry Downey, Karen Ellis, Robert  
Garret.



#### SEVENTH GRADE

Fourth Row -- Mary Alice Moore, Ellen Schimke, Helen Stockert, Frank Shoemaker, Robert Woodall, Henry  
Host, Denny Smail, Norene Browne, Richard Weigand, Charles Hass, Linda Nicholas.

Third Row -- George Alsip, Jimmy Just, Cora Boser, Ronald Williams, Alex Markus, Thomas Gindlesberger,  
Marlene Parker, Marion Stewart, Diane Ketter, Thomas Nicholas, Norman Toppel, Ferrill Smith,  
Judith Snyder.

Second Row -- Ruth Ann Inghram, Shirley LaPorte, Betty Fudge, Marilyn Greene, Vernon Siber, Shirley  
Bish, Vivian Alsip, Sandra Franklin, Loretta White, Marion Fricke, Rita Hann, Ralph Blachly.

First Row -- William Wittman, Thomas Gesaman, Doreen Cuthbert, Raoul Helwig, John Kistner, Dale Slusser,  
Bruce Gesaman, Robert Wagner, Duane Weygandt, Mary Ellen Weidner, James Fellmeth, Ronald Neidert.



#### SIXTH GRADE

Third Row -- Sandra Hammock, Peggy Wood, Florence Reichback, William Green, Walter Johnson, Larry  
Johnson, George Shuman, Newton Bogard, Catherine Lusk, Jerry May, Mary Ries.

Second Row -- Mrs. Carr, Donald Decker, Trini Shonk, Claudia Smith, Kathy Young, Irene Mohler, Mable  
Norris, Joyce Welsch, Carolyn Hass, Gary Hoeft, Jimmy Waggoner.

First Row -- Ramona Guzman, Pauline Dye, Paul Ingram, Linda Sliger, Troynette Roberts, Marilyn Mann,  
Gary Rhoades, Mary Lou Ketter, Sally Lou Sandy, Bobby Tesch, Eddie Markham.





#### FIFTH GRADE

Fourth Row -- David Tipple, Gene Shuman, Ronnie Riggs, Donald Ketler, Frank Browne, Annabel Hancock, Terry Ketler, Harry Bobb, Judy Baker, Wanda Weber, Charlene Waggoner.  
 Third Row -- Glenn Garrett, Beverly Geiger, Carolyn Greenwalt, Evelyn Hann, Tommy Finefrock, Neil Weygandt, Lowell Haggerty, Marcia Swigart, Janet Dewalt, Joan Williams, Brian Cuthbert, Martha Blachly.  
 Second Row -- Marjorie Fischnick, Marilyn Fischnick, Linda Toomey, Catalina Guzman, George Bobb, Donald Hoover, Kenneth Tesch, Ellen Turley, Tana Hartman, Frances Smith, Paul Fox.  
 First Row -- Ruth Ann Baughman, Lois Rupe, Gary Parker, Shirley Ott, Charles Kratt, Sarah Norris, Karen Kirkpatrick, Gary Johnson, Danny Miller, Gene Shuman, Judy Bogard, Mrs. Rowland.



#### FOURTH GRADE

Third Row -- Trudy Hopper, James Wheeler, Raymond Fowler, Clifford Bachtel, Gregory Simmons, Linda Hiltbrand, Sally Slusser, Diana Cullen, Marilyn Neidert, Thomas Casto, Kenneth Tippel, Danny Klais, Kenneth Martin, Robert Moke.  
 Second Row -- Karen Whitman, Mary Nicholas, Dennis Whitman, Peggy Cuthbert, Jackson Roberts, Jacqueline Roach, Bobbie Powell, Marie Bobb, Barbara Shook, Patricia Williams, Richard Myers, Ralph Weigand.  
 First Row -- William Lusk, Thomas Reid, Linda Mohler, Susan Major, David Wagoner, Gale Sellers, Donald Stark, Lois McMillen, Elizabeth Wood, Lawrence Stockert, Rosellen Smith, Karen Stark, Mrs. Straub.



#### THIRD GRADE

Fourth Row -- Michael Durinsky, Sandra Goode, Paulette Levers, Jane Browne, James Garver, Timmy Gesaman, Ronald Mansfield, Richard Root, David Morris, Helen Riggs, Ruth Stark, Russell Findley, Kenneth Cook.  
 Third Row -- Steve Root, Wanda Case, Nancy Jolly, Diana Lepley, Merle Ferryman, James Darkow, Judy Blatti, Gary Johnson, Betty Turley, John Ruehling, Kieth Crawford, Terry Amodio, Kenneth Finefrock.  
 Second Row -- Lee Miller, Sherry Swigart, Joan Fellmeth, Shirley Atkinson, Thomas Neidert, Sheila Rhoades, William Douglas, Eddie Tesch, Lois Haggerty, Virgil Martin, Denny Roach.  
 First Row -- Mrs. Summers, Eileen Fricke, Gary Kaufman, Patricia Hanks, Vera Rohe, Thomas Hardgrove, Violet Reffner, Darlene May, Barbara Ott, Roger Edwards, Donald Brand, Kathy Foster, Mrs. Gregory.





#### SECOND GRADE

Fourth Row -- Carl Smith, Janice Beaber, Roger Root, Glenn Decker, Mary Beth Meibert, Bonnie Weller, Donna Gindlesberger, David Simmons, Eugene Dannemiller, Becky Boyle, Marcella Talalas, Roger Woodall, Christine Laughlin, Becky Lockhart.

Third Row -- Stanley Miller, Teddy McMillen, Dale Jolly, Eddie Hardgrove, Cheryl Harbaugh, Gary Grover, Ronald Reffner, Kay Lepley, Harold Blachly, Lynn Penchalk, Kathy Ellis, Cherie Lucas, Johnny Wheeler, Sandra Haynes.

Second Row -- Richard Garrett, Tommy Middour, Jean Majo, Mildred Dye, Chester Williams, Charles Morgan, Christine Geiser, Carol Ross, Donald Norris, James Tippel, Nancy Angst, Karen Willmann, Larry Bobb, Kathy Smith.

First Row -- Mrs. Mosgrove, John Norris, Sherry Pitz, Alice Ann Roberts, Rosemary Browne, David McClay, Wesley Bogard, Dennis Staver, Johnny Hoeft, Jayne Smith, Margaret Otto, Gregory Chapman, Harold Norman, Loren Witherow Mrs. Cuthbert.



#### FIRST GRADE

Fourth Row -- Larry Boak, Paul Staver, Norma Findley, Jane Everhart, James Rowland, Robert Turley, Dwight Lightfritz, Eugene Neal, Lawrence Cook, Wesley Weygandt, James Dilworth, Ernest Hartong.

Third Row -- Denver Hoops, Peggy Ott, James Connally, Ernest Zeller, Emma St. Clair, George Brown, Karen Riggs, Margaret Waddle, Sharen Markham, Billy Powell, Roberta Ketter, Roger Henneman, Robert Stark.

Second Row -- Robert Schalmo, Linda Goode, Georgia Blank, Mary Ann Biblis, Kathleen Ketler, Gary Klein, Judy Laughlin, Ethel Williams, Virginia Long, Michael Shull, Charles Fellmeth, Nancy Neidert, Mrs. Knight

First Row -- Mrs. Hanks, Joyce Rice, Barry Bobb, Charles Schwendiman, Kathy Jackson, David Nicholas, Sandra Peck, Claudia Kistner, Raymond Haggerty, Wesley Wells, Carol Sisler, Johnny Hessedence, Roger Tesch, Jeannie Garrett, Edith Martin.



#### MORNING KINDERGARTEN

Second Row -- Brenda Calvin, David Wheeler, Jenne Durinsky, Sheila Thorn, Carolyn Orman, Pamela Oser, Dene Helwig, Harold Wheeler, Charles Wagner, Ronald Oser, Jerry Simpkins, Janet Schalmo, Nancy Case, Allen Yoho.

First Row -- Mrs. Glenna Hahn, Velma Norman, Charlene Weller, Dale Russell, Judy Edwards, Barbara Williams, Robert Nettle, Frank Lockhart, Bill Swigart, Lee Dennis, Gary Richards, Mike Demharter, David Stauffer, Dayton Hopper, Paulette Rhoades.





#### AFTERNOON KINDERGARTEN

Second Row -- Mrs. Glenna Hahn, Tommy Ikins, Ted Slusser, Linda Boak, Susan Koons, Judy McFarland, Bill Fellmeth, Mark Angst, Becky Lerch, Paula Ellis, Paul Racin, Gregory Davis, Kevin Schroeder.

First Row -- Dorothy Craig, David Cundiff, Robert Blowers, Billie Dilworth, Gary Ferryman, Herbert Nicholson, Mark Stephan, Johnny Markus, Cynthia Piper, Larry Stoll, Gregory Spencer, Candis Angst.





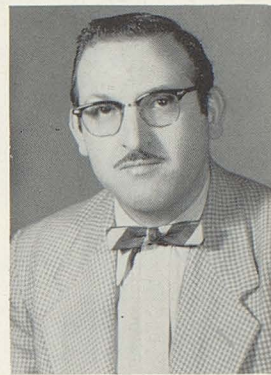
# Clinton Grade School



MR. DOBBS



MRS. RUCKMAN  
Vocal Music



MR. LIJOI



MR. CHENEVEY



MR. STINSON  
PRINCIPAL



MRS. HANEY



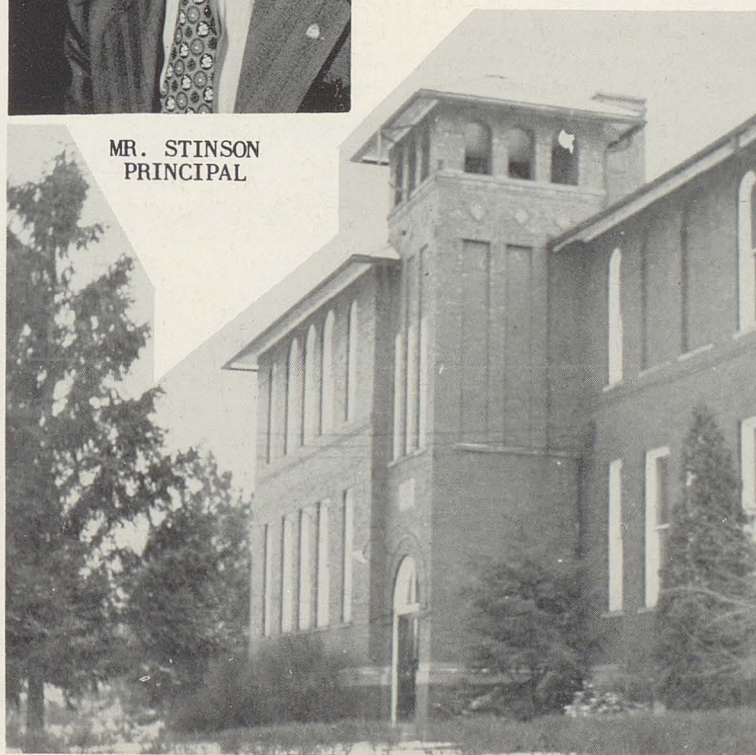
MRS. KNAPP



MRS. MORGAN



MRS. CAMERON



MRS. McINTOSH





#### EIGHTH GRADE

Fourth Row -- Eugene Witte, Ardell Rice, Steven Ogg, Harold Stults, Jimmy Rhodes, Russell Darnell Richard Smith, Donald Lane, Jerry Bodner, Dennis Mobley, Donald Ries.

Third Row -- Susan Kemp, Betty Carpenter, Beverly Korom, Joyce Rhodes, Linda Esselburn, Larry Jones, Juaneua Stahl, Nancy Gegner, Don Wright, Carol Knight, Gerald Hood.

Second Row -- Mr. C. W. Dobbs, Martha Mantooth, Rilla Minks, Virginia Miller, Lucile O'Connor, Mary Ulmer, Wanda Rice, Deanna Knapp, Carol Daiger, Patty Hartsock, James Holm, Lyla Holland.

First Row -- Danny Carpenter, Earnie Moore, James Sich, Kenneth Schilling, Ladd McIntosh, Clifford Connolly, Bernard Witte, Lyle Holland, Nan Ensminger, Deloris Smith, Carol Strosaker, Gail Tripplett.



#### SEVENTH GRADE

Third Row -- Stephen Ruip, Donna Miller, George Lee Garren, Patricia Wilhelm, Burton McCumber, James Kunkle, Mary Mantooth, Grace Rice, Sandra Duma.

Second Row -- Mr. Lijoi, Marvin Cundiff, Patricia Lane, Gary Ries, Sanford Middour, Ralph Starcher, Gregory Reynolds, Linda Nettle, Margaret Stinson.

First Row -- Barbara Mercer, Charlotte Connolly, William Daniel, Thomas Zabadah, Carol Zabadah, Bonita Gesaman, Denzil Digman, Martin Eckman, Sally Torson, Lawrence Groff.



#### SIXTH GRADE

Third Row -- Dibrell Ballard, Charles Snyder, Harold Lesher, Daniel Cromer, Susan Beaber, Janet Cameron, Patricia Conrad, Linda Hartsock, Barbara Yannayon.

Second Row -- Mr. Chenevey, Joe Moore, Jerry Wenger, Frederick Eckman, Nancy Louise Smith, Terry Lee Sense, Ralph Lindeman, John Morgan, Dean Jones.

First Row -- Shirley Stoll, Marie Ensminger, Charles Lesher, James Marich, James Gray, Keith Nixon, Marla Wilhelm, Edward Schwinger, David Earnsberger, Sammy Knapp.





#### FIFTH GRADE

Fourth Row -- Geraldine Gallagher, Ronnie McCumber, Walter Stults, Richard Goodrich, Donnie McCumber, Roderick Cromer, Sandra Lowry, John Ulmer, John Arter, Paul Harbaugh, John Schilling.

Third Row -- Mrs. Haney, Mark Walsh, Gary Lybarger, Leonard Starcher, Donald Lybarger, Dale Cundiff, Rita Artrip, Wanda Goodrich, Patricia Jolly, Patricia Hardman, Gayle Brasemla, Regina Allhouse, Dallas Rice.

Second Row -- Paul O'Connor, Lynn Tilley, Judy Hartsock, Thomas Holland, James Gossard, Carol Sense, Brenda Tripplet, David Ballard, William Sarver, Ada Ballard, Kenneth Gumbarevec.

First Row -- Ruth Strosaker, Terry Donnewirth, James Smith, Locklan McIntosh, Eugene Echman, Phillip Mantooth, Arnold Garren, Patricia Groff, Linda Lane, Patricia Randolph, Donald Koprivec.



#### FOURTH GRADE

Third Row -- Mrs. Knapp, Judith Arter, Sharon Mosley, Larry Hachensmith, Danny Wright, Judith Stultz, Larry Yannayan, Marlene Conrad, Blanchmarie Davis.

Second Row -- Robert Shultz, Dorteia Middour, John Sherrill, Anne Ruip, Oscar Smith, Michael Bodnar, Richard France, Tonya Duma.

First Row -- Lana McGregor, Dennis Pavelka, Sandra Sick, Robert Franks, Dennis Reynolds, Jean Walsh, John Badida, Harlan Robinson, Judy Dignan.



#### THIRD GRADE

Third Row -- Richard Holm, Martha Robinson, Michael Ruip, Alan Strosaker, Diane Ludwig, Catherine Esler, Judith Racin, Connie Smith, Elizabeth Schilling.

Second Row -- Mrs. Morgan, Barry Mantooth, Evelyn Gumbarevic, June Starcher, Sharon Carpenter, Barbara Zabadah, Karen Nixon, Dana Artrip, Carl Bender, Cynthia Ross.

First Row -- James Reece, Richard Leshar, Ruth Nettle, John Thomas, Richard Grimmet, Kay Kunkle, Robert Patris, Ronald Romich, James Hawley.





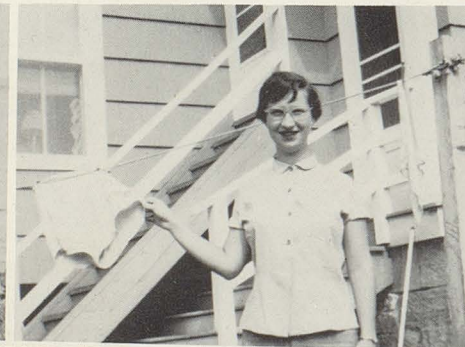
#### SECOND GRADE

Fourth Row -- Betty Turner, Roy Mosley, Roger Darnell, Thomas Cromer, Jerry Workman, Loyal Lindeman, Stanley Strickland, Hubert Wright, James Racin.  
 Third Row -- Mrs. Cameron, John Holland, Larry Nettle, Charles Knopf, Judith Ludwig, Richard Esler, Ray Yost, Thomas Swiger, James Stoll, Loretta Rice.  
 Second Row -- Gary Goodrich, David Moore, Lyle Randolph, Duane Yannayon, Sandra Craig, Robert Bonawit, James Torson, Gary Nettle.  
 First Row -- Kenneth Largent, Roger Badida, Susan Church, Elaine Duma, Ruthellen Davis, Barbara Earnsberger, Barbara Reeder, Margaret Zabadah, David Mercer.



#### FIRST GRADE

Fourth Row -- Carl Boglen, Ernest Bender, Dennis Ross, Michael France, Edward Turner, Allan Pratt, Robert Harbaugh, Peggy Vanleer, Emma Strickland, Thomas Racin.  
 Third Row -- Kathy Beech, Ronald Shriber, Robert Richardson, David Robinson, Marlene Shultz, Shirley Yannayon, Susan Garren, Richard Harbaugh, Diana Hardman.  
 Second Row -- Mrs. McIntosh, Janice Starcher, John Daiger, John Earnsberger, James Rose, Mitchell Rice, Connie Randolph, William Moore, Eugene Yannayon, Robert Leshner.  
 First Row -- Joyce Adkins, Frank Davis, Jacqueline Arter, Fred Harbaugh, Donna Mercer, Milton Sich, Judy Rice, Cheryl Gossard, Norma Grubb.







ST. PHILIP  
and  
JAMES SCHOOL

FACULTY

SISTER MARY ST. JOAN  
SISTER MARY CYNTHIA  
SISTER MARY EWALDA



THE REVEREND FATHER  
JOHN L. MAURER  
PRINCIPAL





#### SIXTH, SEVENTH, AND EIGHTH GRADES

Third Row -- Barbara Kendle, Anne Weinrich, Joyce Talalas, Linda Youngblood, Mary Margaret Garman, Patricia McFarland, Annette Schalmo, Roseanne Oser, Martha Blank, Mary Ann Remark, Doris Boak.

Second Row -- Louise Seifert, William Williams, Gary Stephan, Terry Willmott, Robert McFarland, Kathleen Garman, Raymond Yurick, Gary Stephan, Michael Gozdan, Judy Burger.

First Row -- Robert Rohr, Allan Yingling, James Chenevey, Mary Lou Stitz, Joyce Yingling, Barbara Burger, Karl Youngblood, George Gabor, Kenneth Aman, James Koenig.



#### THIRD, FOURTH, AND FIFTH GRADES

Third Row -- William Lerch, Eileen Simpkins, Joyce Shondel, Timothy Ilg, Mary Alice Young, Jane Culp, James Gill, Carol Tinsler, Gary Etling, Rosemary Gill, James Remark, Mary Margaret Rohr, Donna Ferdinand, Nancy Remark, Daniel Youngblood.

Second Row -- Carol Paul, Karen Etling, Nancy Workman, Arthur Seifert, Vincent Yurick, Mary Lois Bloomfield, Verla Yingling, Minta Lerch, Thomas Remark, Barbara Gill, Mary Boland, Norman Schroeder, Patricia Ott, Mary Jane Fierstos, Joyce Stephan.

First Row -- Donna Boak, Thomas Richardson, Joanne Williams, Mary Ann Seifert, Ramon Yingling, Carol Weber, Eugene Gabor, Dennis Stephan, Floyd Freed, Ronald Steiner, Galen Gozdan, Paul Seifert, John Youngblood, Jacqueline Preece, Richard Chenevey, Barbara Wagner.



#### FIRST AND SECOND GRADES

Third Row -- Robert Remark, Kenneth Burns, Donald Lerch, Dennis Yingling, Robin Gozdan, John Sonnahltter, Peggy Kline, Sharon Ehlinger, Pamela Remark, Linda Oser, Dorothy Boland, Kathleen Appleman.

Second Row -- Larry Gill, Donald Koenig, William Bickett, Terry Morrow, Robert Koenig, David Juersvich, Nina Garman, Karen Burns, Joyce Taylor, Judy Culp, Shirley Youngblood, Linda Russ.

First Row -- Steven Testa, Ralph Chenevey, John Rohr, David Faiello, William Paul, William Stephan, Margaret Rohr, Evelyn Workman, Christine Ilg, Carolyn Cooper, Annette Seifert, Barbara Etling.





Advertising





## What's your choice?

**E**VER think about working in some far away place? Like logging in Oregon? Lobstering in Maine? Farming in Iowa? Go ahead if you want to. Freedom to work in any locality is one of your American rights. And it's a right that people in some other countries wish they had.

Millions of people behind the Iron Curtain can't work where they choose. Communist bosses make them slaves where manpower is needed most. And if they do try to move someplace else, they're very likely to end up in a box car bound for Siberia.

What's *your* choice? Freedom, of course. But there's more to preserving our rights than just thinking about them. Communists over here would give us Iron Curtain country working standards if they could. They've done it every place else they've taken over.

If we want to keep our rights, like the right to work in any locality, we've got to work for them. One way is to speak up when we hear someone talking down our freedom. After all, a few extra words from each of us could guarantee our freedom forever.

# TIMKEN

The Timken Roller Bearing Company  
*"The right to work shall not be abridged nor made impotent"*

### DO YOU KNOW YOUR RIGHTS?

As Americans, we have the greatest freedom and the highest standard of living in the world. Help keep it that way by knowing your rights and guarding them well. Some of them are:

- Freedom of worship*
- Right to secret ballot*
- \*Right to know how your union spends your dues*
- Freedom of speech*
- Freedom of the press*
- Right to criticize officials*
- \*Right to know salaries of your union officers*
- Freedom from search without warrant*
- Right to petition government for redress of grievances*
- \*Right to know if your union officers are Communists*
- \*Right to know how your union is run*
- Right to speedy and public trial by jury*
- Right to help of a lawyer*
- \*Right to hear your employer's side of disagreements*
- Right not to appear as a witness against yourself*
- \*Right to refuse to permit the "check-off" of union dues*
- \*Right to go direct to your boss with a grievance*
- Right to be presumed innocent until proved guilty*
- Freedom to own property*
- \*Right to work despite union jurisdictional disputes*
- Freedom to work in any locality*
- \*Right to proper supervision of your union welfare funds*
- Freedom to start and manage a business*
- Freedom to make a profit*
- \*Right not to be fired by union leaders*
- \*\*Right to vote on company's best offer*

*\*These are rights you enjoy under the Taft-Hartley law.  
 \*\*This is a right enjoyed by members of United Steel Workers, C.I.O. only when the Taft-Hartley law is invoked.*

**THEY'RE YOUR RIGHTS,  
 TREAT THEM RIGHT!**



*Compliments of*

DAVIS STUDIO

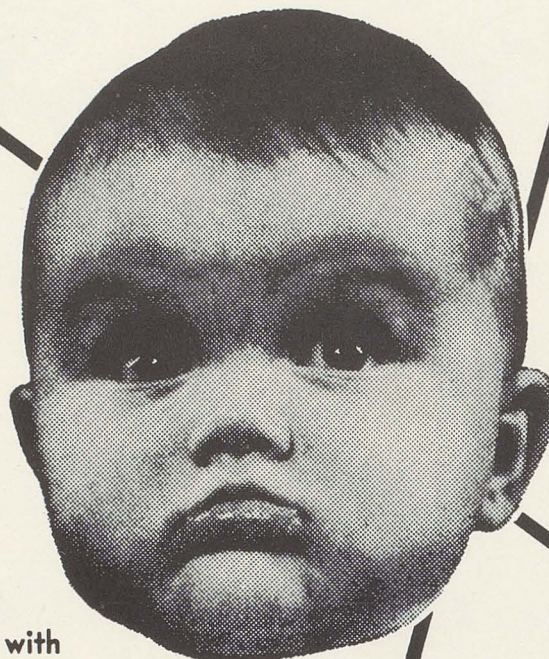




1456 WIN-FEB '55 Form 85

## INVESTMENT IN YOUR CHILD'S FUTURE...

When you shop in your hometown center,  
you invest in the security of your youngsters!  
Local merchants can't afford to let you down with  
inferior merchandise or service — they depend  
upon you for present and future patronage. Their  
success pays you with their interest in all things local!  
Better schools and progressive civic improvements are  
your merchants' stakes in this community, too. His future  
helps guarantee the future of you and your family . . .



1457 WIN-FEB '55 Form 85

## SHOP IN YOUR HOME COMMUNITY

CANAL FULTON SHOPPER

CANAL FULTON OHIO

PHONE UL 4-3936

ADVERTISING  
PRINTING  
OFFICE APPLIANCES

KENNETH MARKHAM, PUBLISHER



CONGRATULATIONS  
to the Class  
of 1955

## BLOOMFIELD CHEVROLET

SOUTH CANAL STREET

*Canal Fulton's Most Modern Auto Service*



A—Always  
B—Buy  
C—Chevrolet

**JOE COX**

REPRESENTING HERFF JONES CO.

CLASS RINGS AND INVITATIONS

CLUB PINS      TROPHIES      MEDALS

CUYAHOGA FALLS, OHIO

BOX 247

SW 4-4574



Onesto *and* St. Francis

HOTELS

CANTON

FRANCIS A. ONESTO

---

The First National Bank  
In Massillon

**Massillon's Only National Bank**

**THE BANK OF FRIENDLY SERVICE**



**BEST — WISHES**

**TO THE CLASS OF 1955**

**YOUR WESTINGHOUSE STORE  
YOUR SPORTING GOODS STORE  
YOUR ZANDER'S AND RUSS' HARDWARE**

**STARK COUNTY'S  
ORIGINAL DRIVE-IN HARDWARE**

**CANAL FULTON**

**PHONE UL 4-2397**

**Compliments of**

**C. R. KURTZ**

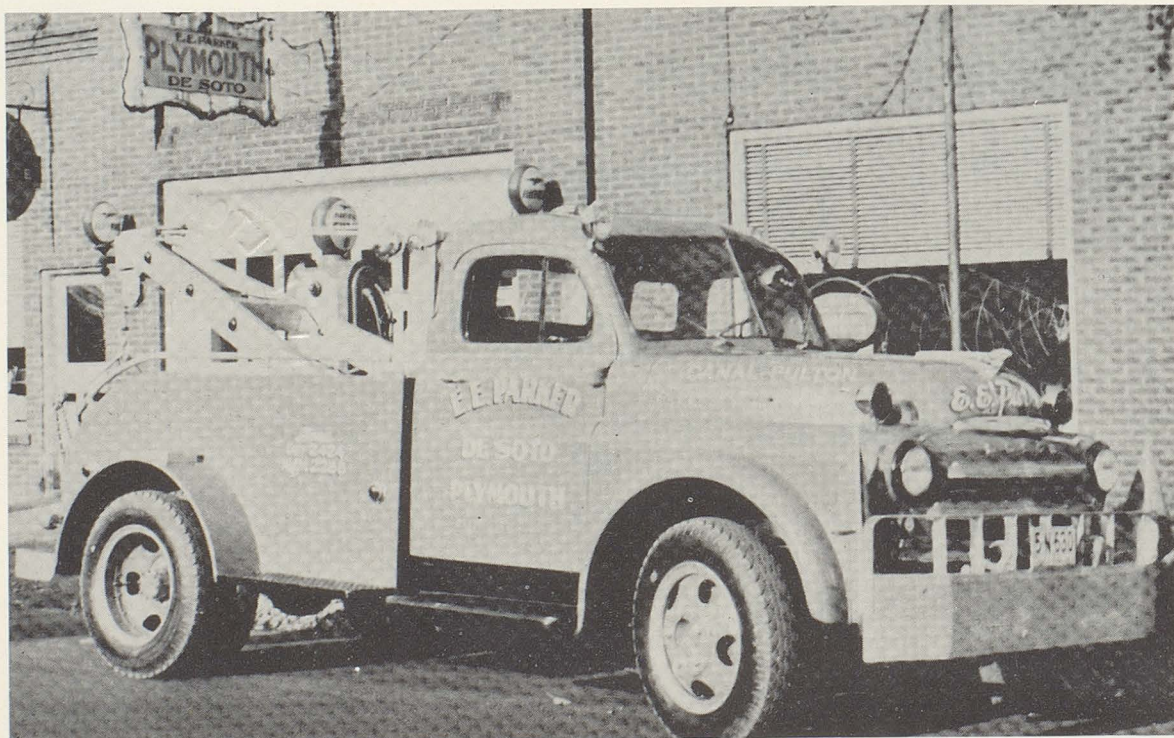
**AND  
ASSOCIATES**

15376

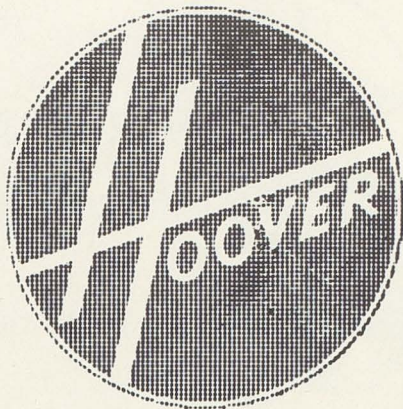


**Congratulations to the  
Class of  
1955  
THE ELMER R. STAUDT AGENCY**

**E. E. PARKER MOTOR CO.**







You'll be  
happier  
with a

**HOOVER**

*Compliments*

*of*

**Canal Castings Company**

**ALUMINUM AND BRASS CASTINGS**

**Canal Fulton, Ohio**





# Freedom s Forum

Your Newspaper

**THE EVENING INDEPENDENT**



**H. E. SIMON CO.**

**JEWELRY and GIFTS**

507 West Tusc. Avenue

**BARBERTON, OHIO**

SH 5-6410

**Headquarters For**



*The Gift That Starts The Home*

**Ohio Furniture Co.**

Tuscarawas at 2nd . . .

Phone PLaza 7757

*Barberton's Largest*

KOZAR S DRIVE--IN

OPEN 24 HOURS

**Curb and Table Service**

CHOPS SANDWICHES STEAKS

*Located on Route 21  
3 1/2 Miles North of Canal Fulton*

**The Clinton  
Savings Bank Co.**

COME IN

AND MAKE USE OF OUR SERVICE

**Clinton, Ohio  
Summit County**



## **KUNKLE & KLINE Inc.**

TWO STORES TO SERVE YOU

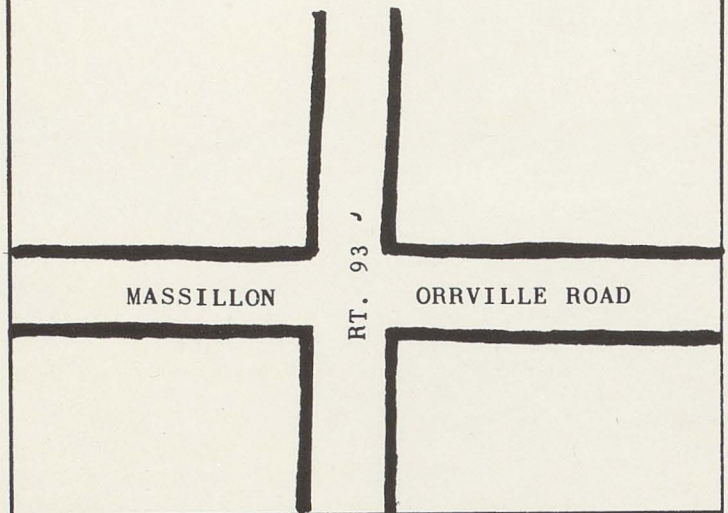
Clinton TU 2-3080

Manchester TU 2-3717

GEESY'S

GULF SERVICE

AND  
GROCERIES



*Best Wishes to the*

**Class of**

**"55"**

## **STARK GLASS, INC.**

**General Glazing Contractors**

409 Erie Street, North

MASSILLON, OHIO

NELSON INDUSTRIAL SUPPLY CO.

MASSILLON, OHIO

PAPER PRODUCTS & JANITOR SUPPLIES



*Compliments of*  
**MASSILLON INDEPENDENT  
RETAIL JEWELERS**

GLENN P. HECKERT  
SUTTER'S JEWELER  
J. L. FROMHOLTZ  
C. J. DUNCAN  
PITCOCK and WAGNER, Inc.

## **DeLuxe Dry Cleaning**

**Quality**  
*Is an important part of our*  
**Cleaning Service**

PLANT--55      FOREST AVE. S.E.

STORE--42      NORTH ERIE ST.

PHONE      3-8404

MASSILLON, OHIO

## **HARDWARE**

PAINTS                  GARDEN SEED

SPORTING GOODS

JOHNSON MOTORS      LAWN FERTILIZER

HOME OWNED  
MASSILLON HARDWARE CO.

39 LINCOLN WAY WEST

*Compliments*  
*of*



**THE  
COMMERCIAL PHOTOLITH  
CO.**

137 First Street, N. E.  
Massillon, Ohio



## THE CERES SUPPLY CO., INC

ROBERT R. HESS & SON

Manufacturers of  
**CERES FEEDS**

For Livestock and Poultry

**" SPECIALLY FORMULATED FEEDS  
OF OUTSTANDING QUALITY "**

Hales & Hunter "Red Comb" and "Pioneer Feeds"

Friskies and Rydes Dog Foods. Feed Ingredients

Scotts Lawn Seeds & Fertilizer: Stadler's Fertilizer

American and Red Top Fence for Farm and Home

Bulk Feed Delivery Grain Drying

Free Consulting Service

PHONE 4121

**Best Wishes to**

**Graduating Class of**

**1955**

**THE IRWIN STEEL CO.**

*Compliments of*

**THE OBERLIN DAIRY**

**Pasteurized Dairy Products**

**"QUALITY SERVES YOU BEST"**

**Phone Massillon 4666**

**308 20th St. N. W.**

**BEST WISHES**

**to the**

**CLASS**

**of**

**1955**



**THE  
STERN AND MANN  
COMPANY**

**Canton, Ohio**



**Congratulations**

**to**

**CLASS OF 1955**

— • —

**FINEFROCK BROS.**

UL 4-2361

OPEN TILL 8:30 P.M.

TUESDAY AND THURSDAY

**SCHALMO IMPLEMENT**

**McCormick - Deering  
Tractors and Implements**



**Refrigeration**

**New Idea Spreaders**

•

**Repairs  
Fence and Farm Hardware**

**W. E. GILCHER  
LUMBER COMPANY**

—

**Mule Hide Roofing**

—

**Lumber • Sash • Doors  
Millwork**

**West of B & O Station**

**PHONE**

**RES. UL 4-2256**

**BUS. UL 4-2337**

*Compliments of*

**GILCHER LUMBER INC.**

•

**BOB SWIGART**

*Manager*

**Phone UL 4-2222**



**Compliments  
of**

ED HARRIMAN

**Compliments  
of**

DENISON & DIEHL

GROCERS

*Compliments of*

THE CHARM SHOPPE

EAST HIGH ST. CANAL FULTON

PHONE UL 4-2179

BEST WISHES TO THE CLASS OF "55"

SUPERIOR SAND and GRAVEL

ROUTE 21

MASSILLON, OHIO

TEMPLE 3-6191

FULTON CLEANERS

23 YRS. SERVING FULTON

WE DO OUR CLEANING ON THE PREMISES

FREE PICKUP and DELIVERY

PHONE UL 4-2278

**Compliments  
of**

**Florian P. Cuthbert, M.D.**



DANNEMILLER ORCHARDS

QUALITY APPLES AND PEACHES

CLINTON, OHIO PHONE TU 2-3020

BEAUTY NOOK

BEAUTY FOR YOU  
MABEL WOKATY, PROP.

North Lawrence

TEMPLE 2-6208

IF IT'S PRINTING YOU NEED CALL

ECONOMY PRINTING CO.

TU 2-3012

WE SHALL BE MOST PLEASED TO FILL YOUR  
PRINTING REQUIREMENTS

1780 WEST CENTER RD. CLINTON, OHIO

*Compliments of*

SWEIGERT'S CONFECTIONERY

North Lawrence, Ohio

**Compliments of a Friend**

**T. Q. Lawrence**

**Complete Food Market  
on the square**

North Lawrence, Ohio

*Compliments of*

BROWN'S I. G. A. MARKET

PHONE MASSILLON 9327

**NORTH LAWRENCE**

*Compliments of*

**Lawrence's Hardware**

**Roofing — Spouting**

Phone Mass. 9586

**NORTH LAWRENCE**

**SINGER'S SERVICE STATION**

**Mobilgas Products**

**TIRES — BATTERIES — GENERAL REPAIRING**

North Lawrence

PHONE MASSILLON 9665

ELMER SCHROEDER

GULF DISTRIBUTOR



## Tom's Toggery

T. J. Stebick

**Men's and Boys' Outfits**

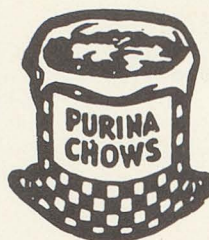
Home of Hart, Schaffner, & Marx  
*Good Clothes*

STETSON AND MALLORY HATS

DOWNTOWN

BARBERTON

GRABER MILLS, INC.



CLINTON, OHIO

## A. A. Weller

*The Home of Good Shoes*

143 - 2nd Street

BARBERTON, OHIO

SH 5-2225

## Smith Super Service

GAS OIL TIRES BATTERIES

GREASING GENERAL REPAIRING

CLINTON, OHIO

TU 2-3155

## JOHN P. SMITH CO.

ELECTRIC SHOP

REFRIGERATORS -- RANGES -- RADIOS

WASHERS -- IRONERS

WATER-HEATERS and APPLIANCES

495 WEST TUSC. AVE.

BARBERTON, OHIO

## CONNER'S SERVICE STATION

COMPLETE AUTO SERVICE

24 HOUR TOWING SERVICE



*Compliments of*

**SHERWOOD SPORT CENTER**

BE SURE TO STOP WHEN  
YOU GO THRU CLINTON

## Kemble's Kustard

SANDWICHES — SUNDAES — MILK SHAKES

*Candy — Ice Cream in Bulk*

**Clinton, Ohio**

*Compliments of*

**THE FRANK CO.**

WEST TUSC. AT 2nd STREET

BARBERTON, OHIO

HOWARD'S FOOD MARKET

**Home Dressed Meats**

**Frozen Foods**

**Fresh Produce**

Free Delivery

TU 2-4438



**The Sanitary Laundry  
and Dry Cleaning  
Massillon, Ohio**

PLANT and MAIN OFFICE    CASH AND CARRY DRIVE-IN  
421 1st STREET N.E.                  620 LINCOLN WAY EAST

*Compliments of*  
**Joe Goldenfield**  
QUALITY MENSWEAR  
169 Lincoln Way W.  
MASSILLON, OHIO

**SEGEL'S**  
*Where You Will Find Lovely  
Things To Wear*  
28 Lincoln Way, E.  
MASSILLON, OHIO  
Phone 4829

**John D. Getz & Son**

**PLUMBING and HEATING**

Phones 3294 - 4804 - 2-6850

305 First Street, N. E.

MASSILLON, OHIO

*Compliments*  
**MORTONS**  
Stationery — Gifts — Luggage  
Greeting Cards — School Supplies

112 Lincoln Way West      Massillon, Ohio

BEST WISHES & SUCCESS

THE SPECIALTY SHOP

FEATURING

GREETING CARDS, GIFTS, JEWELRY

**KRAFT & POTH**

PLUMBING AND GAS FITTING  
STEAM AND HOT WATER HEATING, JOBBING  
PHONE 5253 - 1320 FIRST STREET, N. E. - PHONE 4342  
Massillon, Ohio

*Congratulations to the*  
CLASS OF "55"

**STANFORD  
ELECTRIC CO.**

MASSILLON, OHIO

**Rex Typewriter Co.**

Adding Machine and Typewriter  
Sales and Service

332 Erie St. S.  
MASSILLON, OHIO

EATON MANUFACTURING COMPANY

RELIANCE DIVISION MASSILLON, OHIO



*Compliments of*  
**Morrison Music Service**  
Band Instruments  
Phone 7560 — 220 Lincoln Way E.

## **LONG'S MEN'S SHOP**

DIAL 2-2211

50 ERIE ST., N.

JOHN CRONE

PAUL CRONE

TAILORING & HABERDASHERY

*Compliments of*  
**STONE BROS. Clothes**  
Large Selection of Suits for the Graduates  
Sport Slacks — Jackets  
Coats — Furnishings  
104 Lincoln Way W. Massillon, O.

SEARS, ROEBUCK AND CO.

155 LINCOLN WAY, MASSILLON

PHONE 4184

SHOP AT SEARS AND SAVE!

## **W. M. KYSER Sales Company**

P. O. Box 366  
WARREN, OHIO

COMPLIMENTS

OF

BILLHERM SCENIC STUDIOS INC.

CAIRO, OHIO

## **Dumont Athletic Goods**

134 Second Street S. E.  
Canton, Ohio

**Complete Line of Athletic Goods**

## **STERLING BAKERY**

*Bakers of*

MISS 19 HEALTH BREAD

*and*

PETER WHEAT

*Compliments of*  
  
THE  
  
FULTON FEED AND SUPPLY CO.

## **ARMAN'S POTATO CHIPS**

MANUFACTURERS and DISTRIBUTORS

"KITCHEN COOKED"

PHONE UL 4-3992 CANAL FULTON, OHIO



*Compliments of*

**LEY BROS. TURKEY FARM**  
**OHIO TENDER GROWN**  
**TURKEY'S**

**Phone 2712**

**Canal Fulton, Ohio**

*Compliments of*

**BRADSHAW'S SERVICE STATION**

**INTERSECT OF ROUTE 236 and ROUTE 21**

**3 MILES NORTH OF MASSILLON**

**EARL'S BARBER SHOP**

**PHONE UL 4-2212**

**OWNER: EARL ZIMMERMAN**

**Canal Fulton, Ohio**

**Compliments  
of**

**H. J. ROCKWELL FITTING CO.**

**BEST WISHES**

**to the**

**CLASS OF "55"**

**MOORE'S RESTUARANT**

*Compliments of*

**ART Mc GREW**

**YOUR FRIENDLY  
REXALL DRUGGIST**

*Compliments of*

**RALPH HARDGROVE**

**FEED & BUILDING SUPPLIES**

**Canal Fulton, Ohio**

**COMPLIMENTS**

**OF**

**PAUL SWIGART**

*Compliments of*

**ART'S BARBER SHOP**

**ART LOWRY OWNER**

**Canal Fulton, Ohio**

**KASER COAL & SUPPLY**

**BUILDING MATERIALS---PREMIUM COAL**

**VERNON PIPER, OWNER**

**Phone UL 4-2306**

**CANAL FULTON**



The Exchange Bank Co.  
DEPOSITS INSURED

*Compliments of*  
**Kendall's Barber Shop**

George Kendall, Owner  
CANAL FULTON, OHIO

*Compliments of*  
ROY HOFSTETER

DEALER IN RAW FURS  
  
Canal Fulton, Ohio

Compliments  
of

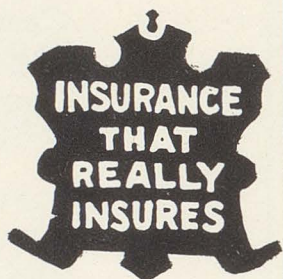
CUTHBERT JEWELRY

COMPLIMENTS OF

VINCE STEPHAN

REPRESENTING

FARM BUREAU INSURANCE



*Compliments of*



JOHNSON'S FORD GARAGE

Phone ULster 4-2333

*Compliments of*

DR. NORMAN J. EHLINGER

124 CANAL STREET

Canal Fulton, Ohio

**Compliments**

**of**

ROBERT D. FELLMETH

FOR "DEPENDABLE INSURANCE"

PHONE UL 4-2481

FULTON FLOWER SHOP

FLOWERS FOR ALL OCCASIONS

PHONE: UL 4-2343

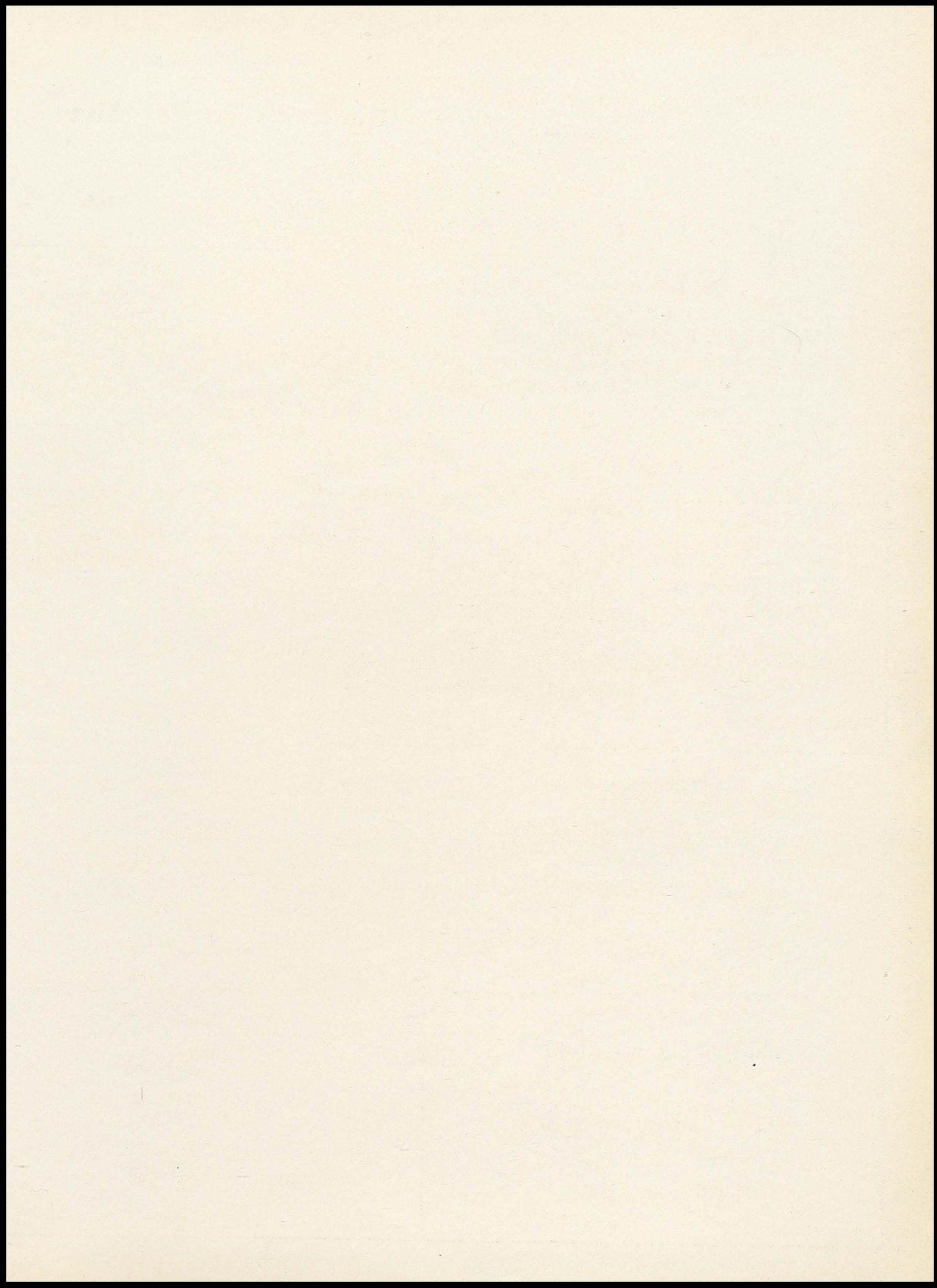
BEST WISHES

TO

THE CLASS OF "55"

McMILLEN HARDWARE





























## INTER-COLLEGIATE PRESS

Publishers · Cover Manufacturers · Book Binders

FACTORY · HOME OFFICE  
Kansas City



