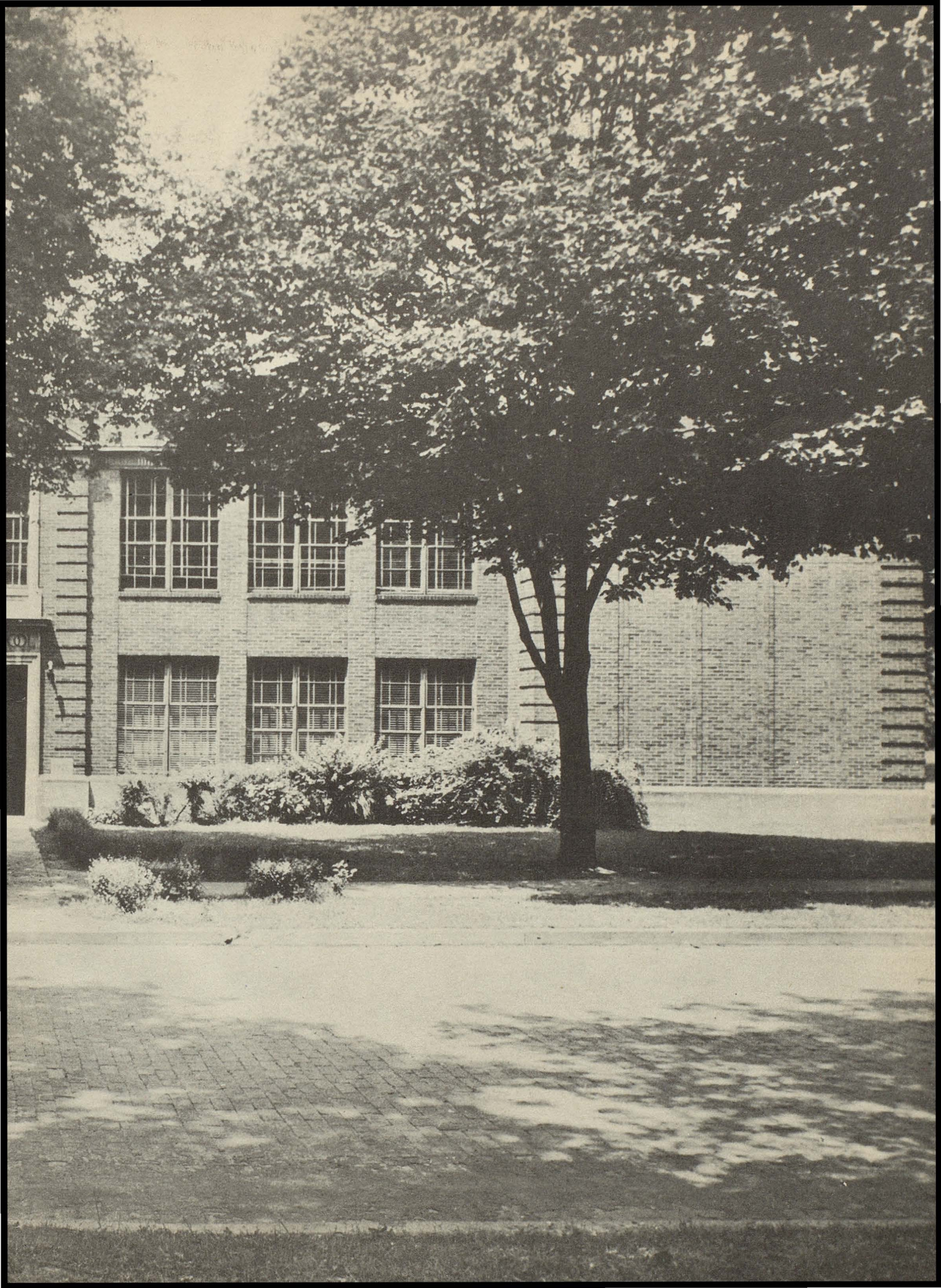


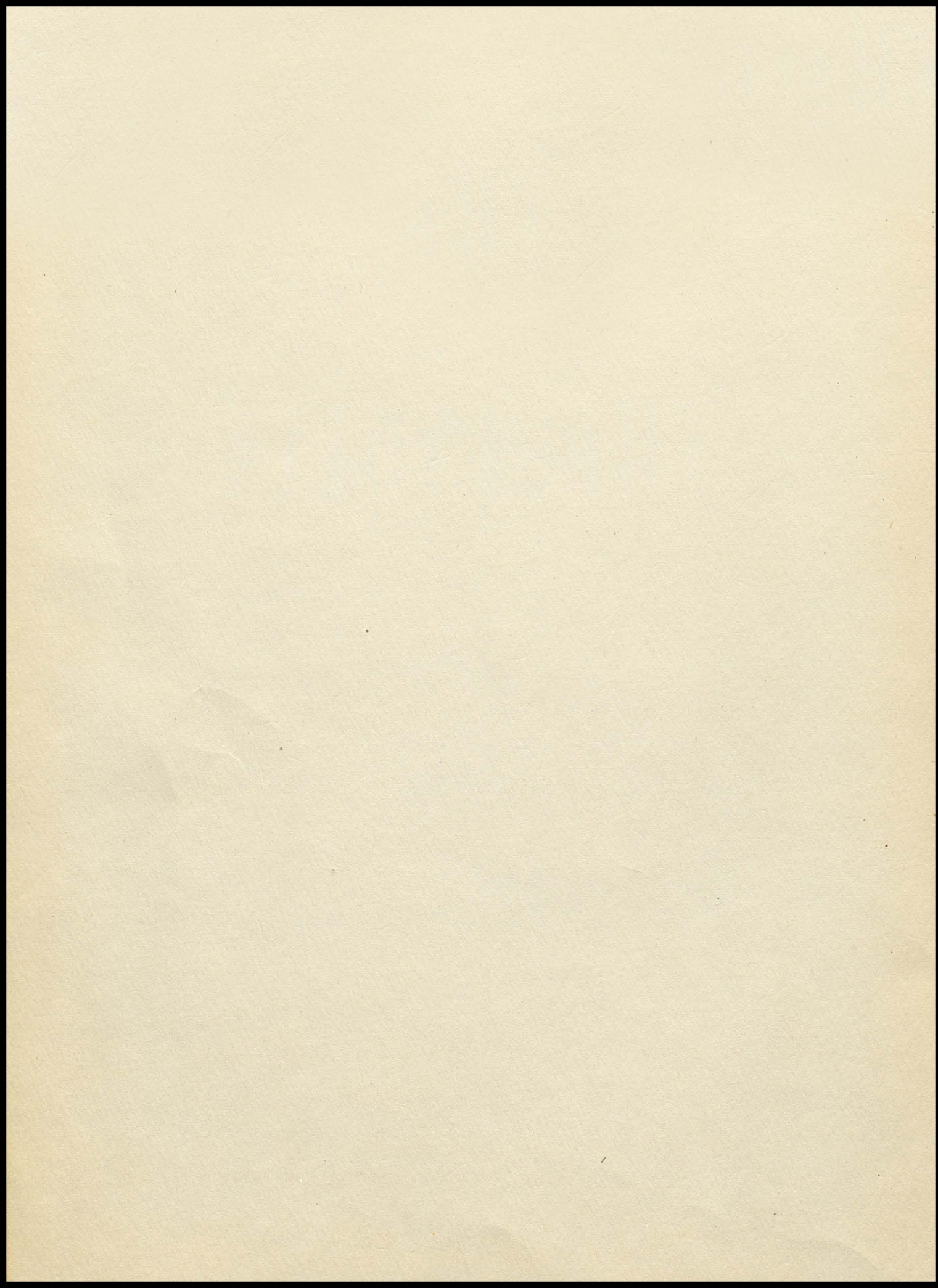


1
9
4
8

 Multonian





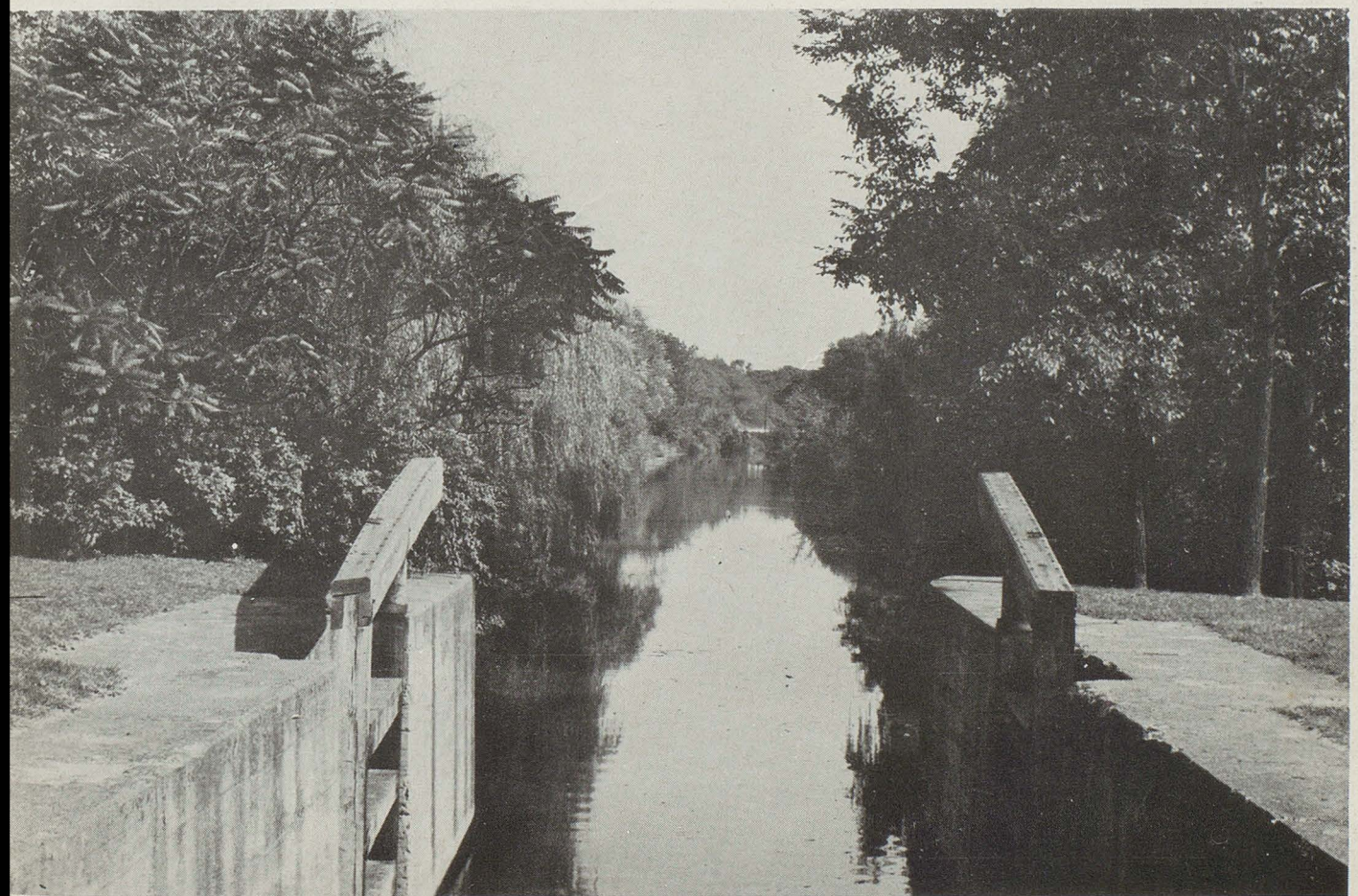


The
CLASS OF 1948

Presents

THE

FULTONIAN



Honor Lies At Labor's Gate



CANAL FULTON HIGH SCHOOL

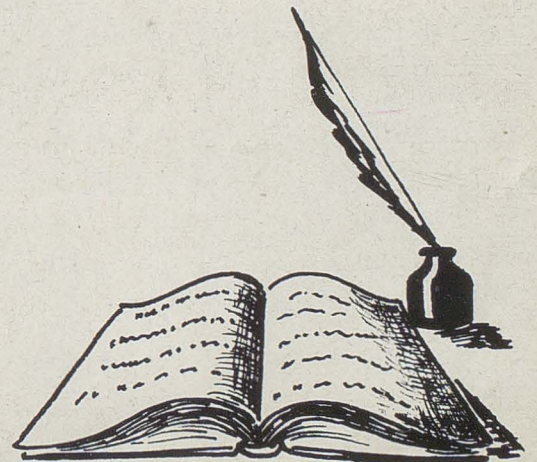


WILLIAM H. KNIGHT,
Superintendent

ADMINISTRATION



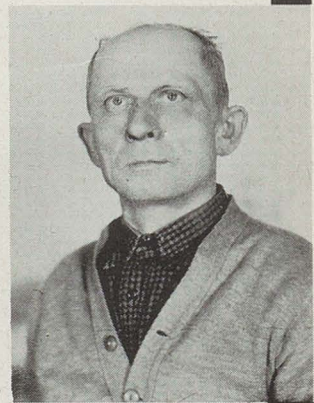
CECELIA PAULUS
Secretary



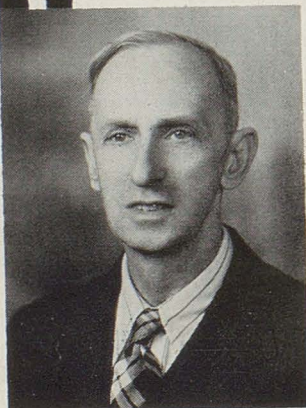


BOARD OF EDUCATION

MR. TOTH
Grade School Custodian



MR. HAGGERTY
High School Custodian





MARY E. FLETCHER



ANN E. GIBBONS

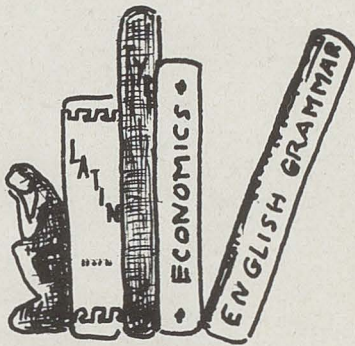


HELEN I. SIMPSON

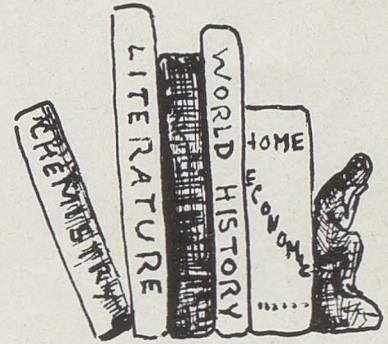
Ann E. Gibbons

Helen I. Simpson

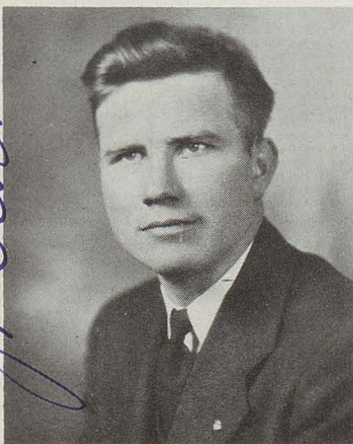
HIGH SCHOOL FACULTY



EMIL W. PUFFENBERGER



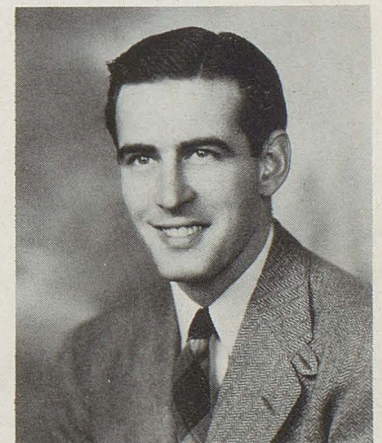
J. W. Crock



JOSEPH W. CROCK



SARAH F. LAWRENCE



RICHARD C. WEIGLE

Feaver



Carl W.



Don a



Leave



Michy



Party



Lyle

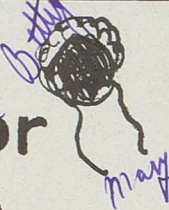


Cril



Flora

Senior
Baby
Pictures



Yara

Baby



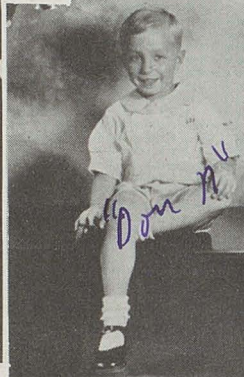
Pictures

Hazel

Jack

Don L. N. S. C. D. A.

Col



Don A.



Wanda

Mable



Shook



ml



Stanley



Carl

Bob



Lyle

Mary R.

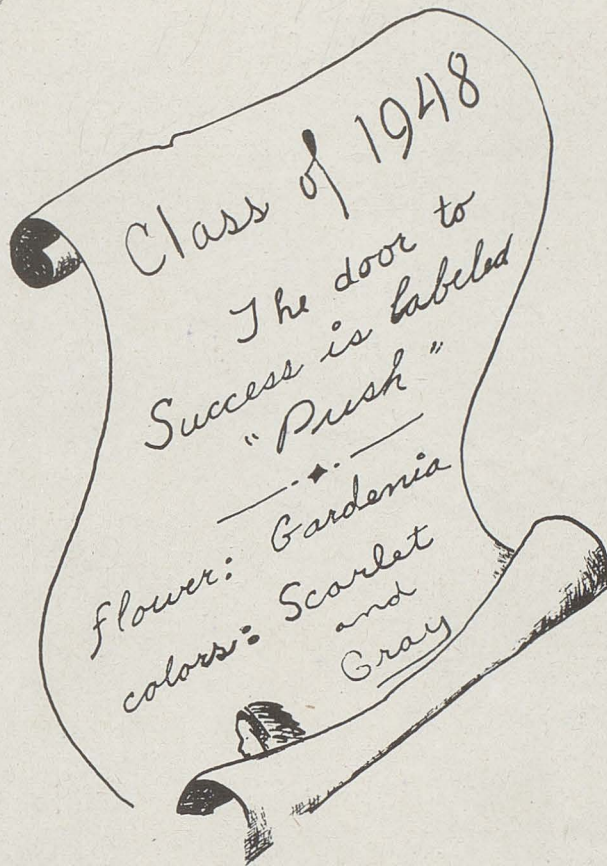
Ruth

Judy

Mary

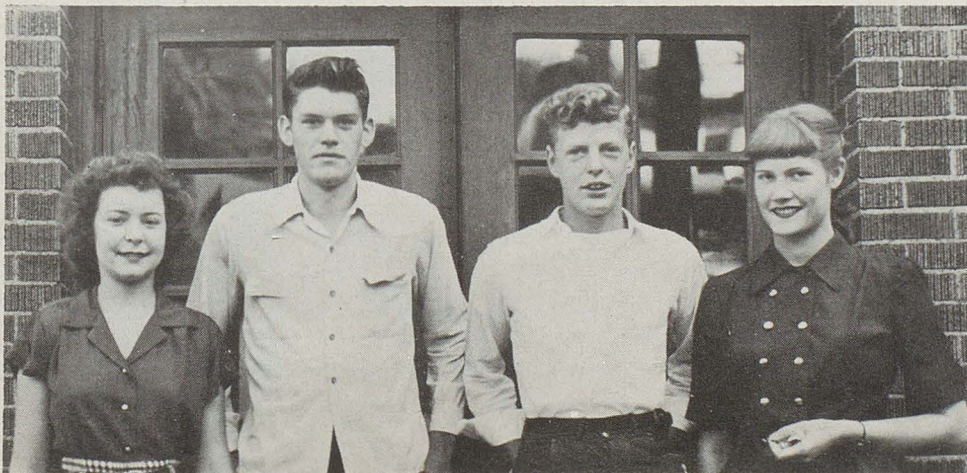


MR. PUFFENBERGER
Class Sponsor



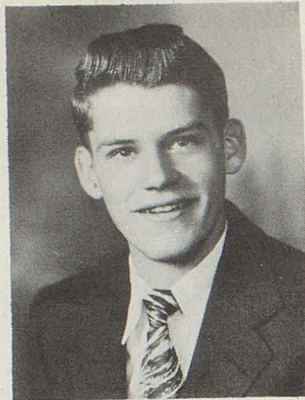
SENIOR OFFICERS

- Carol Simmons
- Donald Albright
- Merle Gordon
- Ruth Moore



1948

SENIORS



DONALD ALBRIGHT
"Emmett"
The only way to have a friend is to be one.

- Football 2, 3, 4
- Basketball 1, 2, 3, 4
- Class President 1, 2, 3, 4
- Hi-Y 2
- Projector Club 2, 3
- Band 1
- Annual Staff
- Junior Play
- Senior Play

*Good Luck
"Don"*



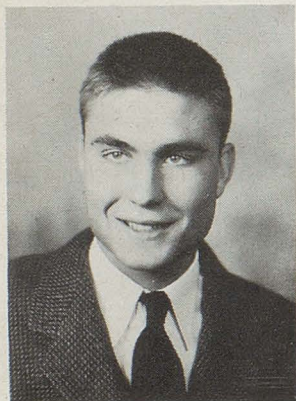
WANDA BOSER
"Tomi"
So quiet and shy;—well,
at least I used to be.

- Akron East 1, 2
- Glee Club 3, 4
- Commercial Club 3, 4
- Newspaper Staff
- Annual Staff
- Football Queen Attendant 4
- Scholarship 3
- Senior Play

*To Glamour Boy
Best Kisses
Lots of love
Rube*

JAMES BUTLER
"Butterball"
His laugh is so bright and breezy.

- Football 1, 2, 3, 4
- Band 1, 2, 3, 4
- Basketball 1, 2, 3, 4
- Orchestra 3, 4
- Student Council 3
- Annual Staff 4
- Junior Play
- Publicity Mgr., Band 2, 3
- Solo 2, 3, 4
- Ensemble 3, 4
- Hi-Y 2
- Projector Club 2, 3, 4
- Efficiency Mgr. 4
- Senior Play



DELBERT BURWELL
"Rube"
A lanky youth without a care.

- Football 1, 2, 3, 4
- Basketball 1, 2, 3, 4
- Band 1, 2, 3, 4
- Band President 4
- Band Efficiency Manager 2, 3
- Student Congress 3
- Junior Play
- Hi-Y 2
- Commercial Club 4
- Orchestra 2, 3
- Scholarship 1
- Solo and Ensemble 2, 3, 4
- Annual Staff
- Senior Play

EDNA LOHR
"Eno"
Good humor only teaches charm to last. Still makes new conquests and maintains the past.

- Y-Teens 1, 2, 3, 4
- Home Economics 1, 2, 3
- Commercial Club 3, 4
- Librarian 2
- Junior Play
- Annual Staff
- Newspaper Staff
- Y-Teens Service Chmn., 4

*Best Kisses
"Edna"*



FAYE DECKER
"Faysie"
A maiden, thoughtful and reserved in manner.

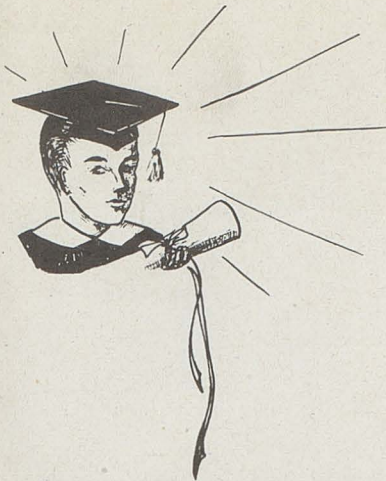
- Senior Play 4 (1947)
- Commercial Club 3
- Y-Teens 1, 2
- Home Economics 1, 2
- Annual Staff
- Newspaper Staff

MERLE GORDON
"Teaser"
An athlete you'd like to meet; when he's in action he can't be beat.

- Football 1, 2, 3, 4
- Basketball 1, 2, 3, 4
- Vice President 1, 3, 4
- Annual Staff 4
- Projector Club 2, 3, 4
- Newspaper Staff 4
- Hi-Y 2



*Good morning
to a girl
in 2nd year*



*Lots of Luck
Jack*

JACK GREENHOE
"Grundy"

He considers that everyone should be happy as long as he is alive.

- Football 1, 2, 3, 4
- Basketball 2, 3, 4
- Projector Club 2, 3, 4
- Annual Staff
- Newspaper Staff



ELIZABETH HARDGROVE
"Tweet"

Always laughing, always gay.

- Sacred Heart Academy 1
- Girl Reserve 2
- Band 2, 3, 4
- Commercial Club 3, 4
- Majorette 3, 4
- Football Queen 4
- Annual Staff
- Home Economics 2
- Newspaper Staff
- Senior Play

*Good Luck
"Tweet"*

ISABELL LOCKHART
"Issy"

Officious, innocent, sincere.

- Y-Teens 1, 2
- Newspaper Staff
- Annual Staff
- Commercial Club 3, 4
- Senior Play

*Good Luck
to Jim
"Issy"*



GEORGE LEE HANN
"Handy"

Give me a horse and a bale of hay and I will surely make my way.

- F. F. A. 2, 3, 4
- F. F. A. Vice President 4
- Football 2, 3
- Annual Staff
- Newspaper Staff
- Projector Club 4
- Commercial Club 4

*Best of
George
Lads of Luck
Ruth Moore*

GLENN LAUTZENHISER
"Lautzy"

It is easier to be wise for others than for ourselves.

- F. F. A. 3, 4
- Band 1, 2, 3, 4
- Orchestra 3, 4
- Football 1, 4
- Newspaper Staff
- Annual Staff

*Good Luck
Glenn
Lautzenhiser*



RUTH MOORE
"Timber"

Quiet, tall and dignified.

- Y-Teens 1, 2, 4
- Librarian 2
- Speech Contest
- Watertown, Mass. 3
- Glee Club 4
- Class Treasurer 4
- Annual Staff
- Newspaper Staff
- Scholarship 1, 2
- Commercial Club 4
- Glee Club Librarian 4
- Senior Play

BETTY OTT
"Betts"

Simple and sweet, loved by all she meets.

- Class Secretary 3
- Commercial Club 3, 4
- Annual Staff
- Newspaper Staff
- Scholarship 2, 3

*Good Luck
Betty Ott*





"Fake It Easy Jim"
Bob Shull

ROBERT SHULL
 "Bob"

God bless the girls, I love them all.

- Football 1, 2, 3, 4
- Basketball 1, 2, 3, 4
- Projector Club 2, 3
- Annual Staff 4
- Newspaper Staff

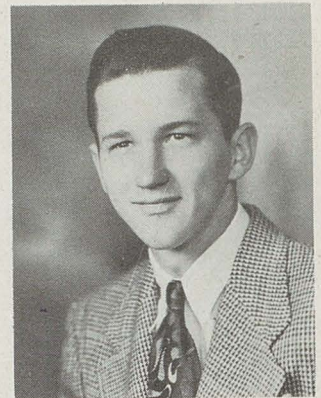


MABEL SHOOK
 "Pinky"

Blue eyes, blond hair, no worries, not a care.

- Band 1, 2, 3, 4
- Cheerleader 1, 3, 4
- Y-Teens 1, 2, 3
- Secretary Y-Teens 3
- Commercial Club 3
- Junior Play
- Annual Staff
- Glee Club 1, 2, 3
- Newspaper Staff 4
- Solo and Ensemble 3, 4
- Senior Play

Mabel Shook

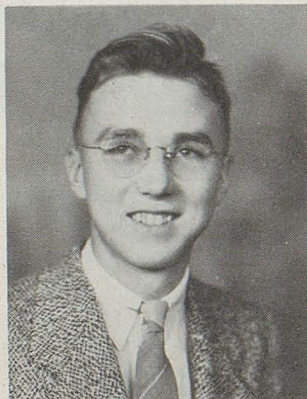


DONALD LUDWICK
 "Don"

I have fought a good fight, I have finished my course.

- Football 2, 3, 4
- Basketball 2, 3, 4
- Band 1, 2, 3, 4
- Glee Club 2
- Annual Staff
- F. F. A. 1, 2
- Newspaper Staff
- Solo and Ensemble 3, 4
- Projector Club 2, 3, 4

Don Ludwick



LEERIE SUMMERS
 "Rabbit"

Men of few words are the best of men.

- Scholarship 1, 3
- Glee Club 1
- Annual Staff

Best of Luck, Leerie



MARY KURTZ
 "Mare"

Welcome as the flowers in May

- Band 1, 2, 3, 4
- Orchestra 1, 2, 3, 4
- Band Librarian 3
- Y-Teens 1, 2, 3, 4
- Newspaper Staff
- Commercial Club 3
- Solo and Ensemble 1, 2, 3, 4
- Glee Club 4
- Annual Staff
- Football Queen Attendant 4
- Senior Play

Mary Kurtz

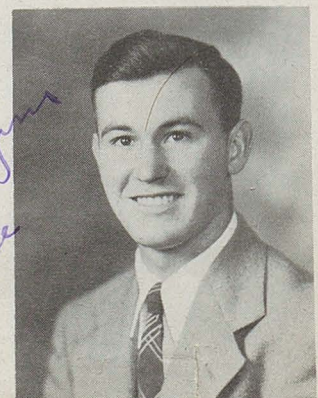


MARY SCHWARTZ
 "Twink"

Like a shining star, small but bright.

- Scholarship 2, 3
- Y-Teens 1, 2
- Home Economics Club 1, 2
- Home Economics Treasurer 2
- Commercial Club 3, 4
- Newspaper Staff 4
- Annual Staff

Good Luck Mary

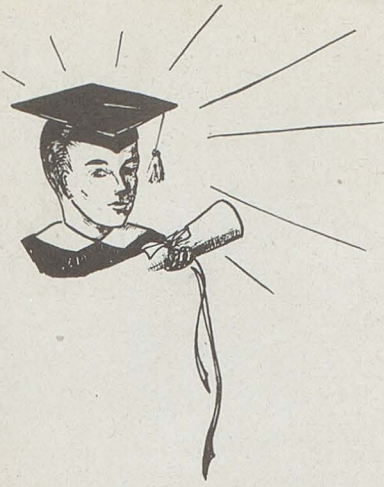


WARREN SHOOK
 "Speed"

I am slow but contented.

- Football 1, 2, 3, 4
- F. F. A. 1, 2, 3, 4
- F. F. A. Treasurer 3, 4
- Vice President 2
- Annual Staff
- Newspaper Staff

Good Luck Warren Shook



EDWARD MURPHY
"Pat"

A boy who makes the best of things wherever he finds them.

Class Treasurer 1
Band 2, 3, 4
Hi-Y 2
Band Vice President 4
Annual Staff Editor
Glee Club 1
Scholarship 1, 2, 3
Junior Play
Senior Play



VERA PAVKOV
"Ver"

I am not born for one corner, the whole world is my native land.

Home Economics 1, 2, 3
Home Economics V. Pres. 3
Commercial Club 3, 4
Junior Play
Annual Staff
Glee Club 3
Newspaper Staff
Scholarship 2
Librarian 1, 2, 3, 4

*Yours truly
Vera
"48"*

JULIA RHOADES
"Judy"

As merry as the day is long.

Cheerleader 2, 3, 4
Y-Teens 1, 2, 3
Home Economics 1, 2, 3
Commercial Club 3
Annual Staff
Newspaper Staff



*Best wishes
"Judy"*



*To a swell guy
- Don -*

DONALD NEIDERT
"Don"

Good nature and good sense always join.

Glee Club 1, 2
Annual Staff
Newspaper Staff

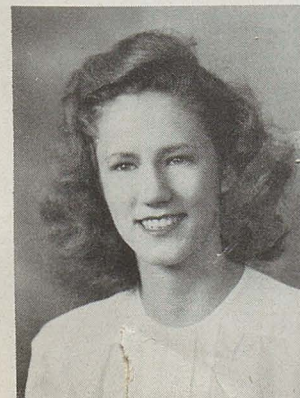
*Lots of Luck
- Carol -*

*Remember our friend?
Senior year?
Hazel Mae*

HAZEL MAE STREET
"Puddles"

She charms whoever she chances to meet.

Student Council 1, 3
Band 2, 3, 4
Orchestra 2, 3
Band Librarian 2, 3
Class Treasurer 2
Junior Class Play
Newspaper Staff
Commercial Club 3, 4
Ensemble 2, 3, 4
Annual Staff
Y-Teens 4



CAROL WITTMAN
"Toots"

Her friends there are many, her foes — are there any?

Band 2, 3, 4
Orchestra 4
Home Economics 1, 2, 3
Y-Teens 1, 2, 3, 4
Y-Teens Treasurer 4
Librarian 3
Annual Staff
Commercial Club
Newspaper Staff

NORMA JEAN SMITH
"Smittie"

Which of her lovers ever found her true?

Band 1, 2, 3, 4
Glee Club 1, 2, 4
Commercial Club 3
Y-Teens 1, 2, 3, 4
Annual Staff 4
Newspaper Staff
Ensemble 2, 3, 4

*Best of Luck
Norma Jean*





*Best Wishes
Carol Simmons*

CAROL JEAN SIMMONS
"Carol"

Does she giggle, well, just ask her friends.

- Band 1, 2, 3, 4
- Glee Club 1
- Home Economics Club 1, 2, 3
- Home Economics President 3
- Y-Teens 1, 2, 3, 4
- Y-Teens Social Chairman 4
- Commercial Club 4
- Clarinet Ensemble 1, 2, 3, 4
- Annual Staff
- Newspaper Staff
- Orchestra 4
- Senior Play



*Lots of Luck
Patricia*

PATRICIA HARDGROVE
"Pat"

A girl rich with common sense.

- Y-Teens 1, 2, 3, 4
- Y-Teens Chaplain 2
- Y-Teens President 4
- Y-Teens Vice President 3
- Band 1, 2, 3, 4
- Band Librarian 2, 3
- Glee Club 1, 2
- Orchestra 2, 3, 4
- Scholarship 1, 2, 3
- Commercial Club 3
- Class Secretary 2
- Assistant Annual Editor
- Junior Play
- Student Congress 3
- Music Ensemble 1, 2, 3, 4
- Senior Play



*Lots of Luck
Winona*

WINONA NICHOLAS
"Nicky"

Character is greater than any career.

- Home Economics 1, 2, 3
- Home Ec. Club Secy. 3
- Commercial Club 3, 4
- Annual Staff
- Newspaper Staff



JOAN McARDLE
"Mickey"

I may not say much, but thoughts are deep.

- Y-Teens 1, 2
- Annual Staff
- Junior Play
- Commercial Club 3, 4
- Glee Club 1, 4
- Home Economics Club 1
- Newspaper Staff

*Lot of Luck
Joan Mickey*

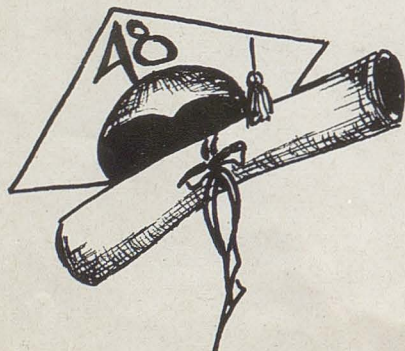


MARY RHOADES
"Freckles"

Magnificent spectacle of human happiness.

- Y-Teens 1, 2, 3
- Home Economics 1, 2, 3
- Commercial Club 3
- Annual Staff
- Newspaper Staff

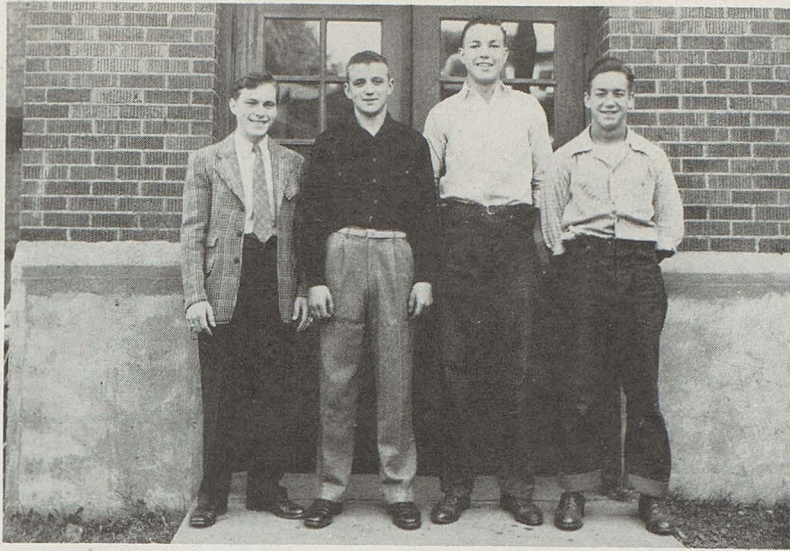
*Best Wishes
Freckles*



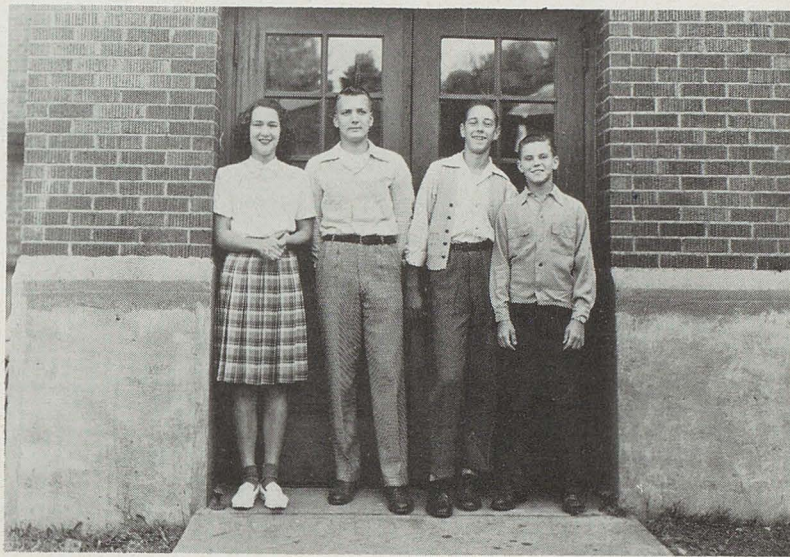
We have been friends together
In sunshine and in shade.

— Caroline Norton





JUNIOR CLASS OFFICERS



SOPHOMORE CLASS OFFICERS



FRESHMAN CLASS OFFICERS

The C L A S S E E S



"49"

JUNIORS

First Row: Harlan Davis, Marion Helmuth, Donald Nelson, Edward White, Thomas Stanford, James Donnewirth, James Colopy, Gene Sibila, Glenn Sibila, Earl Scheetz, Betty Huddleston, Leila Schroeder, Barbara Krites.

Second Row: Elaine Heather, Sally Gordon, Beverly Klein, Alice Arman, Shirley Mauger, Robert Stanford, Nathalie Nicholas, Iola Mae Ochsenbein, Evelyn Stocker, Marilyn Gill, Barbara Ries, Martha Markham.

Third Row: Ruth Krites, Carol McClay, Carol Lawrence, Charles Suchka, Walter Perry, Richard Ries, Ruth Moore, Laura Bauman, Janet Pitz, Wanda Greenhoe, Mary Ann Hahn, Martha Schmachtenberger, Mr. Knight.

Fourth Row: Ray Bremkamp, John Colopy, Lawrence Hann, Gerald Davidson, Donald Hallet, Ralph Suderow, Chester Smith, John Gibbs, Phillip Dittmer, Victor Foxx, Jack Rossiter.



"50"

SOPHOMORES

First Row: Evelyn Jolliff, Virginia Fricke, Carl Koppes, Joyce Wallace, Edna Gill, Irene Suchka, Janet Bauman, Robert Lockhart, Bruce Sullivan, Gloria Nicholas.
 Second Row: Don Schwendiman, Phillip Moore, Dorothy Zuni, Mary Lou Bauman, Donald Shilling, Ervin Dye, Roland Lindsay, Richard Davis, Duane Ellis, Miss Simpson.
 Third Row: Pauline Wolgamott, Pauline Hardgrove, John Jastraub, Merlin Kerstetter, Calvin Knotts, David Baughman, Jack Ames, Larry Kobie, Dorothy Moore, Joanne Duncan.



"51"

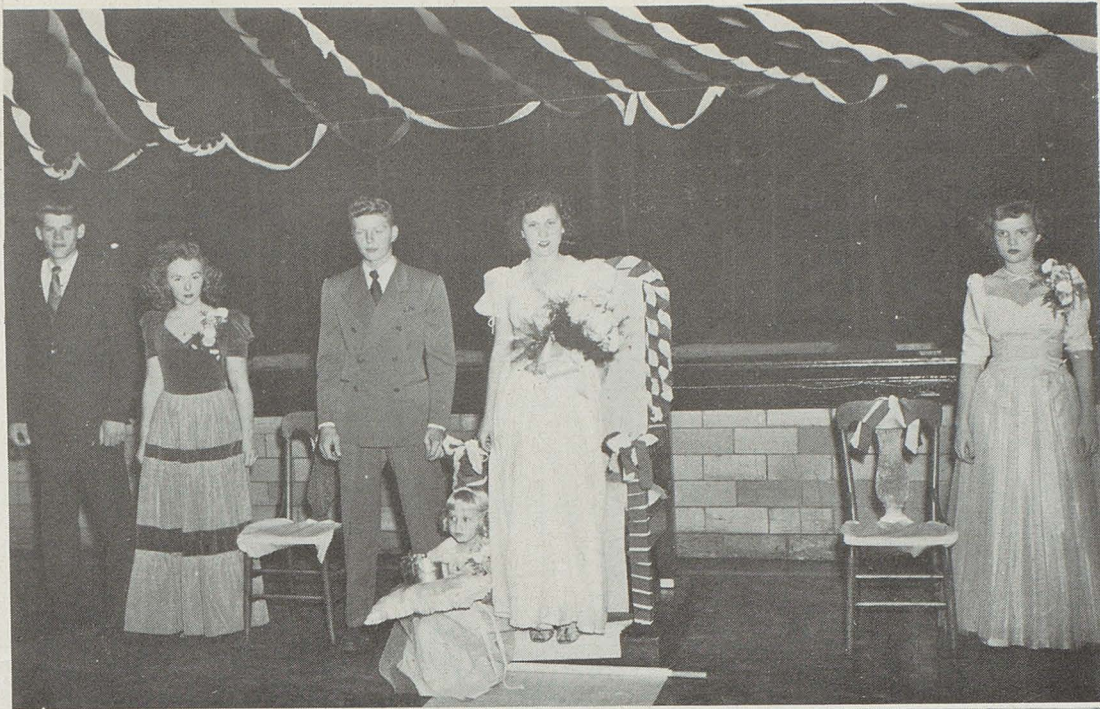
FRESHMEN

First Row: Aletha Weaver, Mary Ellen Dye, Joan Ott, Kay McClay, Mary Jean Rohr, Mary Frances Ritchie, Shirley Byers, JoAnn Galvin, Joann Colopy, Tommy Stocker.

Second Row: Carl Zimmerman, Tom Ries, Genieva Swisher, Shirley Carver, Carol Harbaugh, Donald Reichenbach, Wanda Boyd, Theresa Martin, Donald Hague, Miss Fletcher.

Third Row: Ruth Ann Schroeder, Robert Hiltbrand, Bonnie McArdle, Carl Krites, Doris Flake, James Shull, Carolyn Schmachtenberger, Elizabeth McCabe, Joanne Bergener, William Smail.

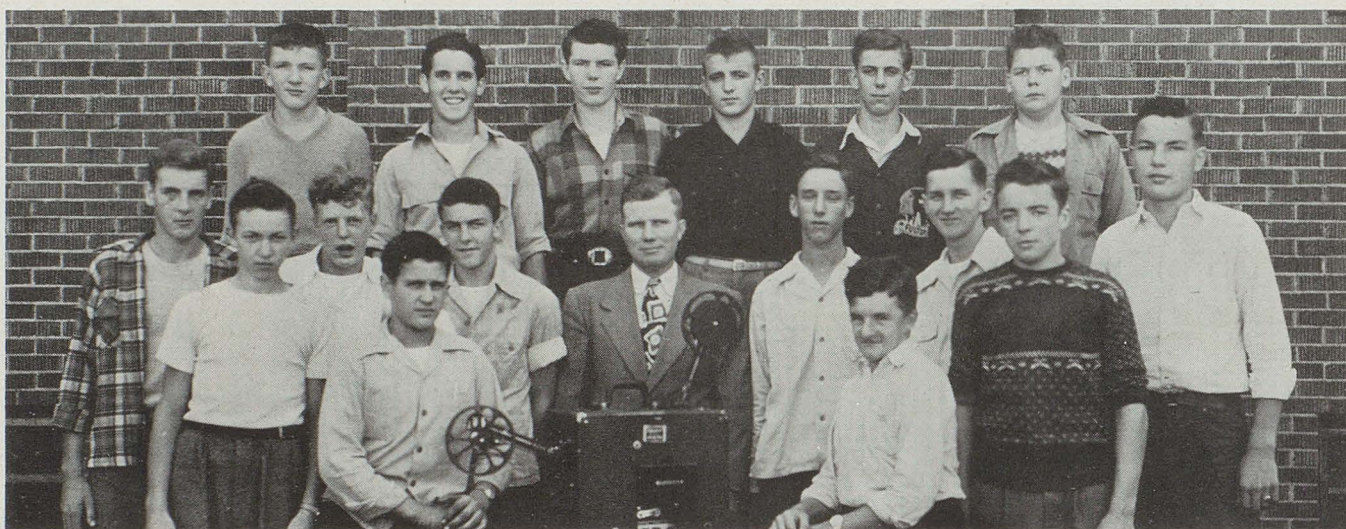
Fourth Row: Mary Lou Burwell, Harry LeBerth, Harold Krites, John Dittmer, Ray Baughman, John Stockert, Theodore Koppes, Melvin Cormany, Mary Lou Jones, Betty Nicholas.



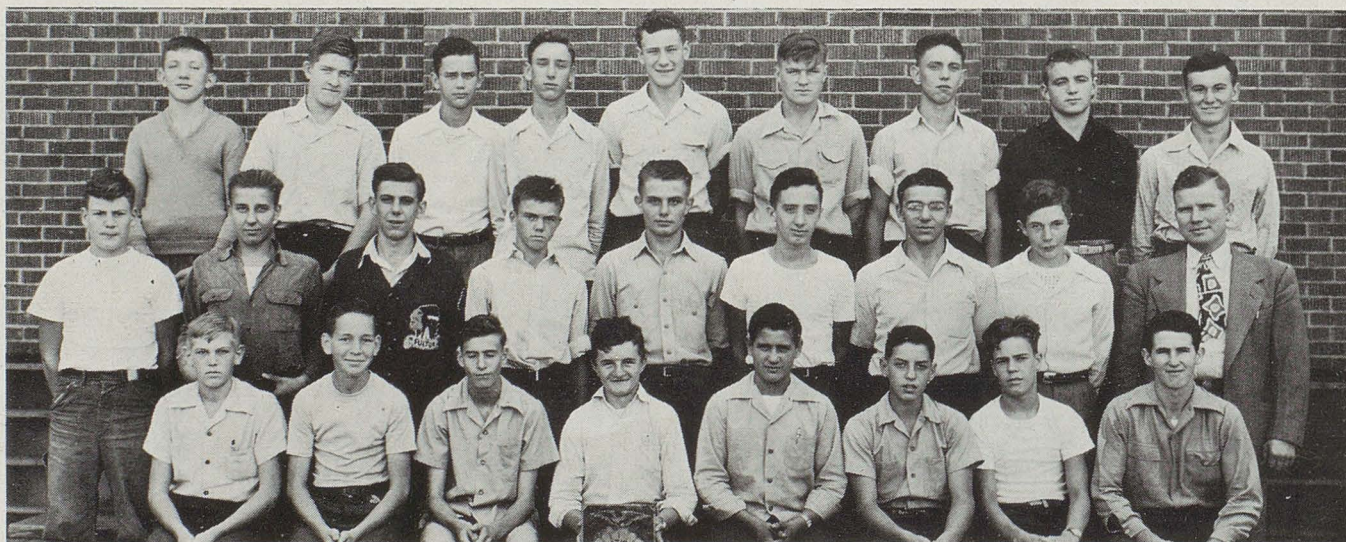
ACTIVITIES



COMMERCIAL CLUB



PROJECTOR CLUB



F. F. A.

Compliments of Jim Gilmor



HOME ECONOMICS CLUB



LIBRARIANS



Y-TEENS

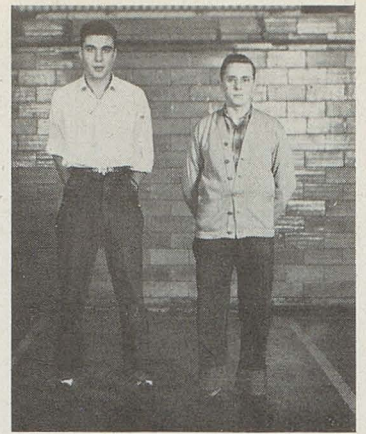
Compliments of Finetrock Bros.



SPORTS



EDITORS



BUSINESS



SENIORS



ART

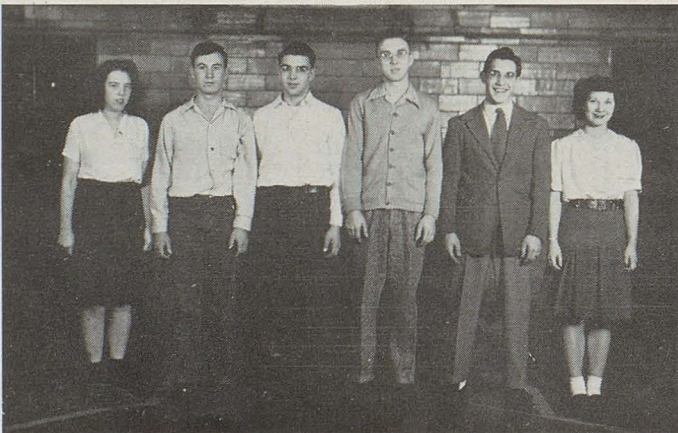


ACTIVITIES



MUSIC

1948
FULTONIAN



PHOTOGRAPHS



TYPISTS

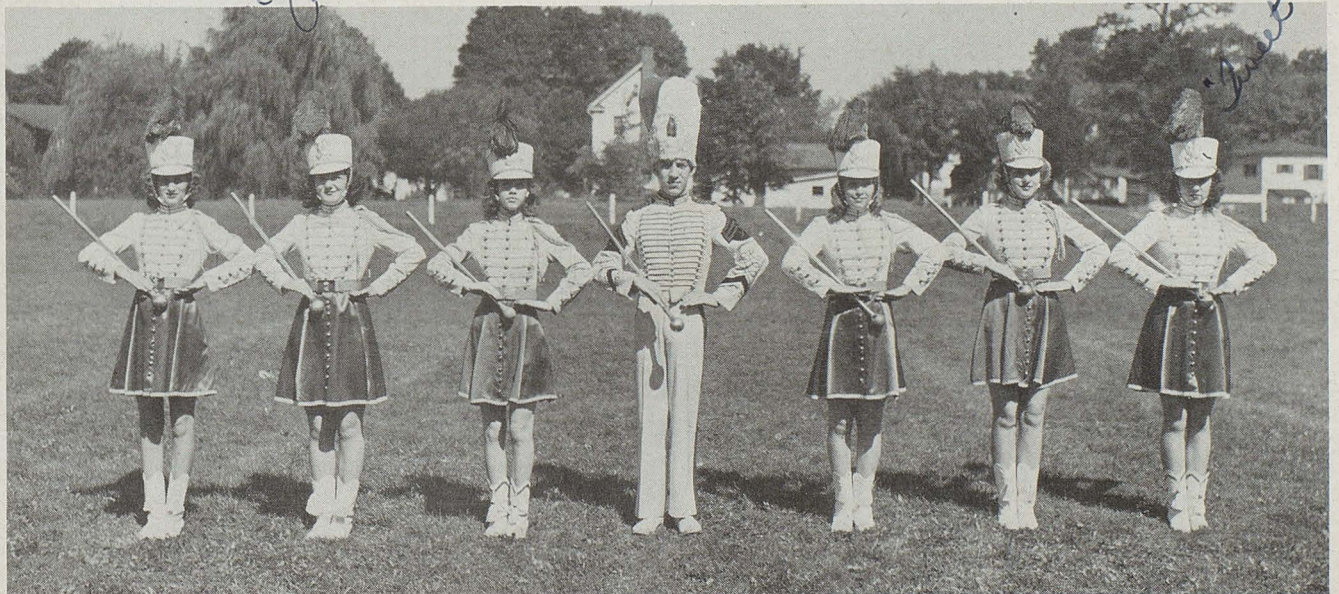
Compliments of Jolliff Barber Shop



MR. PUFFENBERGER



MUSIC



Marjorie, Carol, Patsy, Gene, Janet, Mary Lou, Elizabeth

We the Seniors wish to take this opportunity to thank Mr. Puffenberger for his fine leadership of our band. This organization has very capably handled a full schedule. We played at all the home football games. Last fall we were invited to give a performance at the Cleveland Brown's, Los Angeles Don's football game on October 12 at the Cleveland Stadium. Canal Fulton sponsored the Northeast District Band Clinic in which our band read through the class C music of the 1948 music list.

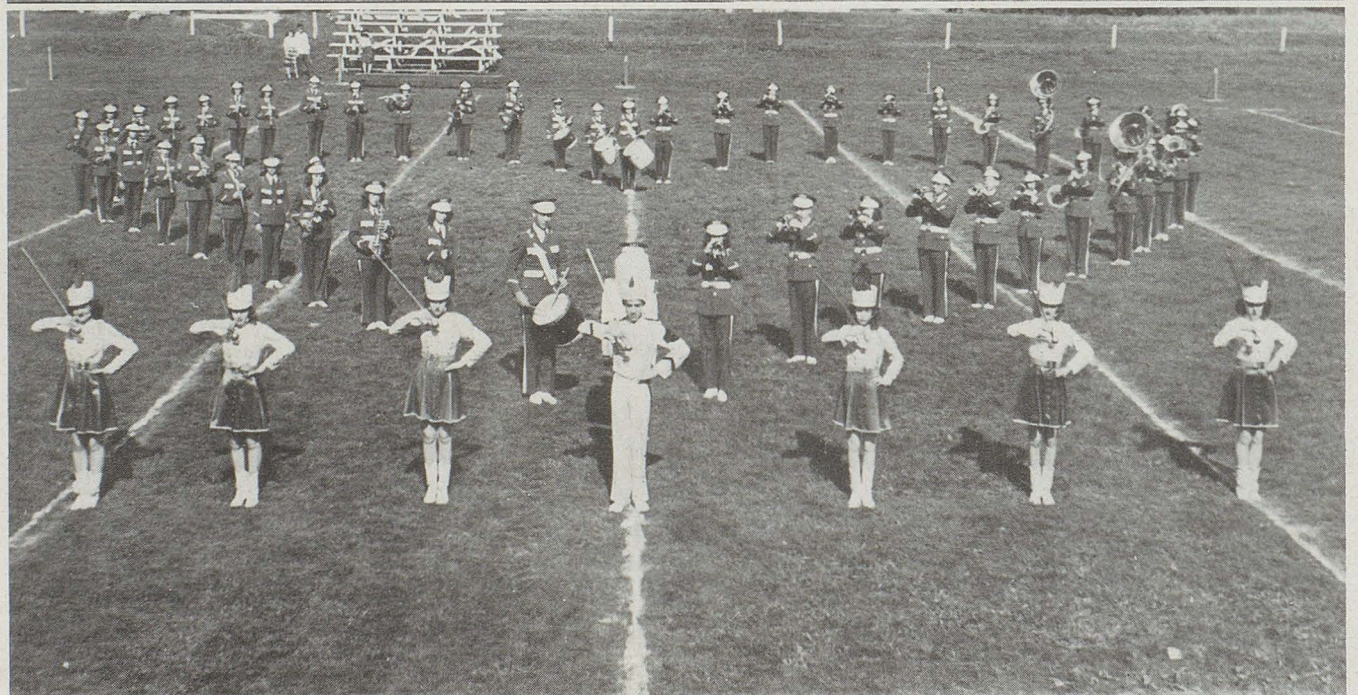
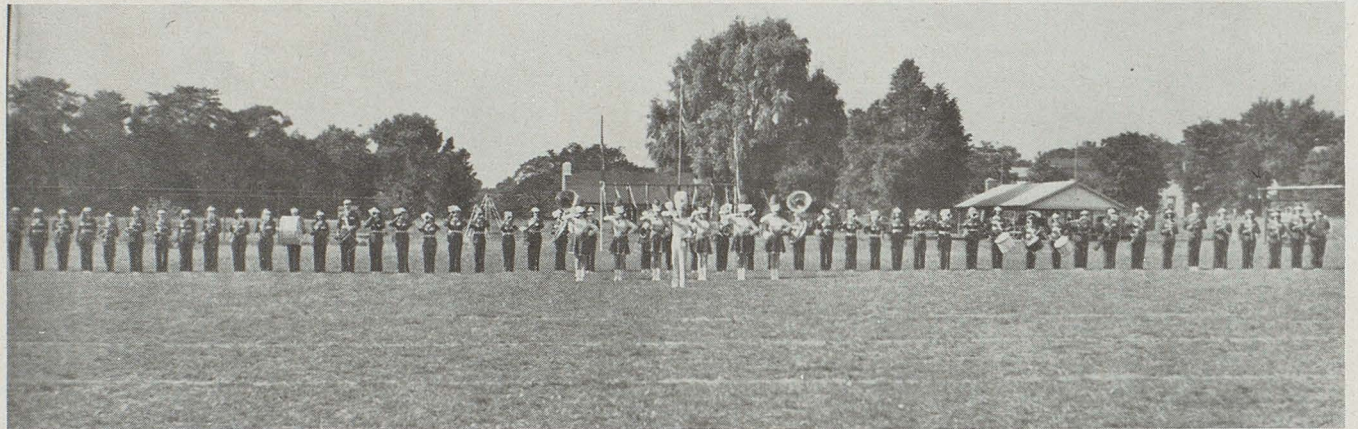
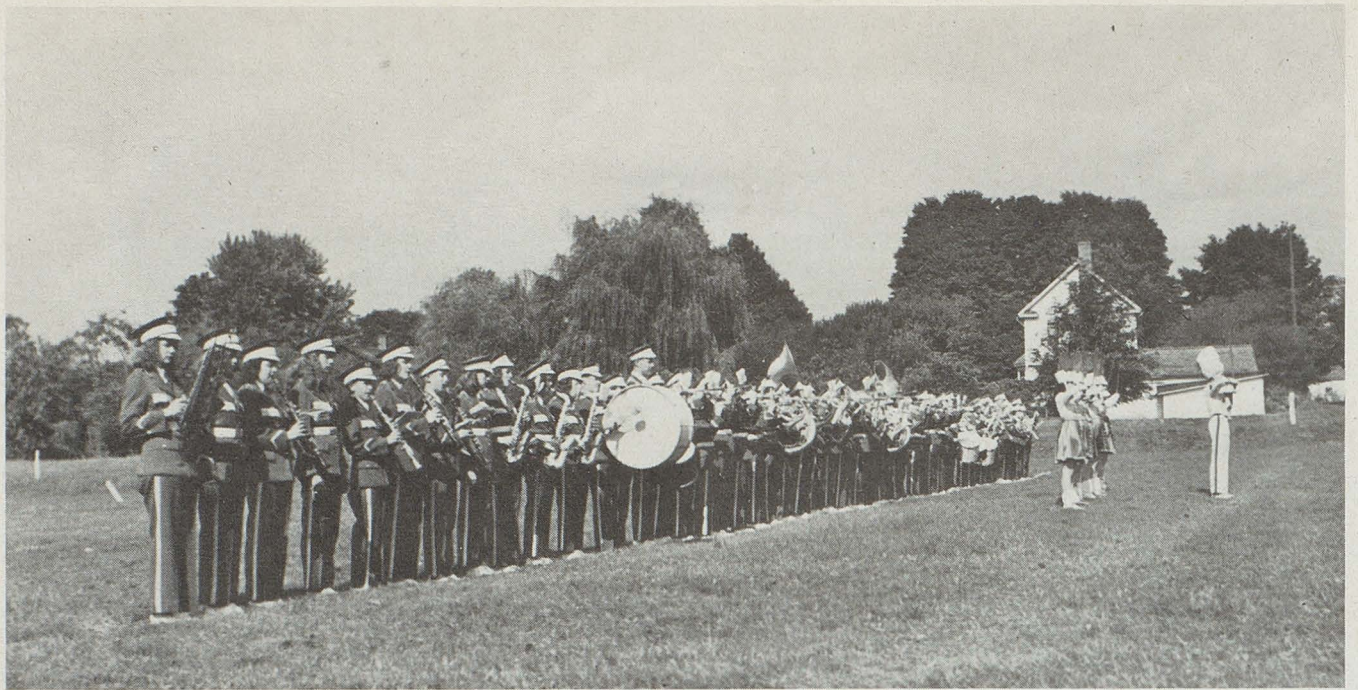


Compliments of Ray Remark and Son, Phone 2214

A great number of our band participated in the Solo and Ensemble Contest at Baldwin Wallace College in Berea, Ohio. The Canal Fulton Band also participated in the Northeast District band contest on April 23 and 24. We gave a December, a February and the Annual Spring Concerts. All we band members have enjoyed band very much and wish to thank Mr. Puffenberger heartily for giving so freely of his time and talent to make such a fine year possible for us.



Compliments of R. E. Hardgrove Coal Co.



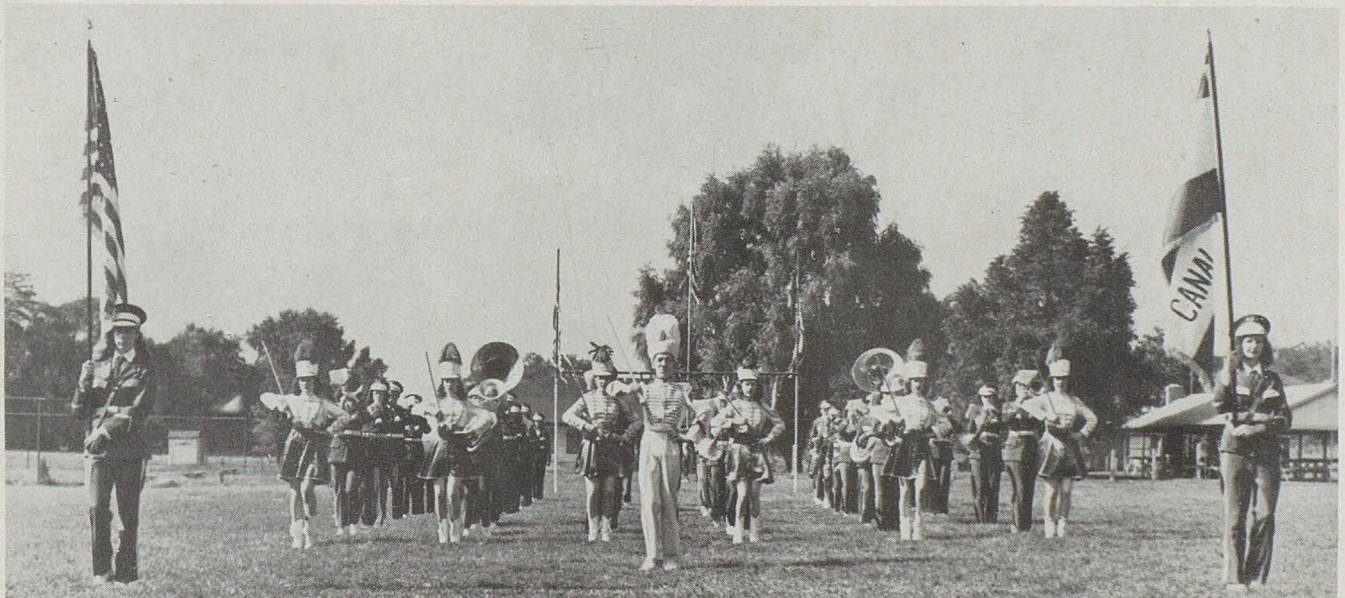
Compliments of Kettlers Restaurant



GLEE CLUB



ORCHESTRA

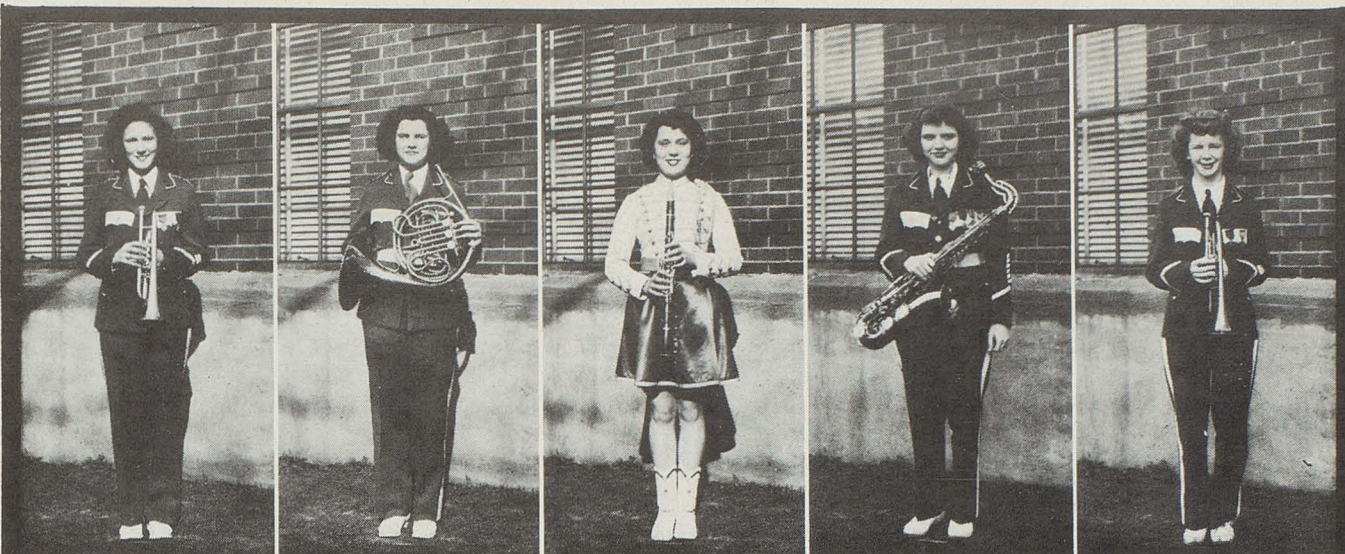


Compliments of Green Electric



SOLOS
and
ENSEMBLES





Carol Wittman

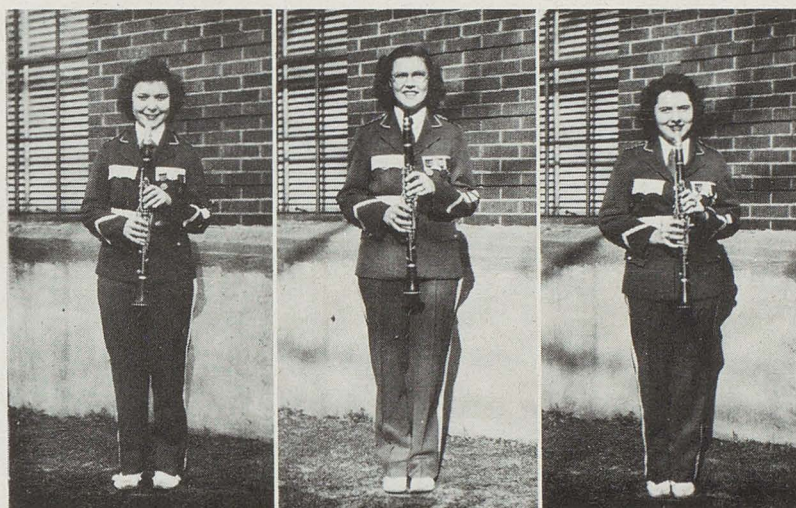
Norma Jean Smith

Elizabeth Hardgrove

Mary Kurtz

Mabel Shook

1948
**B
A
N
D**



Carol Simmons

Patricia Haraagrove

Hazel Street

**S
E
N
I
O
R
S**



Glen Lautzenhiser

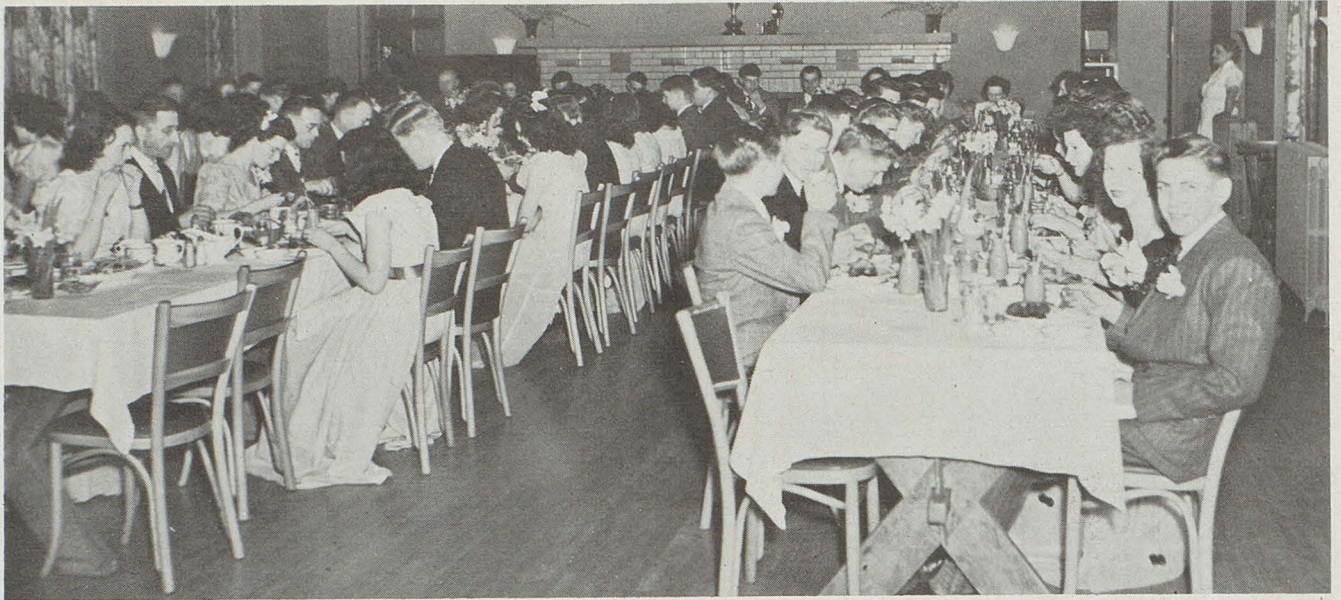
James Butler

Donald Ludwick

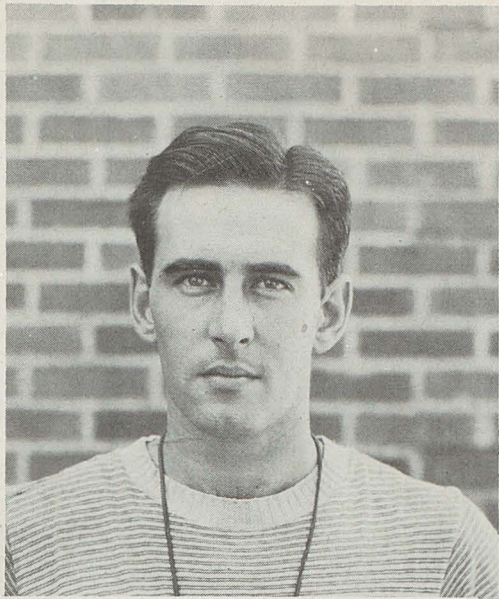
Delbert Burwell

Edward Murphy

Compliments of Dr. R. J. Swoger

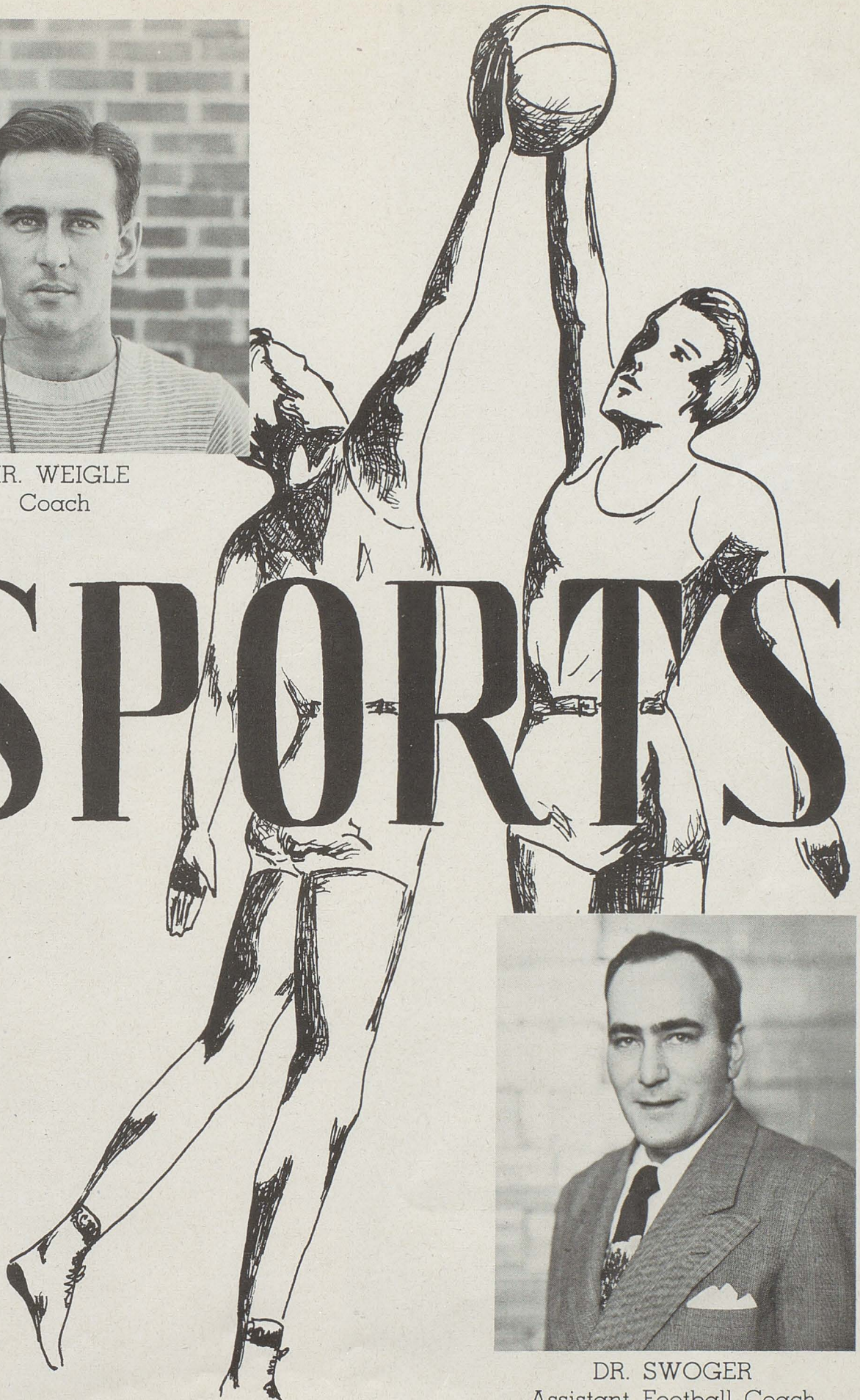


Compliments of Waldorf Dairy



MR. WEIGLE
Coach

SPORTS



DR. SWOGER
Assistant Football Coach



'Don'



Glenn



Jack



'Don'



'Rube'



FOOTBALL SQUAD

1st Row: Ellis
Kobie
Knotts
Smail

3rd Row: Foxx
Sibila
Colopy
Mr. Weigle
Butler

2nd Row: Albright
Burwell
Shull
Ludwick
Gordon
Greenhoe
Shook

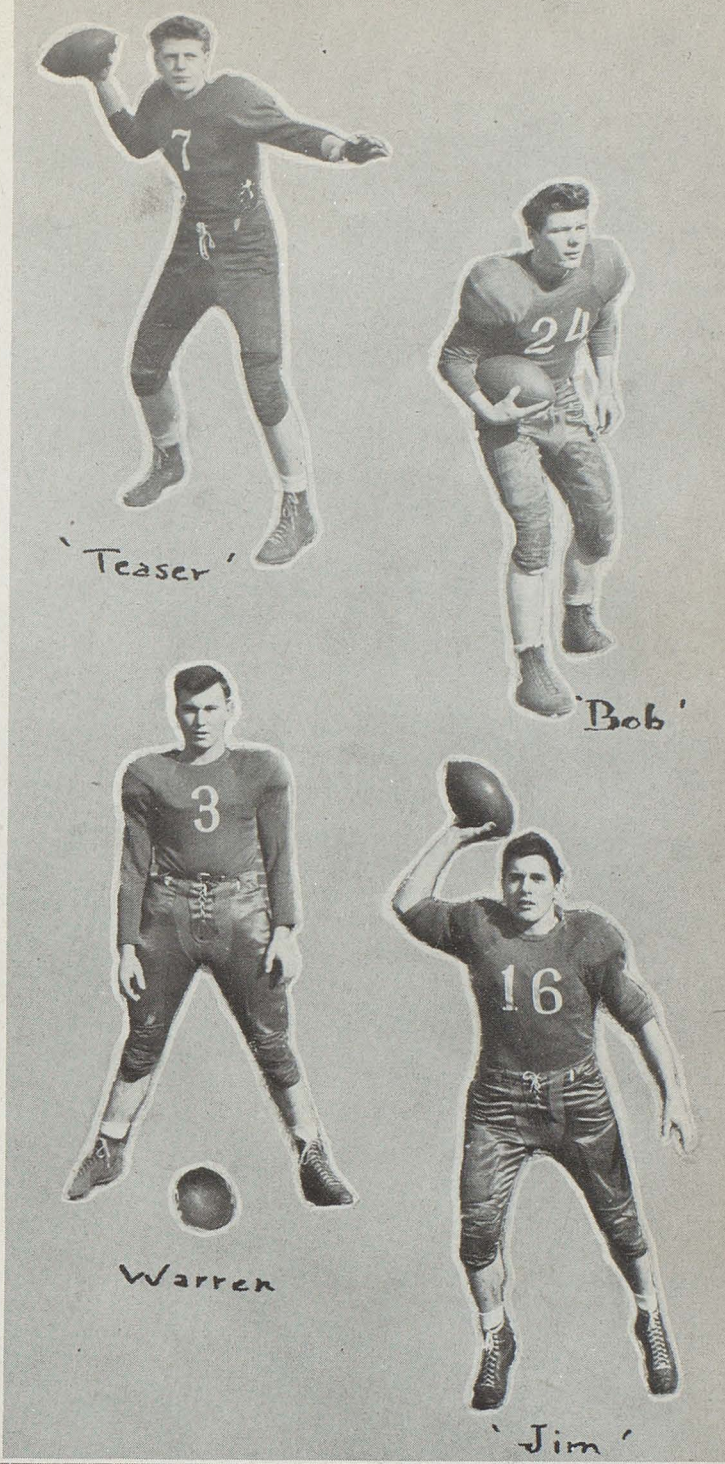
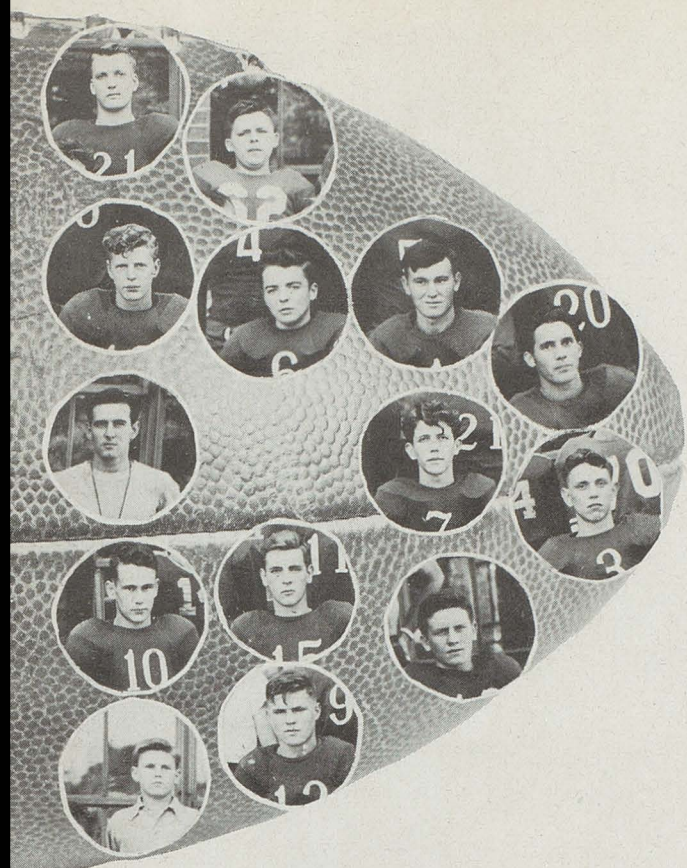
4th Row: Helmuth
Colopy
Smith
Davidson
Hallett
Hann

5th Row: Cormany
White
Sullivan
Dittmer
Stanford

STARK COUNTY CHAMPIONS



Compliments of
Fulton Dry Cleaning, Johnny Shull

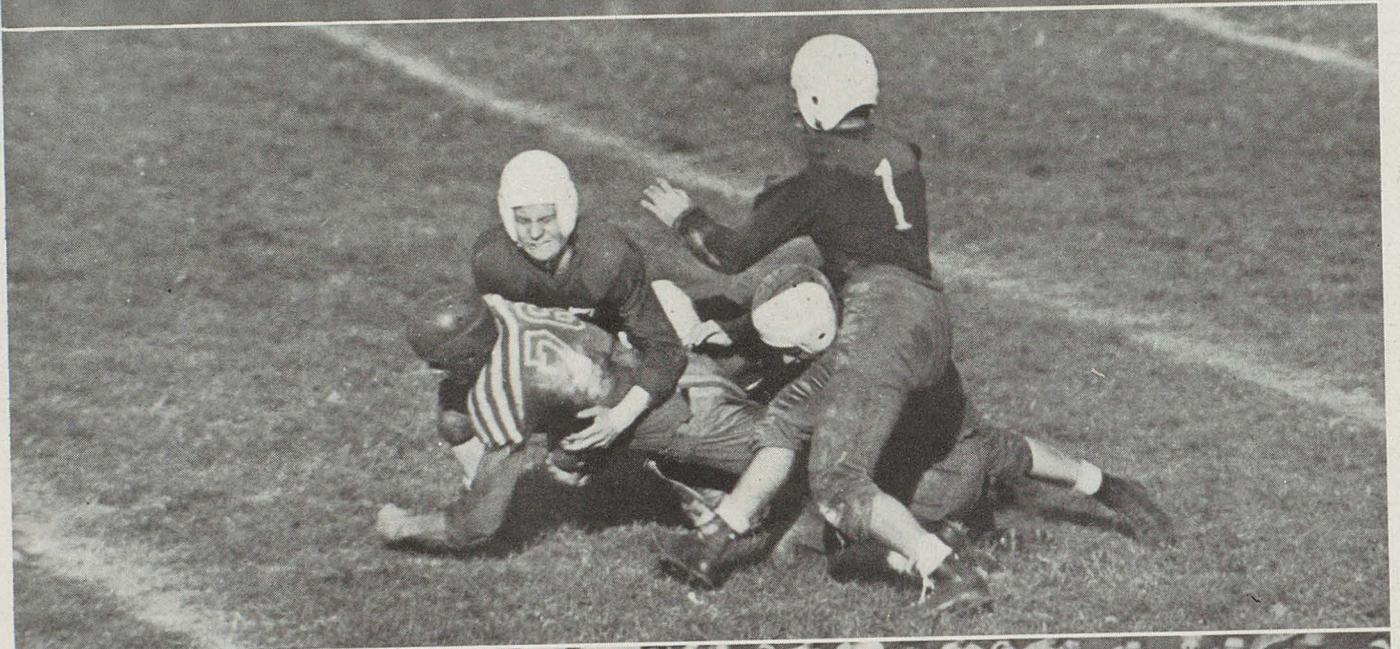
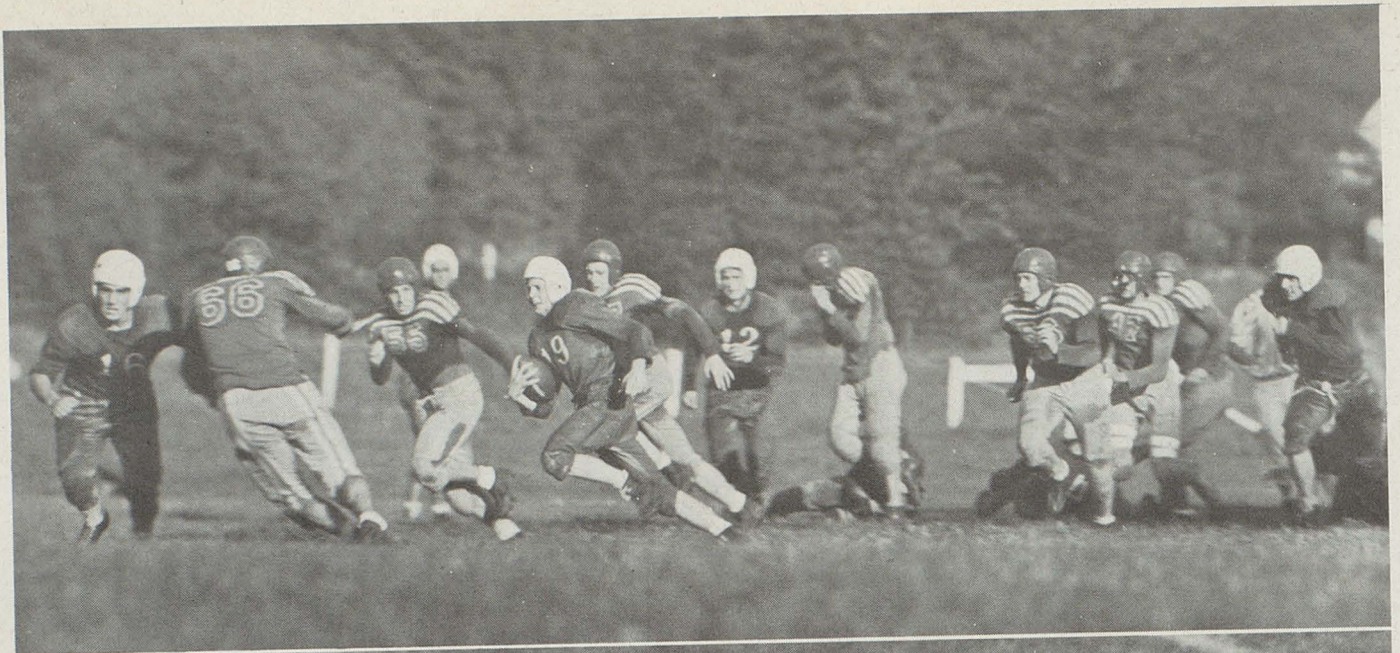


FOOTBALL SCHEDULE

	We	They
Rittman	6	31
Brewster	0	0
Barberton	27	20
Hartville	54	0
East Canton	12	28
Jackson	0	12
Navarre	18	33
Middlebranch	6	7
Massillon Preview	{ Navarre 0 Fulton 6	

Compliments of
Arthur McGrew, Rexall Druggist





Compliments of Blank Coal Co.



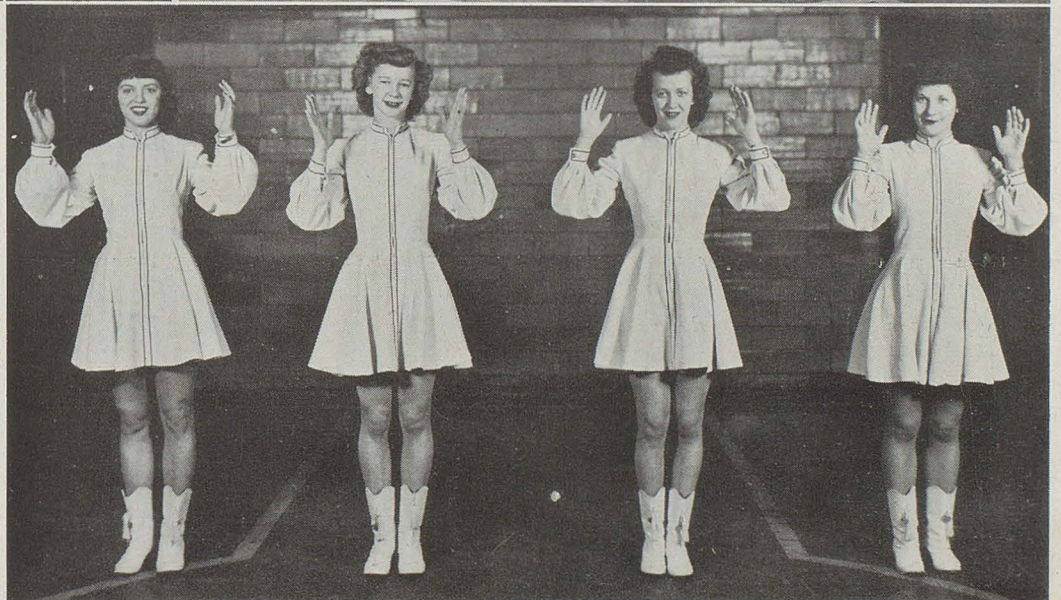
HOMECOMING

OF

1947



SALLY
MABEL
BEVERLY
JUDY



Compliments of Fulton Feed and Supply



'Bob'



'Don'



'Teaser'



STARK COUNTY LEAGUE
(1948 Stark County)

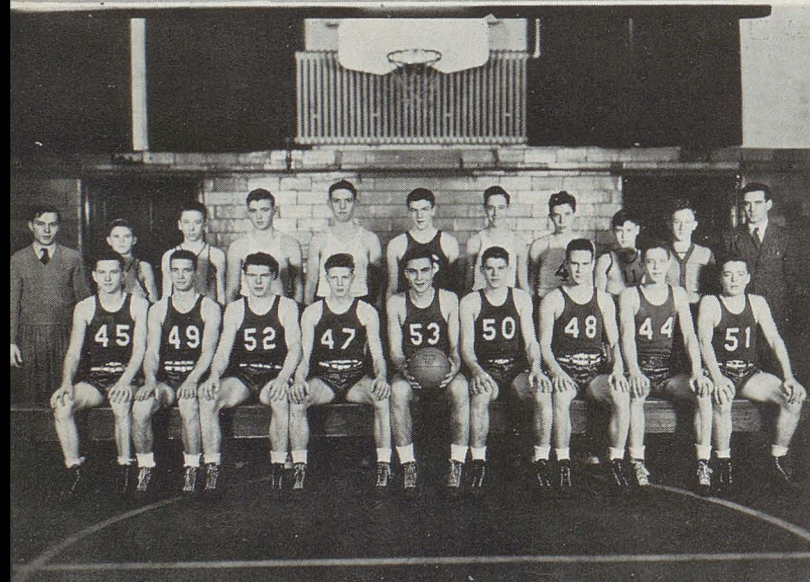
BASKETBALL SQUAD

First Row

Jim Colopy, Manager
Vic Foxx
Don Ludwick
Bob Shull
Delbert Burwell
Don Albright
Merle Gordon
Jack Greenhoe
John Colopy
Mr. Weigle, Coach

Second Row

Philip Moore, Assistant Manager
Carl Zimmerman
Duane Ellis
Larry Kobie
Lawrence Hann
Don Hallett
Chester Smith
Ray Bremkamp
Merlin Kerstetter
Bruce Sullivan
Dick Davis, Assistant Manager



Compliments of Fulton Flower Shop

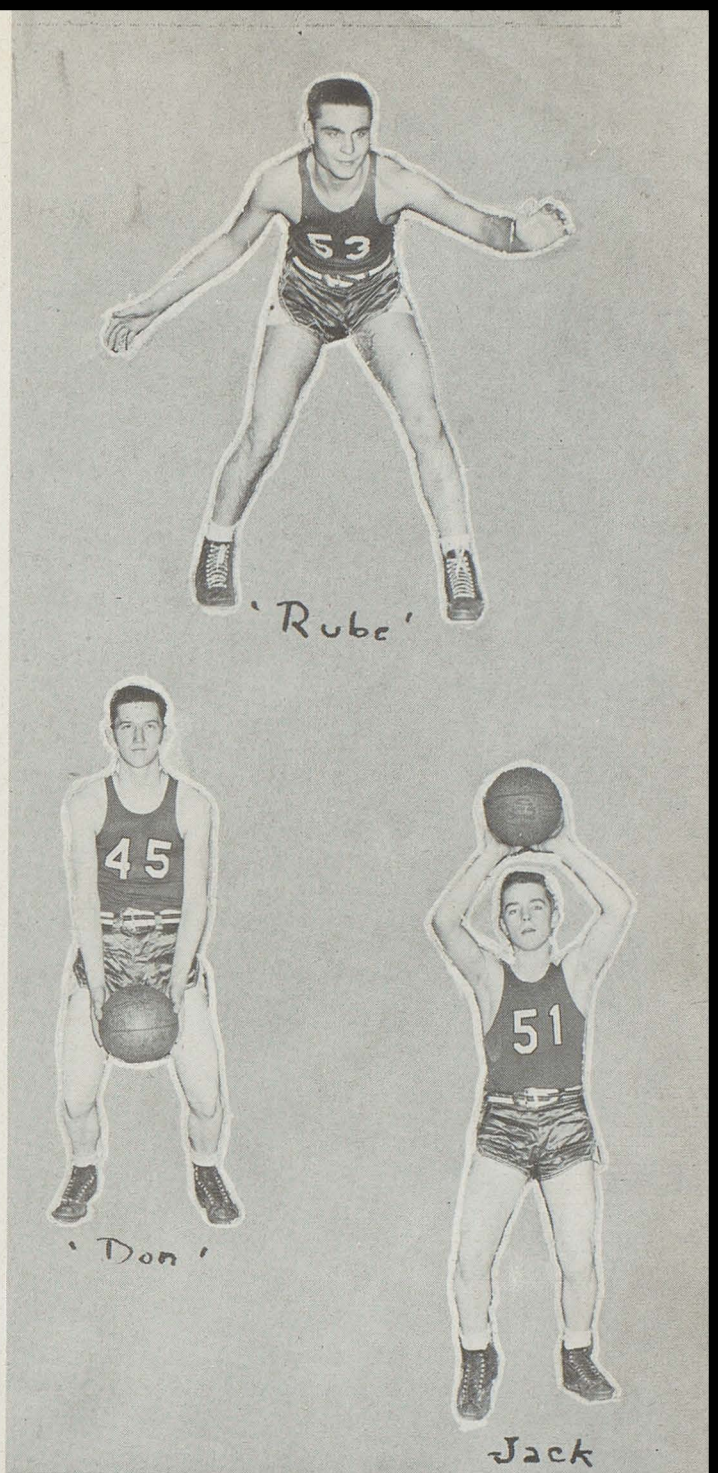


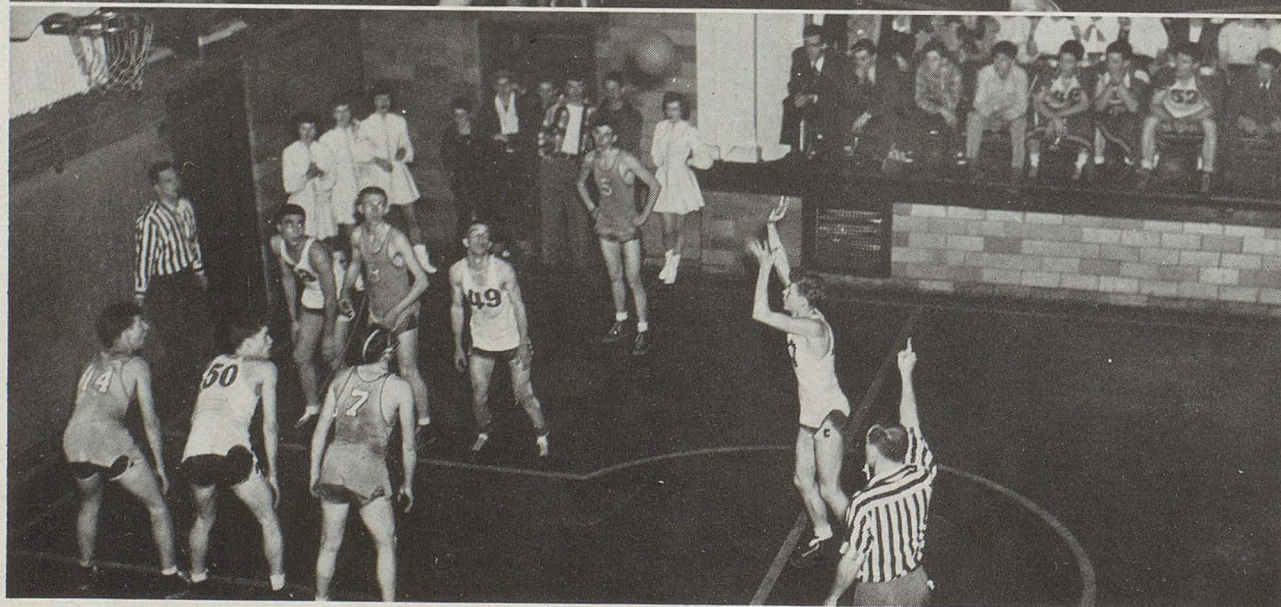
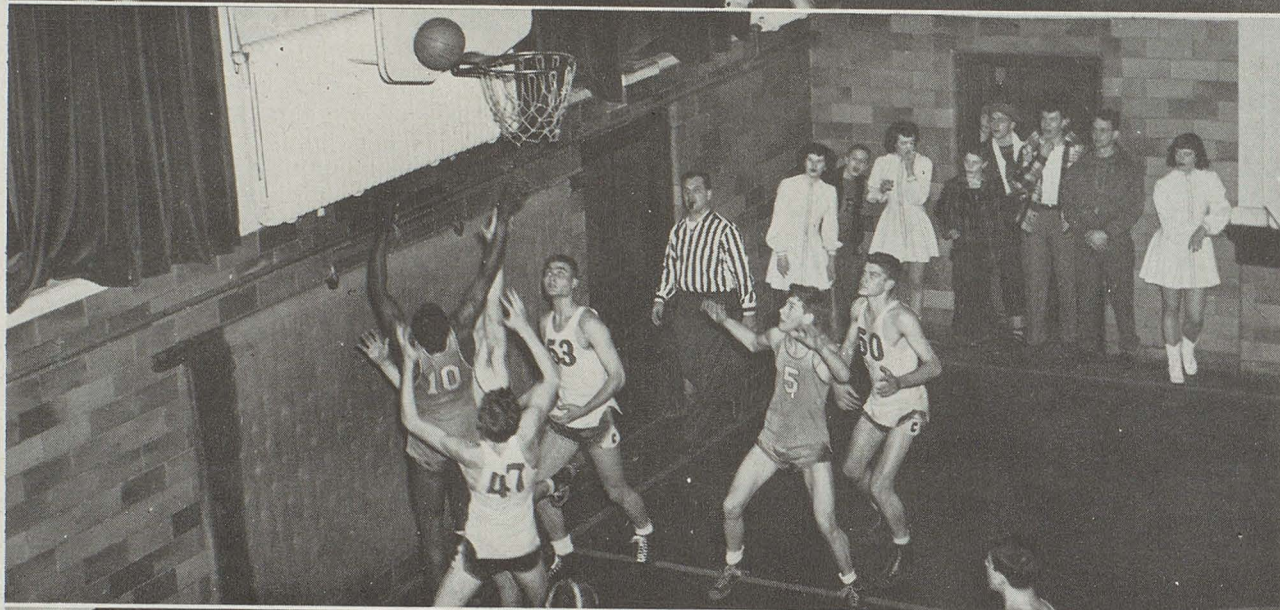
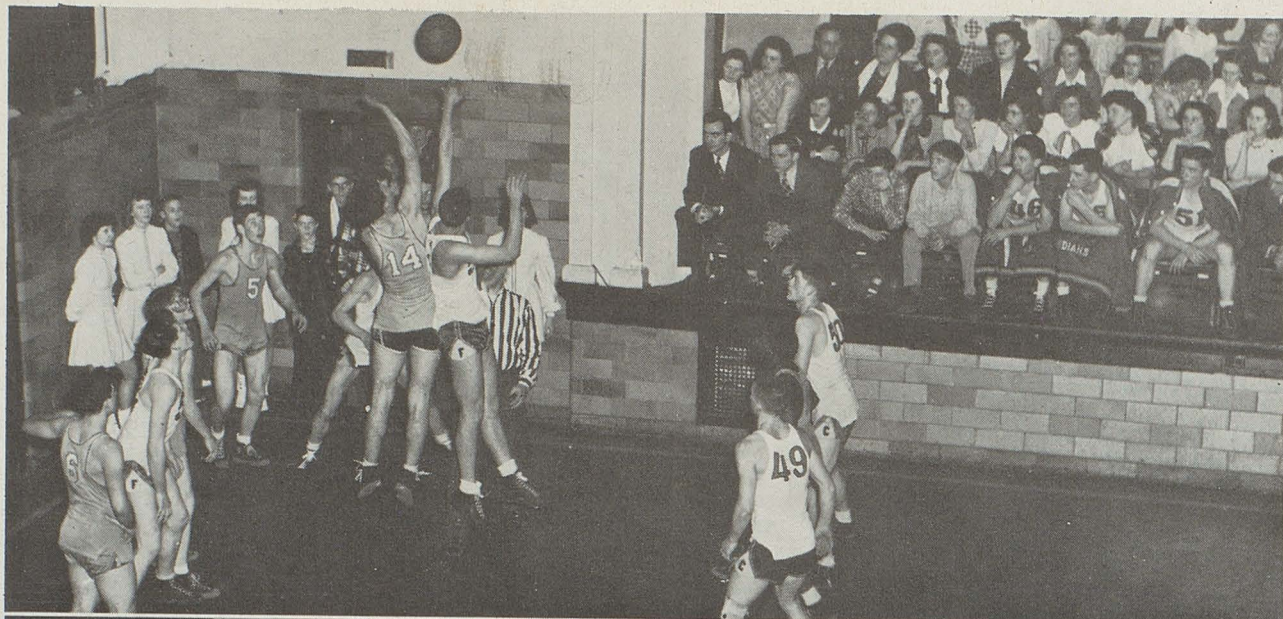
BASKETBALL CHAMPIONS
(Consolation Winners)

1947-1948 BASKETBALL SCHEDULE

	They		We
Orrville	29	Fulton	27
Brewster	18	"	22
Jackson	39	"	37
Middlebranch	36	"	46
Dundee	23	"	33
Beach City	24	"	39
Uniontown	20	"	60
Waynesburg	28	"	35
Dalton	46	"	60
Dover St. Joseph	50	"	65
Navarre	50	"	70
Hartville	34	"	57
Greentown	33	"	47
East Sparta	43	"	57
East Canton	34	"	35
Marlboro	33	"	57

Compliments of Adams Grocery





Compliments of The Fulton Super Market

ALUMNI

CLASS OF 1878

Frank A. Fisher
J. Wesley Blier
Frances Houck

CLASS OF 1880

Alden J. Kittinger
James J. Easley
Alpheus W. Jackson
Anna M. Daler
Louisa Eckroad
Philomena Steiner
Flora Bergold

CLASS OF 1881

Arthur E. Breece
Charles E. Freet
Charles E. Jackson
Wm. E. Kittinger
Thomas J. Leeser
Nathan C. Miller
B. B. Rayle
C. M. Shafer
Albert B. Wagner
Anna M. Brown
Maud Kirk

CLASS OF 1882

Reese H. Clark
Thomas D. Wagner
John C. Wiser
Albert B. Showers
Abbie J. Porter
Callie McLaughlin
Clara Moke

CLASS OF 1883

Ed. E. Wagner
Grace A. Kurtz
Florence Breece

CLASS OF 1884

E. L. Gilcher
Harry G. Kurtz
Ed. C. Miller
James E. Pomeroy
George F. Pollock
William H. Wagner
Louisa Forst

CLASS OF 1885

Ulysses Houriet
Hattie Buckmaster
Elva B. Danner
Cora B. Elliott
Nellie Hoover
Clara Stover

CLASS OF 1886

Edwih B. Robinson
T. J. LaCroix
James T. McLaughlin
Freeman A. Leeser
Ella May Wagner
Mary M. Houriet
Ella M. Murphy
Etta Kirk
Katie E. Henry

CLASS OF 1887

Phidello Smith
Fanny M. Breece
Aida L. Harmon
Katie M. Flynn
Ellen B. Leaver

CLASS OF 1888

Samuel R. Bachtel
Wm. P. Evans
D. E. McGee
John L. Liggett
Samuel G. Zimmerman
Slatthiel M. Liggett
Wm. H. Harter
John S. Hoover
Edmund D. Eckroad
Albert C. Ackerman
Effie F. Harter
Emma C. Donnenwirth
Chloe E. Kittinger
Emma A. Moke
Lucy N. Yockey

CLASS OF 1889

Arthur R. Albright
Samuel E. Elliott
George Fellmeth
Edward J. Hammer
Charles W. Kirk

Horace G. Kirk
Russell R. Robinson
Thomas M. Sterling
Anna Edwards
Zelina E. Houriet
Luella B. Landrock
Mary L. Liggett
Frankie E. Murphy
Bertha E. Porter
Myrtle M. Porter
Jennie Sandoe
Minnie F. Taggart
Flora Williams

CLASS OF 1890

George B. Fulton
Wesley F. Houk
Clement F. Housman
F. E. Mobley
Ada L. Jackson
Maud E. Porter
Lulu M. Porter
Belle Kirk
Emma E. Leeser
Clara L. Labbe
Anna L. Pomeroy
Minnie M. Oberlin

CLASS OF 1891

Harley H. Robinson
Paul B. Patterson
Cyrus R. Myers
Annie Robinson
Florence E. Davis
Adella M. Donnenwirth
Nannie E. Group
Irene G. Porter

CLASS OF 1892

Herbert Shafer
Albert Fellmeth
Homer E. Moke
Dennis J. Jordan
John G. Schroeder
Charles Ruch
Charles C. Reinoehl
Otis G. Stover
Maggie M. Easley
Edith J. Elliot
Emma A. Forst
Edith H. Hoover
Lillian G. Schillinger
Jennie G. Kitt
Rosa B. Jackson
Alberta Schillinger

CLASS OF 1893

Archie A. Campbell
Truman Buckmaster
George P. Stover
Meta E. Buck
Grace Moore
Anna A. Eckert
Lizzie L. Fishley
Daisy M. Ford
Meta B. Housman
Jennie C. Streeby

CLASS OF 1894

George A. Hoover
John A. Fellmeth
John M. McLaughlin
Edwin O. Ackerman
Frank F. Buckmaster
Jonathan G. Lester
Erwin H. Porter
Flora Kitt
Emma P. Blank
Marguerite E. Breen
May Kirk
Cora A. Harkins
Hattie L. Schild
Helen Elliott
Elta M. Lutz

CLASS OF 1895

Henry R. Gilcher
Harry W. Stover
Early R. Porter
Alvin L. Simmons
Florence B. Edmonds
Ella M. Gill Elfholtz
Mary Lutz
Mattie E. Hammer
Iris C. McFarland
Clara D. Simmons
Grace Yost

CLASS OF 1896

Charles W. Buck

Harry H. Brown
Harty V. Schroeder
Ira W. Lerch
Carl K. Myers
Edward E. Porter
Grier P. Mobley
Homer H. Weaver
J. A. Lloyd Weaver
Jennie C. Myers
Helen M. Ernsaw
Mary B. Danner
Emma Limbach
O. Grace Fisher
Rosa A. Breen
Lottie L. Schillinger
Eva G. Bevard
Effie M. Simpson
Esther B. Harman
Mabel C. Kitt
Mary M. Lerch
Nellie M. Breece
Cordia M. Weir
Josephine M. Herman
Olive G. Bevard
Emma M. Eippert
G. Hattie Gill
Estella Weil
Eva R. Breece
Lottie A. Riehl

CLASS OF 1897

Samuel S. Blier
Edward J. Nichter
Carl L. McFarland
Edward R. Kelly
Walter P. Fisher
J. Kirk Ott
James E. Sandoe
Homer Naftzger
Abbie McLaughlin
Ella Simmons
Jennie Wilson
Sadie Yoder

CLASS OF 1898

Lloyd Harkins
Charles V. Kittinger
Wm. Parks
Burton N. Rohrer
Clarence Stump
Grace Baichley
Maud E. Maurer
Nettie O. Simmons
Elizabeth Sorn
Rosa M. Yock

CLASS OF 1899

Albert Nichter
Edward Donnenwirth
Charles Schild
Marjorie Donnenwirth
Cora E. Kreer
Ella Wagner
Nellie J. Kittinger
Mary Williams
Nettie Brown
Olive Schillinger
Caroline Leibenguth
Miriam D. Hoover
Louisa Bauman

CLASS OF 1900

Earl G. Mathie
Charles W. McLaughlin
Percy H. Harmon
Arthur McFarland
Wm. R. Myers
Lee A. Reinoehl
Dorothy N. Pocht
Bertha L. Buck
Goldie M. Blier
Carrie B. Kirk
Mabel C. Myers
Nora Murray
C. Elsie Houriet
Catherine Sorn
Kittie Wilson
Maggie A. Moke
Ethel M. Hardgrove
Rosetta A. Links

CLASS OF 1901

C. Albert Breece
Ralph R. Bevard
Jay N. Braucher
Curtis S. Kittinger
M. Curtis Miller
Berlin B. Weil
L. Roy Miller
Ervin Donnenwirth

Edith E. Schrader
Ada B. Becker
Charlotte E. Swigart
Bertha H. Blank
Laura B. Myers
Pearl R. Myers
Pearl E. Kittinger
Rosalie C. Mayet
Frances A. Steiner
Florence Keniray

CLASS OF 1902

Wm. N. LaViers
Oscar W. Whitmyre
Gertrude A. Brown
Florence M. Clemens
Edith D. Foltz
Clara M. Eippert
Alice L. Griffith
Amelia M. Hiser
Louisa M. Paul

CLASS OF 1903

Walter B. Anderson
Ivan H. Wenger
Harry Wagner
Henry W. Simmonds
Pearl M. Housman
Emma McLaughlin
Hazel L. Miller
Lottie Murray

CLASS OF 1904

Lewis M. Shafer
Ernest R. Wolf
Frank M. Eippert
Harry N. Myers
John F. Links
Lelia Maud Oberlin
Ruby Shilling
Lilly M. Sorn
Aimee Hoover
Grace M. Kittinger
Luella R. Leibenguth

CLASS OF 1905

William H. Links
Elmer Downing
Purcell L. Hammer
Carrie B. Rhoades
Nellie B. Moulton

CLASS OF 1906

Carrie M. Ginther
Esther M. Groff
Cora Blanche Myers

CLASS OF 1907

W. Arnold Blank
Mahlon A. Shafer
Edgar M. Kauffman
Harry E. Foltz
Edna Brown
Gertrude Clay
Eva Lucile Finefrock
Grace M. Labbe
Florence E. McGee
Edna E. Paul
Amanda J. Foltz
Frances M. Koehler
Lottie M. Stoner

CLASS OF 1908

Leo Brown
Floyd C. McLaughlin
William H. Sorn
Frank L. Oberlin
Gernard H. Bisker
John C. Koehler
Bessie Cameron Miller
Jennie S. Breck
Mabel E. Gettings

CLASS OF 1909

Ray O. Brinker
Ralph W. Pitz
Alvert A. Leininger
Dremond M. Sisler
Norma B. Smith
Abbie M. Krear
Zella Belle Groff
Mary C. Kurtz
Maud M. Moulton
Helen E. Labbe
Ila M. Miller
Maud Morrison

CLASS OF 1910

Clarence W. Brown
Arthur C. Blank
Arthur H. Foltz
Daniel Gaddis

Clyde F. McClintic
Russel A. Brand
James C. Leith
Helen Marian Miller
Mary M. Foltz
Vera A. Rhoades
Anna M. Otten
Ella Smith
Leda R. Brown
Belle Perskey

CLASS OF 1911

Donald Gordon Leith
Robert D. Fellmeth
James Lester Finefrock
James Henry McGee
Margaret M. Lehman
Hazel E. Kirk
Gladys D. Moyer
Jennie B. Shetler
Ruth Hilda Knight

CLASS OF 1912

Frank H. Bisker
Kenneth R. Hoffman
John A. Jones
Leo E. Koehler
Jacob A. Persky
Oakley M. Shafer
Frank J. Sours
Mabelle E. Clay
Barbara E. Griffith
Hazel Hauxwell
Esther E. Kurtz
Ethna M. Miller
Ora F. Miller
Vera Miller
Mary C. Vanderhoof

CLASS OF 1913

Ralph J. Blank
D. L. Huffman
Edward C. Labbe
Russel P. Ginther
Ray F. Hiser
Herbert Swigart
Clyde H. Butler
Claude H. Fashbaugh
Arnold C. Fisher
Archie R. Brinker
Andrew Duncan Miller
Russell J. Oberlin
John R. Sisler
Howard Stoner
Hazel Dell Foltz
Helen M. Miller
Anna Morrow
Marie Smith
Jennie E. Noot
Cora N. Putt

CLASS OF 1914

Virgil V. Braucher
Russell H. Rudy
Ralph D. Shook
Paul R. Swigart
Charles A. McLaughlin
Glennard Weil
Weldon Willgohs
J. V. Dugan
Grace M. Anderson
Florence Brand
Vera M. Finefrock
Carrie Leininger
Katy W. Otten
Esther Presky
Kathryn M. Shafer
Velma B. Braucher
Alice E. Clay
Sarah J. LaViers

CLASS OF 1915

Roy R. Baughman
F. Whitney Evans
Carl H. Koeler
Nathan A. Miller
Fred P. Miller
Howard J. Richter
Milron M. Rhoades
Perlee C. Rohrer
Carl L. Smith
Grace Lauretta Daily
Ethel Frances Marsh
Portia Charmane Marsh
Dorothy Alys Miller
Gladys Lurille Miller
Clara Edna Monroe
Mildred Grace Oberlin

CLASS OF 1916

Arnold J. Labbe
Charles W. McGee
Sidnew J. McGrew
Owen S. Rardon
Ellia M. Shembachler
Austin Liggett Vanderhoof
Edith E. Bauman
Edna B. Herron
Lois E. McGee
Worth C. Myers
Lydia F. Wittman

CLASS OF 1917

Pauline Steiner
Madeline Smith
Paul Fellmeth
Clifford Brown

CLASS OF 1918

Fannie McGee
Emma Baughman
Metta M. Miller
S. Irene Persky
Howard R. Finefrock
Nelson Koehler
Lowell B. Strey
Burton W. Lytle
Edwin J. Evans
Marline Lawrence
H. J. Carter
Charles G. Rhoades
Dewey Greenhoe

CLASS OF 1919

Paul Blank
Glenn Hellar
Leslie Simmons
Randall Kirtz
Nellie Botkins
Maurine Brown
Dorothy Fellmeth
Corine Moulton
Marian Rayl
Beulah Scott

CLASS OF 1920

Howard Evans
Reed Meckling
Lucile Hartz
Rue Ketter
Cary Kirk
Grace Kellar
Hazel Schallenberger
Florence Troytman

CLASS OF 1921

Wendell Finefrock
Oscar Kurtz
Hazel Davidson
Gwendolyn Woodworth
Eleanor Strey

CLASS OF 1922

Isabel Blank
Elizabeth Biller
Ursula Gill
Flucia Pilliez
Esther Fudge
Zenith Lawrence
Lillian Ruehling
Grace Stover
Grace Troyer
Porter Buck
Russell Humbert
Herman Fudge
Harry Kellar
Owen Housman
Welden Moke
Whitney Weil
Marion Dewalt

CLASS OF 1923

Dorothy C. Franz
Anna McGee
Gertrude Ruehling
Zelma Whitman
Stanley Fudge
Ralph Heppert

CLASS OF 1924

Margaret Albright
Florence Geier
Jessie Packer
Isabelle Rayl
Mary Schembechler
Ethyl Troyer
Cary Wagner
Preston Lawrence
Thirl Lawrence
Carl Suderow
LaVerne Strey
Donald Simmons

CLASS OF 1925

Gladys Burget
Dorothy Finefrock
Lorraine Frederick
Lois Gerth
Dorothy Greenhoe
Gertrude Hammer
Margaret Jackson
Margaret Overdear
Mary Paffle
May Reichenbach
Evelyn Simmons
Dorothy Stockert

Vera Tritt
Lois Young
Alma Schalmo
Catherine Steiber
Robert Albright
Wilbur Biller
Harrison Foust
George Fudge
Roy Geis
John Gill
Edwin Guess
Lawrence Hall
Nevin Jones
Harold Kurtz
Howard Mayer
Maurice Mitchell
Mac Shilling
Arden Surbey
John Storie
George Geier

CLASS OF 1926

Lavenda Baughman
Alma Beougher
Treva Eicher
Dorothy Johnson
Florine Kurtz
Helen Packard
Inez Philpot
Lillian McGee
Alma Bauman
Wilbur Bauman
Ralph Burget
Robert Evans
Calvin Franklin
Edwin Oser
Leona Williams

CLASS OF 1927

Helen Arntz
Bessie Burget
Sadie Diller
Garnet Doxsee
Grace Fletcher
Thelma Geier
Dorothy Hellar
Dorothy McGee
Hazel Whitman
Chester Hunold
Lester Daily
Virgil Etling
Marvia Greenhoe
Walter Wagner
Eugene Young

CLASS OF 1928

Elizabeth Kurtz
Mary Willmott
Lillian Shilling
Deltha Fishnick
Karl Shook
Carey M. Gordon
John Stitz
Edwin Bauman
Henry Ruehling
Glenn Ripley
William Evans
Richard Fellmeth
David Baughman
Orold Seifert
Ethel Yager

CLASS OF 1929

Wilma Bauman
Harriet Jones
Ruth Troyer
Camilla Youngblood
Hermine Hessesence
Lois Mathie
Allean West
Richard Lerch
Louis Wagner
William Wagner
Ralph Packer
John Kick
William Oser
Ronald Renninger
Vincent Stitz
Robert Moke
Oscar Calome

CLASS OF 1930

Esther Dye
Elizabeth Hessesence
Geraldine Reichenbach
Norma Frake
Ruth Hessesence
Catherine Suderow
Grace Hall
Marie Krutky
Sylvia Williams
Paul Harget
Cloyd Lawrence
Robert Ketter
Raymond Oser

CLASS OF 1931

John Smith
Louise Buchman
Mildred DeWalt
Mary Kiplinger
Emily Mathie
Irene Roby
Hazel Gill
Ruth Guess
Mabelle Johnson
Edith Troyer
Geynell Lusk

Helen V. Donnenwirth
Dorthea Dunn
Mamie Reichenbach
Harold Shetler
Delmar Culp
Earl Luthie
Harry Meibert
Harry Williams
Paul Ellis
Lester Etling
Paul Young
Wilbur Fellmeth

CLASS OF 1932

Pearl E. Cormany
Louis M. Everhart
Helen M. Franklin
Ruth C. Haag
Margaret Kick
Violet B. Kellet
Marie C. Nichter
Leone Reinoehl
Catherine Sanders
Marie A. Stitz
Daniel D. Carmany
Delmar M. Finefrock
Perlee O. Franz
James A. Gabor
Fred A. Gill
Wayne Greene
George K. Hoover
Peter M. Hessesence
Roger Ketter
Raymond King
Keith Lawrence
Harold R. Lewis
Alfred Mansfield
William E. McFarland
Richard G. Reighart
Paul E. Seifert
Joseph W. Seifert
Lewis M. Stitz
Paul F. Stitz
Donald P. Swope
Lester E. Yager
Melvin A. Youngblood
Walter E. Gesaman

CLASS OF 1933

Cecil Rardon
Lloyd Shaffer
John Henning
Mary Moke
Paul Ripley
Marie Smith
George Schuman
Florence Kulp
James Finefrock
Nina Dunn
George Wentsch
Irene Clapper
Dorothy Clapper
Boyd Donaldson
Harry Dye
Evelyn Reichenbaugh
John George
Helen Hall
William Fishnick
Grace Adams
Willard Jackman
Josephine Krutky
Harry Hall
Rita Sibila
Harold Hartel
Cleo Stump
Charles Toth
Lillian Drew
Delmar Jones
Helen Wittman
Karl Youngblood
Delores Schalmo
Ruth Poetter

CLASS OF 1934

Robert Arntz
Catherine Baughman
Lela Bean
Herman Beougher
Cathryn Blanchard
Helen Bredenber
Esther Calame
John Carmany
Mary Colopy
Margaret Dickerhoof
Bernard Drew
William Evans
Hilda Eicher
William Finefrock
Donald Hoover
Gordan Jones
John Stenger
George Gaber
Charles Gadd
Helen Gainey
Blanche Galloway
Roy Galloway
Helen Gozdan
Vivian Greene
Herbert Klever
Paul Kolesar
Eugene Lerch
Park Lewis
William Myers
Marjorie Matson

Ralph Nettle
Maxine Reighart
Raymond Rohr
Alvin Ruehling
Robert Shetler
Eugene Sliger
Vincent Stephan
Edward Troyer
Ruth Wertz
Vivian Williams
Gerald Yager
William Yant
Gerald West
Wilma Wentsch
Joseph Willmott
Val Yant
Olivia Youngblood
Melba Hartel
Avanell Henning

CLASS OF 1935

Beatrice Arman
Raymond Baughman
Richard Bauman
Florence Beougher
Vernel Baird
Louis Colopy
Phyllis Denison
Donald DeWalt
Toma Ellis
William Felliez
Richard Franz
Thelma Gadd
Paul Gill

Edna Ginther
Thomas Griffith
Sidney Hampshire
Donald Hare
Lloyd Hatt
Jeanette Jones
Russell Luthie
Robert Kellar
Marian Kemmpel
Harold Kiplinger
Richard Kaser
Angeline Marthy
Miriam Miller
Wilma Rohr
Lewis Sisler
Mary Scoville
Eleanor Seifert
Jeanette Sibila
Robert Stump
Mildred Schott
Thomas Stitz
Stella Seckman
Ted Willmott
Helen Wieman
Dorothy Wittman
Mildred Young
Paul Zabadah

CLASS OF 1936

Earl Baughman
John Baughman
Dick Eicher
Robert Fellmeth
Ralph Frase
Wilbur George
Walter Gesaman
Zane Gilcher
Emerson Gilmor
Elmer Gindlesberger
Steve Gozdan
Otis Hampshire
Ralph Harget
Dwight Hartel
Vernon Killinger
Stanley Mansfield
Clarence Palmer
Francis Rohr
Floyd Schalmo
Russell Semelesberger
George Simmons
Carson Sisler
Glen Sliger
Adrian Trachsel
Joseph Zabadah
Ronald Wittman
Hazel Bosley
Pearl Britton
Ruth Chovan
Madelyn Diehl
Thelma Dunn

Betty Geis
Anna Geiser
Edith Gerhart
Eva Gordon
Irene Kiffaber
Betty Kittinger
Rhea Jane Kull
Betty Jane Lewis
Betty Miller
Marie Netling
Eva Oser
Mary Ott
Annabelle Reighart
Fannie Rohler
Leona Schott
Matilda Sedar
Evelyn Sorn
Margaret Stump
Louise Suderow
Mary Suderow

Dora Wolfe

CLASS OF 1937

Helen Blanchard
James Gilmor
Irene Laughlin
Robert Baughman
Margaret Carver
Herman Buie
Lillian Dahler
John Drew
Ethel Forrer
Jay Felix
Catherine Fellmeth
Lois Fuller
Harry Harget
Dorothy Harbaugh
Raymond Johnson
Earl Stoughton
Vernon Williams
Ferne Hartel
Roy Johnson
Telford Killinger
Amy Hessesence
William Krutky
Pauline Kostelnick
Donald Lerch
Betty Martin
Richard Myers
Elizabeth King
Cornelius McGrew
Marilyn Lerch
Ralph Miller
Irene Masgrove
Mary Ellen Mathie
Glenn Oser
Ola Rehm
Michael Penzenik
Vernon Renninger
Mary Stenger
Glenn Rohler
Evelyn Wieman
Emil Seifert
Jane Swisher
Bernice Wolfe
Harold Smith
Jean Youngblood
Charles Smith
William Shook
Newton Carmany

CLASS OF 1938

Florence Arntz
Richard Burwell
Betty Burzlafl
Edward Campbell
Robert Clay
Gertrude Danko
Ford Dickerhoof
Evelyn Doxsee
Earl Dunn
Mike Durinsky
Nell Finefrock
Geneva Fletcher
Edith Gesaman
Irene Hatt
Alan Hobbs
Wellington Ketler
Chester Kieffaber
Gladys Kiplinger
Zorka Markovich
Dale McClellan
Ward Miller
Paul Oser
Audrey Reichenbach
Delbert Rohr
Floyd Sawyer
Verla Schalmo
Chester Schellenger
Pauline Schott
Lorin Schultz
Delores Sibila
Margaret Simmons
Mary Simon
Lloyd Smith
Pauline Stenger
Forest Stump, Jr.
Robert Swigart
Betty Williams
Mary Williams
Ann Zabadah

CLASS OF 1939

Francis Arman
Louise Bruegger
John Clay
Mary Dunn
Roy Dunn
Harry Eicher
Doris Elsner
Betty Etling
William Fellmeth, Jr.
Robert Fischnich
Raymond Fisher
Robert Fisher
Maxine Galloway
Russell Geiser
Ruth Gill
Robert Hanks
Gerald Hoeft
Merle Jackson
Evelyn Kaser

Sarah Koppes
Dean Kull
Mildred Martin
Dolores Miller
Lillias Miller
Faye Ott
Donald Potter
William Potter
Elizabeth Reid
Thaires Schwendiman
Anna Sedar
Jean Sisler
Ruth Smith
Margaret Stenger
Joe Stitz
Mary Suchka
Madeline Vaughn
Violet Weller
Ada White
Earl Wolfe

CLASS OF 1940

Harry Baab
John Blank
Buryl Bloomfield
Jack Boyd
Hazel Buie
Marjorie Burwell
Roger Cassidy
Arwood Dickerhoof
Carl Drew
James Dugan
Glenn Ellis
Dorothy Fisher
Hilda Gainey
Jeanne Gascoyne
Dorothy Getz
Mabel Gibbs
William Gibbs
Harriet Gilcher
Joseph Gozdon
Irene Graham
Robert Hansel
Roland Hansel
Ilo Harbaugh
Minnetta Hessedence
Germaine Klein
Clarence Kobie
Ralph Laughlin
Jack Lehman
Mary Lewis
Michael Markovich
Wesley Morrison
Ruth Oser
Elsie Peyton
Russell Rafeld
Glenn Rhoades
Jack Roach

Harold Rohr
Richard Shetler
Robert Shook
Edward Vaughn

CLASS OF 1941

Hyla Athey
Jeanne Baab
Avalyn Bodkin
Vernon Bolgrin
Constance Butler
Alice Carmany
Dale Carmany
Robert Carmany
Sylvia Cormany
Richard Dittmer
Ruth Donnenwirth
Jack Dugan
Ila Dunn
Evelyn Gainey
Doris Gaudaur
Pauline Greene
Alice Harget
Evelyn Head
Francis Hill
Ward Hitchcock
John Holly
Richard Jenkins
Vernon Johnson
Junior Ketter
Russell Ketter
Noel Ketter
Harriet Kittinger
Anna Klein
John Knoch
Ralph Kracker
Lewis Kull
Clifford Lindsay
John Maxhimer
Herbert Miller
Lewis Miller
Raymond Nichter
Faye Reighart
Don Ringley
Charles Rhodes
Alma Rohr
Elsie Sawyer
Robert Sibila
John Sisler
Duane Stanford
Anton Stenger
Norma Stephan
Edwin Suderow
Robert White

CLASS OF 1942

Dorothy Arman
Curt Bedlion

Eva Biblis
Melvin Boyd
Ruth Brenner
Dowell Cross
Naomi Dittmer
Gene Fellmeth
Ruth Hallett
Hilda Hahn
Dorothy Hansel
Gale Hartel
George Higginbotham
Galen Hostetler
Mildred Kiplinger
Edwin Kobie
Beatrice Koppes
Twila Lehman
James Lerch
Joseph McCabe
Robert Nettle
Patricia Parker
Hazel Pitz
Margaret Rohler
Thomas Rohr
Vernon Rohr
Lois Schwendiman
Eva Senff
Garnet Shoemaker
Alvin Simmons
Robert Stephan
Michael Suchka
Don Swigart
Connie Swisher
Don Vaughn

CLASS OF 1943

Clifford Bachtel
Martha Barthlow
Emily Bedlion
Jeanette Burwell
Jay Butler
Myrtle Cormany
Adolin Cottrell
Madolin Cottrell
George Dittmer
Junior Everhart
Robert Foxx
Betty Geiger
Euna Gindlesberger
Dorothy Hartong
Marion Heppert
Douglas Holly
Helen Johnson
Robert Johnson
Betty Klein
Eva Klein
Rebecca Kull
Jessie Lepley
Edith Levers

Henry Lindsay
Henry Meglich
Robert Miller
Harry Myers
Alice Netling
Jean Reiter
Don Rohr
Merle Rohr
Virginia Rose
Robert Martin
Jim Maxhimer
William Sibila
Ruth Sliger
Richard Stephan
Mary Stoner
Harold Wagner
William White
Olive Williams
Lois Wuchter

CLASS OF 1944

Lawrence Arman
Anne Babick
Darrel Cogan
Jean Fletcher
Eldus Fox
Helen Fricke
Audrey Gaudaur
Delores Geiser
Ruth Gibbs
Dorothy Gill
Betty Hill
Betty Hiltbrand
Roy Hostetler
Loah Lautenschlager
Delores Lindsay
Iris Long
Cecelia Paulus
Verla Rohr
Jean Rose
June Rose
Ralph Scheetz
Stella Schroeder
Ruth Shoemaker
Thelma Shoemaker
Dorothy Shook
Lloyd Shull
John Stutz
Frank Stump
Anna Suchka
Richard Swigart
Earl Wood
James Youngblood

CLASS OF 1945

Betty Barthlow
Shirley Burwell
Betty Crowe

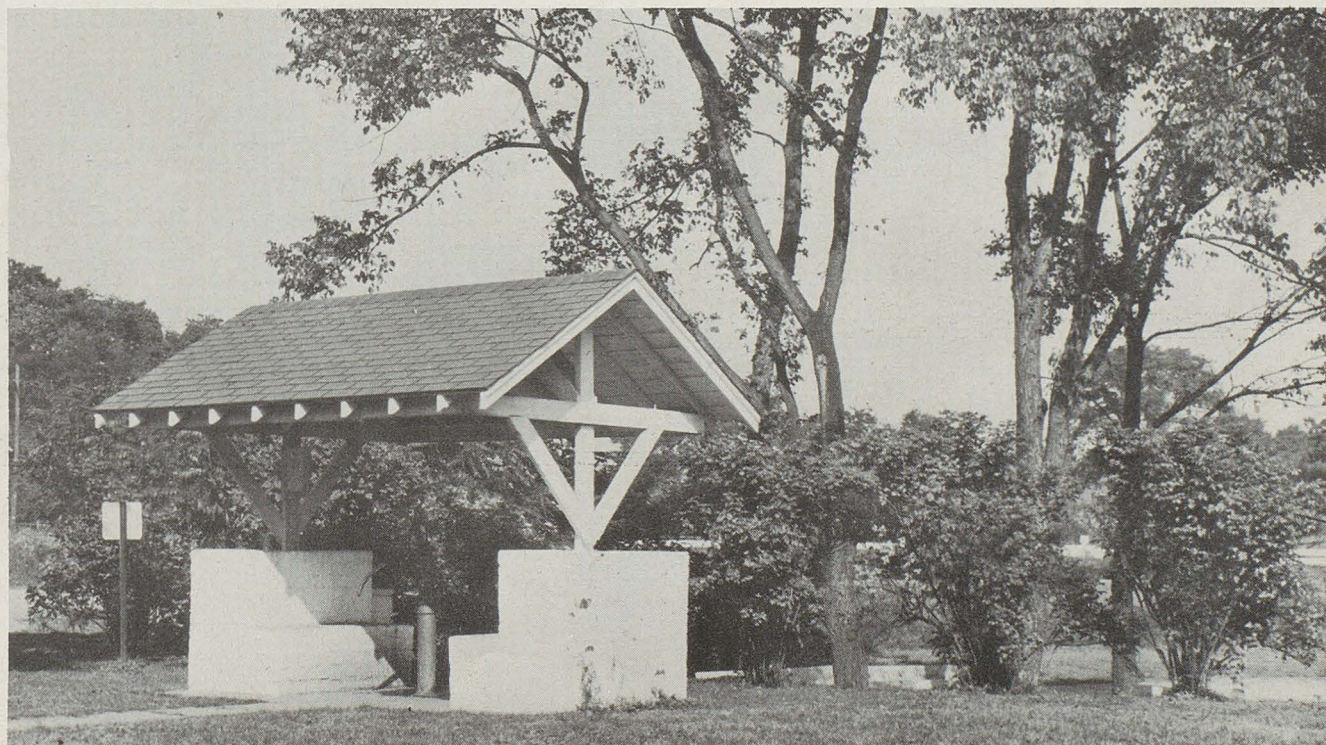
Keith Gainey
Marvin Gordon
Virginia Hansel
Dale Hardgrove
Thais King
Flo Kurtz
Ellen Lautzenhiser
Viola Lohr
Robert Martin
Jim Maxhimer
Harriet McArdle
Joseph McArdle
William Miller
Robert Neidert
John Parker
Robert Powell
Mildred Roby
Rosella Rohr
Jean Selch
Ethel Shook
Lois Sibila
Gertrude Sickman
Gene Suderow
Ann Sullivan
Dora Wagner
Oran Wagner
Monica Youngblood
Richard Zabadah

CLASS OF 1946

Betty Albricht
Alfred Barber
Terry Bremkamp
Rita Bruegger
Evelyn Brumitt
Leo Buchtel
Lorna Mae Butler
Clarence Dittmer, Jr.
John Foxx
Clifford Gaudaur
Frank Gindlesberger
June Hatfield
Evelyn Hessedence
Dolly Hill
Mary Hiltbrand
Robert Kittinger
Helen Lindsay
Frank Lockhart
Nedra Long
Donald Pitz
Robert Ries
Glenn Rohr
George Suchka
Betty Sullivan
Leora Hunter
Robert Lohr
Harold Mangold

CLASS OF 1947

Stanley Suderow
Clara Wagner
Alice Schwartz
Wanda Smith
Helen Martin
Grace Lyons
Mary Belasco
Lucille Long
Sally Schroeder
Sam Pavkov
Carol Baab
Laurabelle Mays
Helen Kiko
Robert Paulus
Warren Ryder
Doris Greenawalt
James Duncan
Maurine Brumitt
Rita Boak
Patti Bauman
Jo Ellen Aronhalt
Leonard Dittmer
Paul Rhoades
David Stanford
Alice Sibila
Patty Gill
Barbara Miller
Byron Kohn
Joanne Hahn
Barbara Youngblood
Arthur Norris, Jr.
James Kurtz
Phyllis Kobie
James Lehman
Mary Boak
Carl Huddleston
William Demharter
Edna Sickman
James Schwendiman
Thomas Humble
Charles Noel
George Grubb
Ted Hardgrove
Charles Stump



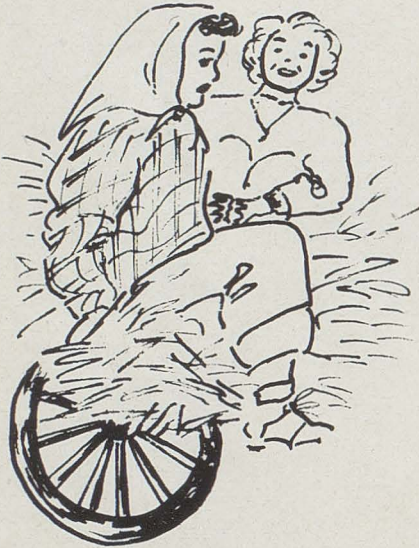


1947-1948



SEPTEMBER

- 2— Annual appearance of our Band at Stark County Fair.
- 3— First full day of school.
- 5— Election of Senior Officers.
- 6— Football Preview at Tiger Stadium.
- 12— Rittman game there — lost 31-6.
- 18— Annual picture taking gets underway.
- 19— Brewster game. We 0 — They 0.
- 25— Seniors publish first Booster Club paper. Y-Teens Style Show and what styles!!
- 26— No school, Teachers Meeting at Reedurban. Band plays for teachers.
- 27— Barberton Reserves beaten by Indians 27-20.
- 29— Did you notice those flashy black and white sweaters the Juniors are wearing, they must be new!



OCTOBER

- 3— Hartville 0 — Fulton 54.
- 4— P. T. A. presents Public Auction in auditorium.
- 7— Y-Teens Hayride for all girls of the school.
- 8— Rev. Fudge gives first assembly of the year.
- 10— East Canton game a defeat for the Indians (26-12).
- 12— Band went to Cleveland to put on a half time drill for the Los Angeles Don's and Cleveland Brown's football game.
- 17— Indians travel to Kent State and were routed 27-7. End of first six weeks. (Red letter day for quite a few.)
- 21— Seniors get their pictures taken.
- 23— Night before the Indians meet the Polar Bears so come out for the snake dance and pep rally. Y-Teens Weiner Roast with guest speaker, Miss Skinner, from Cleveland.
- 24— Jackson game, lost 12-0. This marks the day of the Homecoming. (Did you notice the Queen and her Attendants????)
- 30— Navarre game, Indians lost 33-12.
- 31— No school, Teachers Meeting at Cleveland.



NOVEMBER

- 7— Last home game, the Middlebranch Diamonds, defeated the Indians 6-7.
- 11— Armistice Day — no school.
- 12— Hi-Y Representative presents assembly to student body.
- 14— Seniors give party in honor of the Freshmen.
- 19— Jackson Alumni vs Fulton Alumni, we lost 18-0.
- 25— Juniors present play, "Don't Take My Penny." Great success!

DECEMBER

- 2— First home Basketball game, Orrville. Lost 29-27. (Poor beginning often means a good ending.)
- 4— First Band Concert of the year.
- 5— Indians' gain, Brewster's loss, score 22-18.
- 6— Jackson 39, Fulton 37.
- 8— The P. O. D. Class visits the Ohio State Penitentiary at Columbus.
- 12— Indians take gleam out of Middlebranch, 47-36.

CALENDAR

DECEMBER

- 13 — Northeast District Band Clinic, our Band played Concert. Dundee game won by a score of 23-33.
- 15 — Y-Teens Spaghetti Supper and Christmas exchange.
- 19 — School out for Christmas vacation. School begins again on Jan. 5.
- 20 — Beach City game, won 24-39.

JANUARY

- 3 — Y-Teens Semi-formal Snow Ball.
- 7 — Assembly by Rev. Barthlow.
- 9 — Uniontown game, we won 60-20.
- 10 — Waynesburg game, the Indians won 35-28.
- 13 — Dalton here. Won 60-45.
- 15-16 — First Semester Exams.
- 17 — St. Joseph at Dover. Indians won 65-52.
- 23 — Navarre game here, we won 70-50.
- 24 — Indians travel to Hartville, we won 57-34.
- 30 — Fulton, plays Greentown on our home floor, 64-46.
- 31 — Indians travel to East Sparta, we won 57-43.

FEBRUARY

- 6 — Senior Scholarship tests. East Canton game here, we won 35-34.
- 7 — Marlboro here, we won 47-33.
- 10 — February Band Concert.
- 14 — Delroy here, we won 65-39.
- 17 — Y-Teen Poppy-Daughter Banquet.

MARCH

- 2 — Senior Play — "Dora Dean".
- 4 — Literary Contest.
- 6 — Stark County Solo and Ensemble Contest.
- 20 — Northeast District Solo and Ensemble Contest at Baldwin-Wallace College.
- 26 — Good Friday — No school.
- 29 — No school — Easter recess.

APRIL

- 6 — Spring Band Concert.
- 10 — State Finals in Solo and Ensembles at Ohio State University.
- 17 — Stark County Band Clinic.
- 23-24 — Northeast District Band Contest at Kent State University.

MAY

- 1 — Grade School Music Contest at McDonald High School.
 - 8 — State Finals in Band at Ohio State.
 - 13 — May Concert.
 - 15 — Junior and Senior Prom.
 - 23 — Baccalaureate.
 - 27 — Commencement.
- OUR MOTTO — "The Door to Success is Labeled Push."





CANAL FULTON GRADE SCHOOL

GRADE FACULTY



VIRGIL M. SUMMERS
Principal



HERMAN J. BACH



CORA B. CARR



GRACE E. FINEFROCK



VIRGINIA KEEFER



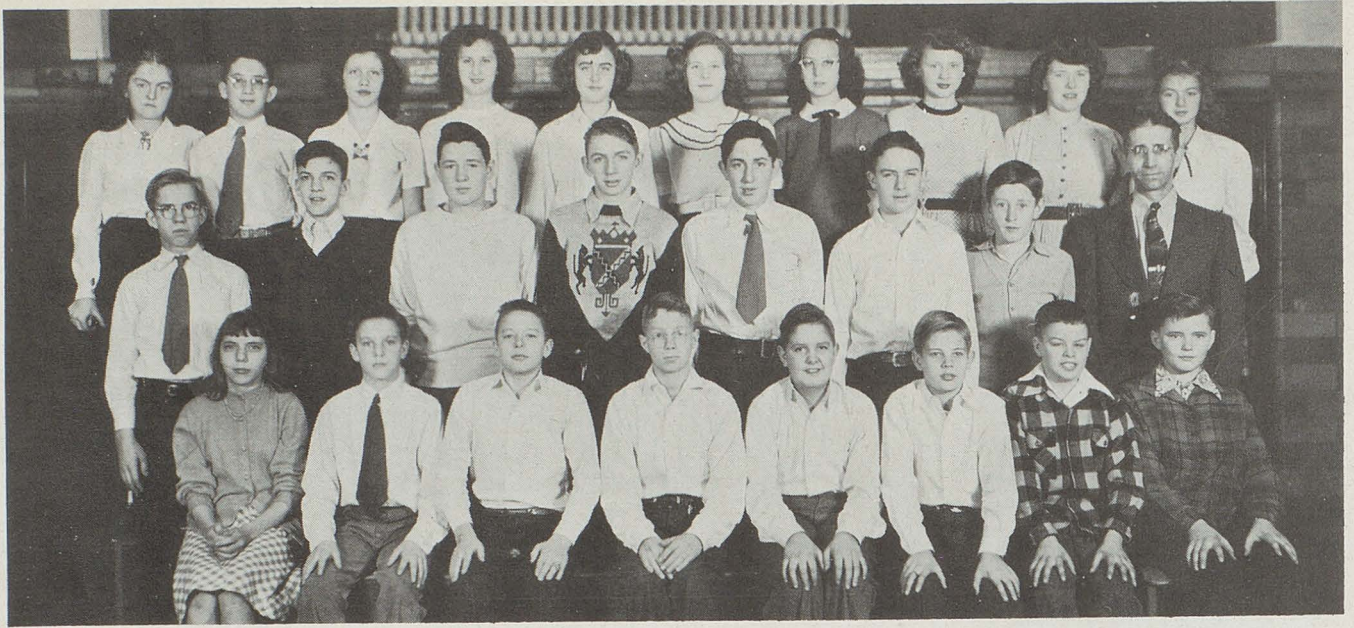
DOROTHY M. SUMMERS



PAULINE V. WEIGLE



ETHEL M. KNIGHT



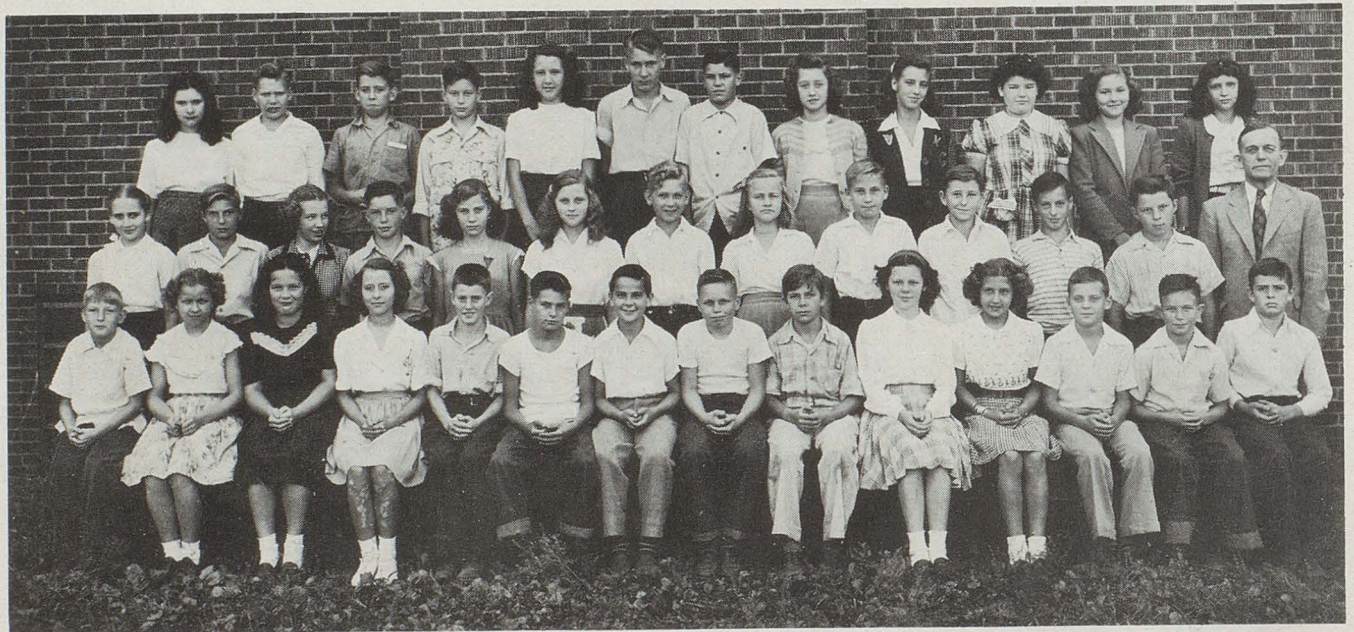
EIGHTH GRADE

First Row: Gloria Schwartz, Donald Sullivan, Roy Ellis, Edward Moore, James Fox, William Greene, Robert Schafer, James Smith.

Second Row: Jerry Cuthbert, Kenneth Boyer, Orval Parker, Clyde Lyons, Larry Oschenbein, Glen Swigart, Kenneth Decker, Mr. Summers.

Third Row: Donna Perry, Larry Douglas, Patsy Foxx, Marjorie Neidert, Bonnie Long, Janet Hill, Verna Budick, Lois Hadley, Esther Twaddle, Shirley Fudge.

Absent: Coyla Hann, Dawn Swisher, Barbara White, Carol Bauman.



SEVENTH GRADE

First Row: Clifford Smith, Doris Dye, Shirley Shoemaker, Shirley Hiltbrand, Lester Decker, William Lorenz, Robert Flake, Harold Ott, Edward Norris, Anne Gainey, Barbara Weaver, Wayne Douglas, Richard Reffner, Richard Hartman.

Second Row: Mary Lyons, William Fricke, Lorene DeWalt, Glenn Reichenbach, Mary Straw, Shirley Rudersmith, Gary Williams, Connie Long, Raymond Webber, Alvin Notch, Byron Aughenbach, Shirloc Rudersmith, H. J. Bach.

Third Row: Janet Hammock, Robert Knotts, Richard Rodgers, Jimmy Neidert, Eva Moore, Jerry Bogard, Richard Harbaugh, Barbara Nichols, Norma Gerstenslager, Martha Knapp, Betty Straharsky, Cleda Bruegger.

Compliments of McMillen Hardware



SIXTH GRADE

First Row: Karl Gilcher, Gertrude Kerstetter, Lee Hammock, Paul Shonk, Marvon Sullivan, Haley Perry, Duane DeWalt, Richard Compeau, Richard Fischnich, Robert Duncan.

Second Row: Genelea Fox, Fern Straw, Mary Ann Schroeder, Lois Cormany, Darlene Croft, James Ebert, Jess Williams, Ronald Leaver, Patty Lou Taylor, Mrs. Carr.

Third Row: Teddy Jolliff, Patty Boyd, Marilyn Evans, Janet Miller, Patsy Ulrich, Mary Bogard, Glen Mauger, Mary Jo Greene, Paul Stockert, Edward Dickerhoof.



FIFTH GRADE

First Row: Charlotte Bennage, Betty Ries, Frank Shoemaker, Ruth Anne Fricke, Barbara Crowe, Barbara Hague, Evelyn Croft, Clifton Smith, Linda Lee Gesaman, Gearold Gerstenslager, Mary Lou Gaddis, Thomas Fox.

Second Row: Donald Douglas, Patricia May, William Stockert, Jo Anne Swisher, Ronald McClay, Calvin Franklin, James Reffner, Eleanor Thompson, Ronald Boyer, John Weaver, Mrs. Finefrock.

Third Row — Shirley Ludwick, Susan Hann, Joyce Kraft, Nicholas Notch, Ralph Moore, Robert Bergdorf, Russell Mitchell, Marvin Hardgrove, Melvin Mansfield, Joan Gesaman, Charles Keefauver.

Absent: Betty Jo Miller, Margaret Weber, Marilyn Simon.

Compliments of Kendall Barber Shop



FOURTH GRADE

First Row: Alberta Ott, Sandra Moore, Judith Herkes, Shirley Gesaman, James Hiltbrand, Carol Miller, Floyd Kirkpatrick, Marlene Greene, Beverly Barber, Roberta Gay, Joan Nelson, Nancy Dye.

Second Row: Doris DeWalt, Jerry Nicholas, Betty Rodgers, Gary Matthews, Barbara Zimmerman, Dorcas Ochsenein, George Reffner, Gerald Semelsberger, Ann McMillen, David Duncan, Miss Keefer.

Third Row: George Temple, Esther Hann, Ronald Huffman, Ruth Bogard, Roger Fricke, Robert Rodgers, Marlene Knapp, Thomas Garrett, Harlan Weygandt, Davis Krnach.



THIRD GRADE

First Row: Henry Bergdorf, Ada Jean Bauman, Albert Cooley, Arthur Mann, Elizabeth Siber, Thomas Reighart, Jackie Shonk, John Smith, Carmen Reffner, Edward Grocott, Richard Gindlesberger, Junior Weber, Virginia Fox.

Second Row: George Bennage, Richard Stoughton, Sue Ann Cuthbert, Dennis Johnson, Rosella Hartman, Carol Otto, Terry Kroeger, Dale Ferryman, Judith Fudge, Sandra Neal, Sharon Gilcher, Robert Mansfield, Mrs. Summers.

Third Row: Richard Norris, James Selch, Robert Blackly, John Gesaman, Lois Stockert, Lois Hoover, Billy Layton, Robert Gindlesberger, Donald Ketler, Ann Fletcher, Marie LaBerth, Mary Ann Decker, Bobby Byrd.

Absent: Richard Swisher. Entered later: Cecile Lint.



SECOND GRADE

First Row: Arthur Goerke, Carl Smith, Lowell Gesaman, Janet Cormany, Larry Notch, Herbert Blahly, Buddy Hartman, Donna Huffman, Gary Leaver, Joyce Ries, John Tippel, Miguel Guzman, Deloris Bennage, Roger Fox.

Second Row: Bill Mann, Robert Reifner, Kenneth Fricke, Ronald Ries, Carson Ripley, Richard Flake, Gerald Hammock, Randall Woodall, Carol Hubiak, Ruth Parker, Paul Knack, Patty Nelson, Jerry Duncan, Betty Williams.

Third Row: Glen Weber, Elaine Kerstetter, Carol Fellmeth, Tom Nicholas, Clifford Miller, Ronald Hague, Kenneth Sick, Judith Semelsberger, Judith Schwartz, Lyle Kirkpatrick, Robert Woodall, Harry Taylor, Judith Gesaman, Mrs. Pauline Weigle.



FIRST GRADE

First Row: Glenn Garrett, Raymond Ferryman, Karen Lee Ellis, Phyllis Baum, Sally Ann Westfall, Barbara McVicker, Richard Huffman, Richard Dye, Kenneth Waggoner, Rita Hann, Georgia Ann Ketler, Robert Garrett, Linda Lou Groft, Donald Miller.

Second Row: Linda Lee Finefrock, Billy Appleton Swigart, Linda Kay Ott, Tommy Otto, Jane Reid, Gordon Gay, Jacqueline Mae Little, David Hiller, Dorothy Parker, Carole Jaune Rupe, Linda Lucille Suderow, Tommy Norris, Jimmy Finefrock, Nyda Noftsinger.

Third Row: Donald Dale Decker, Clifford Mansfield, Sonny Knapp, Judith Lee Snyder, Larry Johnson, Wanda Lee Hoisteter, Margery Ann Eby, Marion Weygandt, Billy Greenawalt, Jerry Dickerhoff, Norman Tippel, Leslie Riblet, Richard Schmachtenberger, David Ray Nichols, Mrs. Knight.

Absent: Frederick Croft, Jennie Hancock, Judith Ann Mann.

Compliments of Dennison and Diehl



GRADE SCHOOL CHORUS

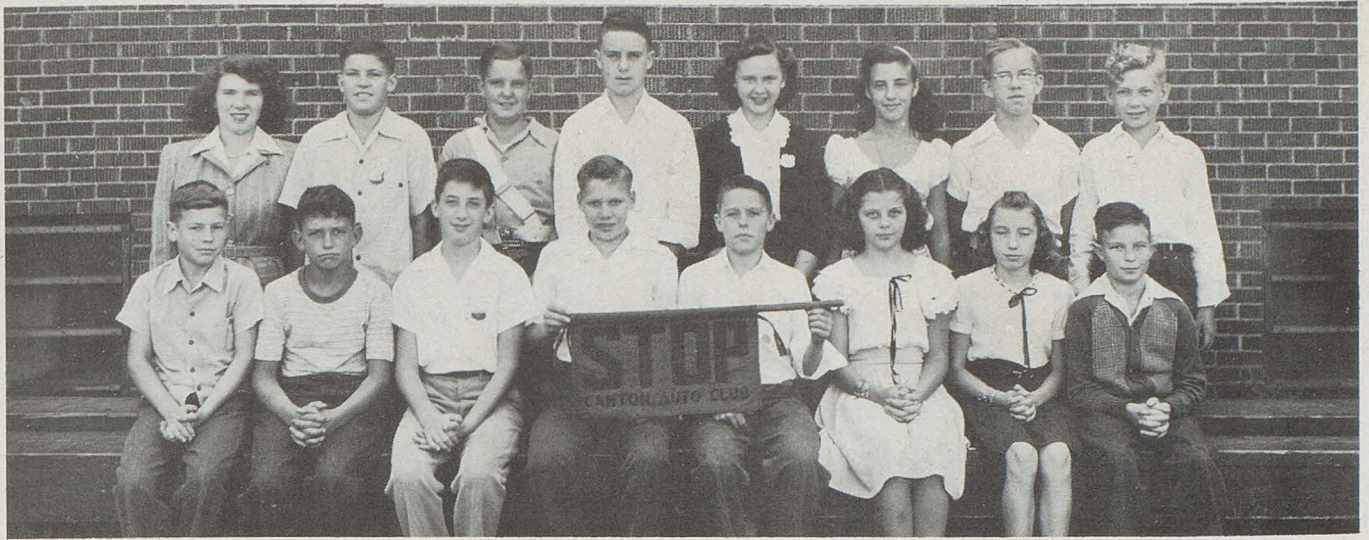


CADET BAND



CLARINET CLASS

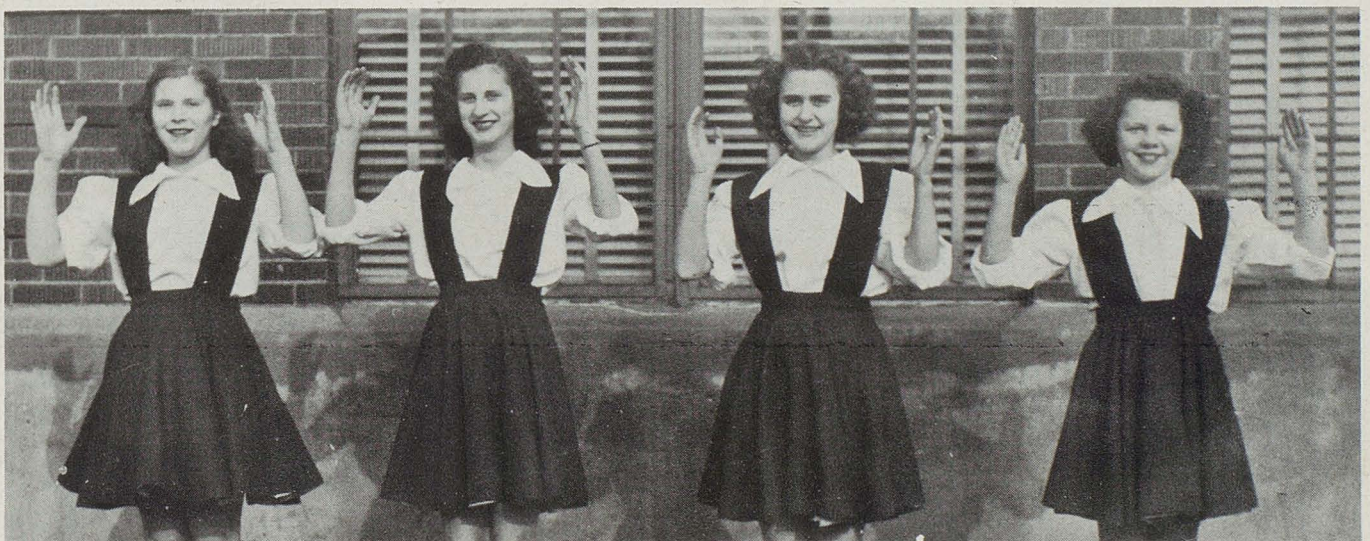
Compliments of Village Restaurant



JUNIOR POLICE

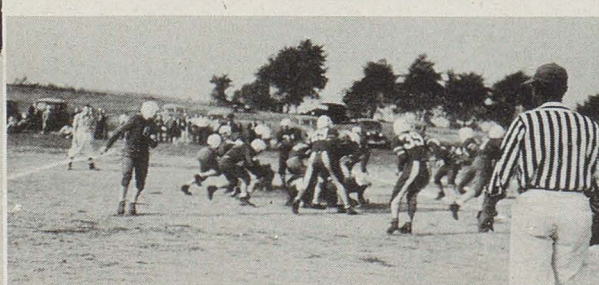
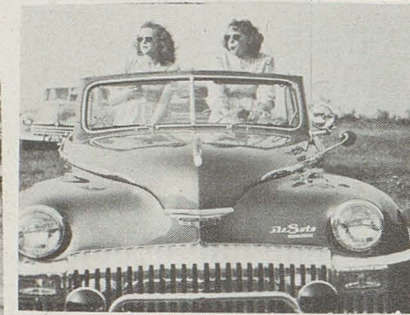
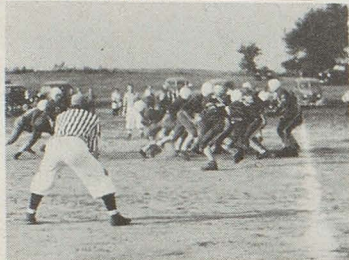
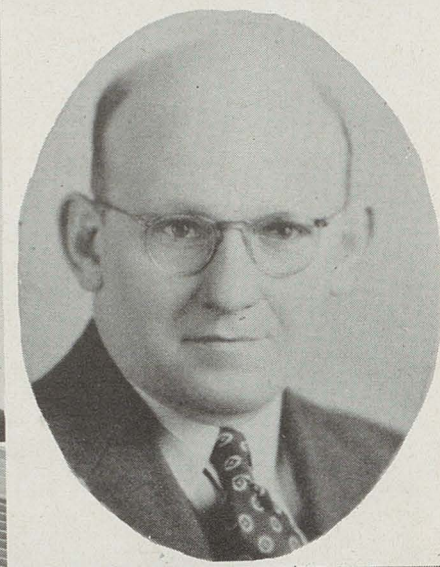
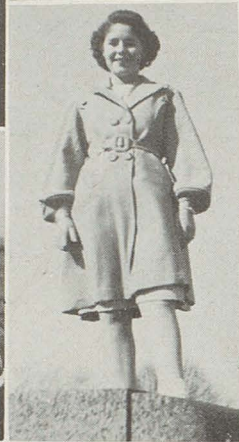
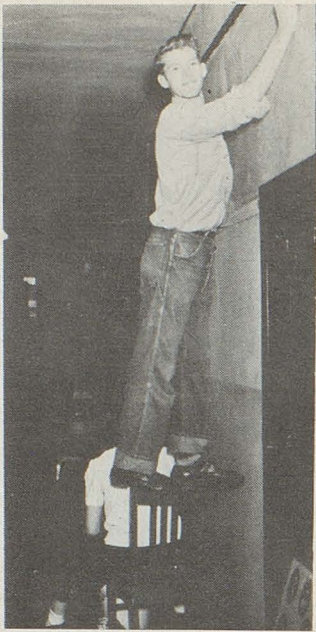


GRADE SCHOOL BASKETBALL TEAM



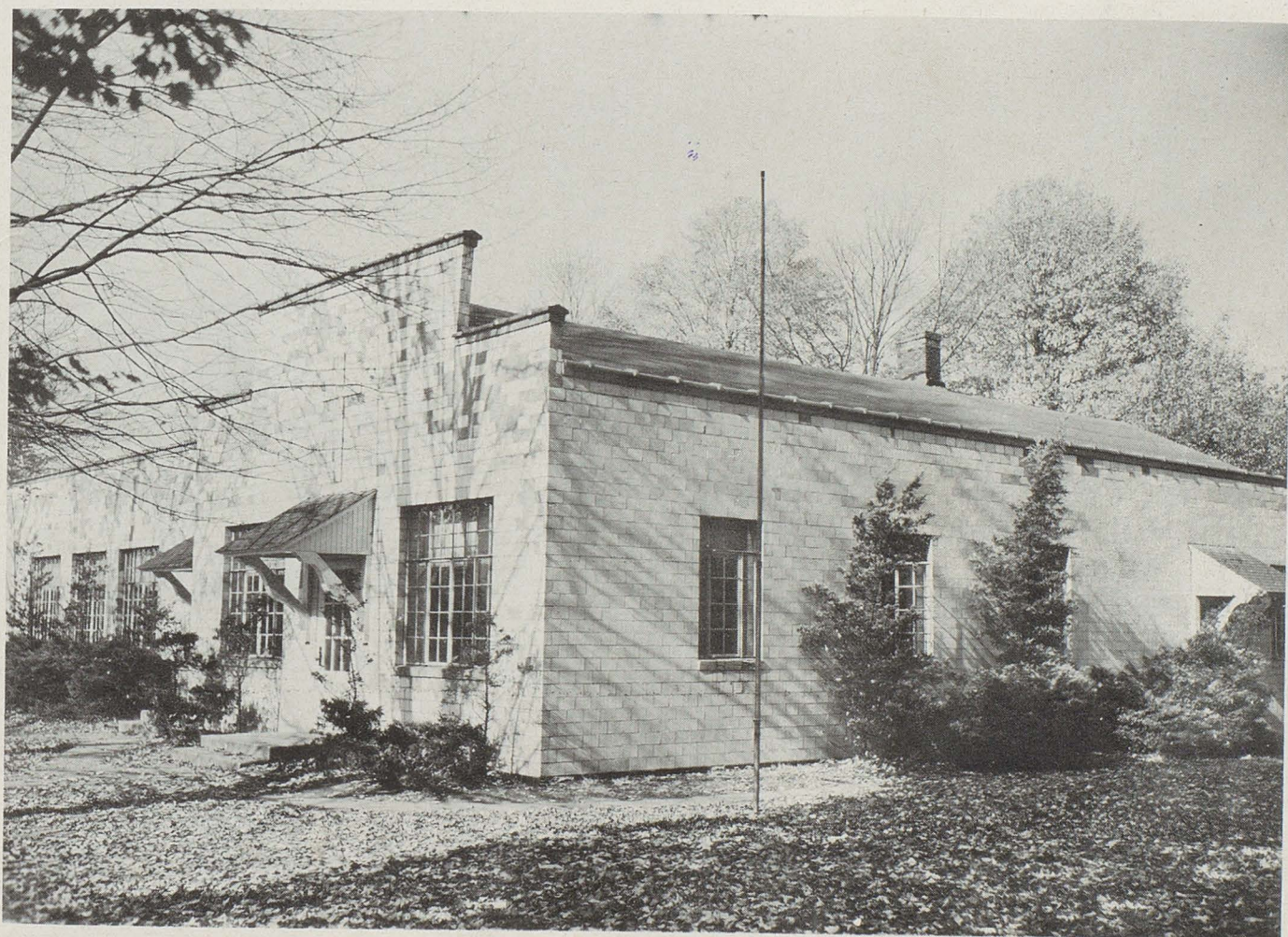
GRADE SCHOOL CHEERLEADERS

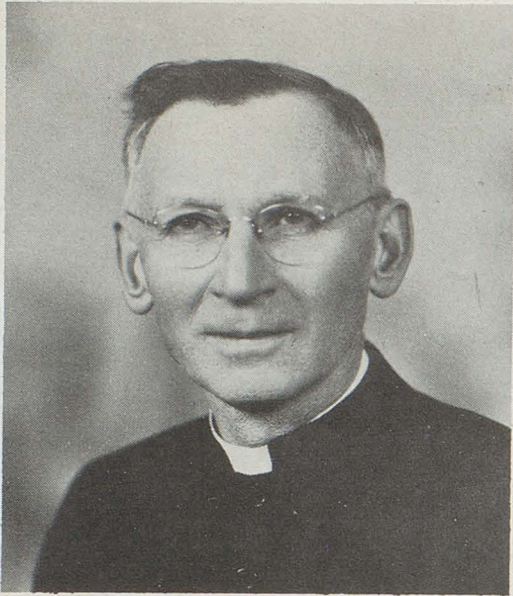
Compliments of the Century Bar



ST. PHILLIPS AND JAMES

PAROCHIAL SCHOOL





THE REVEREND FATHER MAURER

FACULTY

SISTER MARY LEONCIA
Grades 6, 7, and 8

SISTER MARY ST. JOAN
Grades 3, 4, and 5

SISTER MARY EWALDA
Grades 1 and 2



GRADES 6 - 7 - 8

First Row: Marvin Hunt, Richard Shafer, Mary Elizabeth Whisler, Mary Martin, Janet Gill, Joan Gallagher, Sally Hammer, Marilyn Ferdinand, John Hammer, Paul Ferdinand, James Rohr.

Second Row: Charles Brown, Herbert Seifert, Walter Gill, Bert Boak, James Stephen, James Gill, Paul Jastraub, Donald Davidson, Robert Williams, Lewis Etling, Jack Baumgartner.

Third Row: Larry Jastraub, Doris Steiner, Nancy Butzer, Margaret Glancy, Rosemarie Bremkamp, Janet Geier, Joan Jastraub, Janet Hardgrove, Rosemary McArdle, Jean Schembechler, Raymond Shiplett.



GRADES 3 - 4 - 5

First Row: Albertine Seifert, Lucille Boak, Norman Burns, George Baughman, Leonard Hunt, Nancy Paul, Donald Burns, David Ferdinand, Robert Shafer, Rita Bloomfield, Thomas Culp, Lauren Rohr, Joanne Appleman, Willa Mae Butzer.

Absent: Peggy Boak.

Second Row: Carol McAvineu, Robert McKenna, Robert Oser, Jack Yanke, Joanne Workman, Frances Arnold, Larry Byron, Albert Ott, Jerry McAvineu, Mary Jane Volk, Janet Heather, Leo Hammer, Benny Bloomfield, Dale Stephen, Rosemarie Ilg.

Third Row: Jack Juersivich, Walter Talalas, William Gardner, Robert Scheetz, Robert Kolar, Barbara Lee, Betty Gill, Rita Young, Nancy Stephan, Barbara Hunt, Jerry McDonald, Freddie Remark, Raymond Schembechler, Vincent Orr, John Shondel.



GRADES 1 - 2

First Row: Martha Blank, Louise Seifert, Doris Boak, Judy Burger, Jacqueline Germano, Ellen Ilg, Roseanne Oser, Betty Hunt, Larry Rohr, Gary Heather, Robert Gardner, James Stitz.

Second Row: Marlene Freed, Judy Heather, Charlotte Ott, Mary Beaver, Clarence Workman, Donald Young, Thomas Burger, Robert Gill, John Kohler, David Perkins.

Third Row: Joan Byron, Annette Schalmo, Marianne Kirk, June Volk, Irene Turnbaugh, Gretchen Geier, Gary Stephen, John Magyar, Joseph Magyar, Raymond Oser, Thomas McDonald.

Compliments of

DAVIS STUDIO

**Compliments of the following Massillon Business Firms
and Congratulations to the Class of '48**



A. & P. Super Market

Becker Hardware Co.

Blatz Shoe Store

Blaumeiser Hardware Co.

Brighten-Up Store, Inc.

Cope Bros.

C. J. Duncan

C. O. Finefrock Co.

The First National Bank
in Massillon

The First Savings & Loan Co.

M. O'Neil Co.

The Ideal Company

Jean Frocks, Inc.

Linde's

Pietzcher's, Inc.

McLain Grocery Co.

Massillon Hardware Co.

Massillon Retail Grocers &
Meat Dealers

Massillon Savings & Loan Co.

Meek-Segner Co.

Ohio-Merchants Trust Co.

J. C. Penney Co.

Peoples Federal Savings &
Loan Association

Reliable Office Supply Co.

Sears, Roebuck & Co.

Segel's

D. M. Siff Shoe Co.

Spuhler's, Inc.

State Bank Company

Stark Dry Goods Co.

Stuhldreher's Cigar Store

Workingman's Store

Compliments of

K A N N E R ' S

32 Lincoln Way E.



*Massillon's Leading
Men's Clothing Store*

BE MODERN!

Save Food

Save Time

Save Labor

ELECTRICALLY!



**The
OHIO PUBLIC SERVICE
Co.**

MASSILLON, OHIO

Compliments

of



**THE
COMMERCIAL PHOTOLITH
CO.**

137 First Street, N. E.
Massillon, Ohio

Stark Glass Co.

Glass Contractors

Stark County's Largest Distributor
of Large Mantle Mirrors



505 Erie Street N.

Phone 5697

MASSILLON, OHIO

Compliments of

William A. Wagner
HYBRID SEED CORN

Canal Fulton, Ohio

Compliments of

GILCHER LUMBER CO.

BOB SWIGART

Manager

Compliments of

HART'S
FROZEN FOOD LOCKER
and
GROCERY

Phone 2301

Compliments of

NEIDERT & SONS

Distributors of

JOHN-DEERE
FARMING IMPLEMENTS

Route 21

Phone 2577

Compliments of

**YALE
CLOTHES**

★

308 N. Market Canton, Ohio

ROY BLOOMFIELD
Manager

Compliments of

DeLuxe Dry Cleaning

55 FOREST AVE., S. E.

Downtown Store
42 North Erie

Phone 8404

MASSILLON, OHIO

**BEST WISHES
to the
CLASS
of
1948**

★

**THE
STERN AND MANN
COMPANY**

Compliments

of

GEORGE SCHROEDER

CONGRATULATIONS
to the Class
of 1948

BLOOMFIELD CHEVROLET

SOUTH CANAL STREET

Canal Fulton's Most Modern Auto Service

A—Always

B—Buy

C—Chevrolet

Compliments of

GRANT TOTTEN COMPANY

(Wholesale Only)

Everything for the Roofing, Heating
and Sheet Metal Dealer

1215 - 19 McKINLEY AVE., S. W.

CANTON, OHIO

ROGERS

Your Friendly Jewelers

FAMOUS FOR DIAMONDS

Watches of the Airways

MASSILLON, OHIO

Canal Fulton, Ohio

Dial 5281

Paul R. Swigart

Funeral Director

Invalid Car Service

Monuments

Compliments of

DUMONT ATHLETIC GOODS

W. V. Studer and T. A. Studer

134 Second Street, S. E.

CANTON, OHIO

MILLER AUTO SUPPLY

Machine Shop Service

Sherwin-Williams Automotive Finishes

224 Lincoln Way, W., Massillon, Ohio

Phone 3056

STONE BROS. *Clothes*

SUITS OF ALL PATTERNS FOR THE
COMING GRADUATES

A Complete Line of

**Sport Slacks, Coats and Twosomes
Hats • Furnishings • Shoes**

104 Lincoln Way E.

Massillon, Ohio

For Finer Quality Everything in Jewelry

R. K. Sutter, *Jeweler*

MASSILLON'S QUALITY STORE

Credit Terms

Phone 5858

25 Factory St. S. E.

The Sanitary Laundry and Dry Cleaning

421 First Street, N. E. Massillon, Ohio

Plenty of Parking Space

*Drive in off the street
to our front door*

*One block south of
St. Mary's Church*

LINDE'S

LADIES' READY-TO-WEAR

23 LINCOLN WAY EAST

Exclusive, But Not Expensive

Phone 7374

The Exchange Bank Co.

DEPOSITS INSURED

J. L. FROMHOLTZ

*Distinguished Jewelry and
Friendly Service*

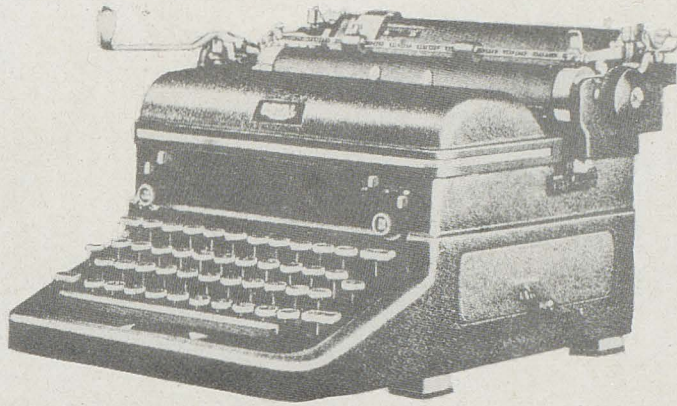
154 Lincoln Way W.

Phone 5915

MASSILLON, OHIO

BENSON TYPEWRITER CO.

ROYAL



STARK COUNTY DEALER

336 Fourth Street, N. W.

Canton, Ohio

THE CERES SUPPLY CO., INC.

ROBERT R. HESS AND SON

Manufacturers of

CERES FRESH FEEDS

Distributor of Full-O-Pep and Pratts Feeds

HIGHER QUALITY FEEDS FOR LIVESTOCK AND POULTRY

Millers of

**High Grade Pastry and Blended Family Flour
Made From YOUR Wheat**

FARM SUPPLY

Carload Shippers and Receiver of Grain

Tremont Ave. W. at B. & O. R. R.

Phone 5111

MASSILLON, OHIO

**THE KOONS WALLPAPER
CO.**

*Wallpaper • Window Shades
Linoleum*

55 N. ERIE

DIAL 4434

GREEN'S MUSIC STORE

*A Complete Music Service
Since 1920*



**We Repair—Buy—and Trade
New and Used Instruments**

We Teach All Band Instruments

124 Cleveland Ave. S. W. Phone 4-3522
CANTON 2, OHIO

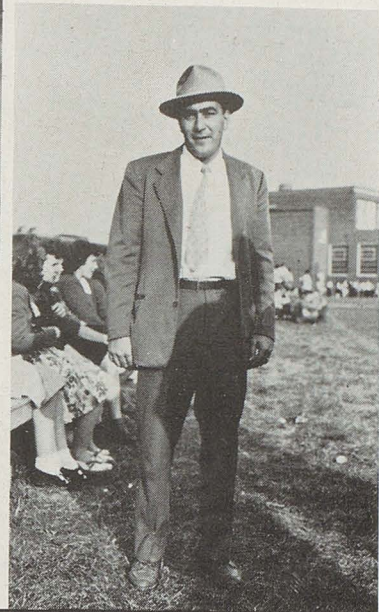
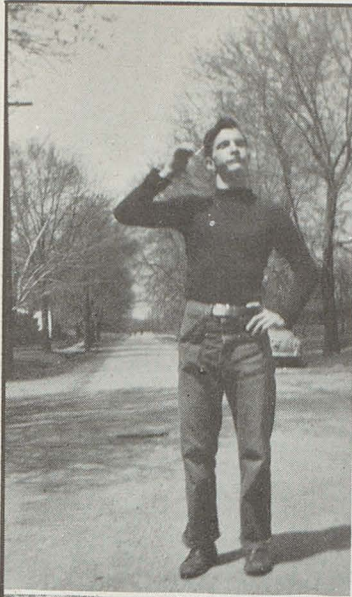
H. L. FRIEND MOTOR SALES

CADILLAC & OLDSMOBILE

306 ERIE STREET N.

MASSILLON, OHIO

PHONE 7635



2 GREAT CLEANERS



One Great Name
HOOVER

THE HOOVER COMPANY
NORTH CANTON, OHIO

13432

***By reading, we broaden
the scope of our lives***



THE EVENING INDEPENDENT

THE DOVER METAL PRODUCTS COMPANY

METAL FABRICATING • PAINTING • WELDING

CANAL FULTON

PHONE 2326

LINWAY FINE FOOD

Steaks, Chicken, Chops and Fish



Sandwiches and Fountain



Room for Parties and Banquets



REEDURBAN, OHIO

W. B. MILLER

Compliments
of

Florian P. Cuthbert, M.D.

SCHALMO IMPLEMENT

McCormick - Deering
Tractors and Implements



New Idea Spreaders



Repairs
Fence and Farm Hardware

Compliments of

FULTON RECREATION

POCKET BILLIARDS
SPORTING RESULTS



Phone 2262

Hardware for Hard Wear

●

**ZANDERS & RUSS
HARDWARE, INC.**

Dial 2397

CORNER CHERRY AND WALNUT

CANAL FULTON, OHIO

Established 1888

Phone 3-9131

**THE A. C. EYNON
PLUMBING COMPANY**

**Plumbing, Heating, Ventilating
and
Air Conditioning Engineers**

236 WALNUT AVENUE, N. E.

CANTON, OHIO

Martin Sound Systems

—●—

**Bell and Howell Motion
Picture Equipment**

—●—

**Centralized Sound Systems for
Schools and Churches**

—●—

50 CHARLES AVENUE, S. E.

Massillon, Ohio

Phone 8586

Compliments of

**TUSCORA
FOUNDRY SAND CO.**

●

**OTIS D. CLAY
&
SONS**

W. E. GILCHER LUMBER COMPANY

Mule Hide Roofing

Lumber • Sash • Doors
Millwork

PHONE
RES. 2256
BUS. 2337

FELLMETH SODA BAR and RESTAURANT

*"Home of the famous
Ham Sandwich"*

AGENCY FOR SCHICK SHAVERS

The only
way to shave

Excellent Graduation Gift

THE CANTON HARDWARE COMPANY

Established 1865



Good hardware

like friendship

endures

All Work Guaranteed
and Insured

Pick-up and
Delivery Service

HULL ECONOMY DRY CLEANING CO.

We Operate Our Own Plant

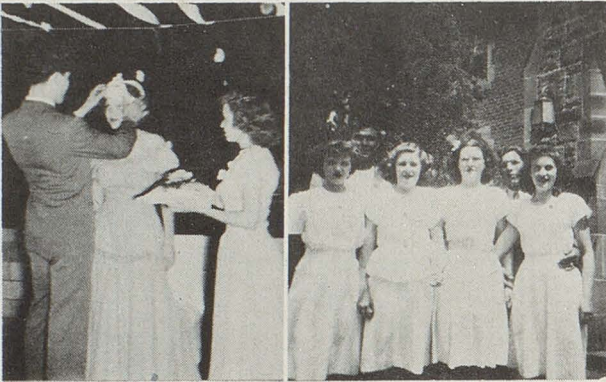
633 SOUTH ARLINGTON STREET

Tel. PR-2119 — Akron, Ohio

Tel. 2282 — Canal Fulton

**OSER'S
GIANT ELM DAIRY**

Pasteurized Products



Compliments of

HOFSTETER BROS.

DON'T FORGET!

**"WE BUY FURS, HIDES,
AND WOOL"**

MAX RUPE

5c to \$1.00

Store



***Congratulations
to the Class
of 1948***

LLOYD W. SMAIL

**AUTHORIZED
TAPPAN DEALER**

**"The Best"
in
Gas Appliances**

LYN'S LUNCH

*Fountain Service
Lunch and Candy
Cigarettes*

RALPH AND MARY FRASE
Manchester, Ohio

Edna's Beauty Shoppe

Operated by

EDNA and EARL ZIMMERMAN

*Compliments of
Friends
from Canton*

Ashton Service and Garage

On ROUTE 93
CANAL FULTON

ARMAN'S
KITCHEN-COOKED
POTATO CHIPS

L. C. HARDGROVE, Owner
PHONE C. F. 2218

Fulton Heating & Supply

Roofing - Spouting - Electric Pumps

CANAL FULTON, OHIO

Compliments of
Texaco Gas Station

ROUTE No. 21
Canal Fulton, Ohio

A. C. MAY, Proprietor

W. B. MYERS

FORD CARS and TRUCKS

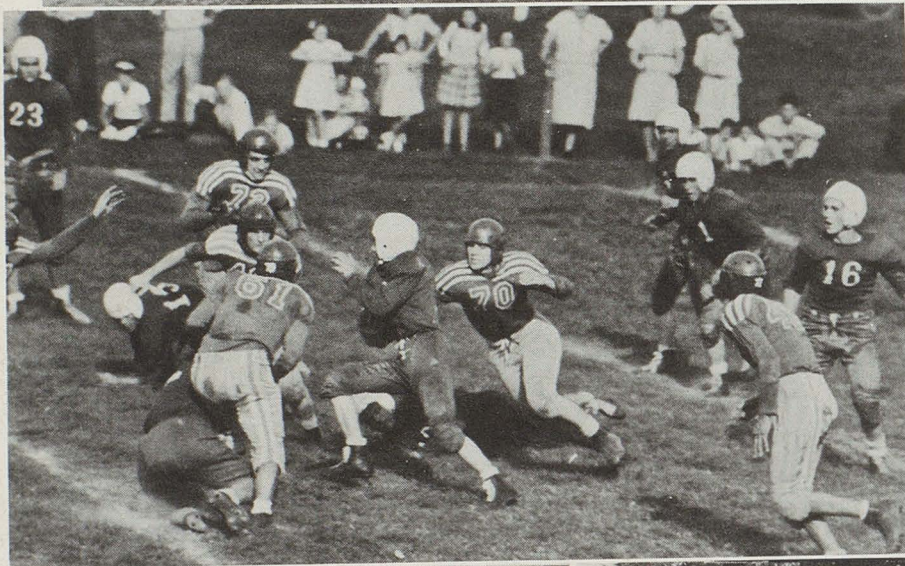
PHONE 2333

JACK SWARTZ'S Home-Dressed Meats

BEEF • PORK
GOOD ALL-PORK SAUSAGE
HOME-RENDERED LARD
YOUNG TENDER BEEF

*Meet me at
Club 21*

SIBILA'S NEW PLACE



LOCKHART

EXCAVATING AND GRADING CONTRACTORS

Farm Lakes

Dredging

Scoops

Backhoes

Shovels

Earth Movers

Water and Sewer Lines

Street Grading

Bulldozers

Cranes, Clams

Air Compressors

Concrete Breakers

"Atlas Held The Earth"

"We Move It"

Office and Yard
535 Spicer Street
HE - 0823
JE - 4528
Akron 11, Ohio

Residence
Canal Fulton and
McDonaldsville Road
R. D. #1
Canal Fulton, Ohio

Compliments of

C. R. KURTZ

GAS AND OIL HEATING

DeSoto—Plymouth

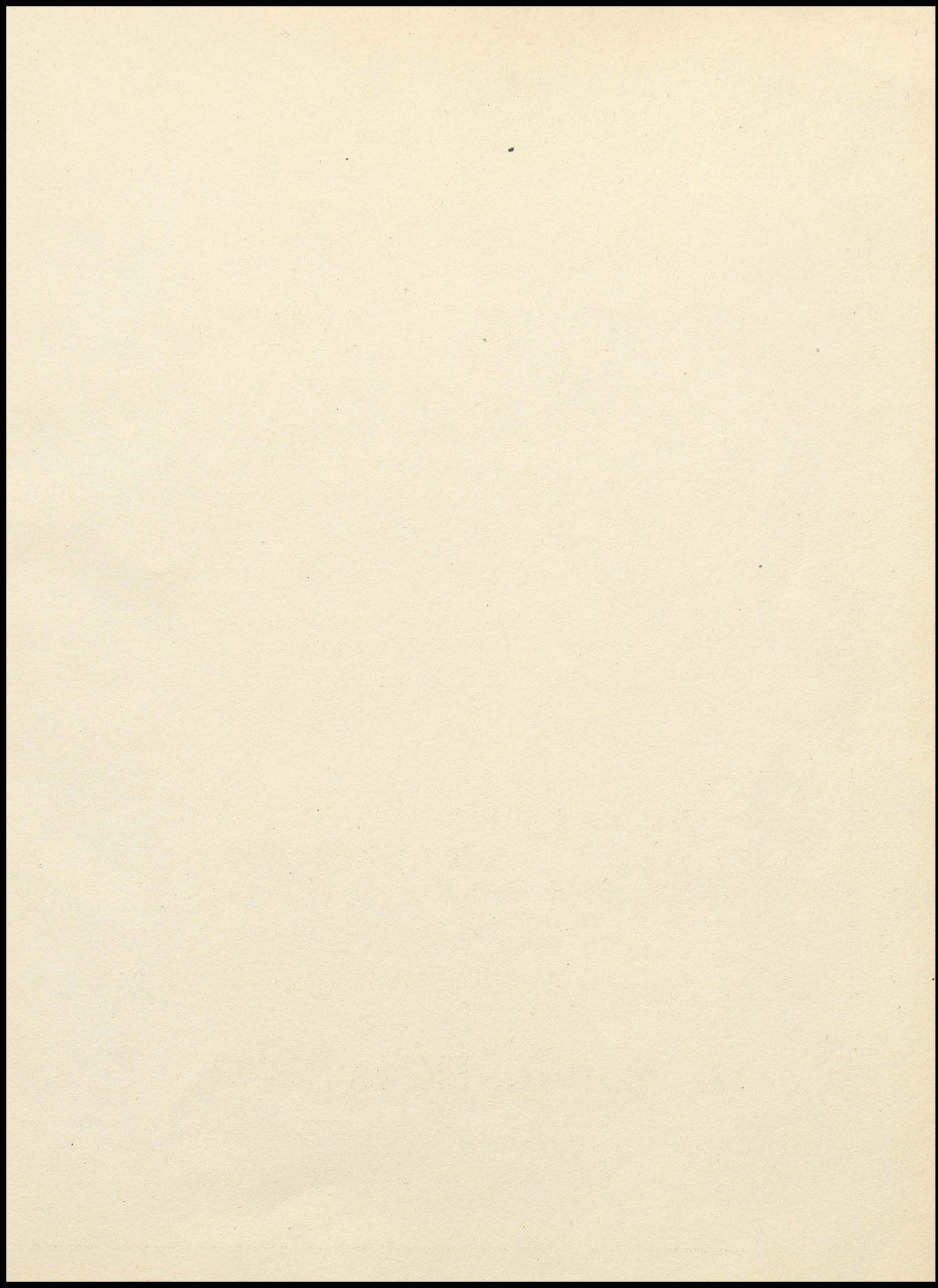
PHILCO

Radios—Refrigerators

THOR

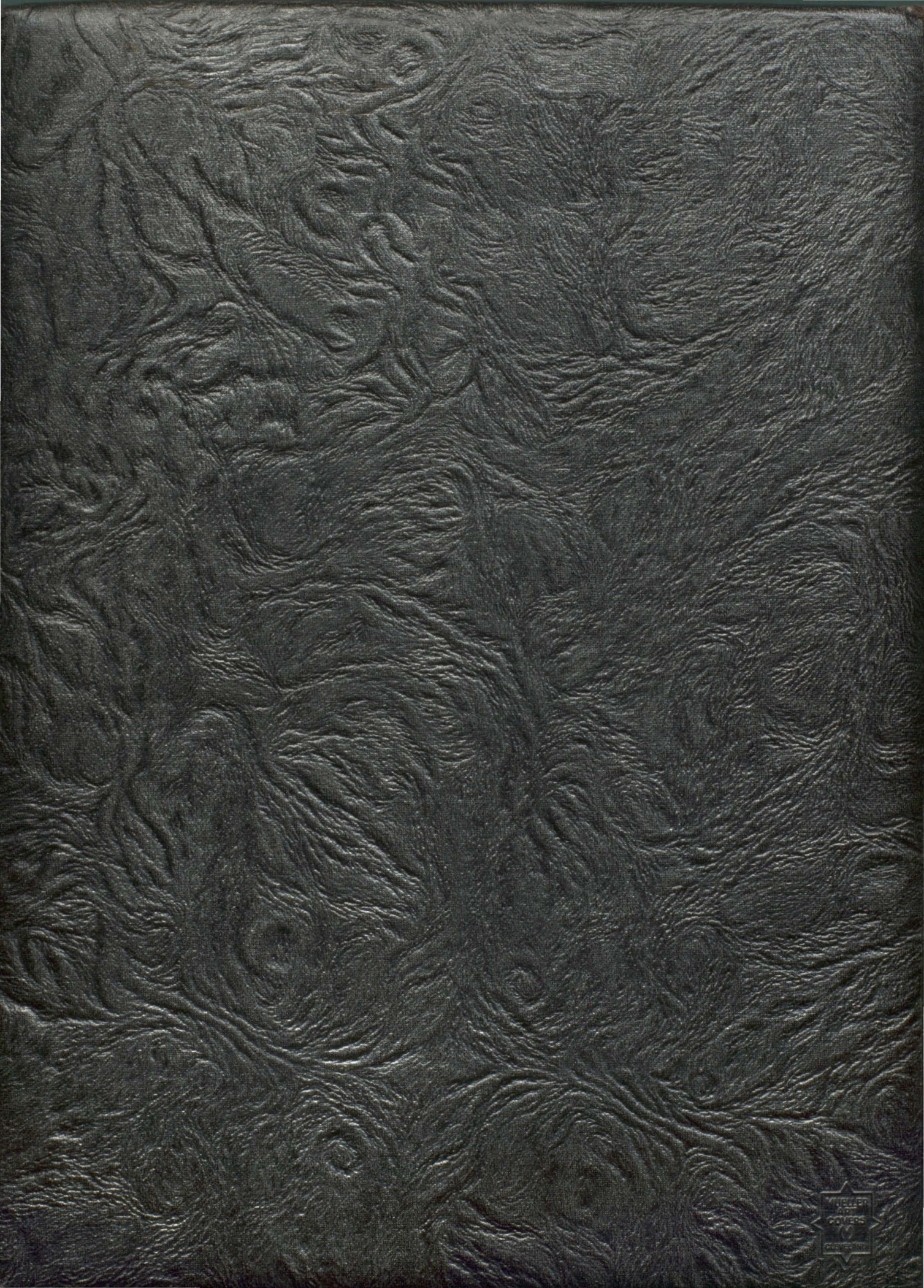
Washers—Ironers

E. E. PARKER MOTOR CO.









WHEELER
AND
COVERS
CORPORATION