

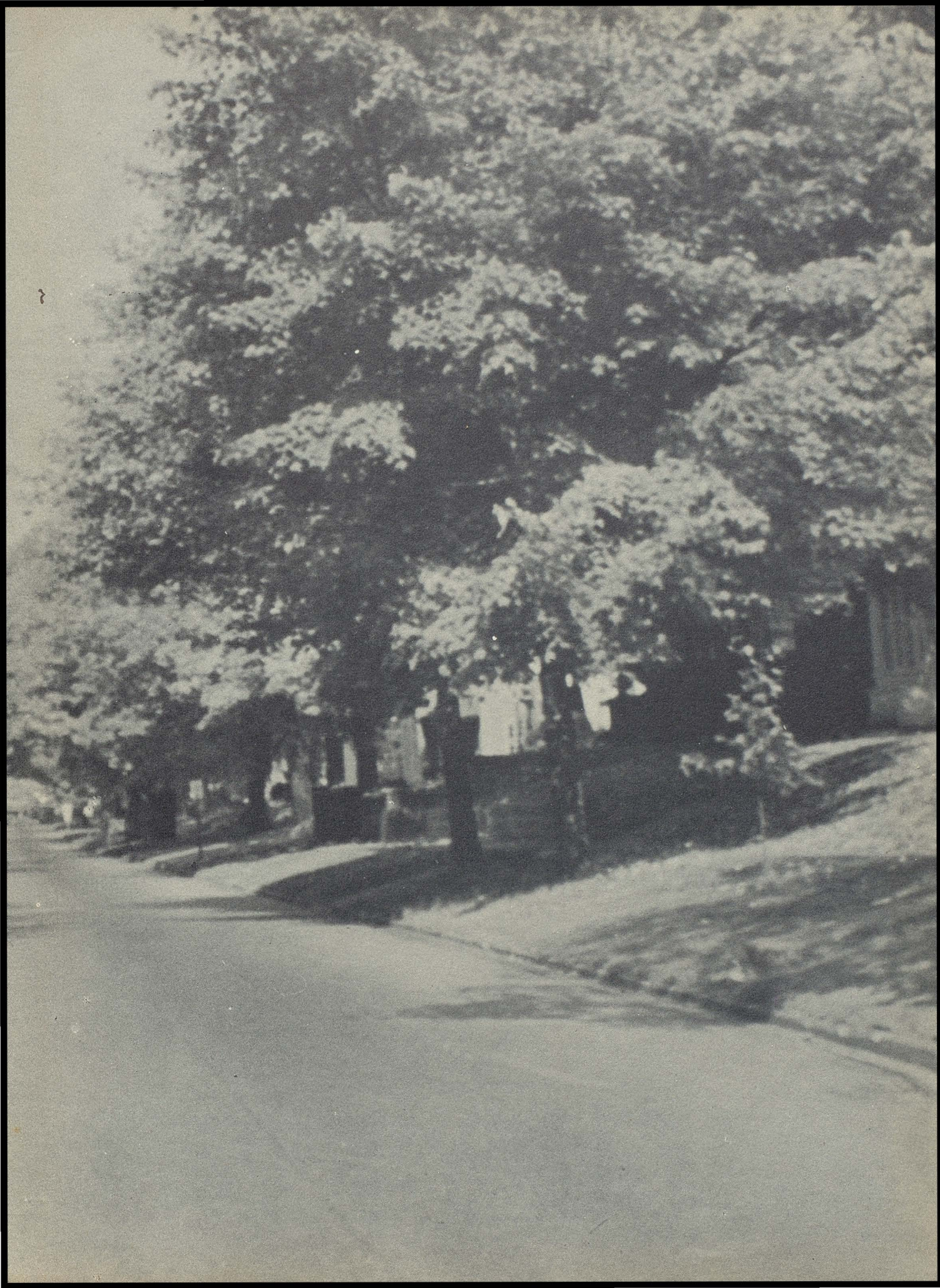


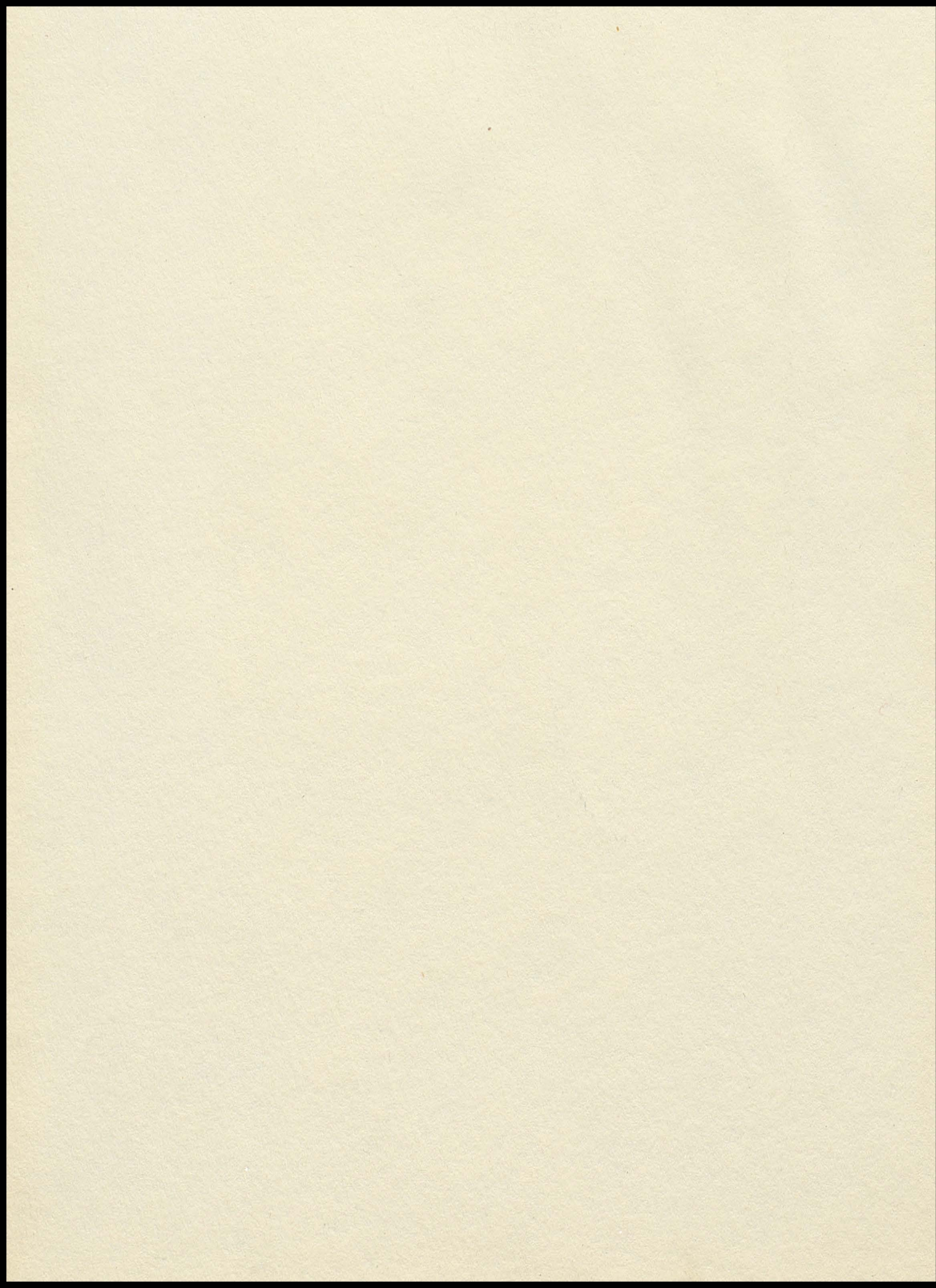
The image shows the front cover of a book. The background is a deep red color with a complex, swirling, marbled texture. Overlaid on this is the title 'Fultonian' in a large, stylized, light-colored font with a dark outline. The 'F' is particularly large and features a long, sweeping tail that curves downwards and ends in a small star. To the right of the title, the number '52' is printed in a similar light-colored font with a dark outline. The overall design is classic and elegant.

Fultonian

52









PRESENTING
THE

© 1952

WILTONIAN



BUSINESS MANAGERS



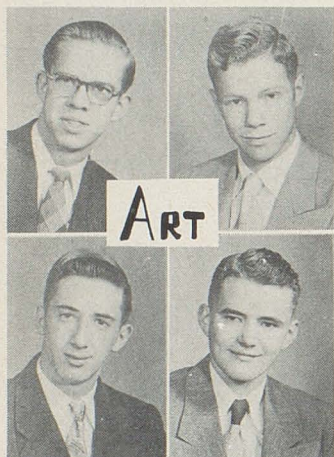
ACTIVITIES



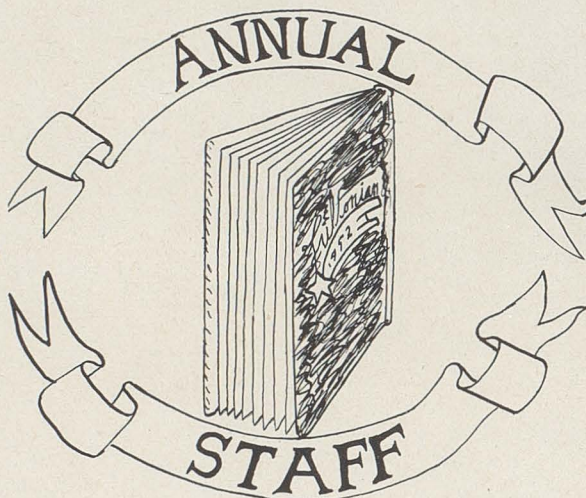
EDITOR



MUSIC



ART



SENIORS

ASSISTANT EDITOR

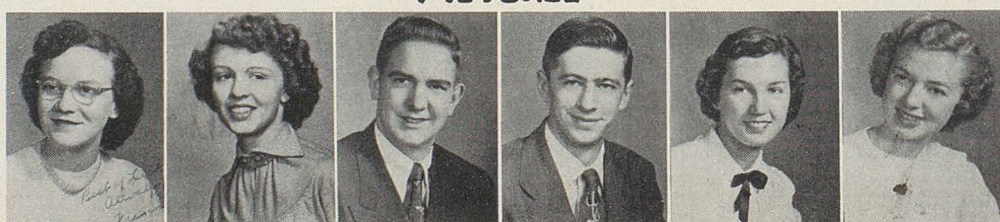


SPORTS



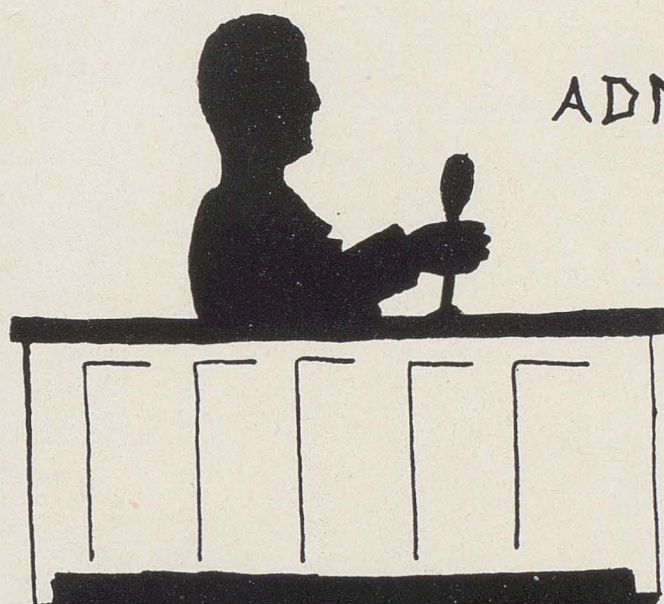
GRADES

PICTURES

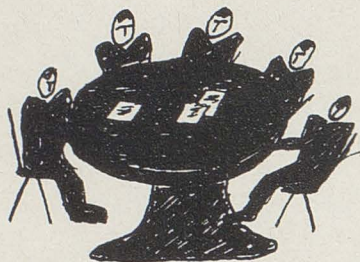


FACULTY

AND
ADMINISTRATION



THE BOARD OF EDUCATION



VIRGINIA GILLMAN
School Secretary
Clerk of the Board

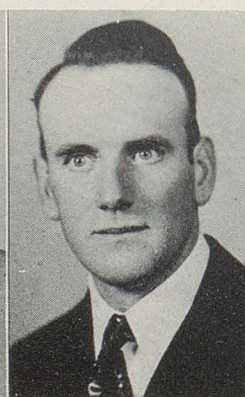


CLYDE GESAMAN
President

WILBUR FELLMETH
Vice President

WILLIAM A. WAGNER C. RANDALL KURTZ

DON H. McMILLEN

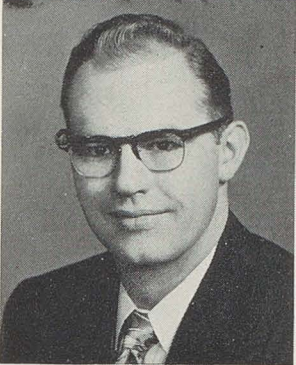




PUFFENBERGER



FLETCHER



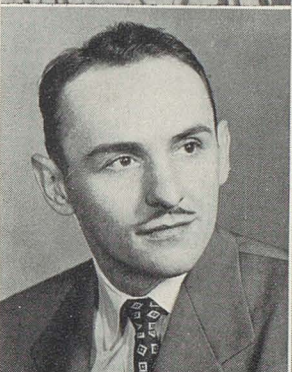
RANNIGAN



LAWRENCE



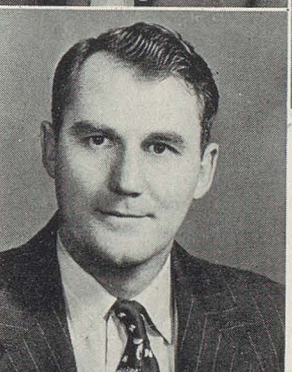
SIMPSON



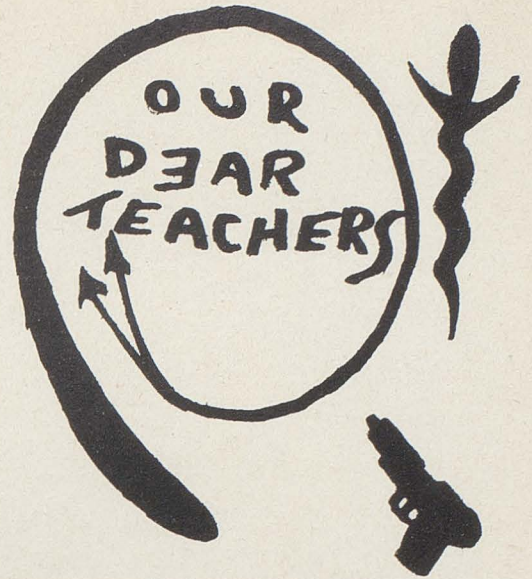
SABOL



WEAVER



KETTER



WILLIAM H. KNIGHT
Superintendent Of Schools



CLASS OF = 52 = HISTORY

The 9th day of September of 1940 was an important event in our lives. This was our first day of school, which had been looked forward to expectantly. Trouping through the door, we were greeted by our first teacher, Miss Mary Buss, who gave us all seats and introduced herself. When all were counted it was found our class consisted of 21 pupils. They were: Cal Arthur, Dick Harbaugh, Wesley Cunningham, Bonnie Long, Marion Root, Carol Bauman, Glen Swigart, Marjorie Neidert, Alvin Notch, Bobby Fudge, Nora Hostetler, Coyia James Fox, Janet Hill, Shirley Hartley, Patsy Fox, and a new pupil, Jerry Cuthbert. Hann, Bobby Gesaman, James Smith and Bill Greene, and we built a post office in our room and then took the long and exciting trip down town to see the second grade. We left school quite happily to return the next year as the second grade. We missed some familiar faces. Bobby Gesaman, Nora Hostetler, Shirley Hartley, Wesley Cunningham and Bobby Donnenwirth, who had all moved. But we gained Kenneth Decker and Clyde Lyons from other schools. Our teacher this year was Miss Goldie Vianie. Mae Hutchinson from other schools. Our teacher was Miss D.D. Hammond. We lost Lester Roy Ellis, Ester Twaddle, Bobby Humble and Don Sullivan.

The fourth grade, under the guidance of Mrs. Carr, had many activities. This year we gained Ed Moore and Mary Ann Greene. We had a reading contest which was won by Don, Janet, Marion, and Carol. The fifth grade, under the guidance of Mrs. Carr, had many activities. This year the new faces were Denzil Piggott and Tom Sewell. I'm sure that we will always remember standing at the blackboard and repeating "Invert the divisor and multiply."

The reading contest this year was won by Carol and Janet. When school started the next year we were found in the seventh grade under Mrs. Hunter. The new pupils were Kenneth Boyer and Marion Root. Denzil Piggott, Mary Ann Greene, Charles Becker, and Joan Jastraub, Barbara As the year began in our last year in grade school we were studying under "iron hand" of Mr. Summers. Our new pupils were Orval Parker, Donna Perry, Barbara White, Noreen Simons, and Verna Budich. This was the way our Senior class came on.

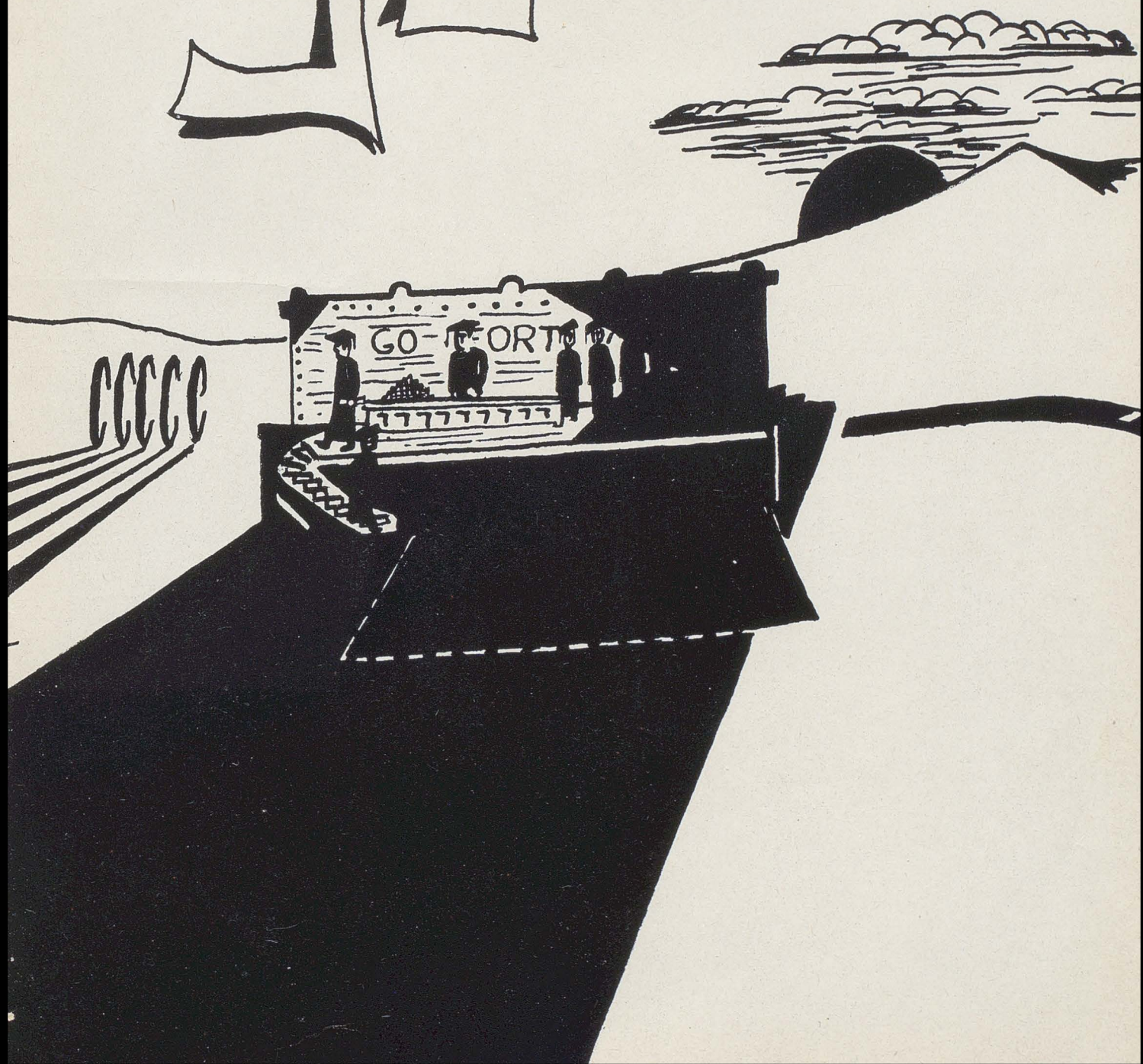
Trudging faithfully to school on September 7, 1948 were the members of the Canal Fulton High School Freshman Class. These were: Norma Jean Mosgrove, Cecelia Marthey, and Janice Setterlin from Newman; Mary Workinger, Beverly Stemple, and John Bosley from North Lawrence; and James Stephan from the Parochial School. We lost Cal Arthur, Walter Gill, and James Stephen from the Parochial School. We selected Mr. Selch to teach us the "ropes" of high school etiquette. Although we knew little of it, we learned our etiquette with assistance and leers from the upperclassmen. During this year, Bob Humble, Lawrence Oschenbein, Walter and James Gill withdrew from school. During the last six weeks of this year we gained a new pupil, Frances Wise.

When school began our Sophomore year we had lost only Mary Workinger, Donna Perry (who thought the grass was greener over yonder in Clinton), and Joan and Paul Jastraub (as an old Sophomore), and John Glazer. There were three new faces: Wanna Ledford, Paul Simons, Clyde Lyons, Lois Hadley, Carol Bauman, and Paul Simons. This year Mr. Feduniak was our sponsor.

As Juniors, we were ready for anything, so our play was held on December 7, 1950. It was "We Shook the Family Tree." Later we chose our rings and sweaters. Our Prom was held on May 5th. We had a successful year under the sponsorship of Miss Fletcher. The new pupils were: Jack Conkle and Lillian Moore. Kenneth Decker left school.

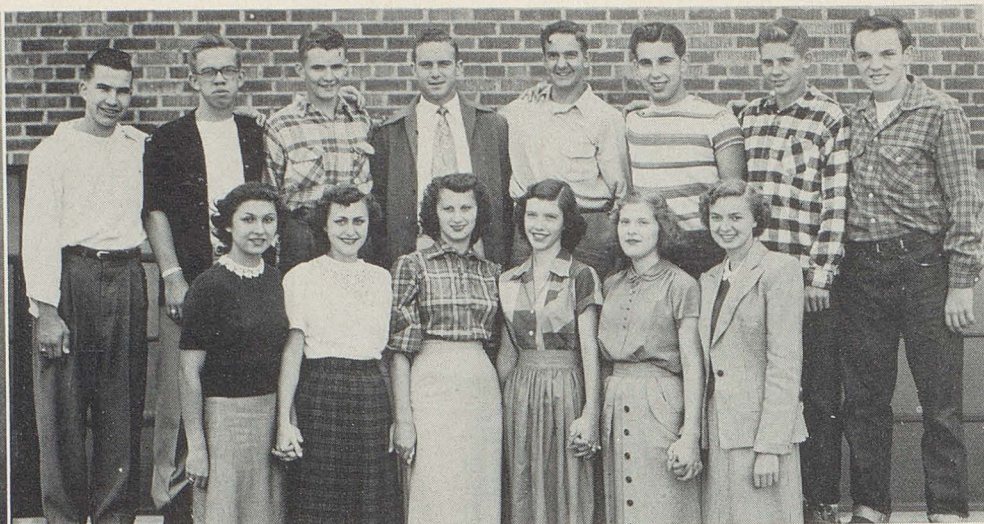
At the beginning of our Senior year we greeted John Dittmer, who spent another semester with us as a Senior. Lillian Moore had left during vacation and soon after school began Barbara White withdrew from school to become Mrs. Oren Warner. We are looking forward to the Senior play in March, the Prom in May, and Baccalaureate and Commencement following soon after.

SENIORS



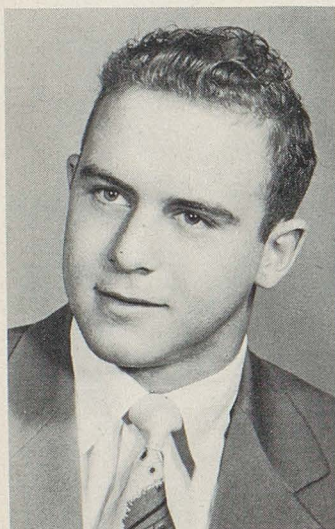


MISS FLETCHER
Class Sponsor



TWELVE YEARS TOGETHER

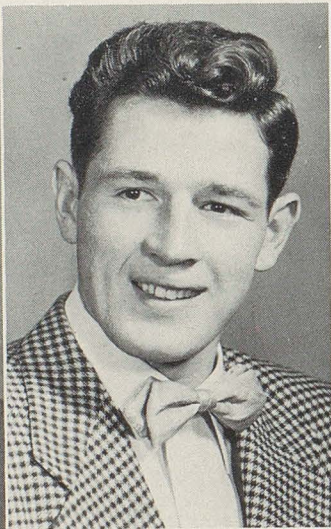
We students who have spent the past twelve years together look back over the years and see how our original class has decreased. But we who have remained together have fond memories of the good and the bad times we have had. We hope that in the years to come we will not grow too far apart, and will always remember our classmates and our Alma Mater as being a memorable chapter in the story of our lives.



GLEN EDWARD SWIGART
"Willie"

A champion in the field of sports.

Band 1-2-3-4
Band President 3-4
Band Treasurer 1-2
Orchestra 1-2-3-4
Solo and Ensemble 1-2-3-4
Glee Club 1-2-3-4
Commercial Club 4
Latin Club 1-2
Football 1-2-3-4
Football Captain 4
Basketball 1-2-3-4
Basketball Co-Captain 4
Baseball 1-2
Hi-Y 3-4
Class Vice President 1
Class President 2-4
Student Council 4
Annual Editor
Junior Play Cast
P.O.D. Project



ORVAL K. PARKER
"Kay"

Athletic and handsome, what more could you ask for.

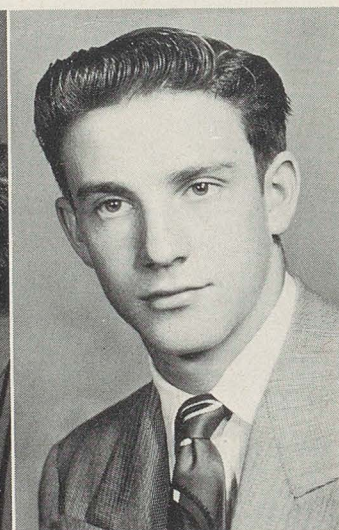
Class President 1-3
Class Vice President 4
Glee Club 1-2-3-4
Latin Club 1-2
Commercial Club 3
Hi-Y President 4
Hi-Y Vice President 3
Hi-Y District President 4
Hi-Y County President 4
Hi-Y 3-4
Football 1-2-3-4
Basketball 1-2-3
Basketball Manager 4
Junior Play
Annual Staff
P.O.D. Project



JANET MAY HILL
"Jannie"

Janet works ambitiously; a nurse is what she wants to be.

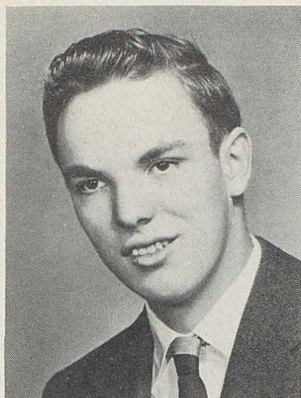
Band 1-2-3-4
Orchestra 3-4
Home Economics Club 1
Solo and Ensemble 1-2-3-4
Class Secretary 1-4
Literary Contest 2-3-4
Class Treasurer 3
Commercial Club 4
Band Librarian 4
Scholarship 1-3
Junior Play Cast
Annual Co-Editor
Football Queen Attendant 4
Latin Club 3-4
Band Majorette 1-2-3-4
P.O.D. Project



DON DEAN SULLIVAN
"Sully"

A man of all hours and ready for anything.

Band 1-2-3-4
Orchestra 2-3-4
Solo and Ensemble 1-2-3-4
Football 1-2-3-4
Basketball 1-2-3-4
Commercial Club 4
Class Treasurer 4
Hi-Y 3-4
Latin Club 1-2
Junior Play Cast
Annual Staff
P.O.D. Project



HERBERT CHARLES
SEIFERT
"Herb"

A super annual salesman.
Projector Club 3-4
Junior Play
Commercial Club 4
Hi-Y 4
Annual Staff
P.O.D. Project



ROY FREDERICK ELLIS
"Roy"

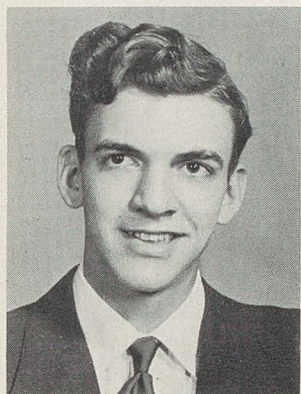
In every deed of mischief
Roy has a hand.
Football 1-2-3-4
Basketball 1-2-3
Annual Staff
Junior Play
P.O.D. Project



SHIRLEY JOAN FUDGE
"Suds"

She can say all that — and
in one breath, too!

Y-Teens 1-2-3-4
Y-Teen Chaplain 2
Y-Teen Vice President 3
Y-Teen President 4
Y-Teen District President 4
Home Economics Club 1-2-3
Home Economics Treasurer 2
Commercial Club 3-4
Band 1-2-3-4
Glee Club 1-2-3-4
Orchestra 1-2-3-4
Solo and Ensemble 1-2-3-4
Junior Play Cast
Annual Staff
Newspaper Staff
Snowball Queen 4
Band Majorette 3-4
P.O.D. Project
Band Queen Attendant



KENNETH DALE BOYER
"Kenny"

His height is as tall as his
friendliness.

Hi-Y 3-4
Hi-Y Secretary 3
Basketball 3-4
Football Manager 4
Latin Club 1-2
Commercial Club 3
Essay Contest 3
Literary Contest 3
Student Council 4
Junior Play Cast
Annual Staff



COLYA MARY HANN
"Coyla"

Like A Winter Sky — Sel-
dom Blue.

Home Economics Club 1-2-3-4
Y-Teens 1-3-4
Rainbow Crowner 1
Snowball Crowner 4
Commercial Club 3-4
Glee Club 3-4
Annual Staff
Newspaper Staff
Junior Play
P.O.D. Project



GLORIA ADELINE
SCHWARTZ
"Gloria"

Where she is there is a
friendly atmosphere.

Home Economics Club
1-2-3-4
Y-Teen Publicity Chairman 4
Glee Club 3-4
Commercial Club 3-4
Annual Staff
Newspaper Staff
Y-Teens 1-3-4
Junior Play
P.O.D. Project

FRANCES MAY WISE
"Fran"

True to her word; her work;
her friends.

Norton 1
Y-Teens 2-3-4
Y-Teen Secretary 3
Y-Teen Membership
Chairman 4
Commercial Club 3-4
Latin Club 2
Latin Club Secretary 2
Glee Club 2-3-4
Essay Contest 3
Annual Staff
Newspaper Staff
Newspaper Editor
Junior Play Cast
Literary Contest
P.O.D. Project





PAUL JOSEPH FERDINAND
"Paul"

Easy to get along with.
Projector Club 3-4
Commercial Club 4
Junior Play
Annual Staff
Hi-Y 4
P.O.D. Project

CLASS MOTTO

Go Forth
AND Return
With Honor



BONNIE JEAN LONG
"Bonnie"

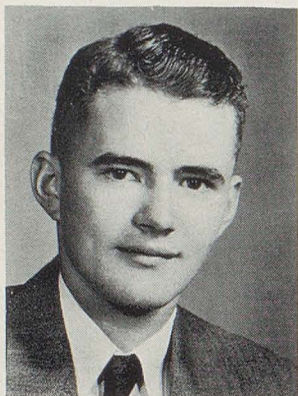
I 'spect she'll always be nice.

Home Economics Club
1-2-3-4
Home Economics Music
Chairman 2
Home Economics Vice
President 3
Home Economics President 4
Rainbow Attendant 3
Y-Teens 1-2-4
Snowball Attendant 2
Band 1-2-3-4
Orchestra 3-4
Solo and Ensemble 1-2-3-4
Band Secretary 4
Glee Club 1-2-3-4
Commercial Club 3-4
Scholarship 2
Football Attendant 4
Newspaper Staff
Class Vice President 2
Annual Staff
Band Librarian 1-2-3-4
Junior Play
P.O.D. Project



WILLIAM DWAYNE
GREENE
"Bill"

A splendid fellow.
Basketball 1-2-3-4
Football 2-4
Baseball 2
Hi-Y 4
Annual Staff
P.O.D. Project



JAMES LYNN SMITH
"Jim"

Serious, sensible and a friend to all.
Football 2
Basketball 1-2-4
Projector Club 4
Glee Club 3-4
Commercial Club 4
Hi-Y 3-4
Junior Play
Annual Staff
P.O.D. Project



JANICE EILEEN
SETTERLIN
"Jan"

Sweetest of Homecoming Queens.
Class Secretary 3
Home Economics Club 2-3-4
Home Economics Social
Chairman 3
Home Economics Music
Chairman 4
Commercial Club 3-4
Newspaper Staff
Newspaper Editor
Essay Contest 2
Glee Club 4
Y-Teens 4
Football Queen 4
Annual Staff
P.O.D. Project



BEVERLY JANE STEMPLER
"Bev"

A quiet manner follows her footsteps.

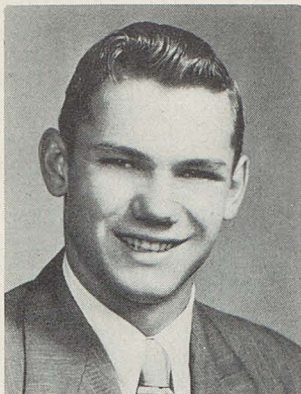
Y-Teens 1-2-3-4
Y-Teen Publicity Chairman 3
Y-Teen Secretary 4
Home Economics Club 1-2-3-4
Home Economics Ways and Means Chairman 3
Literary Contest 2-3-4
Latin Club 2-3
Latin Club Council 2
Commercial Club 3
Scholarship 2
Junior Play Cast
Annual Staff
P.O.D. Project
Glee Club 4

MARJORIE RUTH NEIDERT
"Marg"

Her taste in clothes is her crowning glory.

Band Librarian 1-2-3-4
Commercial Club 3-4
Band 1-2-3-4
Orchestra 3-4
Glee Club 1-2-3-4
Home Economics Club 1-2-3-4
Y-Teens 1-4
Class Secretary 2
Newspaper Staff
Band Majorette 1-2-3-4
Football Attendant 4
Solo and Ensemble 1-2-3-4
Junior Play
P.O.D. Project
Annual Staff



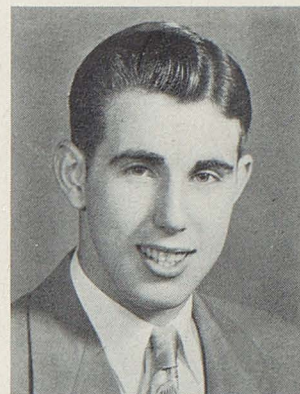


JACK WAYNE CONKLE
"Kunkle"

The Lady Killer.
Brewster 1-2
Football 3-4
Basketball 3
Basketball Manager 4
Hi-Y 3-4
Junior Play
Annual Staff
P.O.D. Project

CLASS Colors

Maroon AND White



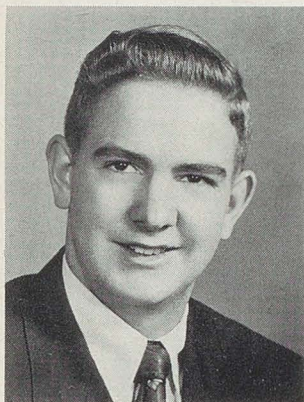
JAMES B. STEPHAN
"Jim"

A friend to all.
Football 1-2-3-4
P.O.D. Project
Junior Play
Commercial Club 4
Annual Staff



JERRY DANA CUTHBERT
"Jer"

Always good for a laugh.
Band 1-2-3-4
Orchestra 1-2-3-4
Glee Club 1-2-3-4
Solo and Ensemble 1-2-3-4
Basketball 1-2-3
Baseball 2
Scholarship 2
Hi-Y 3-4
Hi-Y Chaplain 3-4
Latin Club 1-2
Latin Club Consulter 2
Commercial Club 3-4
Essay Contest 3
Literary Contest 2-3-4
Basketball Manager 4
Annual Staff
Junior Play Cast
P.O.D. Project



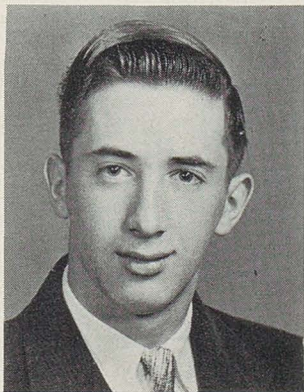
JAMES DUANE FOX
"Jim"

Fulton's Best Drum Major.
Band 1-2-3-4
Orchestra 3
Glee Club 1-2-3-4
Band Drum Major 2-3-4
Latin Club 1-2
Commercial Club 3
Junior Play
Annual Staff
Solo and Ensemble 2-3-4
P.O.D. Project



NORMA JEAN MOSGROVE
"Norm"

Who has my handbag?
Band 1-2-3-4
Solo and Ensemble 1-2-3-4
Y-Teens 1-2-3-4
Y-Teen Social Chairman
Latin Club 1-2
Commercial Club 3
Literary Contest 1-2-3-4
Junior Play Cast
Annual Staff
P.O.D. Project



LARRY LEMAN DOUGLAS
"Dougie"

Quiet and shy, but in
brains, Oh, my!
Band 1-2-3-4
Band Vice President 3-4
Band Librarian 4
Solo and Ensemble 1-2-3-4
Orchestra 1-2-3-4
Glee Club 1-2-3-4
Basketball 3
Baseball 1-2
Annual Staff
Latin Club 1-2
Hi-Y 4
Junior Play
P.O.D. Project

PATRICIA ANN FOX
"Pat"

She may not say much, but
her thoughts are deep.
Band 1-2-3-4
Band Queen 4
Majorette 1-2-3-4
Snowball Attendant 3
Glee Club 1-2-3-4
Y-Teens 1-2-3-4
Home Economics Club 2-3-4
Commercial Club 3-4
Newspaper Staff
Annual Staff
Junior Play
P.O.D. Project





JOHN HENRY GLAZER
"Pud"

A man of few words.
Basketball 3-4
Football 1
Junior Play
Annual Staff
Commercial Club 3
P.O.D. Project

CLASS FLOWER

Yellow Rose



DAWN MARLENE SWISHER
"Don"

"Fun for all and all for fun."
Home Economics Club 1
Commercial Club 3-4
Y-Teens 4
Glee Club 2-3-4
Junior Play
Newspaper Staff
Annual Staff
P.O.D. Project



CECILIA MARY MARTHEY
"Ceil"

A blush is beautiful but often inconvenient.
Glee Club 2-4
Commercial 3-4
Y-Teens 4
Junior Play Cast
Newspaper Staff
Annual Staff
Scholarship 3
P.O.D. Project



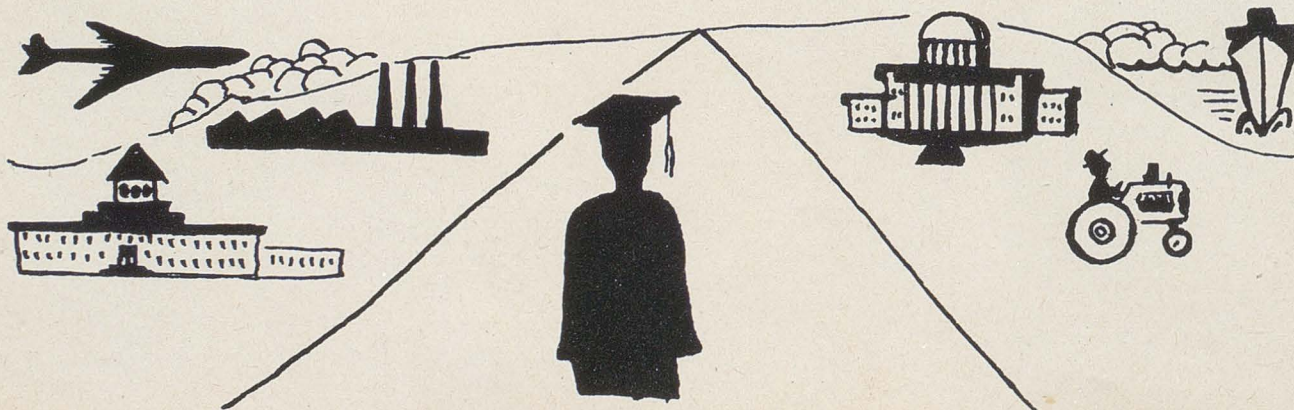
EDWARD ALBERT MOORE
"Ed"

Ed's remarks are quick and clever, jokes and pranks are his forever.
Football 1-2-3-4
Basketball 2-3-4
Latin Club 2
Hi-Y 3-4
Essays 3-4
Student Council President
P.O.D. Project
Junior Play Cast
Glee Club 2-3-4
Annual Staff

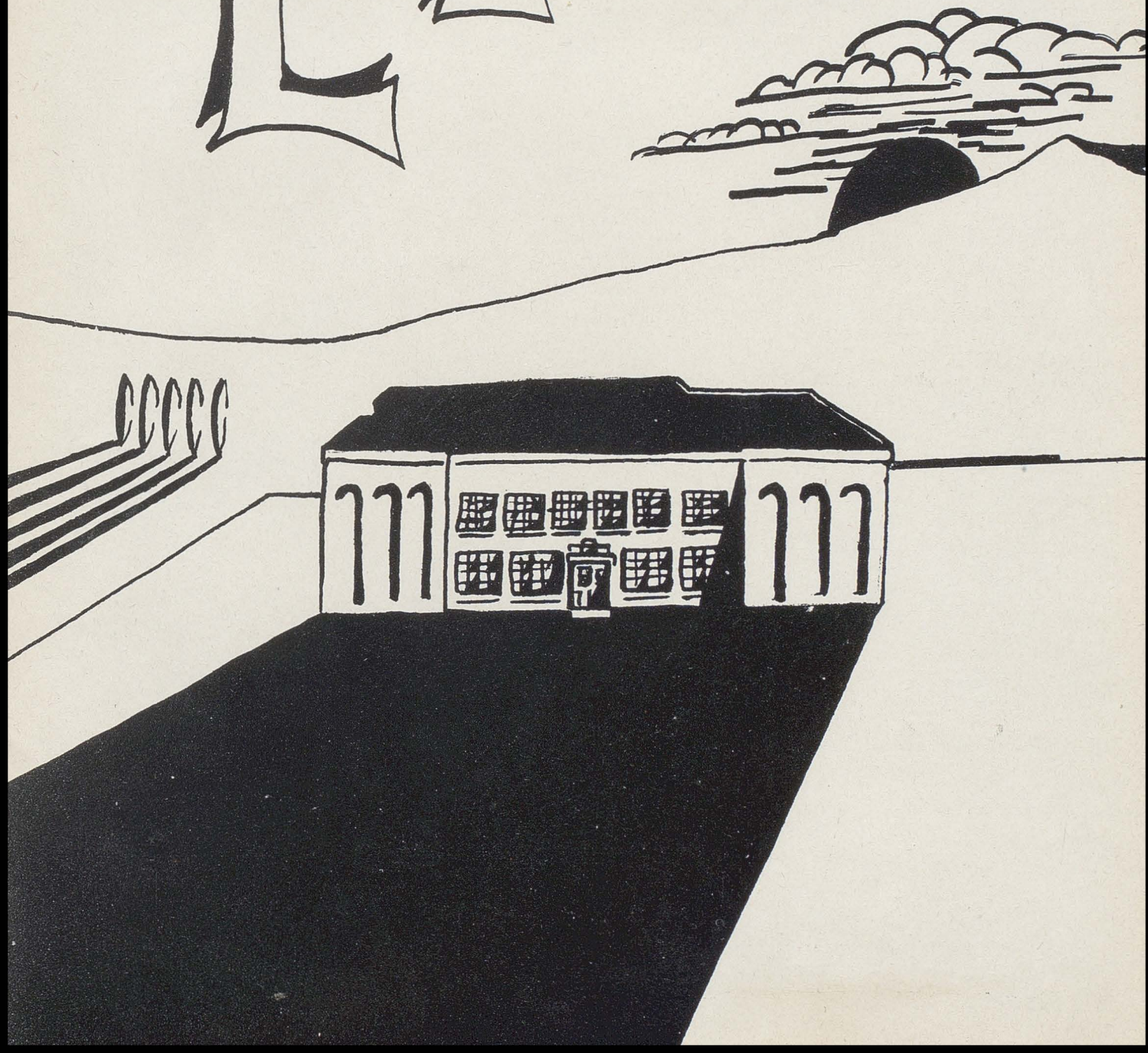


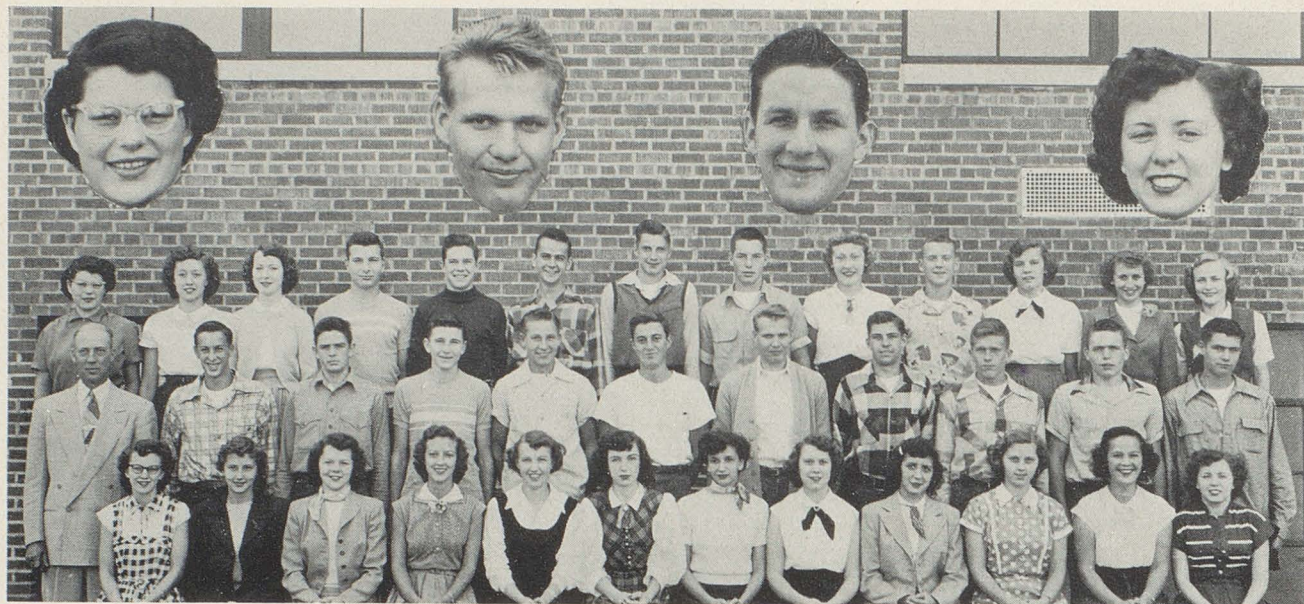
NOREEN EVA SIMONS
"Renee"

Always giggling, always, gay, Noreen will always be that way.
Band 1-2-3-4
Solo and Ensemble 3-4
Home Economics 2
Y-Teens 2-4
Glee Club 2-3-4
Commercial Club 3-4
Annual Staff
Junior Play
Scholarship 2
P.O.D. Project



CLASSES





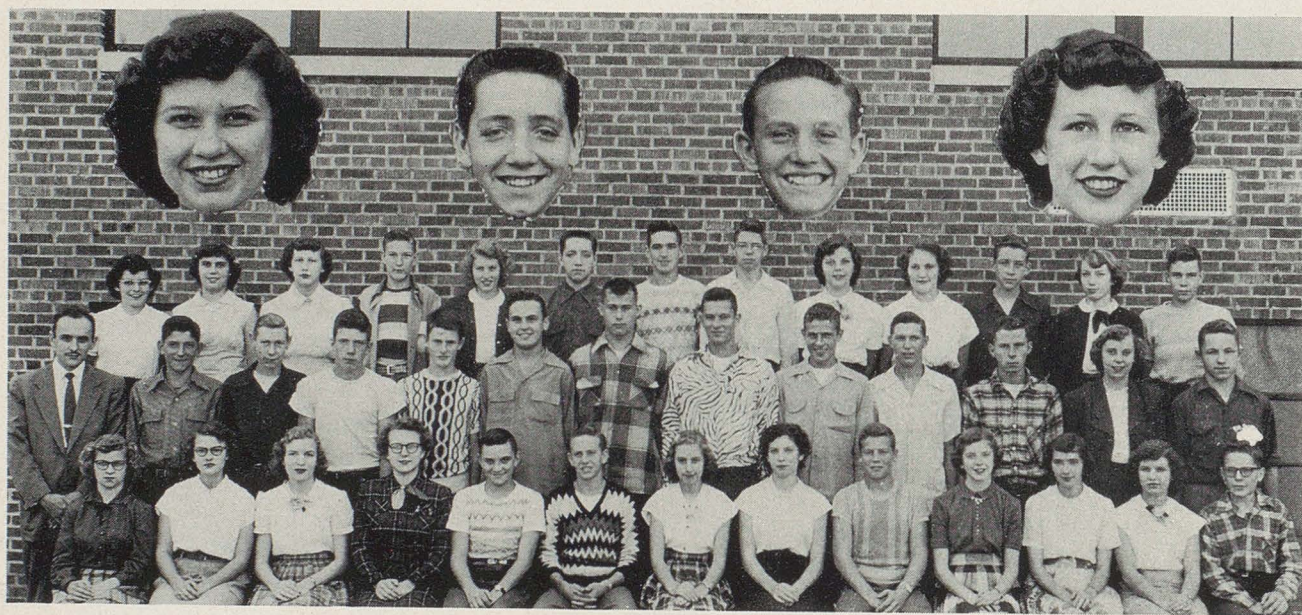
JUNIOR CLASS

Front Row: Peggy Hansel, Barbara Weaver, Ann Gaine, Norma Jean Gerstenslager, Lorene Dewalt, Betty Markus, Cleda Bruegger, Janet Hardgrove, Rosemary McArdle, Shirley Rudersmith, Shirley Shoemaker, Jean Schembechler.

Middle Row: Mr. Weaver, Byron Aughenbaugh, Richard Hartman, Alvin Notch, Raymond Weber, Robert Williams, Robert Knotts, Richard Harbaugh, William Stanford, Harold Ott, William Lorenz.

Back Row: June Brigham, Barbara Nichols, Shirley Hiltbrand, Allen Notch, Edward Norris, Robert Flake, William Fricke, Glen Reichenbach, Janet Geier, Wayne Douglas, Shirley Frink, Mary Lyons, Connie Long.

Absent: Kenneth Darkow.



SOPHOMORE CLASS

Front Row: Doris Dye, Lois Cormany, Marilyn Ferdinand, Sally Hammer, Robert Lawrence, Marvon Sullivan, Florence Bransteter, Mary Martin, Duane Dewalt, Mary Elizabeth Whisler, Genelea Fox, Patty Taylor, Robert Duncan.

Middle Row: Mr. Sabol, Ted Joliff, Donald Turner, Paul Stockert, Lester Decker, George Ott, Lewis Etling, James Neidert, Glen Mauger, Robert Eichler, Shirloc Rudersmith, Janet Miller, Steve Markus.

Back Row: Joan Brigham, Lois Ann Rosche, Janet Gill, Clifford Smith, Gwenna Stanford, James Ebert, Ronald Leaver, Larry Anderson, Mary Jo Greene, Mary Bogard, Paul Shonk, Mary Ann Schroeder, Karl Gilcher.



FRESHMAN CLASS

Front Row: Thomas Fox, Mary Lou Gaddis, Donald Frink, Gary Marthey, Gearold Gerstenslager, Roberta Roop, Marilyn Simons, Janet Heather, Norma Moore, Wilma Snyder, Linda Gesaman, Peggy Boak, William Stockert, Gary Anderson, Richard Koppes, Donald Singer, Marcella Sweigert, Carol Sweigert.

Middle Row: Shirley Elliott, Calvin Franklin, Benny Bloomfield, Clifton Smith, Evelyn Singer, Ronald McClay, Russell Mitchell, Ralph Moore, Roland Albrecht, Joseph Wise, Albert Ott, Nicholas Notch, John Weaver, Ronald Boyer, Robert Oser, Marvin Hardgrove, Joyce Kraft.

Back Row: Patricia May, Barbara Hague, Ruth Ann Fricke, Nancy Stephan, Carolyn Hartong, Catherine Hansel, Joseph Marthey, Lee Hammock, Susan Hann, Barbara Crowe, Don Douglas, Betty Lawrence, Jo Ann Swisher, James Reffner, Lillian Ruehling, Shirley Ludwick, Betty Ries, William Travis, Mr. Rannigan.



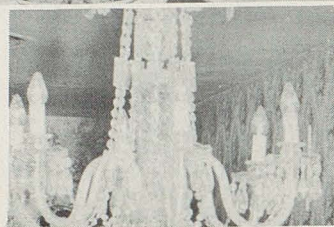
THE STUDENT COUNCIL

The Student Council of Canal Fulton High School was newly formed this year and is now a functioning organization. We have put our faith and trust in this organization to represent us well. We hope sincerely, that the Student Council will always be a worthwhile medium between the students and the faculty of this school.

In previous years, this organization has not succeeded because perhaps the students were not ready to help in the governing of their school. This year, however, the faculty felt that we were ready for this step and we are deeply complimented by the trust that has been put in us. We hope that this year's organization will be a guiding example to the students in future years.



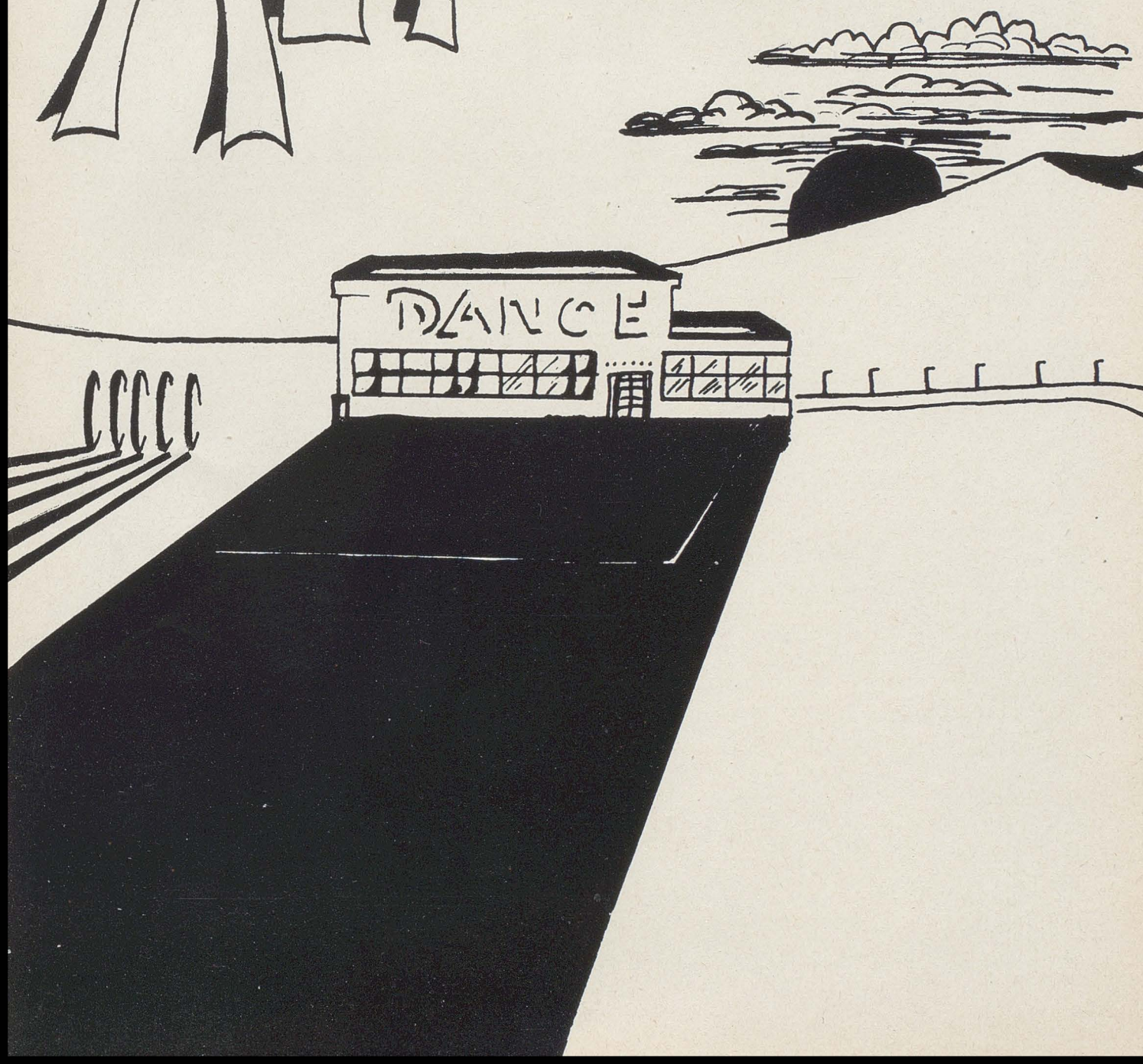
PROM

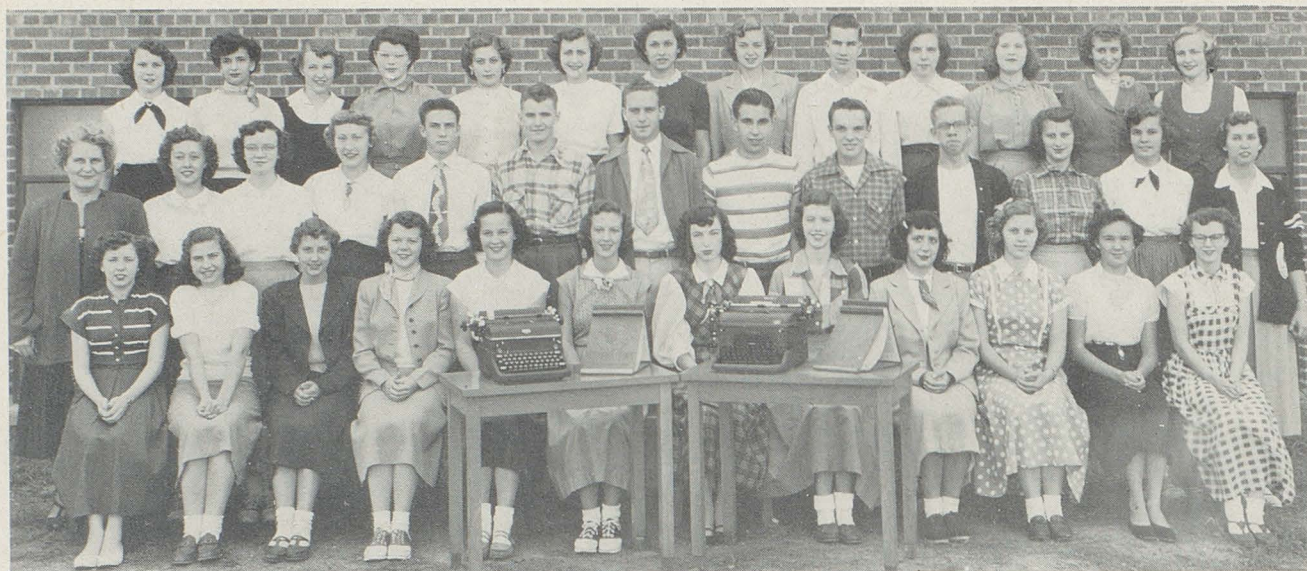


1951

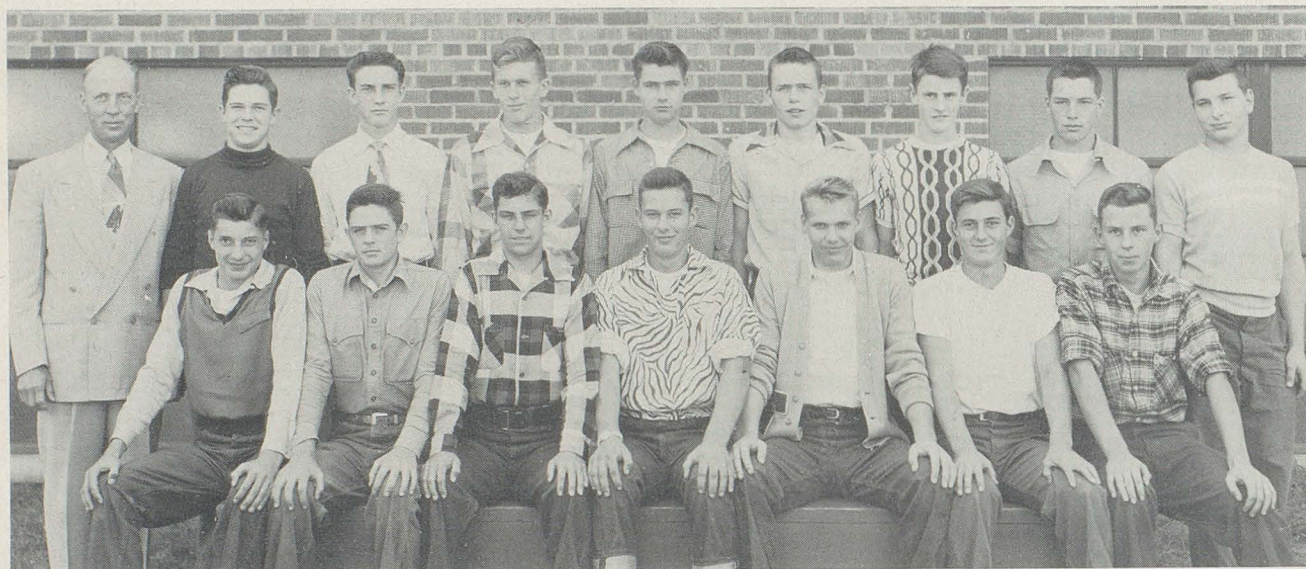


ACTIVITIES





COMMERCIAL CLUB



AGRICULTURE CLASS

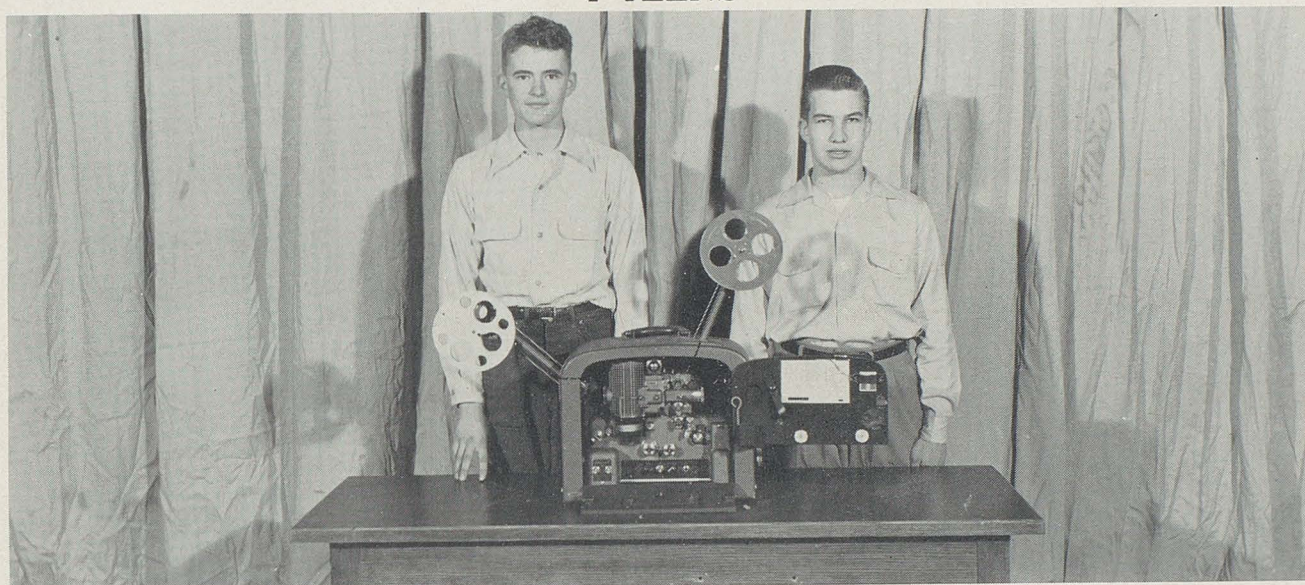


HI-Y

Compliments of Paryl Jolliff



Y-TEENS



PROJECTOR CLUB



NEWSPAPER STAFF
Compliments of Art McGrew



LATIN CLUB



HOME ECONOMICS CLUB



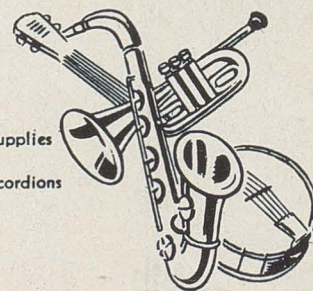
216 Market Ave., South
Canton 2, Ohio

MUSIC CENTER

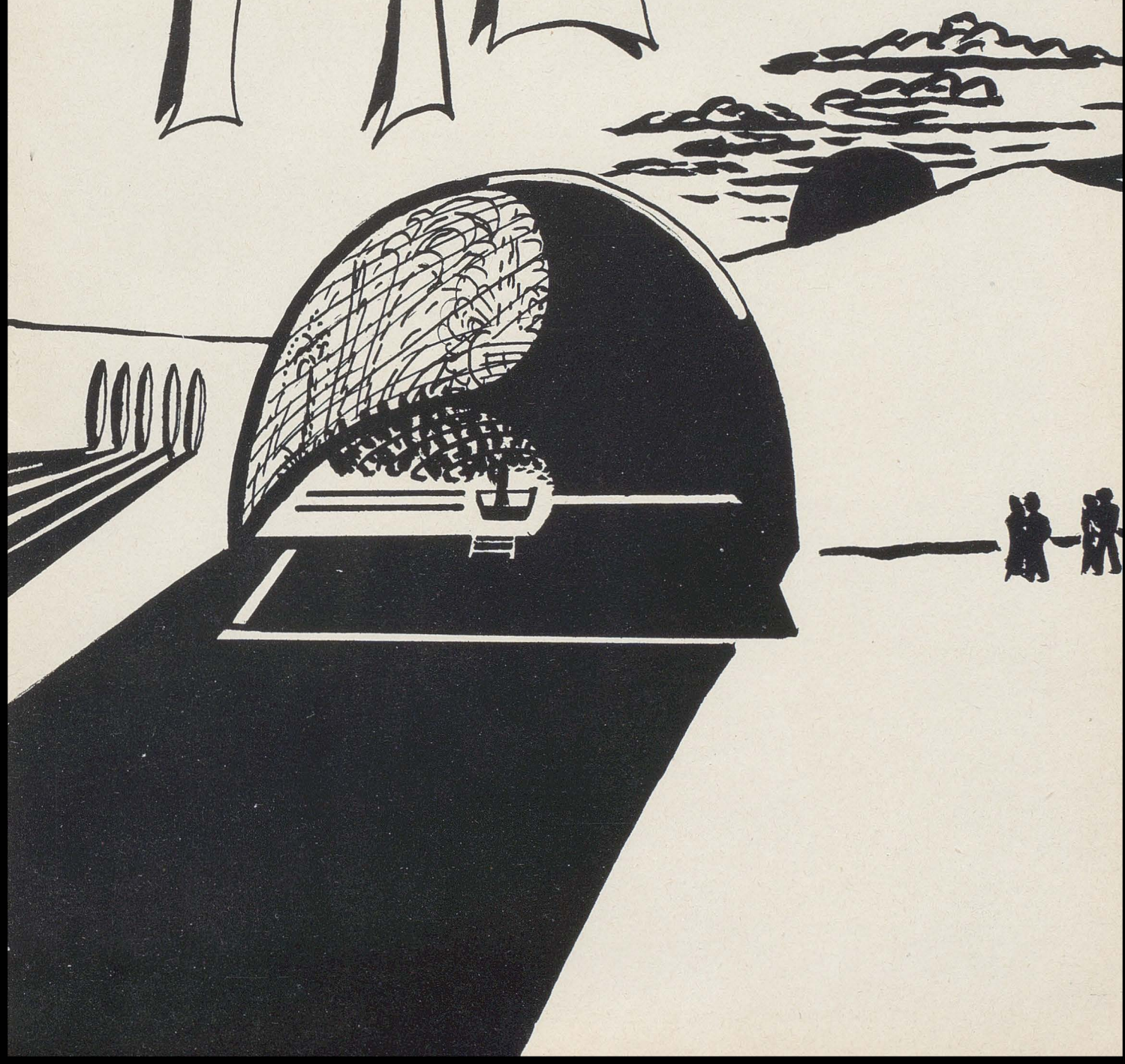
Exclusive Dealers of

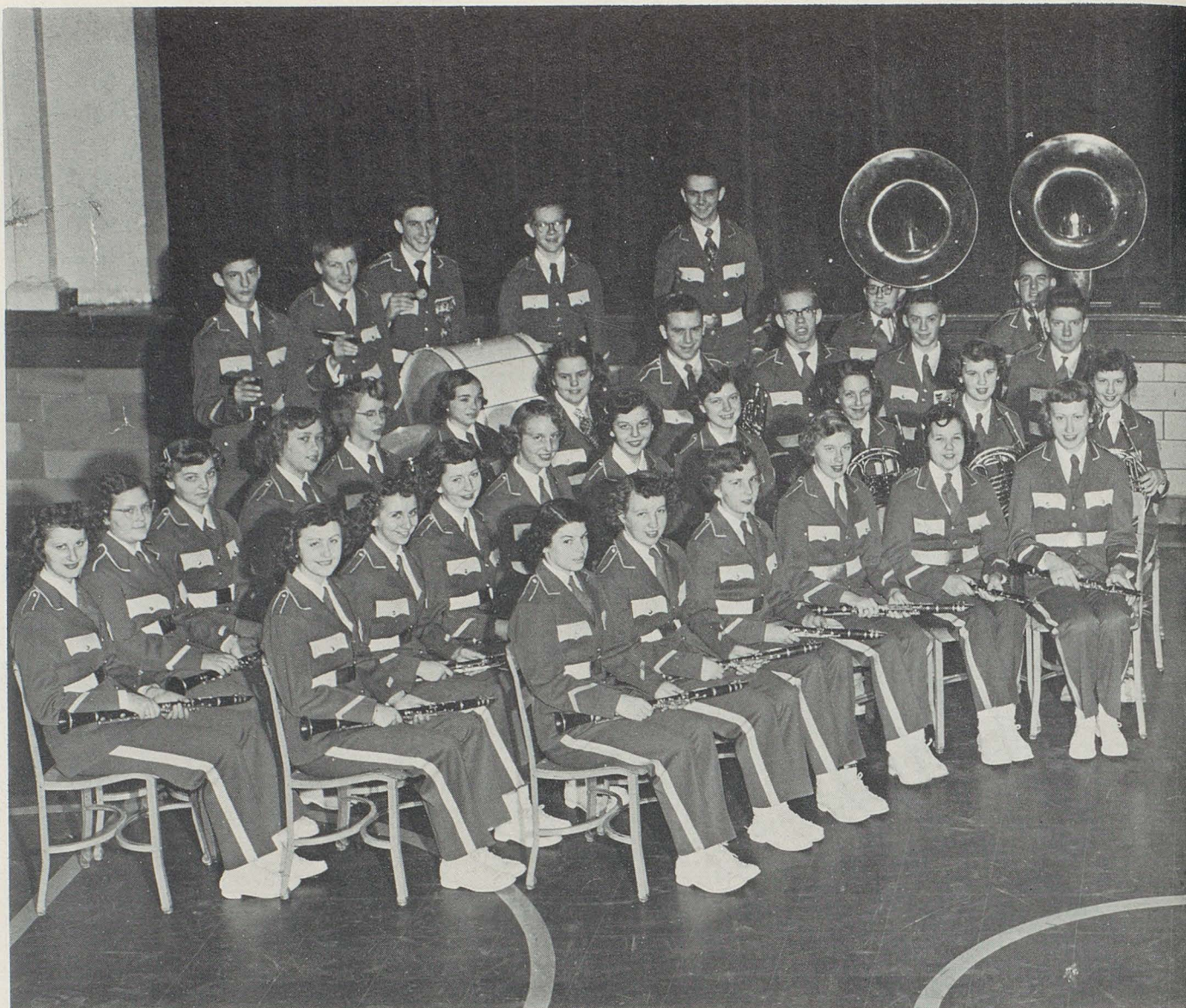
Selmer Instruments & Supplies
Selmer, Dallape and Paolo Soprani Accordions

PHONE 2-6907

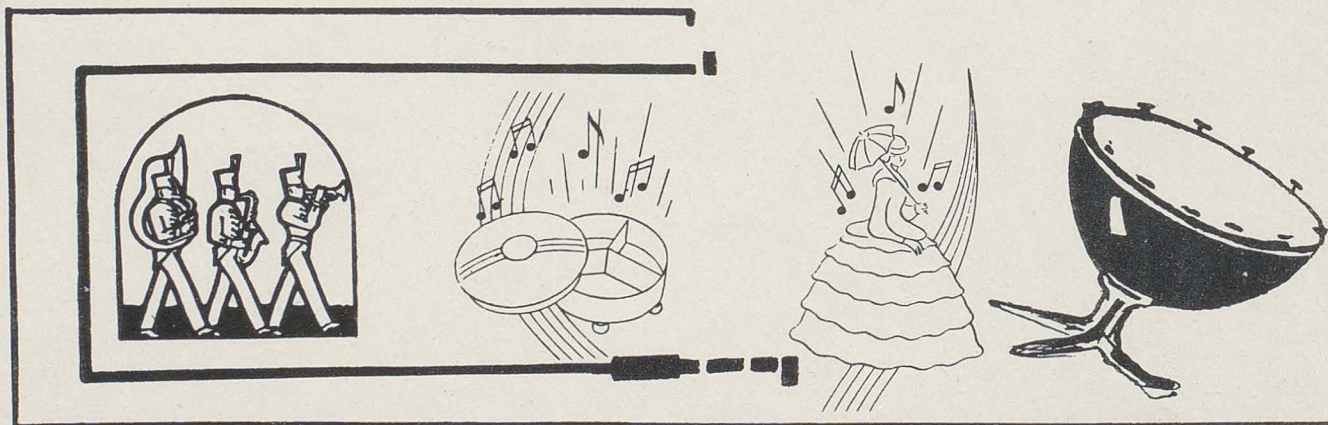


MUSIC





This past year the band has taken part in many activities. This fall we marched at the football preview at Massillon and the band preview at North Canton. We put on half time performances for most of our football games. The concert band played their three annual concerts and held a band clinic at our school on which we played a short concert. To many of us, the band has been an important part of our school life which we shall never forget.

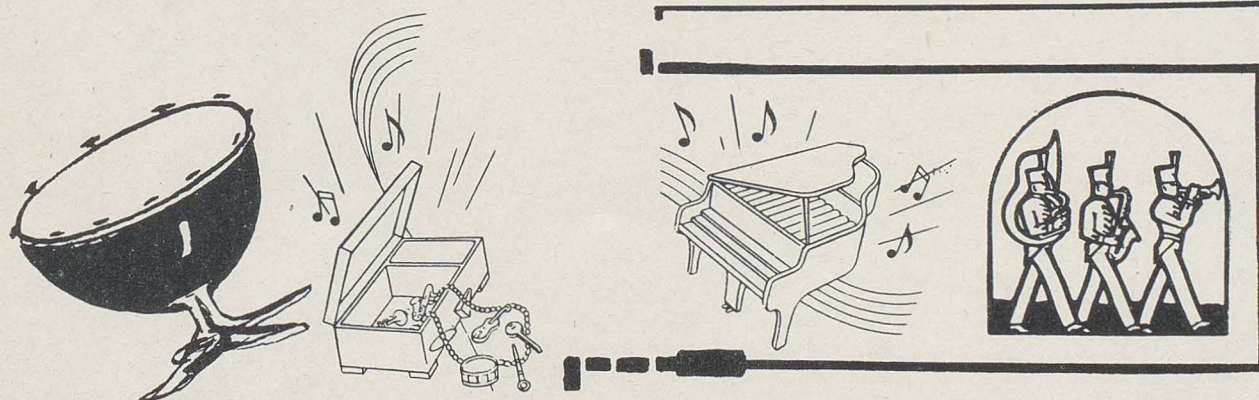


Compliments of William A. Wagner



We the senior members of the band wish to express our sincere appreciation for the untiring efforts of our director and friend Mr. Puffenberger. We also wish to express our appreciation to the younger members of the band who helped to make our final year such a success.

We wish next year's band the best of luck in all their undertakings.



Compliments of Don H. McMillen

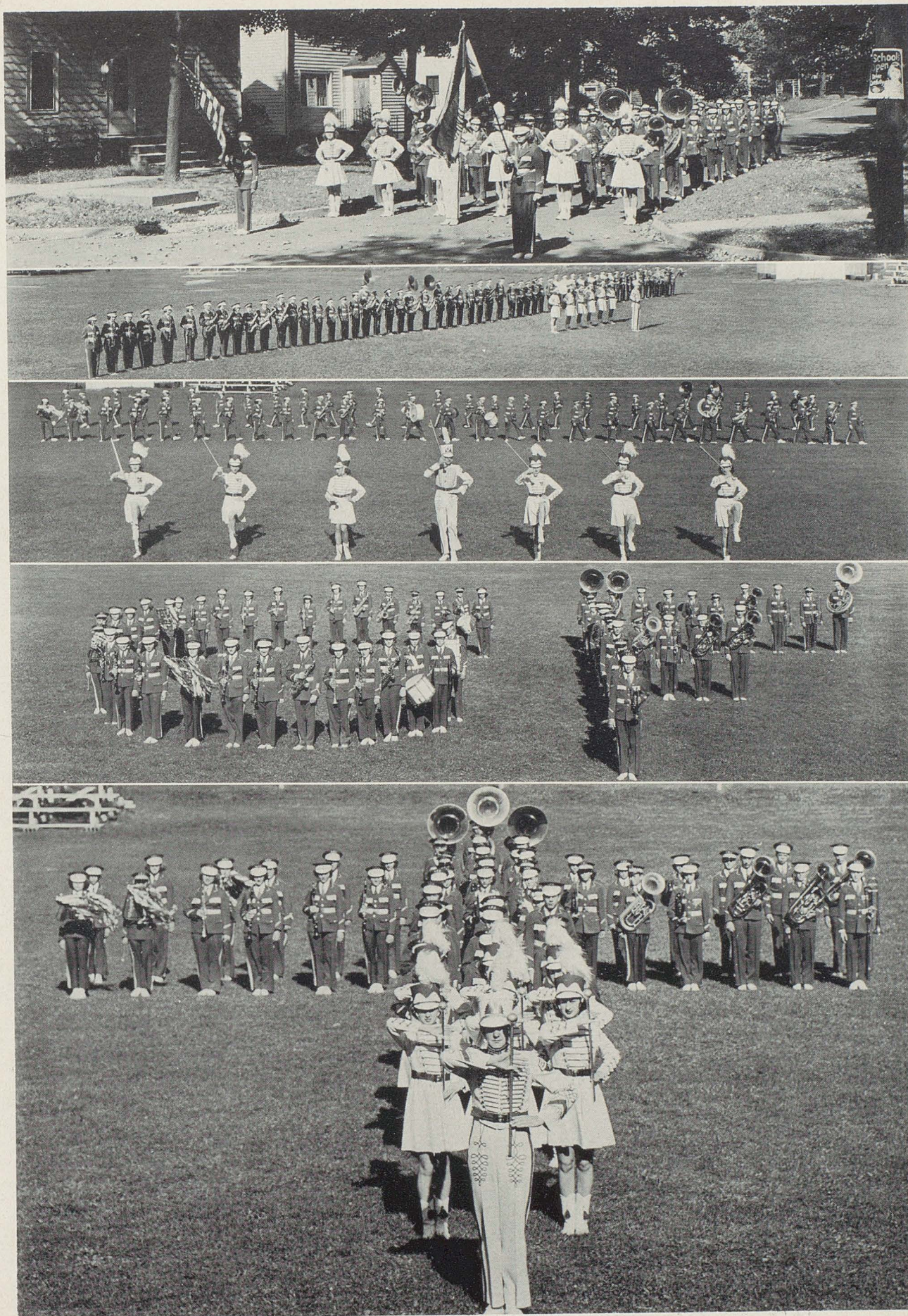


The school is very proud of its Glee Club this year. It has increased considerably, and under Mr. Puffenberger's direction, they sang on the Christmas program, the February Band Concert, and at Baccalaureate.

The orchestra has also been very active this year. We have played at several school dances, the Junior and Senior plays, and we will play for Commencement.



Compliments of R. G. Carver

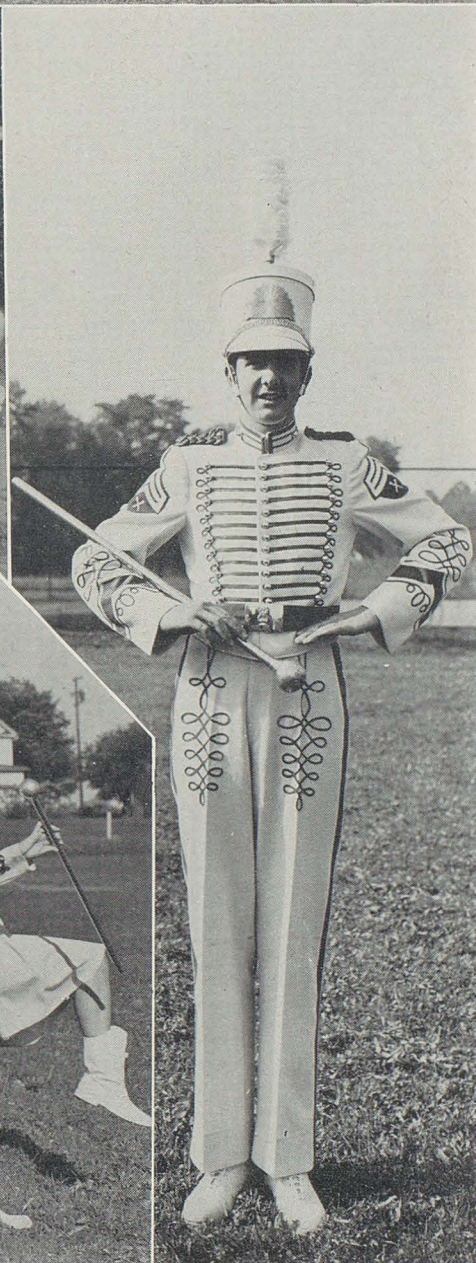
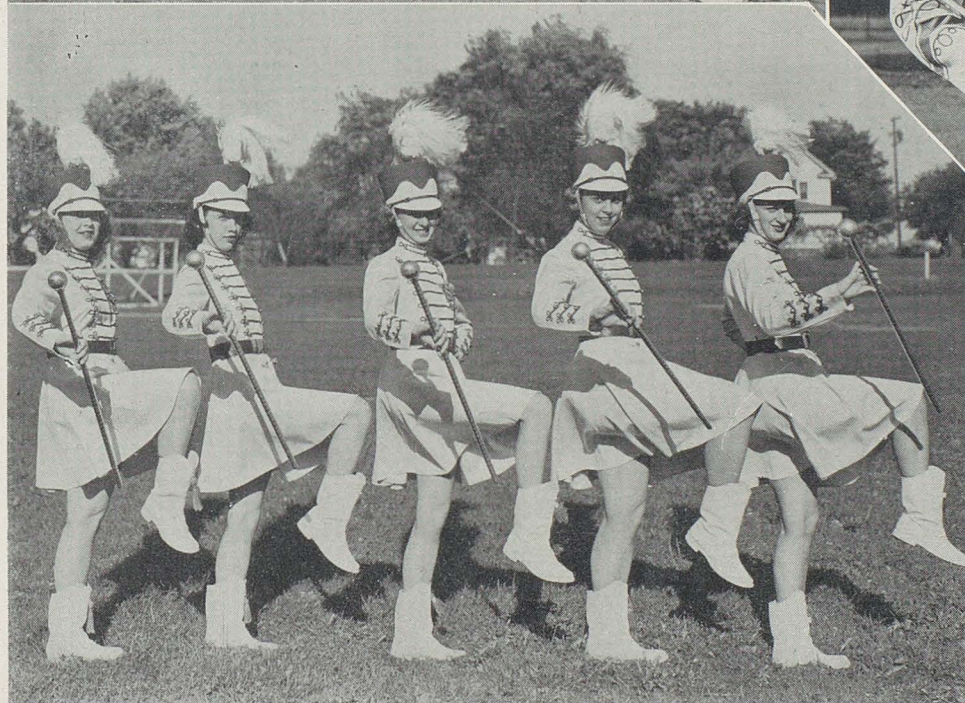
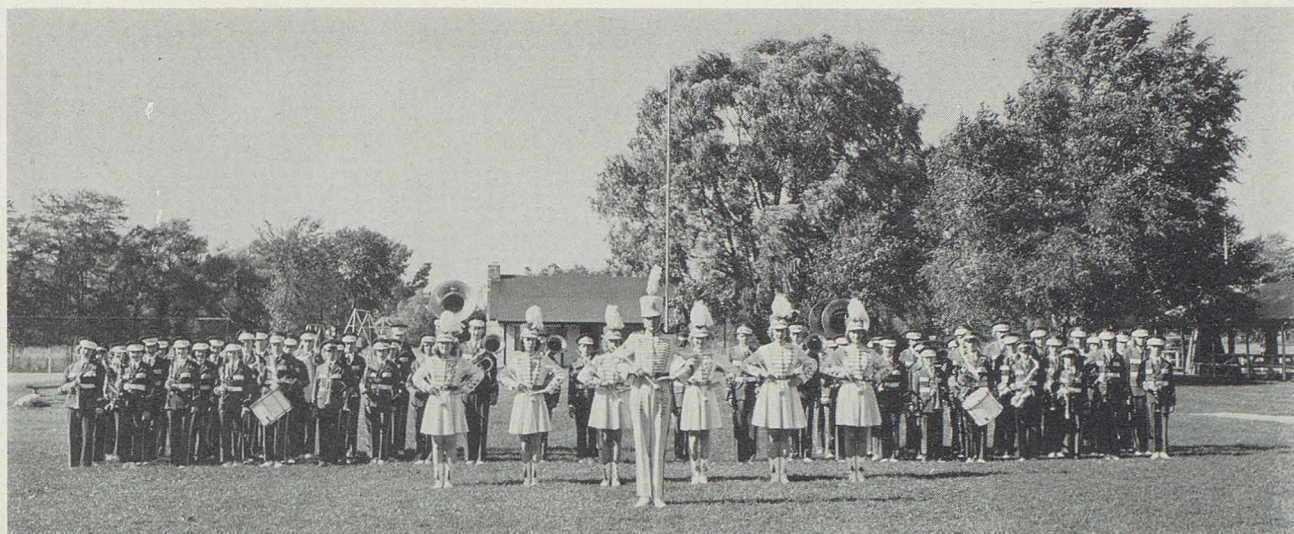


Compliments of B & M Grill

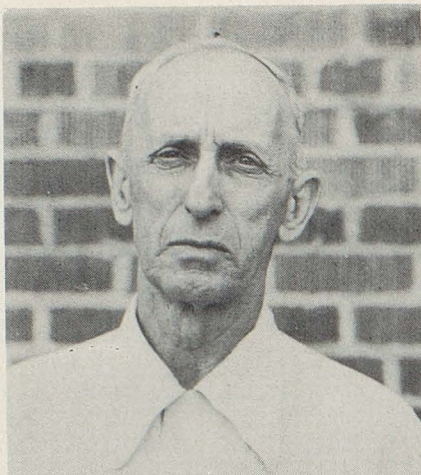


Band Seniors

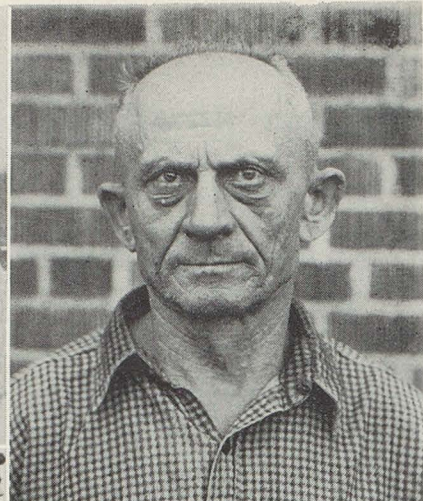




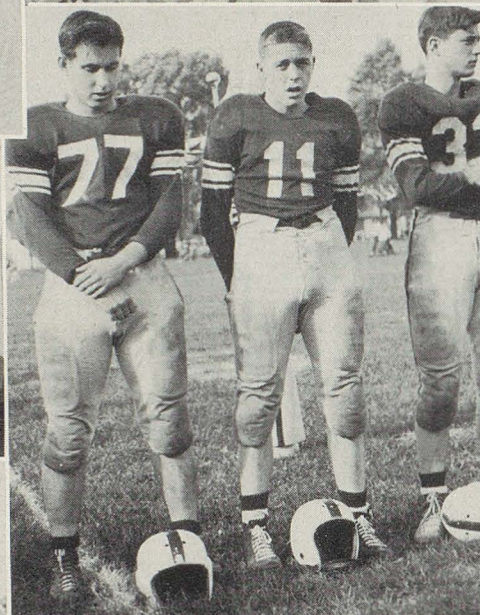
Compliments of Blank Coal Company



Mr. Haggerty
High School Custodian

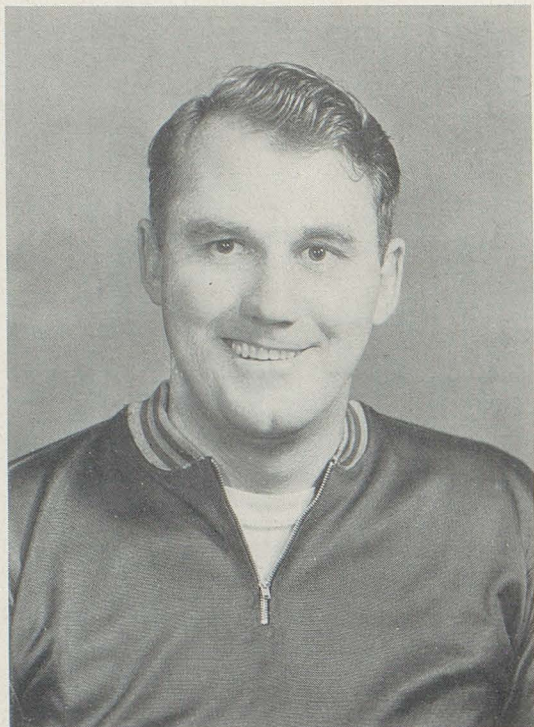


Mr. Toth
Grade School Custodian

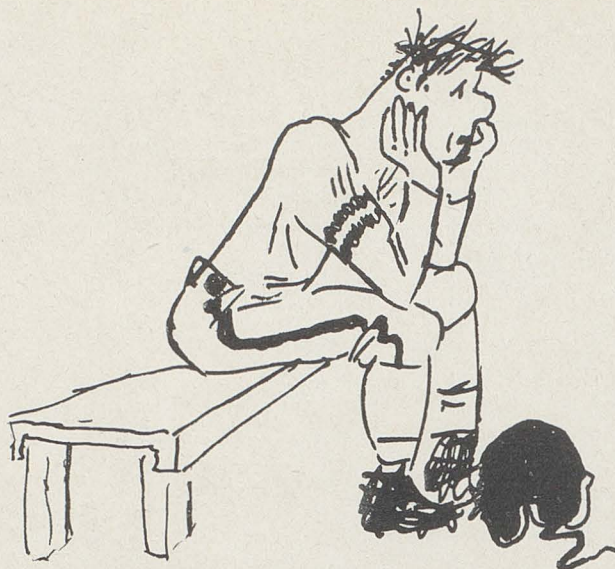


SPORTS

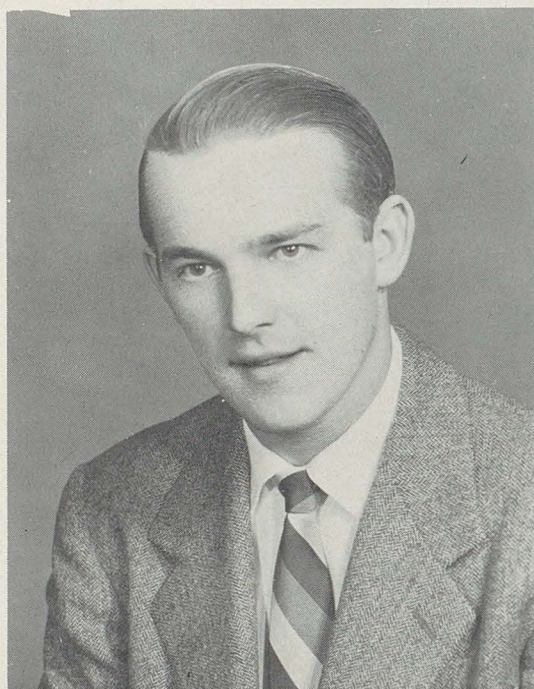




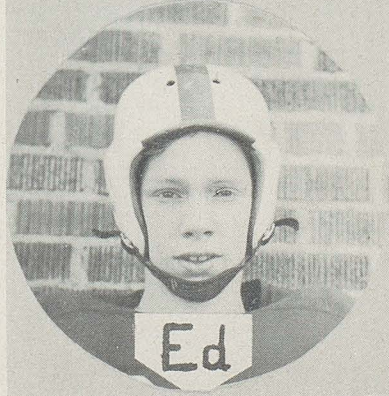
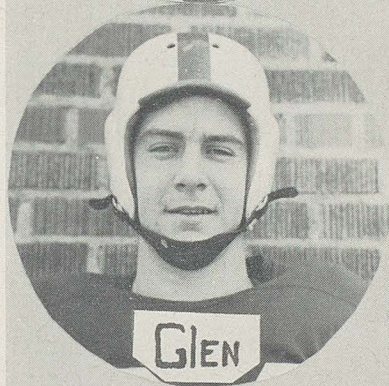
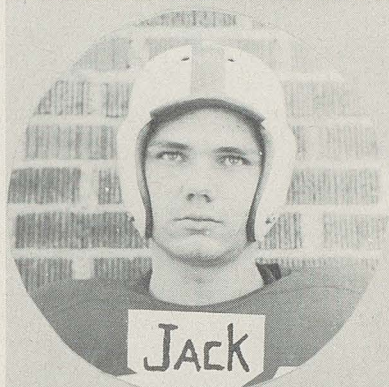
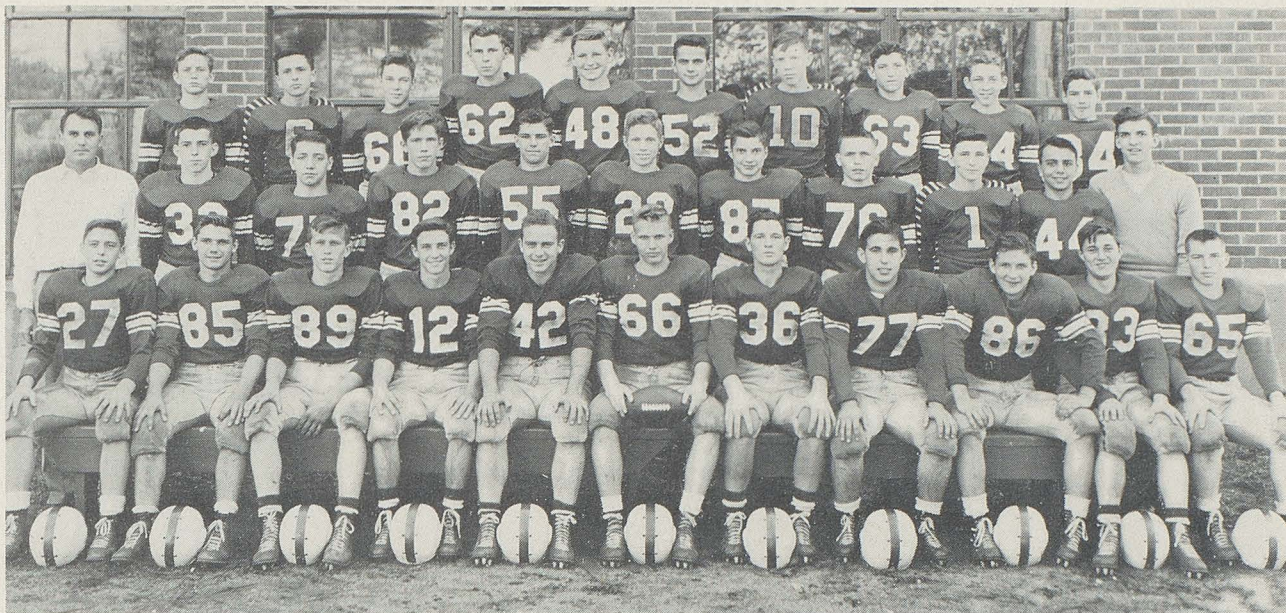
MR. KETTER
Coach



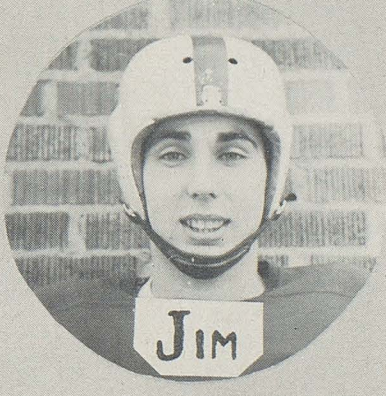
MR. ECKART
Assistant Football Coach

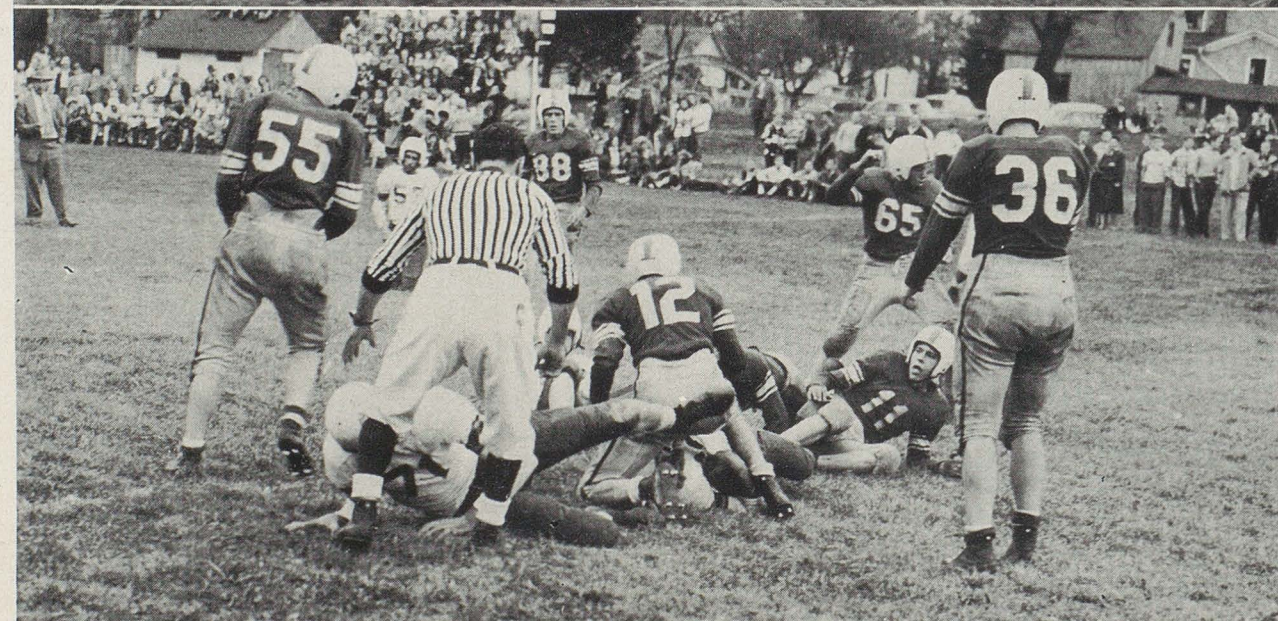
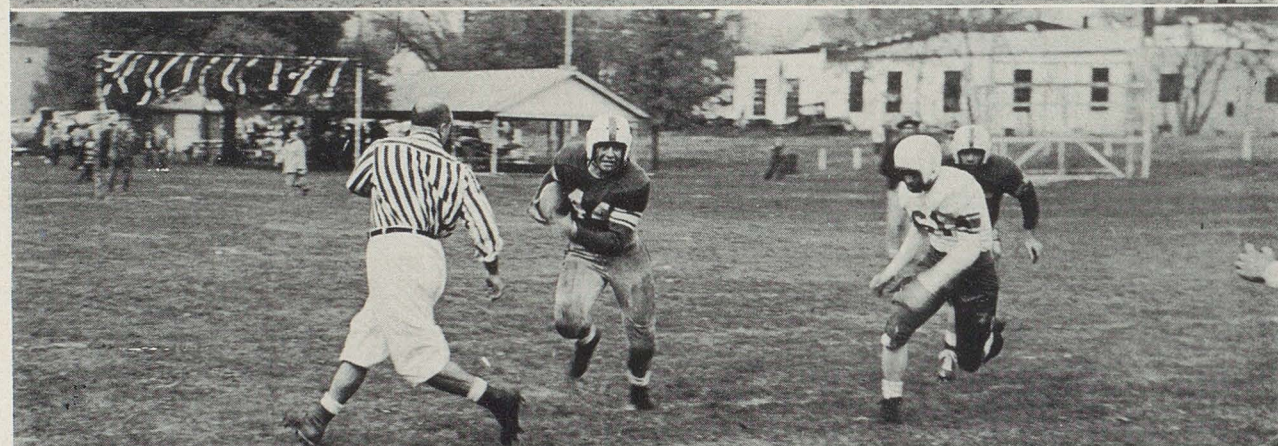
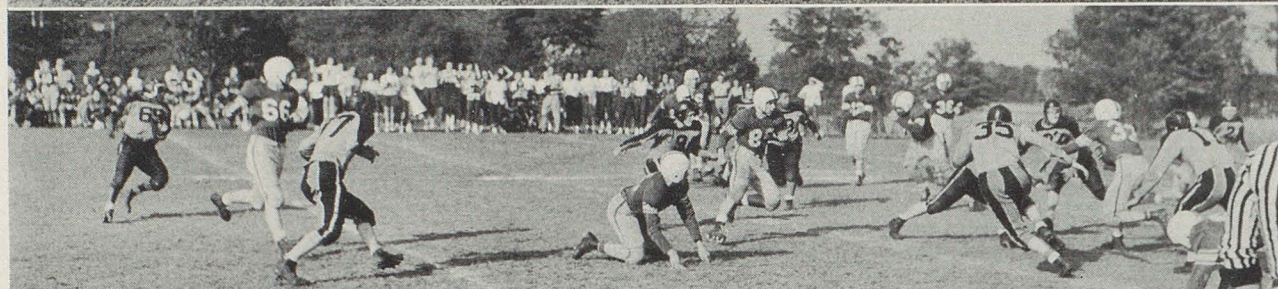
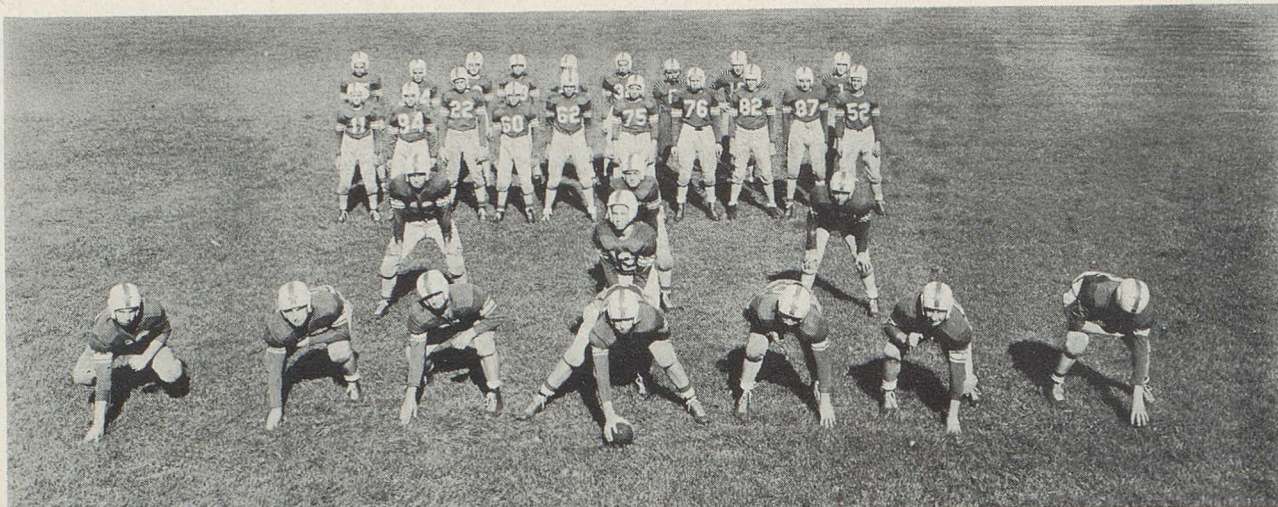


Compliments of Ray Remark

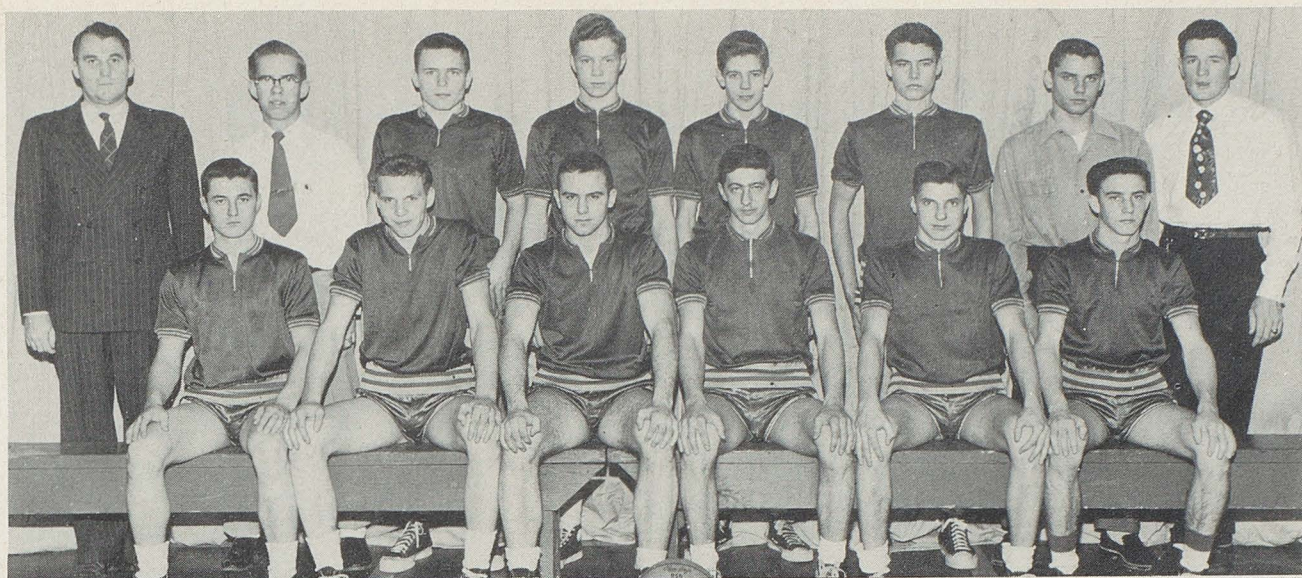


FOOTBALL SCHEDULE 1951		
	We	They
Sept. 14		
Manchester	6	18
Sept. 21		
Waynesburg	6	63
Sept. 28		
Middlebranch	7	39
Oct. 5		
Marlboro	6	12
Oct. 12		
East Canton	42	13
Oct. 18		
St. Joseph	0	20
Oct. 26		
Jackson	7	12
Nov. 2		
Navarre	21	7
Nov. 10		
East Sparta	44	6





Compliments of Wayne Hardgrove



BASKETBALL SCHEDULE 1951-1952

		They	We
Nov. 30	Brewster	43	56
Dec. 1	Jackson	40	34
Dec. 5	Greensburg	38	43
Dec. 7	Middlebranch	48	46
Dec. 8	Dover St. Joe	54	58
Dec. 15	Beach City	48	45
Jan. 11	Uniontown	40	33
Jan. 12	Waynesburg	67	42
Jan. 18	Magnolia	56	60
Jan. 22	Marlboro	38	44
Jan. 25	Navarre	50	38
Jan. 26	Hartville	52	37
Feb. 1	Greentown	48	63
Feb. 2	East Sparta	50	55
Feb. 8	East Canton	36	48
Feb. 9	Marlboro	38	58



Glen



Don



Ed



Bill



John

Compliments of Kenneth Markham



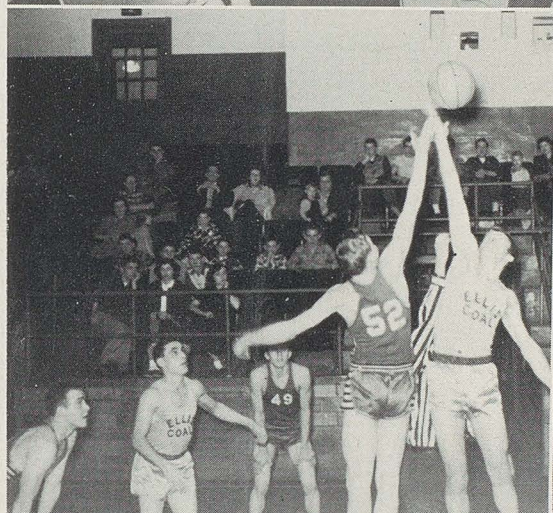
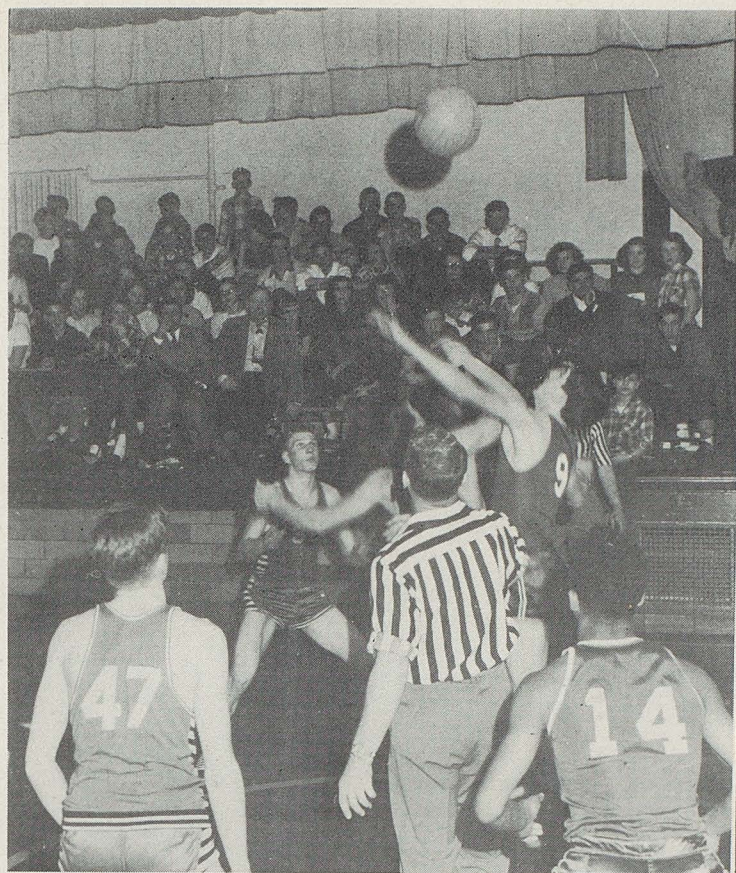
RESERVE BASKETBALL TEAM



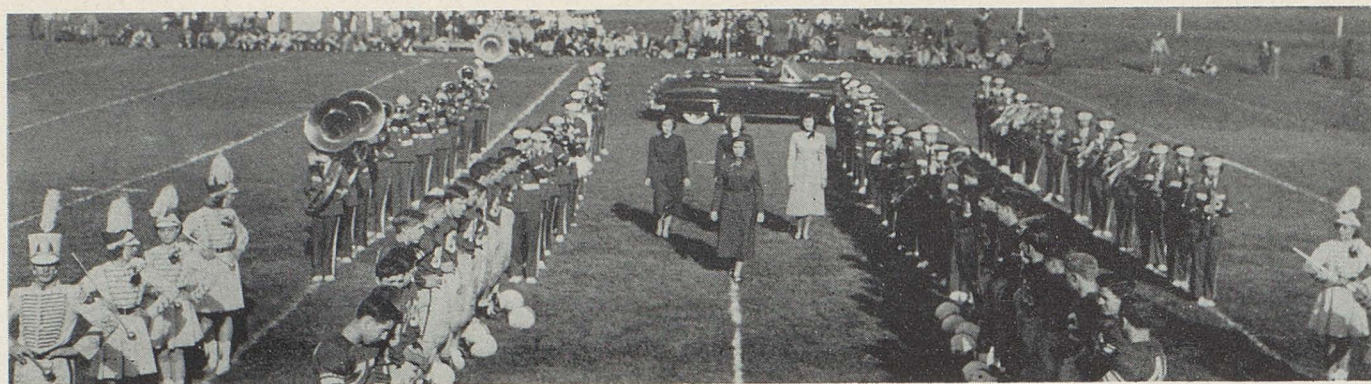
TOURNAMENT TEAM



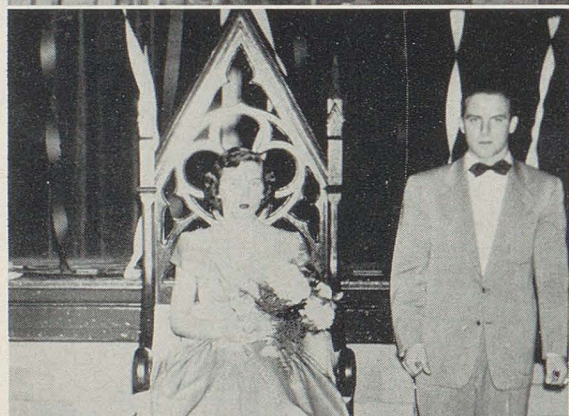
Compliments of R. E. Hardgrove



Compliments of Max Rupe



HOME COMING



Compliments of Fulton Flower Shop

Compliments of

DAVIS STUDIO



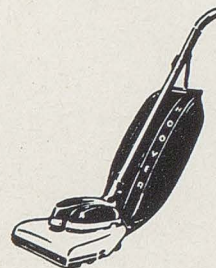
Compliments
of
Massillon Merchants



You'll be happier



with a HOOVER



THE CERES SUPPLY CO., INC.

ROBERT R. HESS AND SON

Manufacturers of

CERES FEEDS

HIGHER QUALITY FEEDS FOR LIVESTOCK AND POULTRY

FARM SUPPLIES

Carload Shippers

and

Receiver of Grain

and

Ingredients

Tremont Ave. W. at Viaduct

MASSILLON, OHIO

Phone 4121

Compliments of

**MASSILLON INDEPENDENT
RETAIL JEWELERS**

GLENN P. HECKERT

SUTTER'S JEWELER

J. L. FROMHOLTZ

C. J. DUNCAN

PITCOCK and WAGNER, Inc.

Compliments of

**Tremco Manufacturing
Company**

CLEVELAND, OHIO

*Mastic Specialties, Paints, Enamels,
Protective Coatings for Maintenance
and Construction*

Mr. C. F. Murphy

Box 221 North Canton, Ohio
Phone 9379

Congratulations

to

Class of 1952

**STANFORD
ELECTRIC CO.**

WORTH C. MYERS CO.

Your Store of Quality and Reliability

- FINE FURNITURE
- CARPETING
- TELEVISION
- FRIGIDAIRE APPLIANCES
- PIANOS

Open Evenings

965 Cleveland Ave. N.
CANTON, OHIO

The Sanitary Laundry and Dry Cleaning

421 First Street, N. E. Massillon, Ohio

Plenty of Parking Space

Drive in off the street
to our front door

One block south of
St. Mary's Church

MYERS SPORT SHOP

Fishing Hunting and Athletic Supplies

37 Erie Street N.

SHELL SERVICE STATION

Glenn Heller, *Prop.*

Gas, Oils, Batteries, Tires

Corner State Routes 93 and 21

The Exchange Bank Co.

DEPOSITS INSURED

Canal Fulton, Ohio

Dial 2356

Paul R. Swigart
Funeral Director

Invalid Car Service

Monuments

Rex Typewriter Co.

Adding Machine and Typewriter Sales and Service

332 Erie St. S.
MASSILLON, OHIO

ROBERT'S JEWELRY

Canal Fulton, Ohio

Starlight Diamonds

Elgin — Gruen — Bulova Watches

Phone 2157

LEY BROS. TURKEY FARM

OHIO TENDER GROWN TURKEY'S

Phone

2712

Canal Fulton, Ohio

Compliments of

Edward Steiner

COAL-BUILDING SUPPLIES

CANAL FULTON, OHIO

PHONE 2319

BOX 206

Compliments of

Western Auto Associate Store

E. W. HARRIMAN, OWNER

Canal Fulton, Ohio

BEST — WISHES

To The Class of 1952

**YOUR WESTINGHOUSE STORE
YOUR SPORTING GOODS STORE
YOUR ZANDER'S AND RUSS' HARDWARE**

**STARK COUNTY'S
ONLY DRIVE-IN HARDWARE**

CANAL FULTON

PHONE 2397

**W. E. GILCHER
LUMBER COMPANY**

Mule Hide Roofing

**Lumber • Sash • Doors
Millwork**

West of B & O Station

**PHONE
RES. 2256
BUS. 2337**

Compliments of

THE OBERLIN DAIRY

Pasteurized Dairy Products

"QUALITY SERVES YOU BEST"

Phone Massillon 4666

308 20th St. N. W.

Compliments
of
Canal Castings Company

ALUMINUM AND BRASS CASTINGS

Canal Fulton, Ohio

Compliments
**COMMUNITY
STORE**

**Compliments
of
THE
COMMERCIAL PHOTOLITH
CO.**

137 First Street, N. E.
Massillon, Ohio

CONGRATULATIONS
to the Class
of 1952

BLOOMFIELD CHEVROLET

SOUTH CANAL STREET

Canal Fulton's Most Modern Auto Service

A—Always

B—Buy

C—Chevrolet

H. L. FRIEND MOTOR SALES

CADILLAC & OLDSMOBILE

306 ERIE STREET N.

MASSILLON, OHIO

PHONE 7635

Compliments of
STONE BROS. Clothes

Large Selection of Suits for the Graduates
Sport Slacks — Jackets
Coats — Furnishings
104 Lincoln Way W. Massillon, O.

W. B. MYERS
Ford Cars and Trucks
PHONE 2333

ELMER NOTCH
Refrigeration and Electrical
Service
Commercial and Domestic
PHONE 2397

Compliments of
DeLuxe Dry Cleaning
55 Forest Ave., S. E.

WHY TAKE CHANCES
in not belonging to the motor car
owners guardian.
Cost only \$10.00 per year
The Massillon Automobile Club

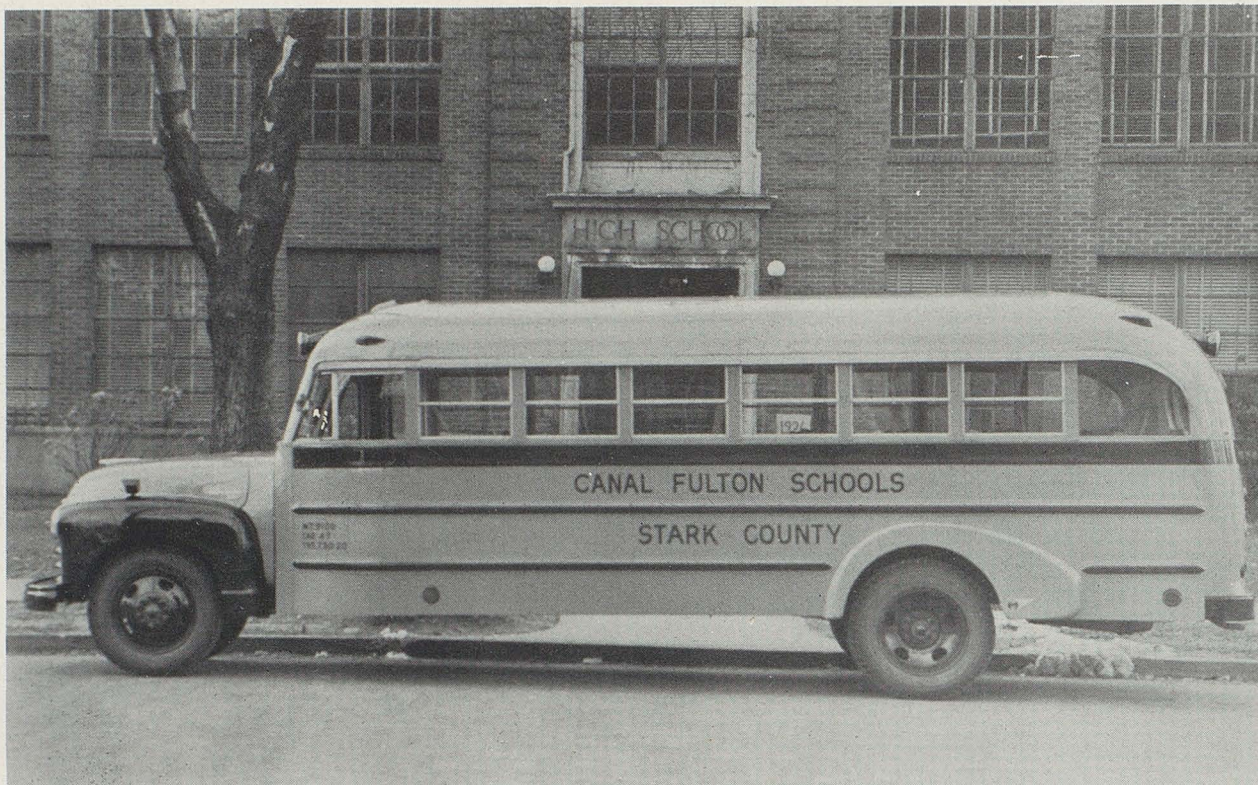
Compliments of
W. M. Kyser Sales Co.

Compliments of
MIKE'S MARKET
LOCATED ON RT. 21
2½ Miles North of Canal Fulton

Compliments of
EDNA'S BEAUTY SHOPPE
AND
EARL'S BARBER SHOP
Phone 2212
CANAL FULTON, O.

H. C. ALLISON
Water Well Drilling
Canal Fulton, Ohio
PHONE 2437

The Koons Wallpaper Co.
Wallpaper - Window Shades
Linoleum
55 N. Erie — Dial 4434



Compliments of Raymond Ries and Richard Simmons

Congratulations to
Class of 1952
E. E. PARKER MOTOR CO.
De Soto - Plymouth

Compliments of
TERRY AUTO SALES
 Massillon's Largest
 Used Car Dealer
Over 3500 Satisfied Customers
 Cor. 5th and Lincoln Way E.
 Open 9 A. M. To 9 P. M.
 PHONE 24151

Compliments of
GILCHER LUMBER CO.

•

BOB SWIGART

Manager

Phone 2222

*Compliments
of*
Florian P. Cuthbert, M.D.

SCHALMO IMPLEMENT

**McCormick - Deering
Tractors and Implements**



Refrigeration

New Idea Spreaders

•

Repairs
Fence and Farm Hardware

*Best Wishes To the Class of
1952*
**MIDLAKE DRY
CLEANING COMPANY**
Nimisila Road
East of Traffic Light
Manchester, Ohio

Compliments of

MILROSE DRIVE-IN

Curb and Table Service

*Located on Route 21
3 1/2 Miles North of Canal Fulton*

ED PATRIS, MANAGER

Compliments of

SUPERIOR PROVISION CO.

Phone 2-1591
MASSILLON, OHIO

*New, Used and Reconditioned
We Rent Sell and Repair All Makes*



BENSON TYPEWRITER CO.

336 — 4th Street N. W.
Canton, Ohio

BEST WISHES
to the
CLASS
of
1952



**THE
STERN AND MANN
COMPANY**

Canton, Ohio

Compliments of

C. R. KURTZ

GAS AND OIL HEATING

The Evening Independent

Your Newspaper Lights the Way
For Freedom

L. G. BALFOUR COMPANY

Known Wherever there are
Schools and Colleges

Harold C. Jones,
Representative

R. D. No. 2, Medina, Ohio
Phone — Sharon Center 9282

Compliments

of

CLAYS PARK

**Congratulations
to
CLASS OF 1952**

FINEFROCK BROS.

**Best Wishes to the
Class of
"52"**

STARK GLASS, INC.

Billherm Science Studies, Inc.
Stage Curtains and Draperies
NORTH CANTON, OHIO

John D. Hahn
Furnace and Metal Work
Slate Roofs Repaired
PHONE 2304

*Congratulations
to*
The Class of 1952
Sterling Bakery

Compliments of
Kendall's Barber Shop

New Venice Gardens
Italian Spaghetti and Raviola
716 Lincoln Way East
MASSILLON, OHIO

Compliments of
Morrison Music Service
Band Instruments
Phone 7560 — 220 Lincoln Way E.

The Modern Home is all Electric
Ohio Edison Co.
Massillon, Ohio

Compliments of a Friend

Joe Cox
Representing Herff Jones Co.
Class Rings and Invitations
Club Pins — Trophies — Medals
AKRON, OHIO
Phone 2543 — Box 5225

Compliments of
Hofsteter Bros.
DON'T FORGET!
We Buy Furs, Hides

*Congratulations to the
Class of
1952*
THE ELMER R. STAUDT AGENCY

**MIMEOGRAPH
Sales & Service**
Ditto Mimeographs,
Adding Machines
Elliott Addressing Machines
209 3rd St., N. W.

*Best Wishes to
Graduating Class of
1952*
THE IRWIN STEEL CO.

*Compliments
of*
M. H. MARTIN
Bell and Howell
8 & 16 mm Motion Picture Equipment
Public Address
Recording and Film Strip Equipment

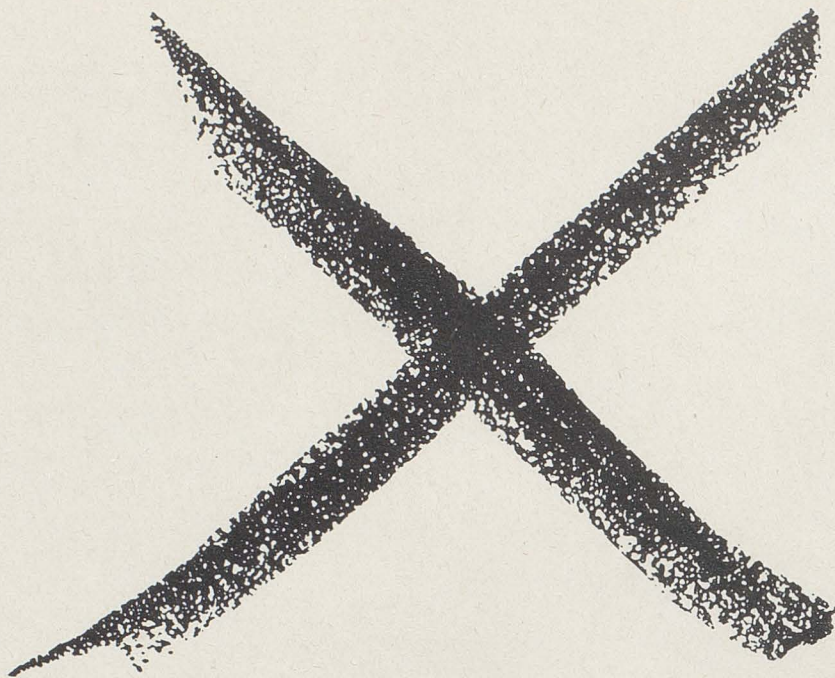
HART'S
Frozen Food Locker
and
Grocery

1952 Fultonian Covers
Manufactured by
**The Mueller Art Cover &
Binding Company**

Pauline Schembechler
Compliments of
Manchester Beauty Shop

Dumont Athletic Co.
134 - 2nd St., S. E.
CANTON, OHIO
Shoes — Jackets

J. H. Brubaker
Appliance Service
Specialized Repairs on
Washing Machines, Sweepers,
Electric Ranges, Saw Filing
CANAL FULTON 2490
1952



This is America's top secret!

When an American marks his X on a ballot, he can be certain of one thing. Nobody knows for whom or what he has voted. It's his secret. No one can influence or coerce him when he votes—and no one can penalize him for how he voted.

The secret ballot is one of the big secrets of a strong America. People who can vote without fear or reprisal offer little opportunity for would-be Hitlers and Stalins to take over. And while dishonesty can creep into government, the secret ballot is the one sure way honest citizens can stamp it out.

Communists would be delighted to see the secret ballot eliminated. Their kind of government doesn't succeed unless they can *tell* you how to vote. And after all, communism offers only *one* party to vote for!

We in America must make many sacrifices to combat Communist ambition. But one thing we must never sacrifice is the priceless right to think and vote according to our consciences. Nor must we ever give up any of the rights that keep this country free and independent.

TIMKEN

TRADE-MARK REG. U. S. PAT. OFF.

THE TIMKEN ROLLER BEARING COMPANY

"The right to work shall not be abridged or made impotent"

GRADES



GRADE SCHOOL FACULTY



JOSIAH MAXWELL



VIRGIL SUMMERS



LAVINA MOSGROVE



CORA CARR
Principal



LAVONDA CORLEY



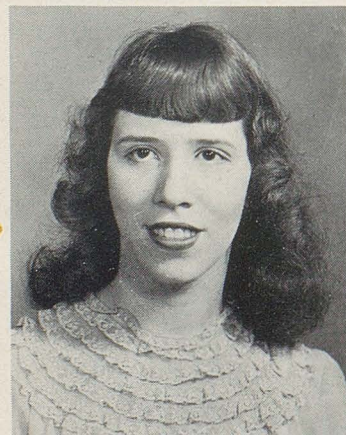
ETHEL KNIGHT



WILLIAM COGAN



DOROTHY SUMMERS



BERNICE COGAN



BETTY HANKS



KINDERGARTEN

Front Row: Kenny Cook, Tommy Remark, Mike Durinsky, Stan Miller, Don Gesaman, Andy Phillips, Sheila Rhoades, Denny Roach, Tommy Neidert, Tommy Richardson.
 Back Row: Betty Turley, Steve Root, Billy Lerch, Robie Clay, David McClay, Johnny Hoeft, Bobby Koenig, Judy Blatti, Eileen Frickie, Jimmy Grover, Pat Hanks, Mrs. Hanks.
 Absent: Mary Boland, Wanda Case, Sherry Swigart, Suzanne Thompson.



KINDERGARTEN

Front Row: Dick Chenevey, David Morris, Jane Brown, Timmy Gesaman, Nina Garman, Pat Ott, Tommy Hardgrove, Denny Stephan, Smoky Laughlin, Kathy Foster, Kenny Finefrock.
 Back Row: Merle Ferryman, Glenn Decker, Don Gesaman, Diana Lepley, Nancy Jolly, Keith Crawford, Minta Jean Lerch, Jimmy Darkow, Sandra Andrews, John Ruehling, Joan Fellmeth, Mrs. Hanks.
 Absent: Terry Amodio, Vera Rohe, Dale Lohr.



FIRST GRADE

Front Row: Diane Cullen, Allen Stanley, Linda Hiltbrand, Roger Mayes, Barbara Shook, Billy Goff, Linda Garrett, Jacqueline Roach, Ronnie Andrews, Sharon Brand, Mcry Nicholas, Karen Wittman, John White, Jack Park.
 Middle Row: Mrs. Mosgrove, Ronald Mansfield, Larry Stockert, Elizabeth Wood, Tommy Reid, Danny Klais, Bob Moke, Loren Witherow, Billy Lusk, Clifford Bachtel, Lois McMillen, Barbara Haynes, Mike Becker, Jerry Long.
 Back Row: Violet Reffner, Trudy Hopper, Marilyn Neidert, Jimmy Wheeler, Johnny Greene, Kenneth Tippel, Bobbie Ann Powell, Gregory Simmons, David Wagner, Kenny Martin, Denny Wittman, Gregory Chapman, Marie Bobb, Larry Becker, Mrs. Knight.
 Absent: Judy Reed.

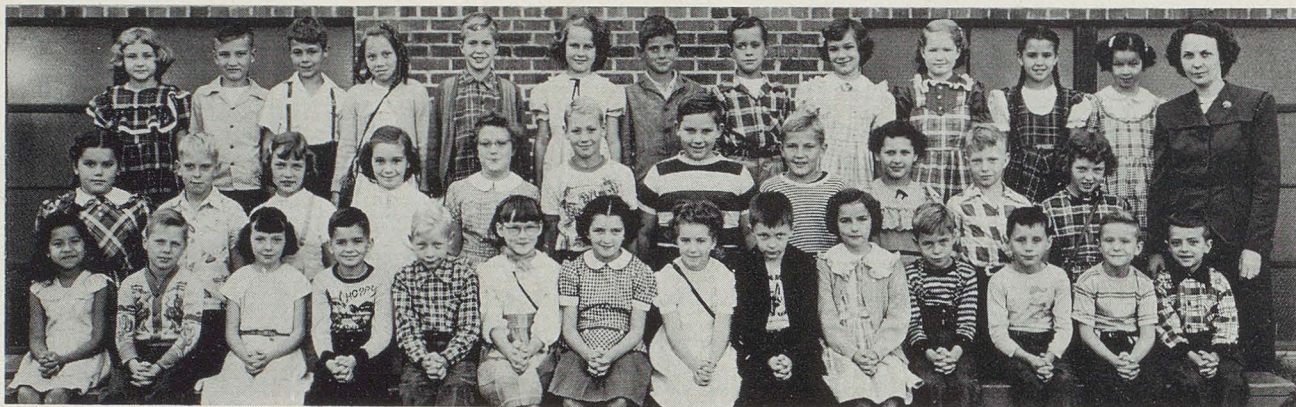


SECOND GRADE

Front Row: Dickie Myers, George Bobb, Marjorie Fischnick, Darlene Sexton, Kenny Tesch, Dickie White, Ellen Turly, Joyce Trigg, Paul Fox, Tana Hartman, Bobby White, Marcia Swigart, Marilyn Fischnick, Janet Park, Mary Jane Rowe.

Middle Row: Mrs. Mosgrove, Evelyn Hann, Judy Bogard, Annabel Hancock, Sarah Norris, Sandra Lowry, Gary Parker, Gary Johnson, Eugene Shuman, Lois Rupe, Shirley Ott, Charles Kraft, Ruth Ann Baughman, Mrs. Cogan.

Back Row: Terry Ketter, Tommy Finefrock, Dan Penchalk, Rosellen Smith, Aurelia Guzman, Neil Weygandt, Glenn, Garrett, Janet DeWalt, Charlene Waggoner, Beverly Geiger, Martha Jane Blachly, Wanda Weber, Patty Pedrotty.



THIRD GRADE

Front Row: Ramona Guzman, Robert Tesch, Marilyn Mann, Paul Ingraham, Tommy Baum, Diane Sherwood, Kathleen Young, Linda Goff, Gary Rhoades, Mary Lou Ketter, Donald Shearl, Randall Earhart, Allen Andrews, Edward Markham.

Middle Row: Marsha Roop, Danny Miller, Catherine Lusk, Mary Ries, Jean Klais, Larry Johnson, George Schuman, Newton Bogart, Peggy Wook, Gerald May, Florina Reichenbach, Mrs. Summers.

Back Row: Joyce Welsch, Robert Mathews, Harry Bobb, Mable Norris, Frank Browne, Trini Shonk, David Toppel, Robert Taylor, Barbara Phillips, Karen Kirkpatrick, Carolyn Hass, Pauline Dye.



FOURTH GRADE

Front Row: William Wittman, Raoul Helwig, Thomas Gesaman, Mary Ellen Weidner, James Waggoner, Doreen Cuthbert, Gary Hoeft, James Fellmeth, Duane Weygandt, Bruce Gesaman, Ruth Ann Ingraham, John Kistner, Robert Wagner, Kenneth McCullough, Carol Becker, Sandra Trigg.

Middle Row: Norman Tippell, Thomas Nicholas, Helen Stockert, Denny Smail, Norene Browne, Betty Hammock, Marion Fricke, Walden Earhart, Charles Hass, Thomas Gindlesberger, Judy Snyder, William Greenawalt, Mary Alice Moore.

Back Row: Mrs. Corley, Cora Boser, James Just, Linda Nicholas, Sandra Hammock, Gary Becker, Ellen Schimke, Vernon Siber, Alex Markus, Donald Decker, Sandra Franklin, Rita Hann, Ralph Blachly, Betty Fudge, Marilyn Greene.

Absent: Ervin Reed, Ronald Williams, Ronald Neidert.

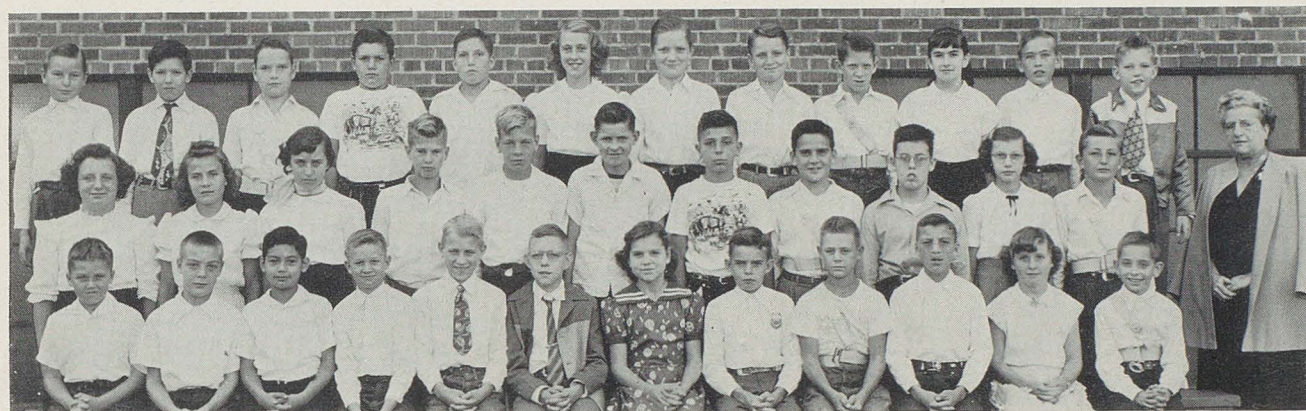


FIFTH GRADE

Front Row: Raymond Ferryman, Robert Garrett, Phyllis Baum, Judy Mann, Wanda Lee Hofsteter, Richard Schmachtenberger, Judy Becker, Kenny Waggoner, Glen Weber, Georgia Ketter, Barbara Johnson, Jennie Hancock, Karen Ellis, Don Miller.

Middle Row: Luars Jurjans, Charlotte Rowe, Robert Woodall, Roland Ries, Judy Schwartz, Jane Reid, Dorothy Parker, Gerald Hammock, Carole Rupe, Jacqueline Little, Carson Ripley, William Fischnick, Thomas Otto, Thomas Norris.

Back Row: Mr. Cogan, Richard Dye, Clifford Mansfield, William Swigart, Linda Suderow, Harry Taylor, David Nichols, Marion Weygandt, Linda Ott, James Finefrock, Elda Knight, John Tipple, Nyda Nofitsinger, Judy Just, Phillip Travis.



SIXTH GRADE

Front Row: Lowell Gesamen, Robert Reffner, Miguel Guzman, Gary Leaver, David Queen, Kenneth Sick, Nancy Webb, Herbert Blachly, Buddy Hartman, Paul Goerke, Joyce Ries, Roger Fox.

Middle Row: Carol Fellmeth, Ruth Parker, Elinor Ruehling, Bradley Trigg, Randall Woodall, Ray Hammock, Jim Selch, Richard Flake, Joel Schimke, Rita Volk, Rolland Ferryman, Mrs. Carr.

Back Row: Larry Notch, Lyle Kirkpatrick, Kenneth Fricke, Earl Mink, Jerry Dumcan, Judy Semelsberger, John Wise, David McCartney, Bill Simmons, Janet Cormany, Ronald Hague, Carl Smith.



SEVENTH GRADE

Front Row: Roy Ray, Virginia Fox, Robert Mansfield, Jackie Shonk, Carmen Reffner, Sandra Neal, Carol Ott, Ada Jean Baum, Richard Gindlesberger, Tommy Reighart, Junior Weber.

Middle Row: Mr. Maxwell, Ann Fletcher, Richard Swisher, Robert Gindlesberger, Rita Mathews, John Gesaman, Lois Stockert, Lois Hoover, Marie LeBerth, Rasma Jurjans, Richard Norris, Jerry Nichols.

Back Row: Richard Stoughton, Sue Ann Cuthbert, Judi Lynn Moke, Sharon Gilcher, Mary Ann Decker, Alice Markus, Robert Blachly, Rosella Hartman, Elizabeth Siber, Judith Fudge, Terry Kroeger.



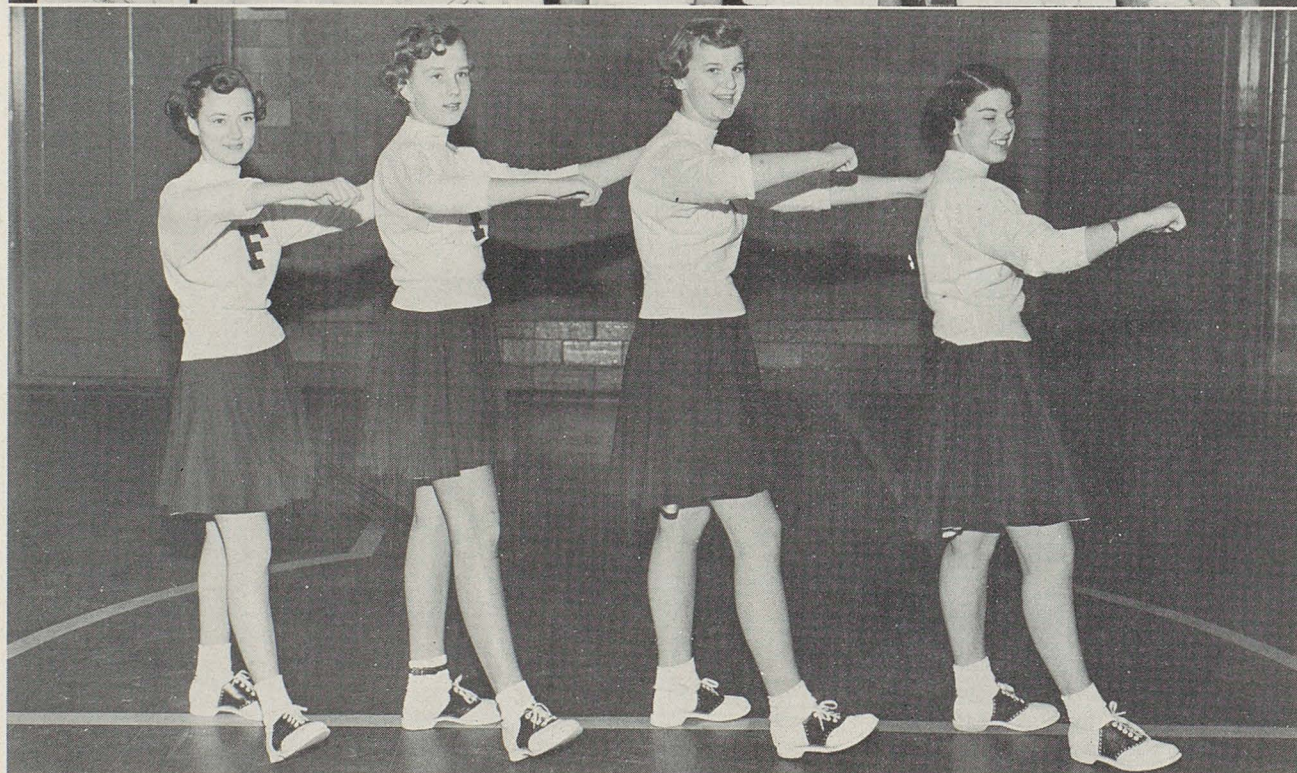
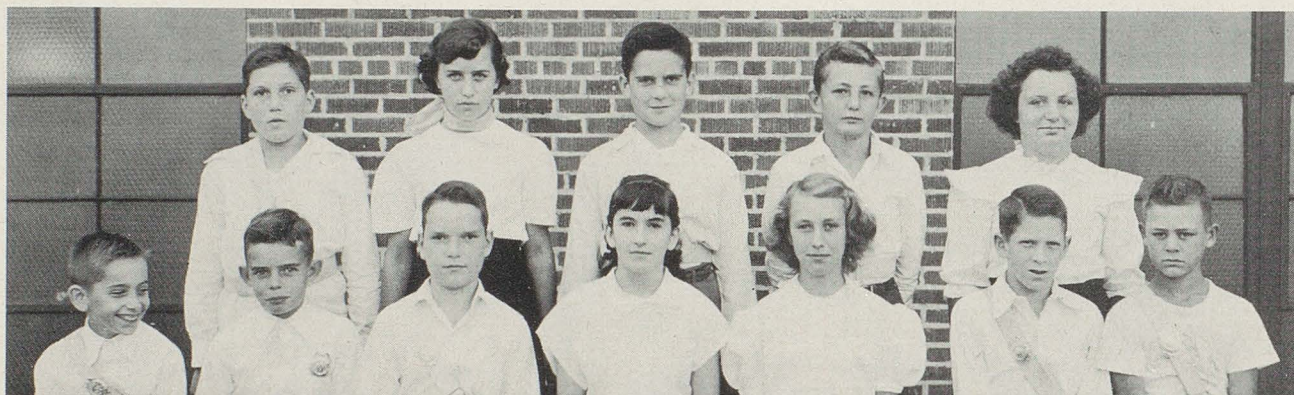
EIGHTH GRADE

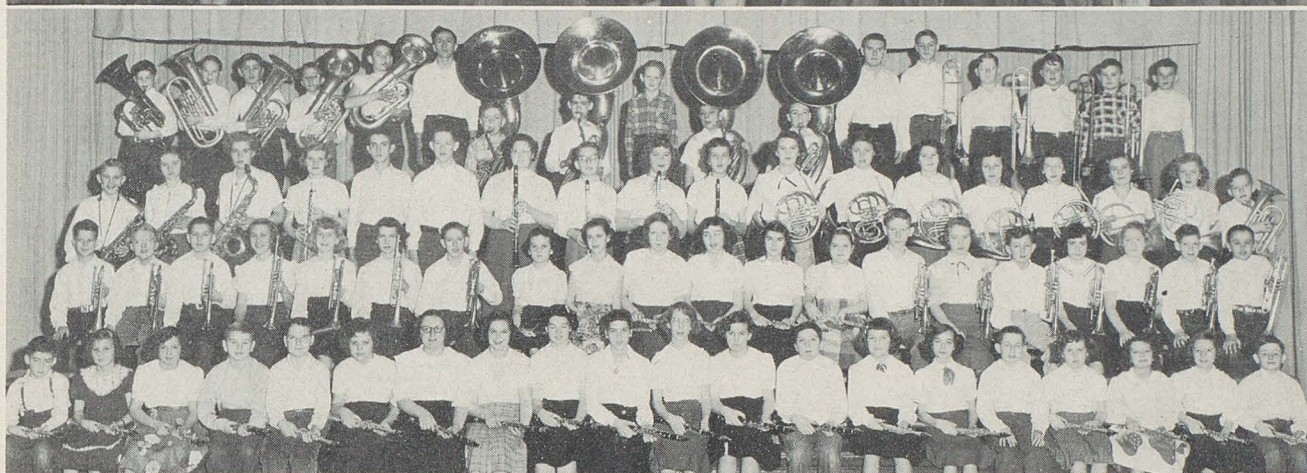
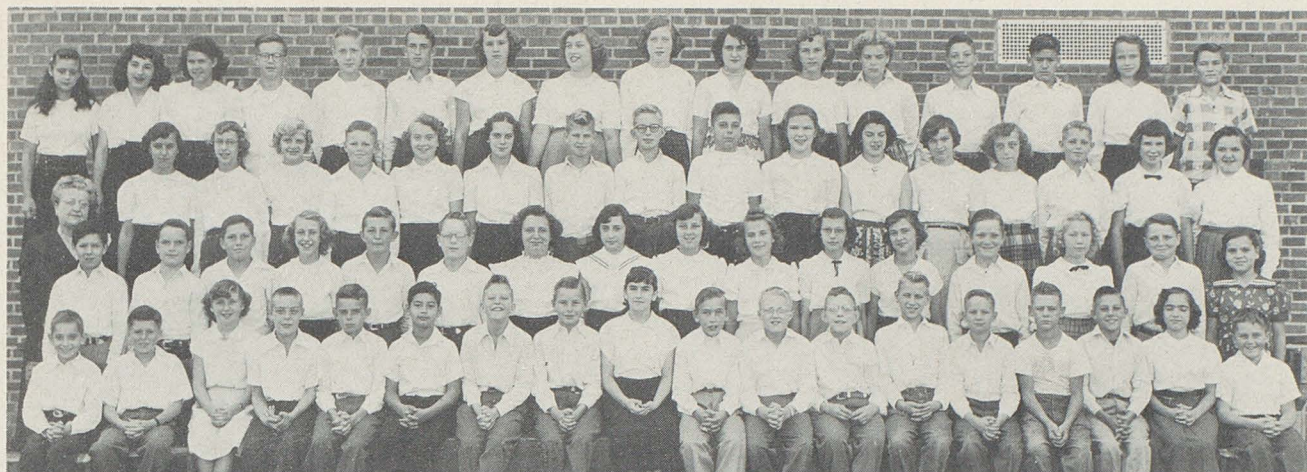
Front Row: Carol Miller, Gary Mathews, Gerald Semelsberger, David Duncan, John Just, Doris DeWalt, Nancy Dye, Shirley Gesaman, James Hiltbrand.

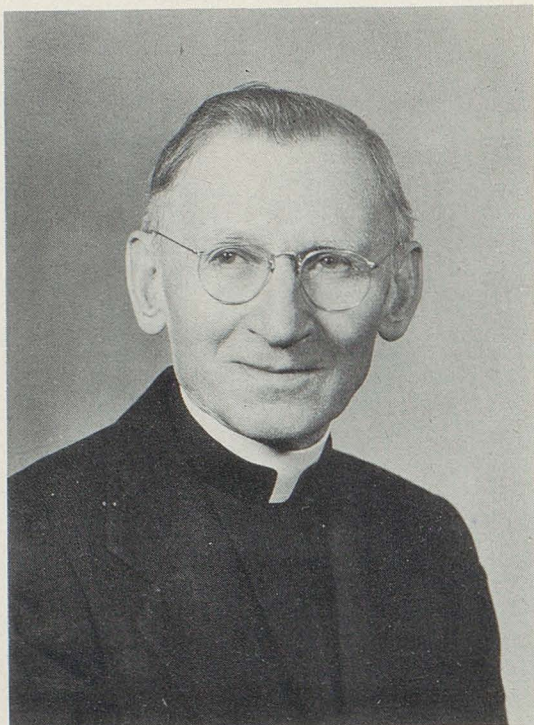
Middle Row: Mr. Summers, Doris Robert, Roger Fricke, David Krnach, Linda Mathews, Alberta Ott, Floyd Kirkpatrick, Ruth Bogard, Harlan Weygandt.

Back Row: George Reffner, Marlene Greene, Phyllis Griffin, Esther Hann, Noretta Travis, Barbara Zimmerman, Dorcas Ochsenbein, Barbara Campbell, Beverly Barber, Ann McMillen, Melvin Mansfield.

Absent: John Roth.





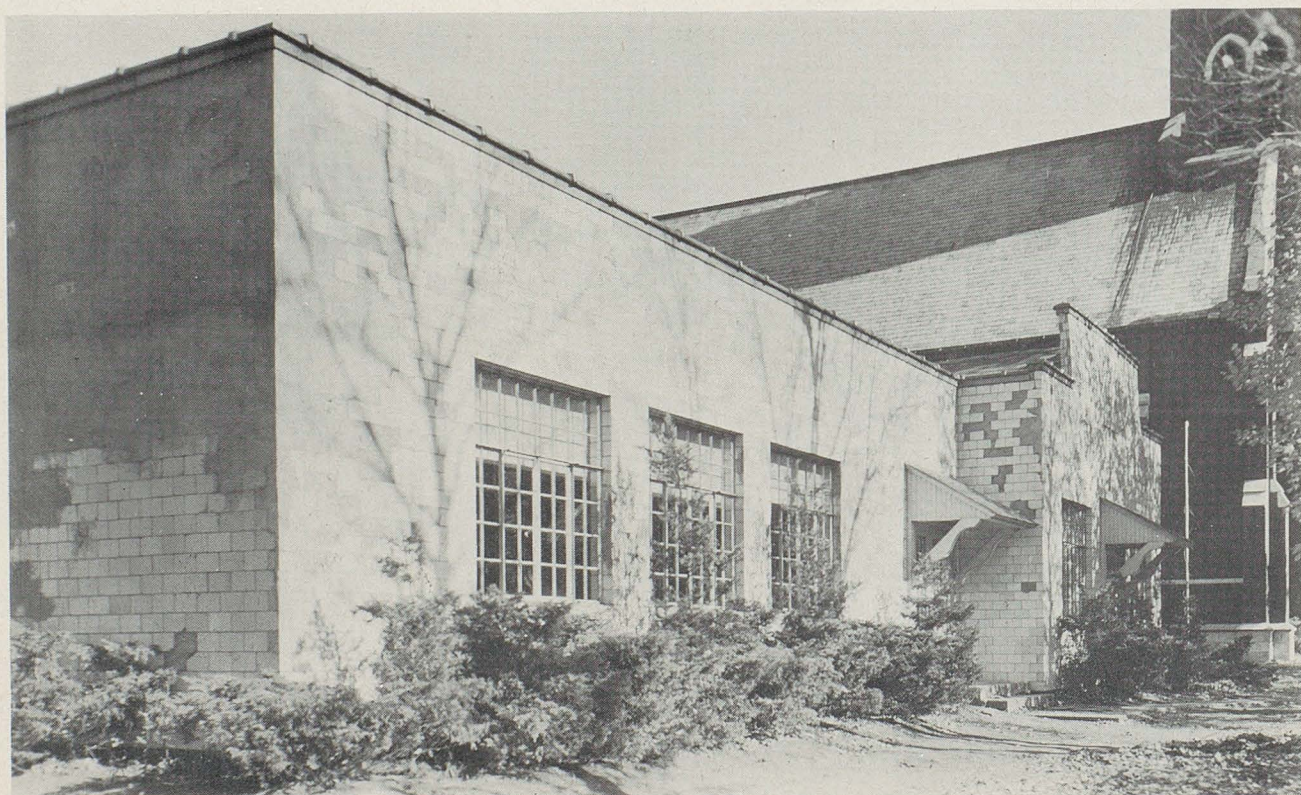


THE REVEREND FATHER
JOHN L. MAURER
Principal

STS. PHILIPS AND JAMES PAROCHIAL SCHOOL

FACULTY

SISTER MARY ST. JOAN
SISTER MARY EWALDA
SISTER MARY NATHANIEL





SIXTH, AND SEVENTH AND EIGHTH

Front Row: Tom Culp, George Baughman, Mary Ellen Brigham, Lucille Boak, Albertine Seifert, Gretchen Geier, Anne Etling, Joanne Appleman, Rita Bloomfield, Mary Demelas, Roger Rohr, Tom Burger.
 Middle Row: Fred Remark, Dale Stephan, Larry Etling, Barbara Hunt, Rita Young, Frances Arnold, Carol McAviney, Joanne Workman, Lauren Rohr, Raymond Schembechler, Robert Shafer.
 Back Row: Walter Talalas, Clarence Workman, John Shöndel, Marlene Freed, Charlotte Ott, Jerry McAviney, Thomas Tinsler, Leonard Koenig, Betty Gill, Judy Heather, Robert Gill, Donald Young, David Ferdinand.



THIRD, FOURTH AND FIFTH

Front Row: Robert Rohr, Kenneth Aman, Joyce Yingling, Mary Lou Stitz, Mary Ann Remark, Louise Seifert, Barbara Kendle, Barbara Burger, Carolyn Caillet, James Chenevey, George Gabor.
 Middle Row: Michael Gozdan, Linda Youngblood, Kathleen Garman, Mary Margaret Garman, Robert McFarland, Annette Schalmo, Raymond Yurick, Anne Weinrich, Patricia McFarland, Carol Tinsler, Gary Stephan.
 Back Row: Allan Yingling, James Koenig, Terry Willmott, Judy Burger, Joyce Talalas, Martha Blank, Roseanne Oser, Doris Boak, Gary Heather, William Williams, Karl Youngblood.



FIRST AND SECOND

Front Row: Carol Paul, Karen Etling, Ann Baughman, Mary Lois Bloomfield, Joyce Stephan, Ronald Steiner, Robert Caillet, John Youngblood, Arthur Seifert.
 Middle Row: Jane Culp, Rosemary Gill, Joyce Shöndel, Mary Alice Young, Donna Ferdinand, Floyd Freed, James Remark, James Gill, Gary Etling.
 Back Row: Eileen Simpkins, Mary Margaret Rohr, Nancy Workman, Nancy Remark, Verla Yingling, Vincent Yurick, Richard Seaman, Paul Seifert, Timothy Ilg.

