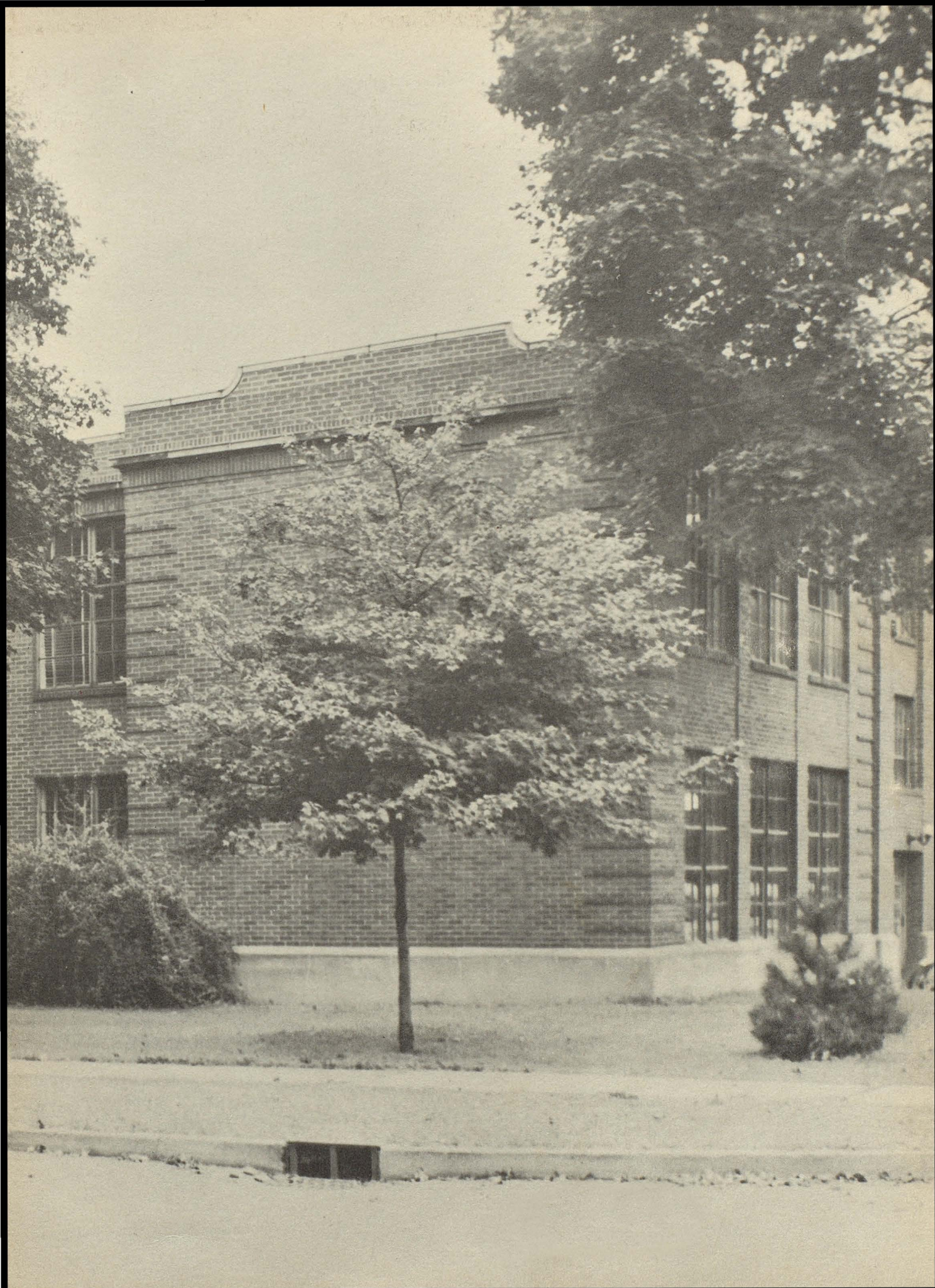
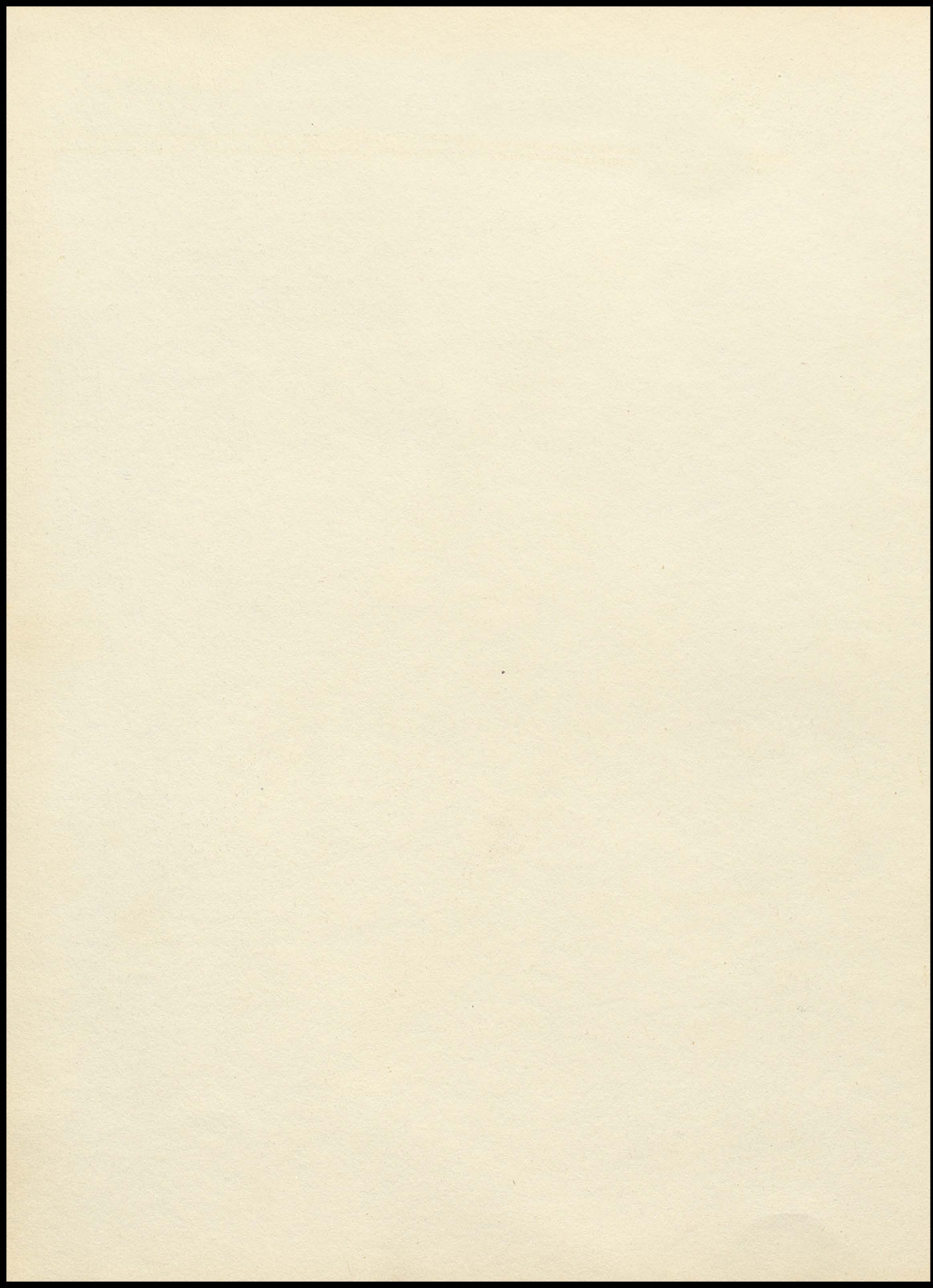


Fultonian

1949

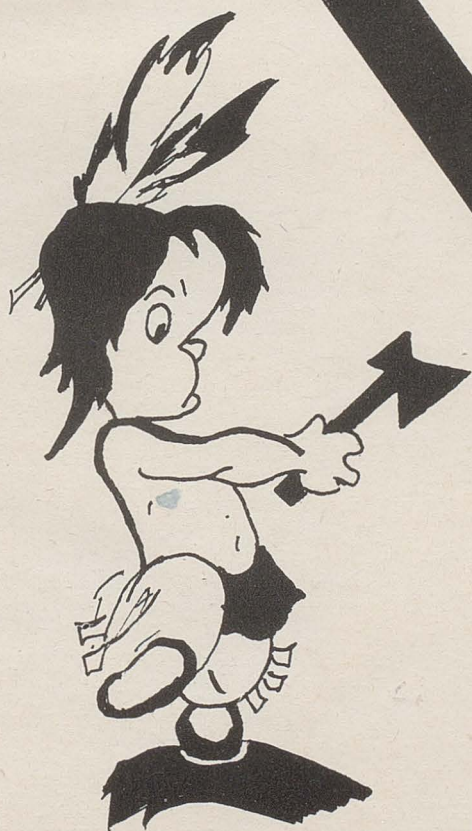


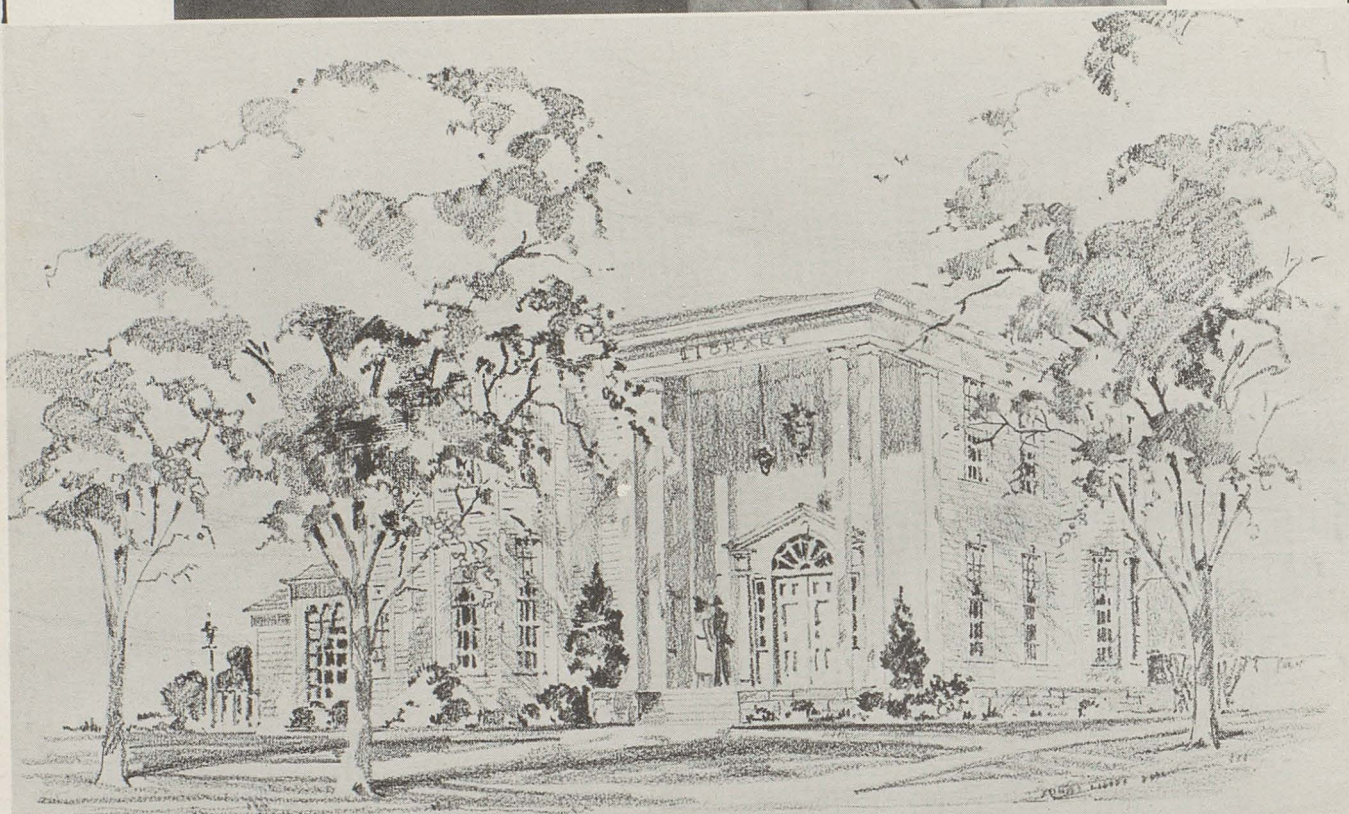




F
U
L
T
O
N
I
A
N

The
CLASS OF 1949
Presents
THE





CANAL FULTON PUBLIC LIBRARY

In recognition of a most outstanding contribution to the schools and community of Canal Fulton, it becomes the privilege of the class of 1949 to thank Mr. and Mrs. George Mulhauser for the beautiful library which they have given.

Only through the years, as countless men and women and boys and girls pass through this gracious doorway to find a wealth of information and pleasure which will be theirs for the asking, and as the horizons of our townspeople are broadened as they read, shall we begin to realize what a priceless gift we have received.

Here, to Mr. and Mrs. Mulhauser we say thank you; but we can best express our gratitude in the days to come by our vigilance in the care of this library, by our use of its contents, and by the reflection in our living and thinking of the culture which may now be our heritage.

ADMINISTRATION

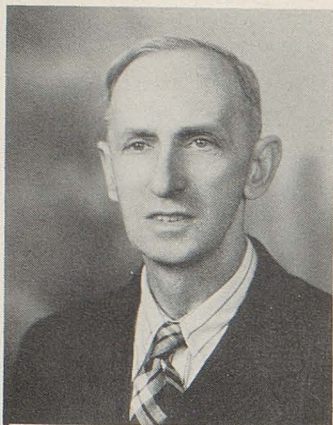


WILLIAM H. KNIGHT
Superintendent

CECELIA PAULUS
Secretary

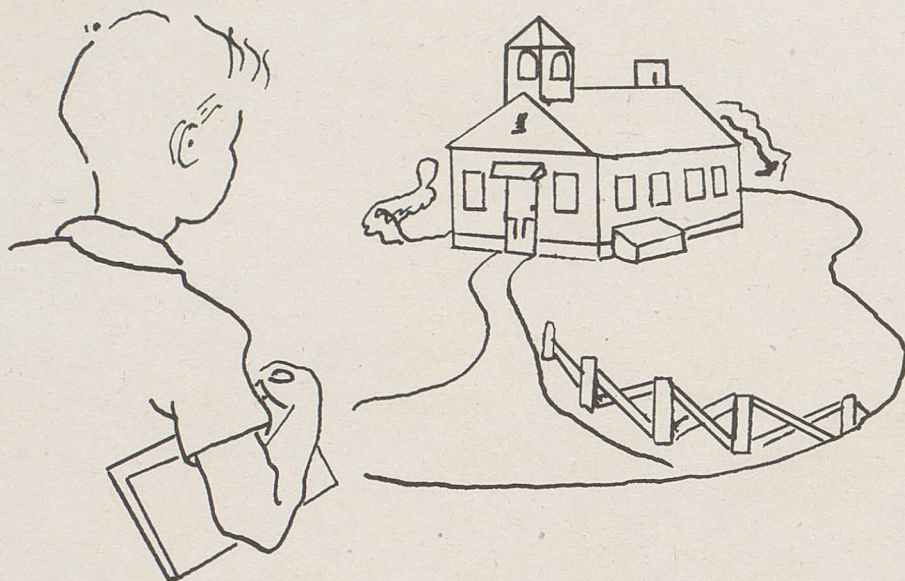
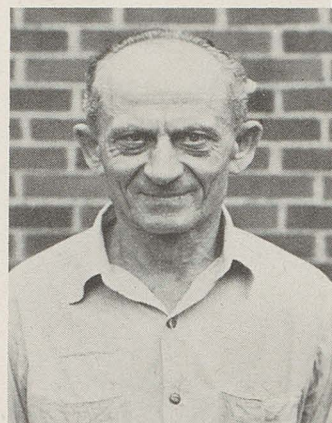
1	2	3	4	5	6	7	8	9	10
11	12	13	14	15	16	17	18	19	20
21	22	23	24	25	26	27	28	29	30
31									





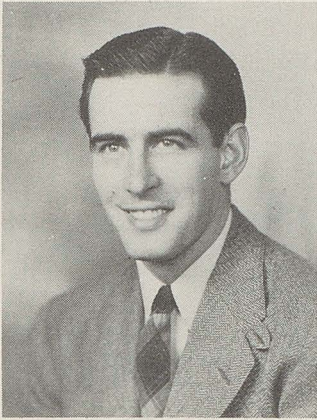
MR. HAGGERTY
High School Custodian

MR. TOTH
Grade School Custodian



BOARD OF EDUCATION





RICHARD C. WEIGLE



EMIL W. PUFFENBERGER



HOWARD I. SELCH

HIGH SCHOOL



SARAH F. LAWRENCE



MARY E. FLETCHER

FACULTY

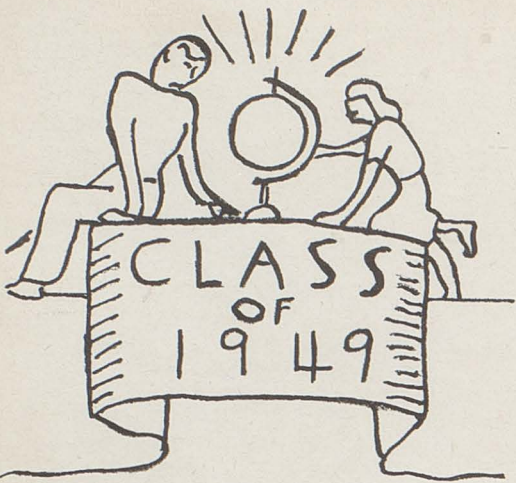


ANN E. GIBBONS



HELEN I. SIMPSON

SEPTEMBER



SEPTEMBER

- 7 Annual Student Day at the Stark County Fair.
- 8 First day of school.
- 9 Band marched at the Freedom Train Parade at Canton.
- 10 Cheerleaders elected. First pep meeting of the year.
- 11 Football Preview at Tiger Stadium. Jackson 21 Fulton 0.
- 17 First football game of the season. Rittman 30 Fulton 0.
- 20 Pictures taken for the Annual.
- 24 A night game at Brewster and a 6-6 tie. Also referee trouble.
- 25 Y-Teen Conference.
- 29 The teachers tried to have a picnic, but it rained.
- 30 First Annual Staff meeting. Seniors are in for work.

OCTOBER

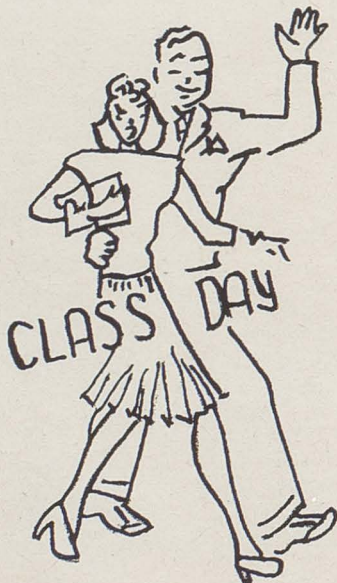
- 2 Canton Lehman Res. game. We were very close to winning (7-6).
- 8 Hartville — The best score of the season. We 24 — They 0.
- 11 Finefrocks brought a television set to school so we could see the World Series.
- 12 The Seniors go to Massillon to have their pictures taken.
- 14 Night before the Indians and Hornet's game so there was a big pep meeting, at the football field, and a snake dance.
- 15 Homecoming. East Canton wins 14-7. No school, Teacher's Meeting at Reedurban.
- 16 Y-Teen President, Song Leaders and Advisors Conference at Columbus.
- 17 Juniors start play practice. Now they are in for some work.
- 19 Y-Teen Hayride planned, but it rained.
- 22 Gov. Herbert was in town. The band played.
- 23 St. Joseph game ended with a scoreless tie. The last home game.
- 28 The Indians travel to Jackson. Lost 32-0.
- 29 NO SCHOOL, today.

NOVEMBER

- 3 Teachers try another picnic and had more rain.
- 5 Navarre defeated Fulton 46-6.
- 10 Band had a picnic at the football field.
- 11 Armistice Day so no school. The last football game of 1948. Doylestown won 19-6 after the Indians gave them a scare. The band ended a very successful marching season, having marched at all football games.
- 20 Band Mothers sponsored a square dance.
- 24 Thanksgiving vacation starts. The Home Ec. Club sponsored a Tea Dance for the students. The first basketball game of the season was a loss to Clinton 48-21.

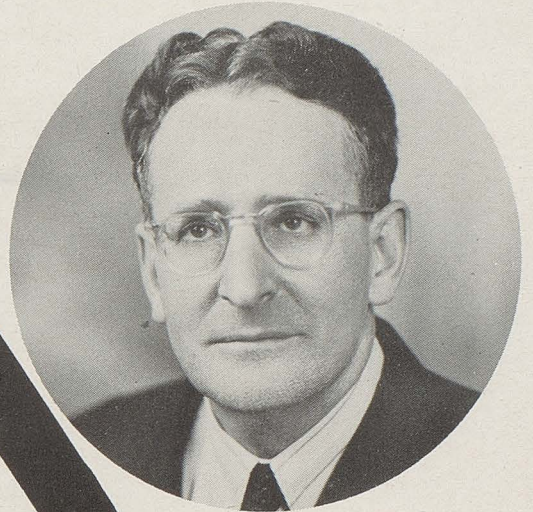
DECEMBER

- 3 Brewster game. Score ?? (We 24 — They 60).
- 4 It's off to Jackson who won 64-19. Just give the Indians time to get started.
- 9 Mrs. Cuthbert entertained the Y-Teens with a very nice Christmas party.
- 10 Middlebranch defeated Fulton 62-26.
- 11 Dundee came to town to get even for beating them last year. (48-20).
- 14 The first appearance of the Concert Band was at the annual December Concert, which was half Christmas music.
- 15 Y-Teen Christmas, chili-supper.
- 16 P.T.A. Grade school Christmas program.
- 17 Christmas Vacation!!! Alumni defeated Indians 72-56.
- 18 It was a big night for Fulton. They handed Beach City three defeats. Varsity score — Fulton 49-45.
- 21 Magnolia defeated the Indians for the last game of 1948 (52-32).
- 23 Y-Teen Annual "Snow-Ball."
- 28 Band Mothers sponsor another Square Dance.

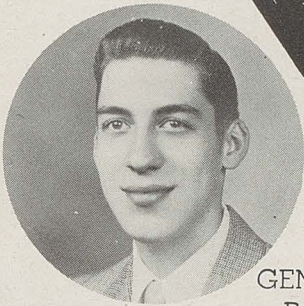


MOTTO: Forward ever: Backward never
COLORS: Blue and Silver
FLOWER: Yellow rose

SENIORS



MR. KNIGHT
Class Sponsor



GENE SIBILA
President



ARTHUR WAGNER
Vice President



JANET PITZ
Secretary



JAMES COLOPY
Treasurer



DONALD HALLETT

"Bones"

"Full of vitality and full of fun, Don is liked by everyone."

Football 2, 3, 4
Basketball 3, 4
Class President 2
Projector Club 1, 2, 3
Junior Play
Annual Staff



LEILA JOY SCHROEDER

"Sis"

"With a voice so low and a face so sweet, A more pleasant one you could not meet."

Band 1, 2, 3, 4
Orchestra 1, 2, 3, 4
Glee Club 1, 2, 3, 4
Band Librarian 3
Librarian 1
Commercial Club 3, 4
Newspaper Staff 4
Solo and Ensemble 1, 2, 3, 4
Y-Teens 1, 2, 3, 4
Y-Teens Social 4
Y-Teens Secretary 3
Literary Contest 1, 3
Student Congress 2
Student Congress Treas. 2
Annual Co-Editor
Scholarship
Y-Teen Music Chairman 1
Junior Play
Vice-Pres. of Ohio and W. Pa. District Y-Teens 3



JOHN COLOPY

"John"

"As an athlete he will go far, For at sports he's quite a star."

Football 1, 2, 3, 4
Basketball 1, 2, 3, 4
Projector Club 2
Hi-Y 4
Hi-Y President 4
Annual Staff



WANDA GREENHOE

"Grundy"

"Pretty, quiet, nice and shy, You'll have to admit that she'll get by."

Band 1, 2, 3, 4
Solo and Ensemble 1, 2, 3, 4
Band Librarian 1, 2
Orchestra 1, 2, 3, 4
Y-Teens 1, 2, 3, 4
Y-Teens Treasurer 4
Junior Play
Glee Club 1, 2, 3
Librarian 1, 2
Annual Staff
Commercial Club 3, 4
Newspaper Staff 4

JAMES COLOPY

"Jim"

"Jim's got personality plus, He rates mighty high with us."

Football Manager 1, 2, 3, 4
Basketball Manager 1, 2, 3, 4
Class Treasurer 1, 2, 3, 4
Junior Play
Projector Club 2
Hi-Y 4
Commercial Club 4
Annual Staff



GLENN SIBILA

"Putty"

"To worry little, to study less, That's his idea of happiness."

Football 1, 2, 3, 4
Class Secretary 2
Asst. Basketball Manager 2
Projector Club 2, 3, 4
Hi-Y 4
Annual Staff

EUGENE SIBILA

"Gene"

"Quiet, friendly, and neat of dress, You'll have to admit he's one of the best."

Band 1, 2, 3, 4
Orchestra 1, 2, 3, 4
Junior Play
Hi-Y 4
Hi-Y Secretary 4
Commercial Club 3, 4
Newspaper Staff 4
Annual Staff
Class President 4
Cheerleader 1
Band Drum Major 3, 4
Band Ensembles 1, 2, 3, 4
Band Vice President 4





MARILYN GILL

"Mitch"

"Marilyn never has much to say, and yet, She's one of the nicest girls you've met."

Scholarship 2
Commercial Club 3, 4
Annual Staff
Junior Play
Newspaper Staff 4



JANET PITZ

"Pitzie"

"She was crowned football queen, You have to agree she is a dream."

Football Queen 4
Snowball Queen 4
Band 1, 2, 3, 4
Orchestra 1, 2, 3, 4
Glee Club 1, 2, 3, 4
Band Librarian 1, 2
Band Treasurer 1
Band Secretary 3, 4
Y-Teens 1, 2, 3, 4
Y-Teen Chaplain 2
Y-Teen Vice President 3
Y-Teen President 4
Student Congress 2
Student Congress Sec. 2
Class Secretary 4
Commercial Club 3, 4
Scholarship 2, 3, 4
Junior Play
Librarian 2
Solo and Ensemble 1, 2, 3, 4
President of Ohio and
W. Pa. District Y-Teens 4
Annual Co-Editor
Newspaper Staff



SHIRLEY MAUGER

"Maug"

"Charms strikes the heart, But merit wins the soul."

Band 1, 2, 3, 4
Orchestra 2, 3, 4
Commercial Club 3, 4
Scholarship
Annual Staff
Junior Play



ARTHUR WAGNER

"Art"

"There is honesty, manhood, and good fellowship in him."

Manchester 1, 2, 3
Class Play 3
Football 3, 4
Basketball 1, 2, 3,
Hi-Y 2, 3, 4
Hi-Y Treasurer 3
Newspaper Staff
Vice President 4
Annual Staff

RALPH SUDEROW

"Ralph"

"We gaze and still our wonder grew, That one small head could carry all he knew."

Football 3, 4
Basketball 4
Band 1, 2, 3, 4
Orchestra 1, 2, 3, 4
Projector Club
Annual Staff



MARTHA JANE SCHMACHTENBERGER

"Jane"

"Leave it to Jane."

Band 3, 4
Y-Teens 1, 2, 3, 4
Y-Teen Publicity Chairman
Glee Club 1
Junior Play
Librarian 1
Annual Staff
Commercial Club 3

MARTHA MARKHAM

"Marty"

"Little, peppy and mighty sweet, As a friend she can't be beat."

Y-Teens 1, 2, 3, 4
Home Ec. Club 2, 3, 4
Glee Club 1, 3
Band 1, 2, 3, 4
Orchestra 3, 4
Junior Play
Band Librarian 3, 4
Commercial Club 3, 4
Annual Staff
Newspaper Staff 4
Ensemble 3, 4





DONALD NELSON

"Don"

"He makes good of bad,
And friends of foes."

FFA 2, 3
Projector Club 2
Football 4
Annual Staff

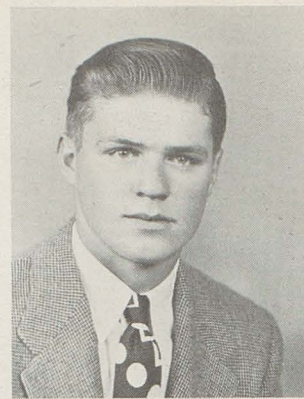


NORMA JEAN GORDON

"Sally"

"For three successful years
She has led our school in
cheers."

Commercial Club 3, 4
Y-Teens 1, 2, 4
Cheerleader 2, 3, 4
Home Ec. Club 1, 2
Home Ec. Publicity 2
Glee Club 1, 2
Annual Staff



PHILLIP DITTMER

"Phil"

"The worlds no better if we
worry, Life's no longer if
we hurry."

FFA 1, 2, 3
FFA Sec. 3
Football 3, 4
Annual Staff



MARY ANN HAHN

"Mary"

"Not too shy, not too bold,
Eyes of blue, heart of gold."

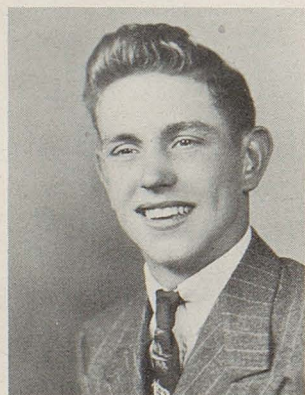
Band 2, 3, 4
Glee Club 2
Solo 3, 4
Orchestra 2, 3, 4
Junior Play
Cheerleader 4
Home Ec. Club 1, 2
Librarian 2
Y-Teens 1, 2, 3, 4
Y-Teen Membership
Chairman 3
Commercial Club 3, 4
Annual Staff 4
Newspaper Staff 4
Akron Jennings 1

ALICE ARMAN

"Blondie"

"Blonde hair and eyes of
blue, With plenty of mis-
chief and talent too."

Band 1, 2, 3, 4
Orchestra 2, 3, 4
Glee Club 1, 2
Cheerleader 4
Y-Teens 1, 4
Solo and Ensemble 2, 3, 4
Commercial Club 3, 4
Annual Staff
Newspaper Staff 4
Home Ec. Club 1



LAWRENCE HANN

"Handy"

"Tall, handsome and a lit-
tle shy, And really he's
quite a guy."

FFA 2, 3
FFA Reporter 3
Football 1, 2, 3, 4
Basketball 3
Projector Club 2
Annual Staff
Hi-Y 4

HARLAN DAVIS

"Archie"

"No sinner, yet no saint
perhaps, But — well the
very best of chaps."

FFA 1, 2, 3, 4
Band 2, 3, 4
Orchestra 3, 4
Junior Play
Annual Staff
Football 4
Hi-Y 4

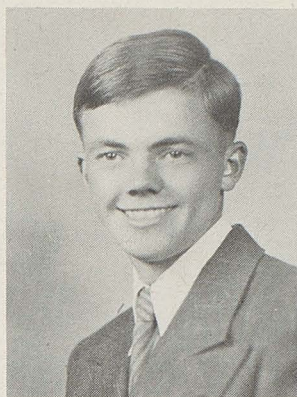




EVELYN STOCKER
"Evie"

"A merry heart maketh a cheerful countenance."

Glee Club 1
Commercial Club 3, 4
Y-Teens 4
Annual Staff



WALTER PERRY
"Walt"

"Worth makes the man."

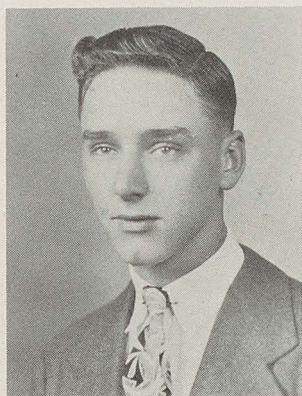
FFA 3
Annual Staff 4
Wadsworth 1, 2



IOLA MAE OCHSENBEIN
"Mae"

"Here's to the girl with a heart and a smile, Who makes this bubble of life worth while."

Glee Club 1
Commercial Club 3, 4
Y-Teens 4
Annual Staff 4



JOHN GIBBS
"Gibby"

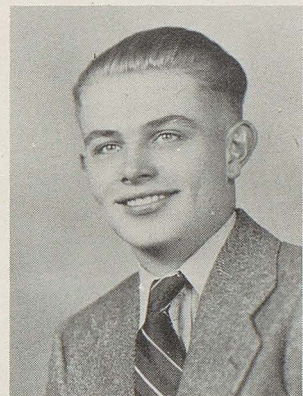
"John's got that candid eye
But you can't say he's shy."

FFA 1, 2, 3
Football 1
Projector 1
Annual Staff 4
Hi-Y 4

RICHARD RIES
"Dick"

"Keen sense and common sense
And little room for nonsense."

FFA 1, 2, 3
Projector Club 1
Annual Staff



BEVERLY KLEIN
"Bev"

"Although her school work is always done, She still has time for lots of fun."

Cheerleader 2, 3
Band 1
Orchestra 1
Glee Club 1, 2
Football Queen Attendant 4
Annual Staff 4
Newspaper Staff 4

CAROL McCLAY
"Mac"

"Beauty in mind and beauty in face, In this world she's found her place."

Y-Teens 1, 2, 3
Band 1, 2, 3
Glee Club 1, 2, 3
Librarian 1
Commercial Club 3
Class Officer 1
Annual Staff





CHARLES SUCHKA
"Chuck"

"As merry as the day is long."

Commercial Club 3
Annual Staff



CAROL LAWRENCE
"Lawrencie"

"Take life too seriously and what is it worth."

Home Ec. 1, 2, 3, 4
Band 1, 2, 3, 4
Solo 3
Commercial Club 3, 4
Annual Staff
Newspaper Staff



EDWARD MISKEVICH
"Ed"

"True wit is his to advantage dressed."

"What oft he thought was well expressed."

Newspaper Staff
Commercial Club 3, 4
Junior Play
Annual Staff
F F A 1, 2



RUTH KRITES
"Ruthie"

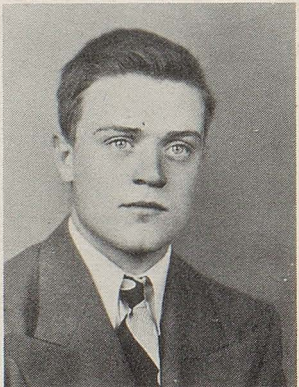
"Her friends...quite a sum;
Her foes...there are none."

Band 1, 2, 3, 4
Orchestra 3
Solo 3
Home Ec. Club 1, 2, 3, 4
Home Ec. Vice President 4
Stark County Home Ec.
Vice President 4
Commercial Club 3, 4
Y-Teens 3, 4
Newspaper Staff
Annual Staff

ELAINE HEATHER
"Lanie"

"Elaine seems rather quiet
and shy, But after you
know her My—My."

Librarian 3, 4
Home Ec. 1, 2, 3, 4
Commercial Club 3, 4
Annual Staff
Newspaper Staff



EDWARD WHITE
"Whitie"

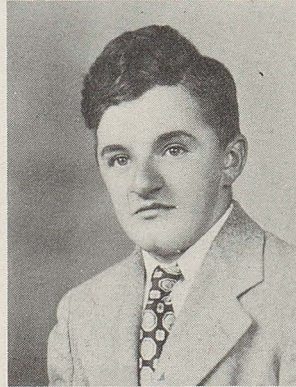
"Some think the world is
made for fun and frolic,
And so does Whitie."

Football 3, 4
Projector Club 3
Massillon 1, 2
Annual Staff

EARL SHEETZ
"Ickie"

"As was his worth, So was
his wisdom known."

F F A 1, 2, 3, 4
F F A President 3
Annual Staff





CHESTER SMITH

"Chet"

"He has a smile for everyone."

Football 1, 2, 3, 4
Basketball 2, 3, 4
Junior Play
Class President 4



LAURA JEAN BAUMAN

"Jeanie"

"She is really happy and gay, While she is waiting for her wedding day."

Y-Teens 1
Home Ec. Club 2, 3
Home Ec. President 3
Commercial Club 3, 4
Annual Staff 4
Glee Club 1, 2
Librarian 2



ROBERT STANFORD

"Bob"

"Bob was liked by everyone."

Football 3, 4
Projector Club 2
Annual Staff



NATHALIE NICHOLAS

"Nathy"

"Her ways are ways of pleasantness, and all her paths are peace."

Y-Teens 1, 2, 3, 4
Y-Teen Publicity Chairman
Home Ec. Club 1, 3, 4
Home Ec. Treasurer 4
Band 1, 2, 3, 4
Commercial Club 4
Annual Staff 4

BARBARA RIES

"Barb"

"A true friend is forever a friend."

Y-Teens 3, 4
Y-Teen Service Chairman 4
Glee Club 4
Home Ec. Club 2, 3, 4
Commercial Club 3, 4
Annual Staff



BETTY HUDDLESTON

"Winkie"

"Betty's nice and full of fun, She is liked by most everyone."

Band 1, 2, 3, 4
Band Librarian 2, 3, 4
Glee Club 1, 2, 3, 4
Orchestra 1, 2, 3, 4
Y-Teens 1, 2, 3, 4
Librarian 2, 3
Home Ec. 1, 2, 3, 4
Home Ec. Secretary 4
Annual Staff 4
Newspaper Staff 4

JOAN McARDLE

"Mickey"

"Thoughtful and reserved in manner."

Commercial Club 3, 4
Junior Play
Glee Club 1, 4
Home Ec. Club 1
Newspaper Staff



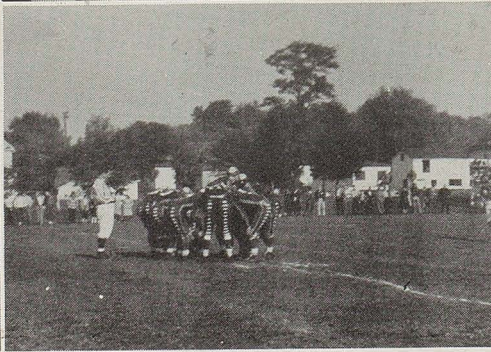
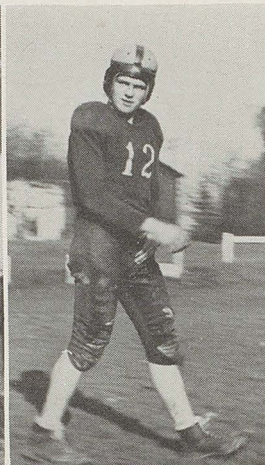
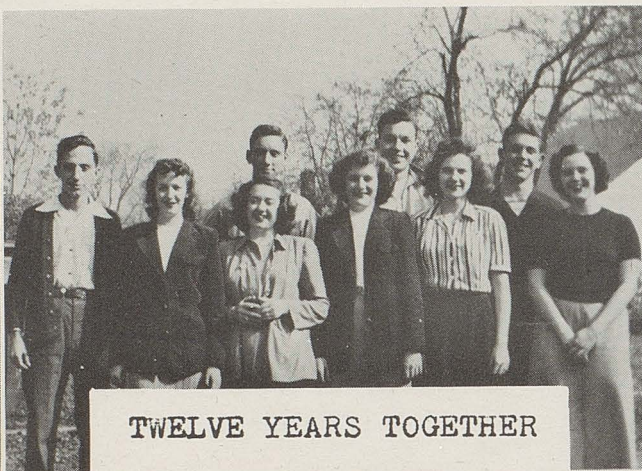
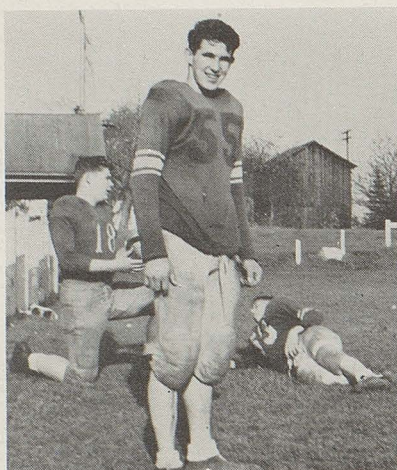


VICTOR FOXX

These two members of our Class left in their Junior year to join the United States Marines. The Class of '49 wants to wish them the best of luck.



RAYMOND BREMKAMP



C

L

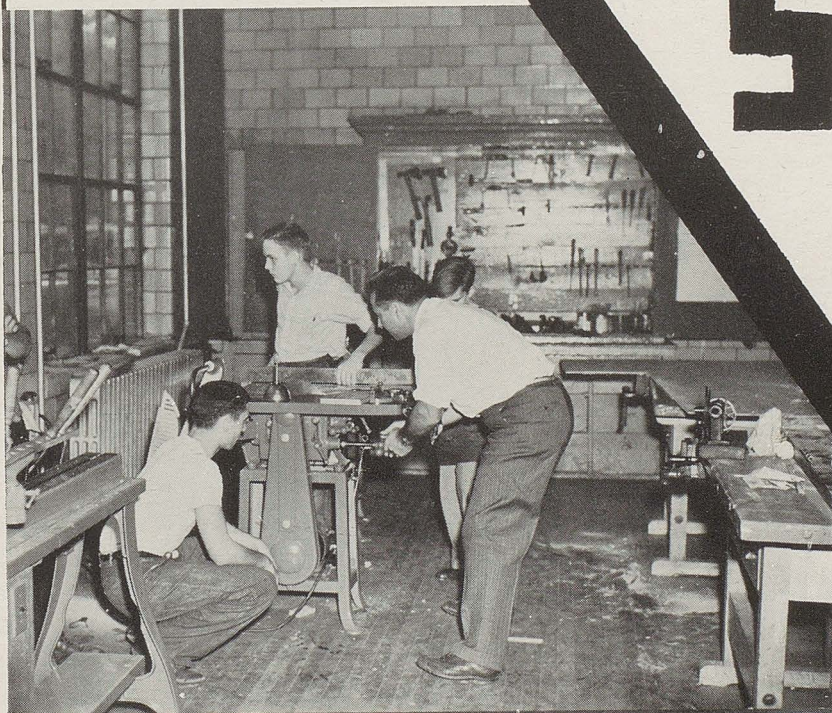
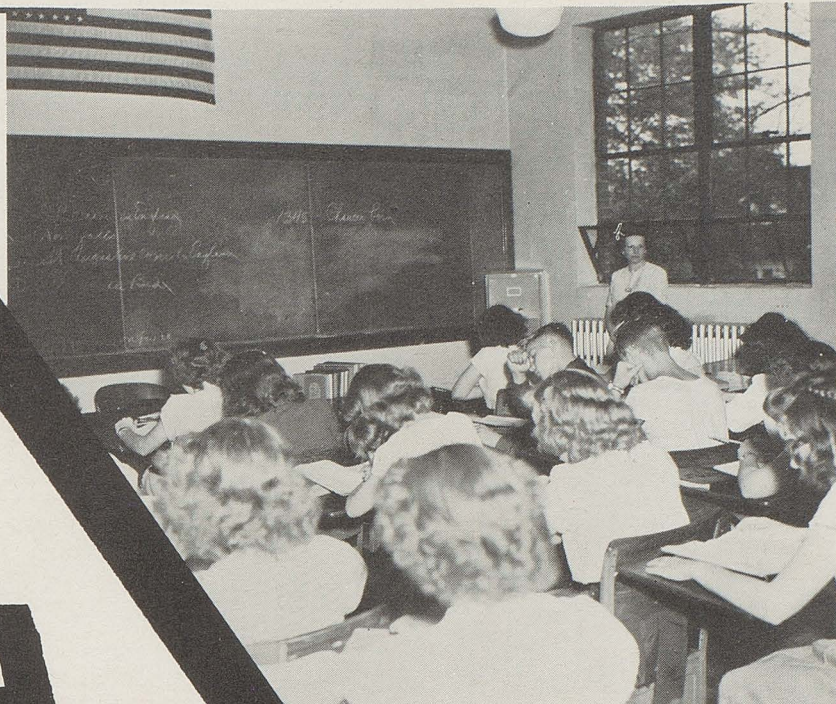
A

S

S

E

S





Back Row: Ann Jolliff, Janet Bauman, Irene Suchka, Bruce Sullivan, Robert Lockhart, Donald Shilling, Dorothy Zuni, Mary Lou Bauman, Gloria Nicholas, Edna Gill, Virginia Fricke, Miss Gibbons.

Front Row: Carl Koppes, Donald Schwendiman, Dorothy Moore, Duane Ellis, Calvin Knotts, David Baughman, Larry Kobie, Merlin Kerstetter, Pauline Hardgrove, Roland Lindsay, Joanne Duncan, Phillip Moore.

Absent: Rose Simons.

JUNIORS





Back Row: Marilyn Flounders, Thomas Stockert, Mary Jean Rohr, Joanne Colopy, Joanne Galvin, Elizabeth McCabe, Mary Francis Ritchie, Shirley Carver, Theresa Martin, Bonnie McArdle, Joanne Ott, Shirley Byers, Aletha Weaver, Paul Flounders, Mary Ellen Dye.

Middle Row: Betty Nicholas, Ruth Ann Schroeder, Rose Brigham, Carl Zimmerman, James Shull, Carl Krites, Carolyn Schmachtenberger, Carol Harbaugh, William Smail, Donald Hague, Genieva Swisher, Kay McClay, Donald Reichenbach, Miss Simpson.

Front Row: Dale Minks, Mary Lou Jones, Thomas Ries, Duane Kreckie, Ervin Dye, Robert Hiltbrand, John Dittmer, Ray Baughman, John Stockert, Paul Simons, Edward Stanford, Harry La Berth, Theodore Koppes, Melvin Cormany, Mary Lou Burwell.

Absent: Doris Flake.



SOPHOMORES



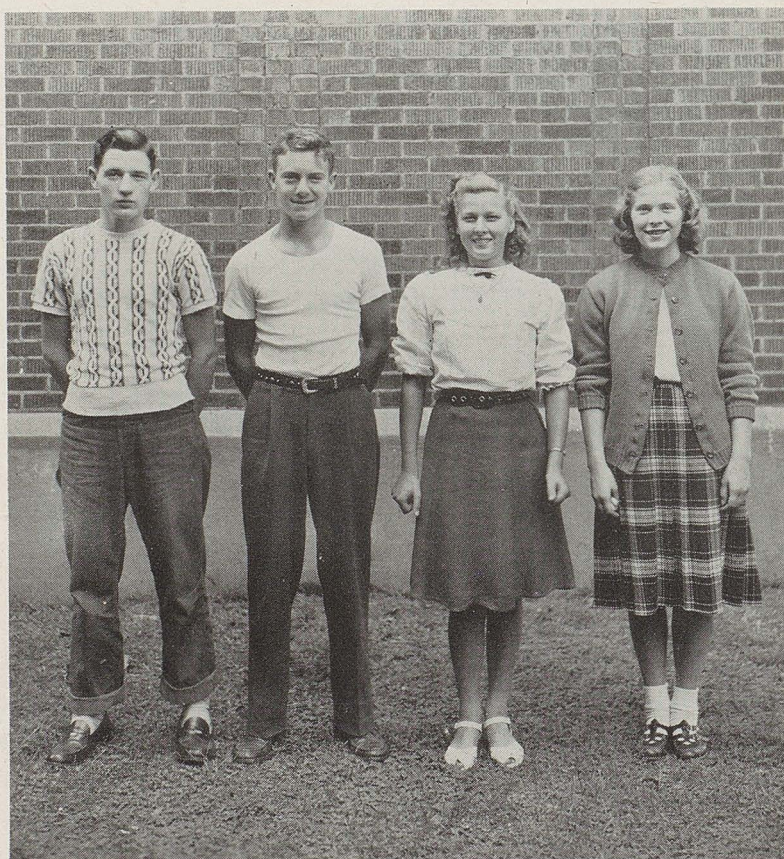
Back Row: Paul Ferdinand, Robert Humble, Cecelia Marthey, Herbert Seifert, Roy Ellis, Norma Jean Mosgrove, Gloria Schwartz, Connie Swisher, Donald Sullivan, Barbara White, William Greene, Mary Workinger, Noreen Simons.

Middle Row: Joan Jastraub, Janet Hill, Patsy Foxx, Kenneth Decker, Janice Setterlin, Lois Hadley, Marjorie Neidert, Larry Douglas, James Smith, Edward Moore, Beverly Stemple, Donna Perry, Coyla Hann, Miss Fletcher.

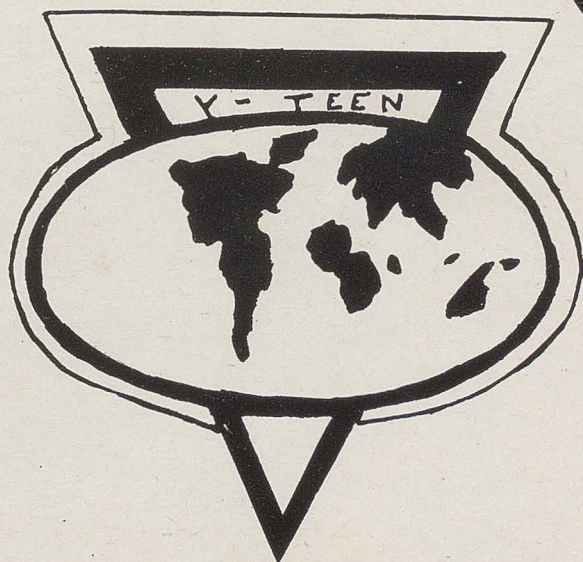
Front Row: Walter Gill, James Fox, John Bosley, James Gill, Orval Parker, Lawrence Ochsenbein, Kenneth Boyer, Clyde Lyons, James Stephan, Glenn Swigart, Carol Bauman, Paul Jastraub, Gerald Cuthbert.

Absent: Shirley Fudge, Bonnie Long.

FRESHMEN

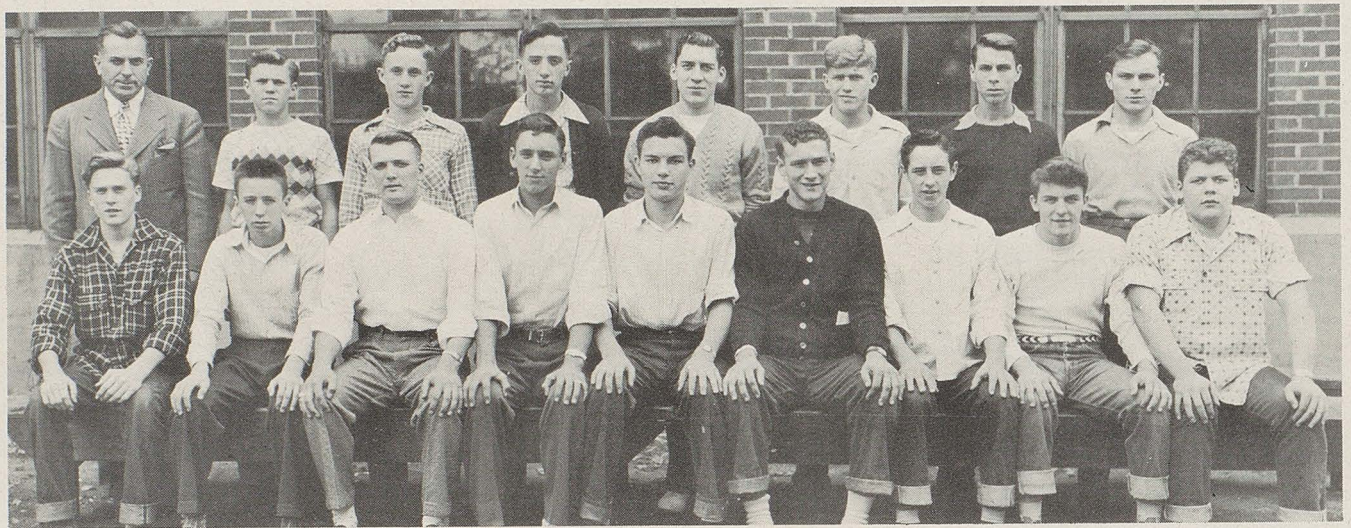


ACTIVITIES





COMMERCIAL CLUB



HI-Y



LIBRARIANS

Compliments of the Fulton Feed and Supply



Y-TEENS



HOME ECONOMICS CLUB



NEWSPAPER STAFF

Compliments of the Blank Coal Co.

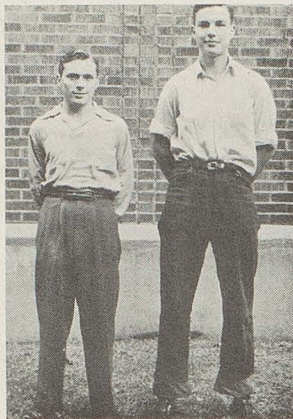


GRADES

A
N
N
U
A
L



EDITORS

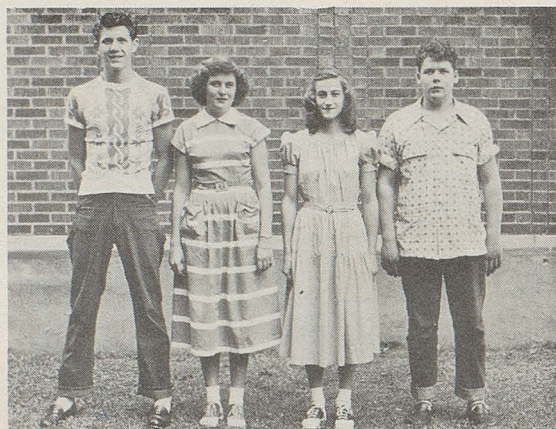


BUSINESS MANAGERS

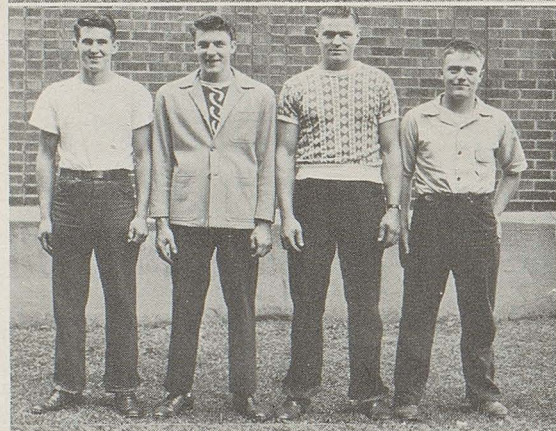
S
T
A
F
F



MUSIC



S
E
N
I
O
R
S

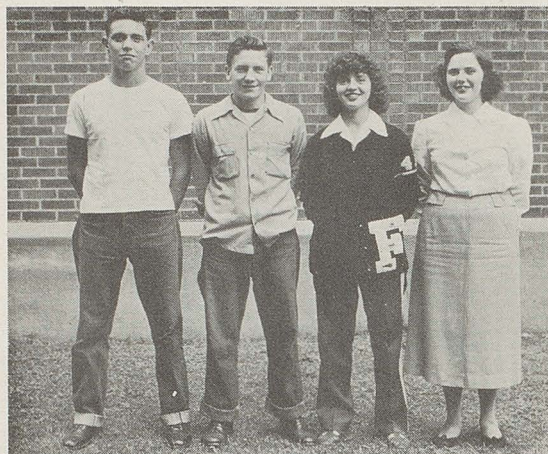


S
P
O
R
T
S



P
H
O
T
O
G
R
A
P
H
S

A
C
T
I
V
I
E
S



A
R
T



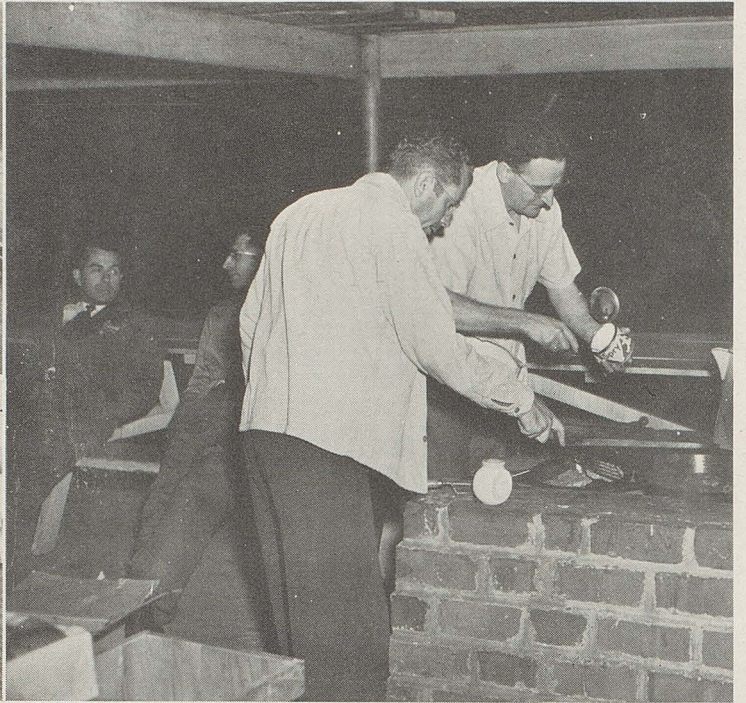
T
Y
P
I
S
T



1948 P R O M



Compliments of Denison and Diehl



Compliments of the Finetrock Bros.

S

P

O

R

T

S



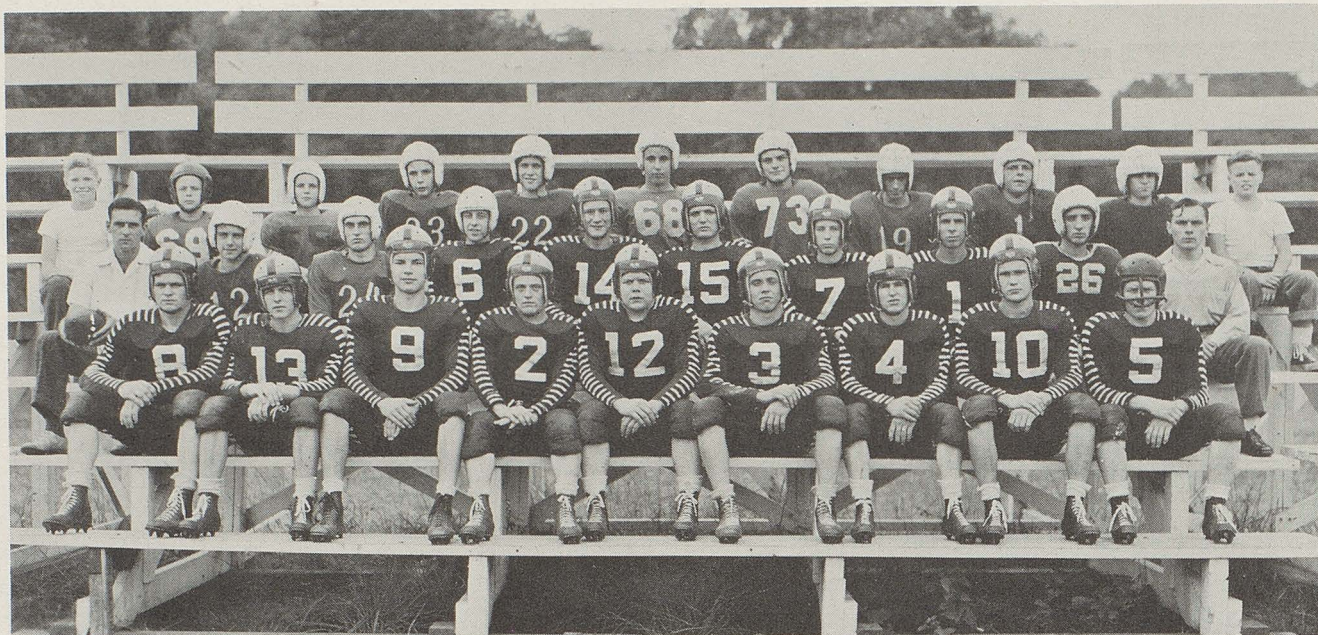
MR. WEIGLE
Coach



DR. SWOGER
Assistant Football Coach



MR. SELCH
Assistant Basketball Coach

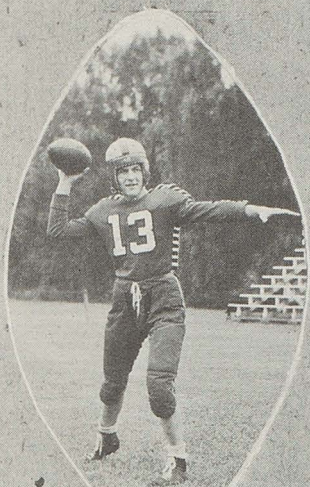


FOOTBALL SCHEDULE 1948

Opponent	We	They
Sept. 17		
Rittman	0	30
*Sept. 24		
Brewster	6	6
Oct. 2		
Lehman Res.	6	7
Oct. 8		
Hartville	24	0
Oct. 15		
East Canton	7	14
Oct. 23		
St. Joseph	0	0
*Oct. 28		
Jackson	0	32
Nov. 5		
Navarre	6	46
*Nov. 11		
Doylestown	6	19
*Night games		



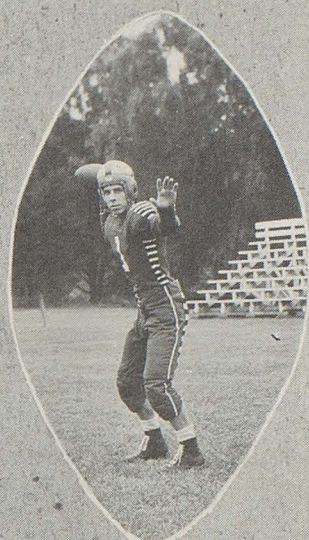
Compliments of Johnny Shull



"JOHN"



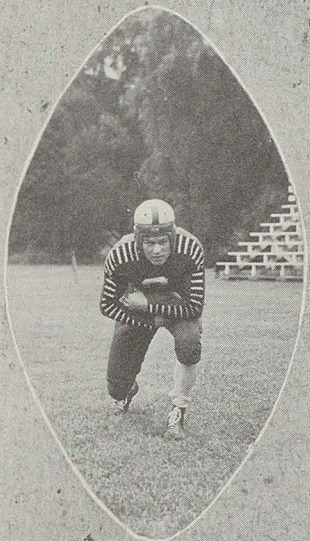
"DON"



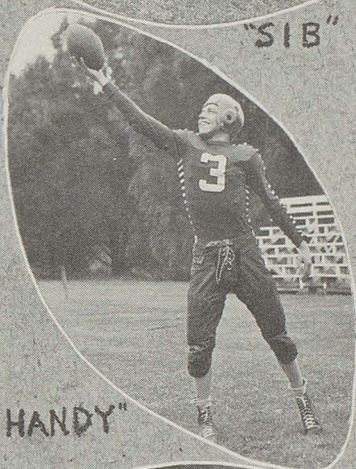
"ART"



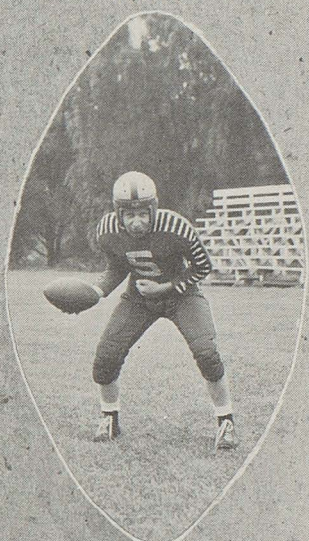
"SIB"



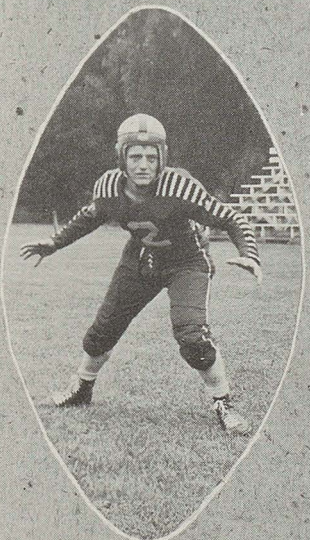
"PHIL"



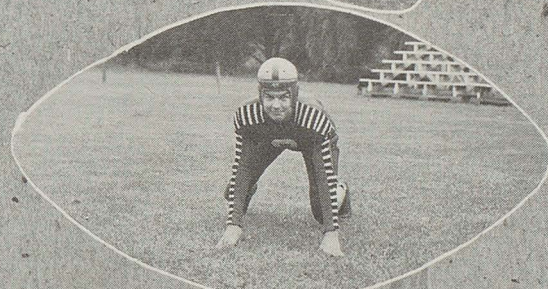
"HANDY"



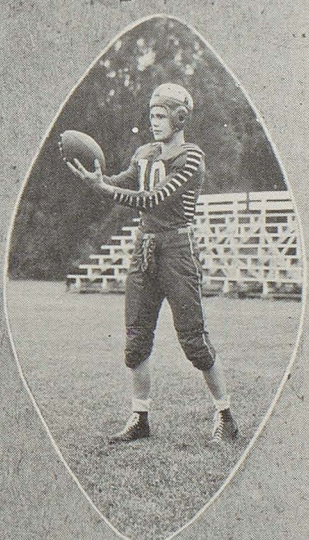
"BOB"



"WHITEY"



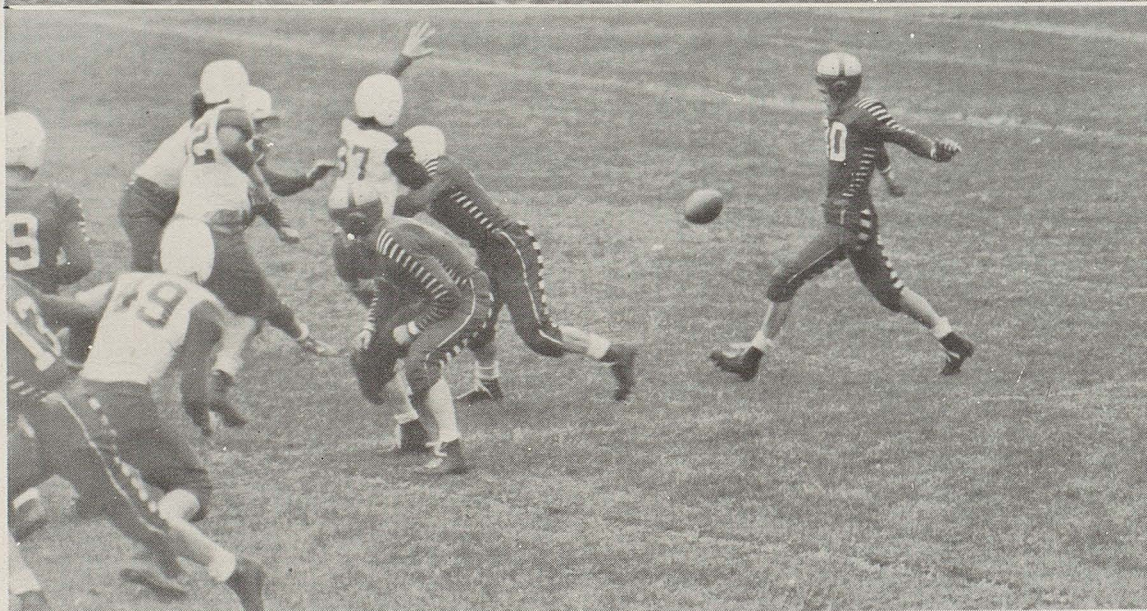
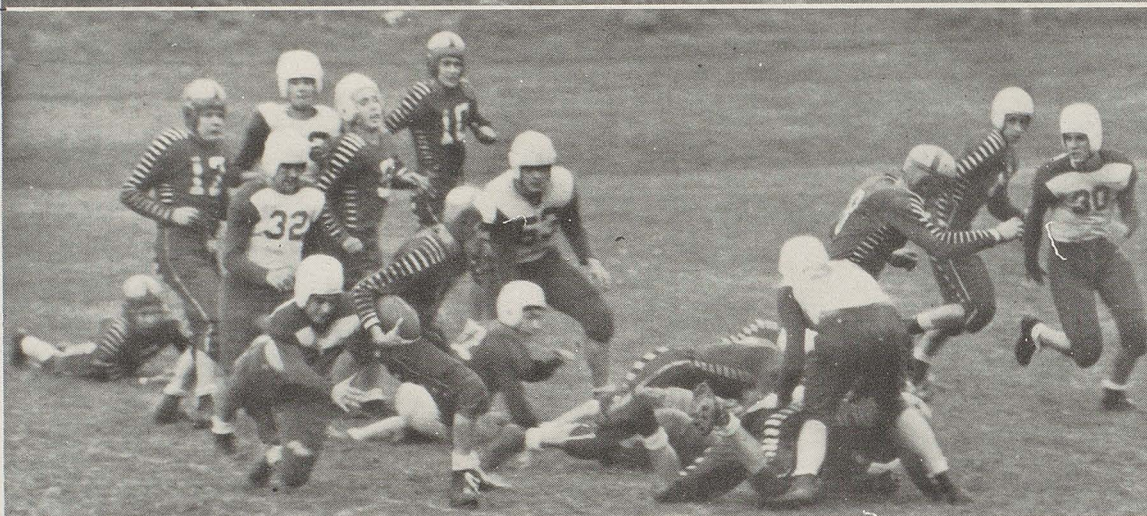
"RALPH"



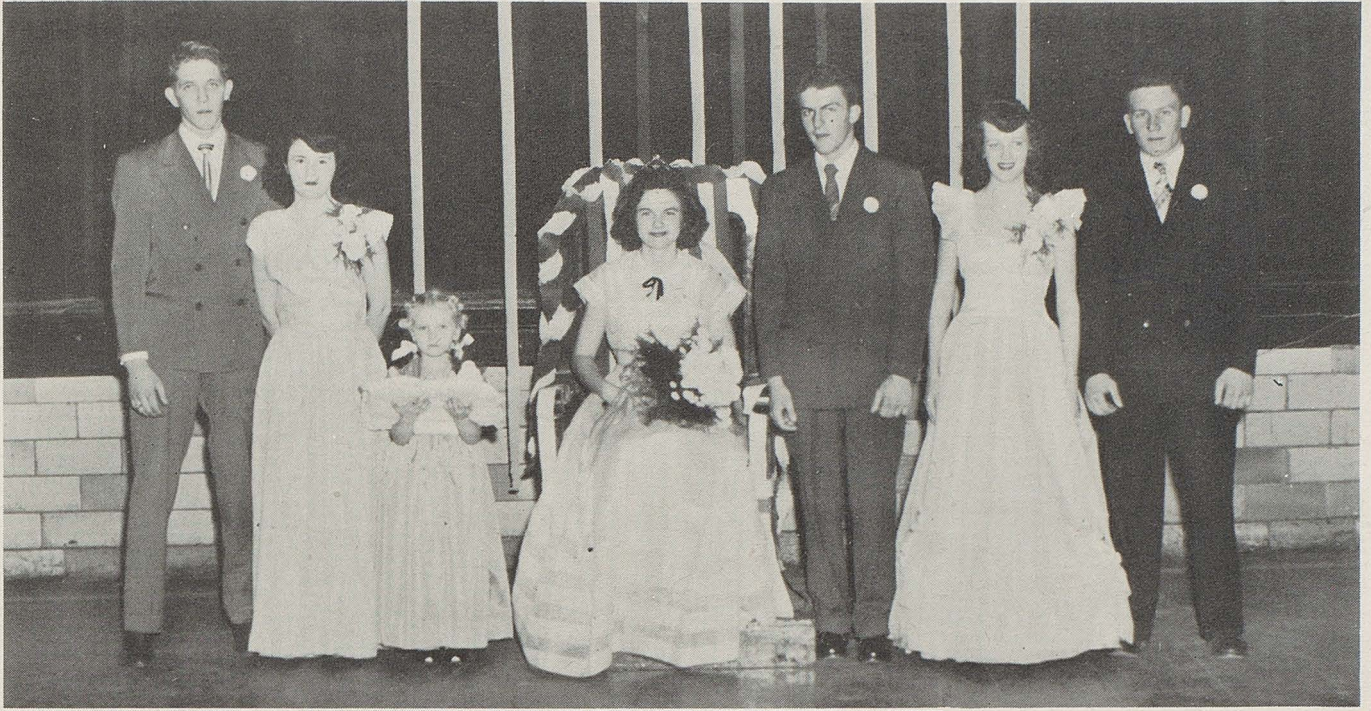
"CHET"



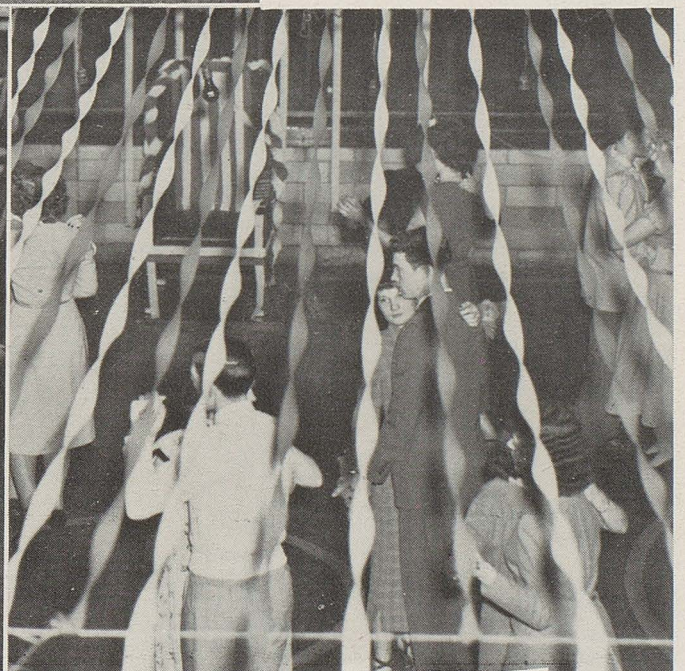
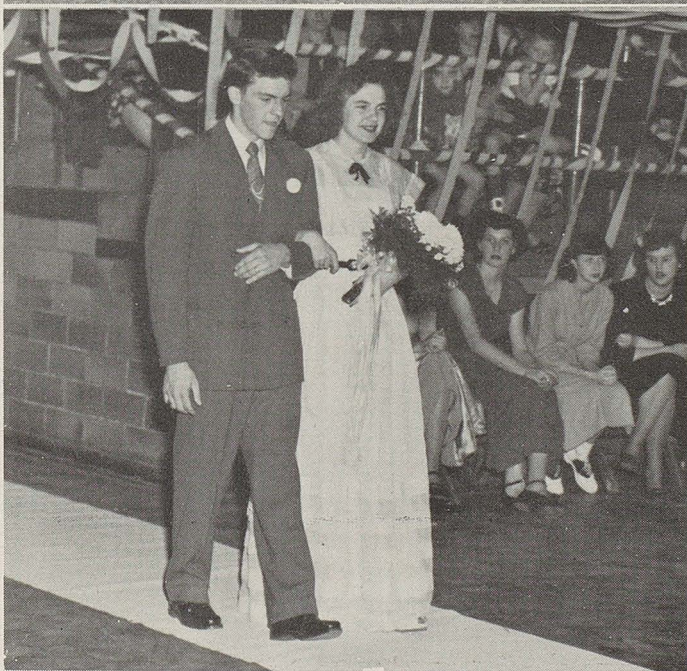
"ARCHIE"



Compliments of Dr. Robert Swoger



H
O
M
E
C
O
M
I
N
G
1948

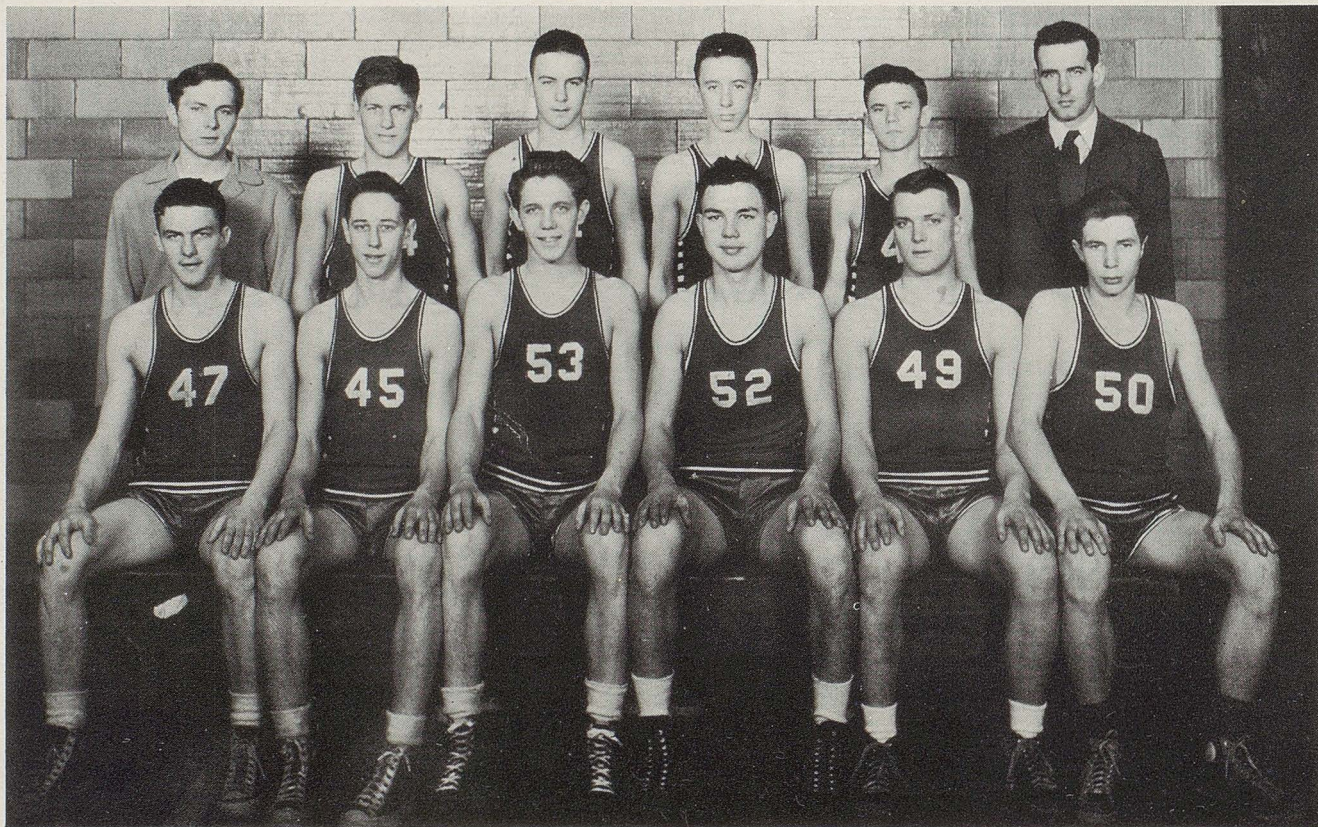


Compliments of the B & M Grill

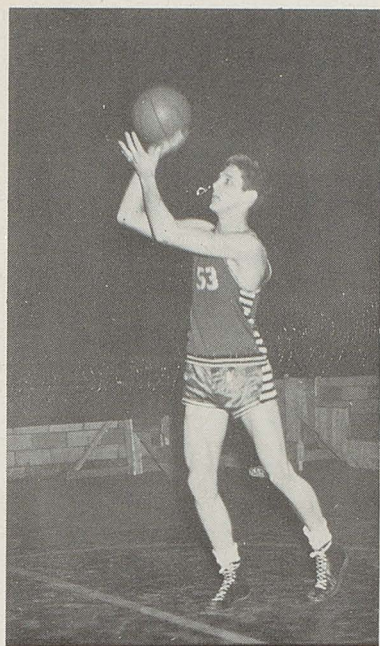


BASKETBALL SCHEDULE

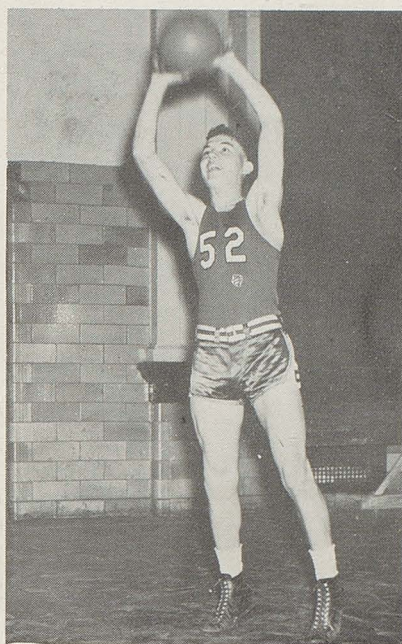
	We	They		We	They		We	They
November 24			December 18			January 21		
Clinton	21	48	Beach City	49	45	Navarre	36	47
December 3			December 21			January 22		
Brewster	24	60	Magnolia	60	45	Hartville	39	34
December 4			January 7			January 28		
Jackson	19	64	Uniontown	50	30	Greentown	44	43
December 10			January 8			January 29		
Middlebranch	26	62	Waynesburg	14	38	East Sparta	36	46
December 11			January 11			February 4		
Dundee	20	48	Dalton	18	54	East Canton	45	56
December 17			January 15 — St. Joseph			February 5		
Alumni	56	72	(Dover)	41	36	Marlboro	21	40



Compliments of Adam's Grocery



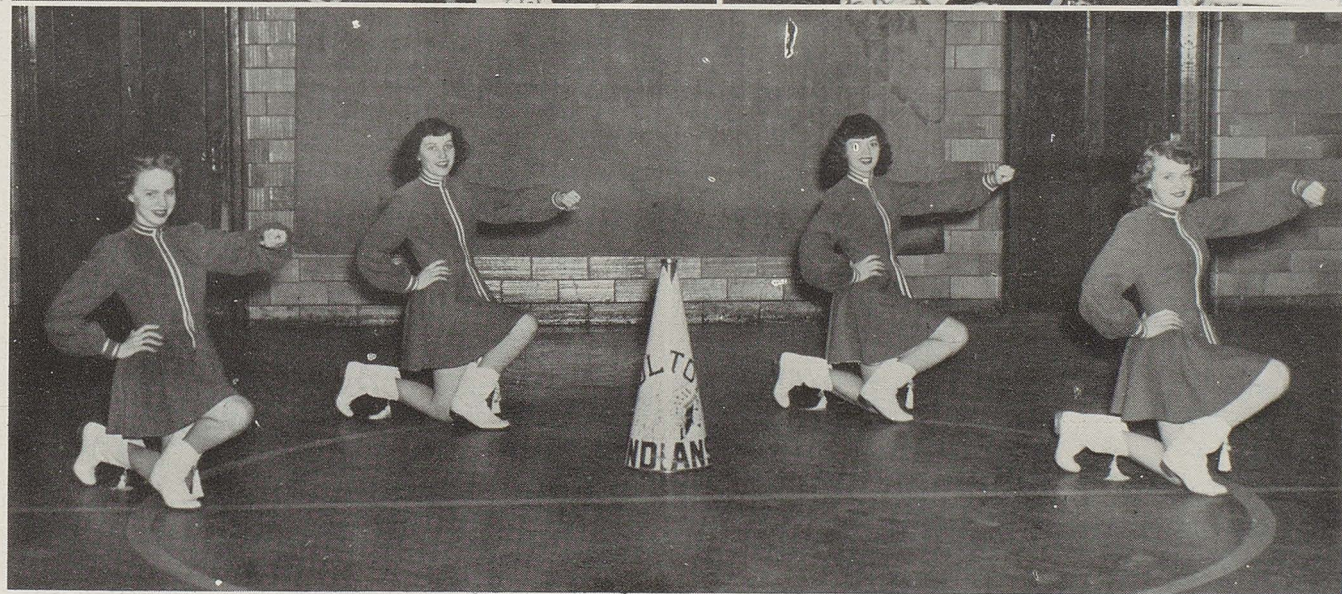
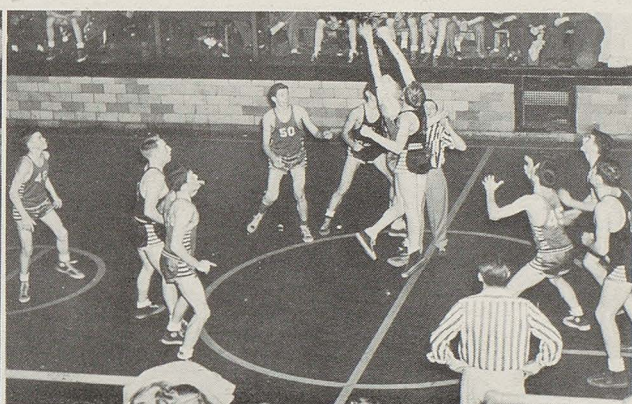
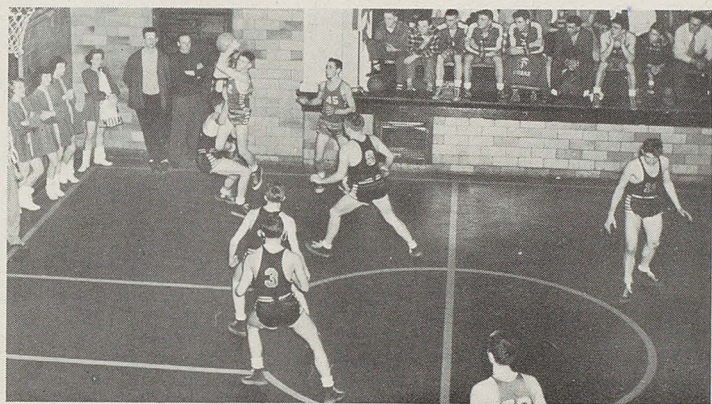
"DON"



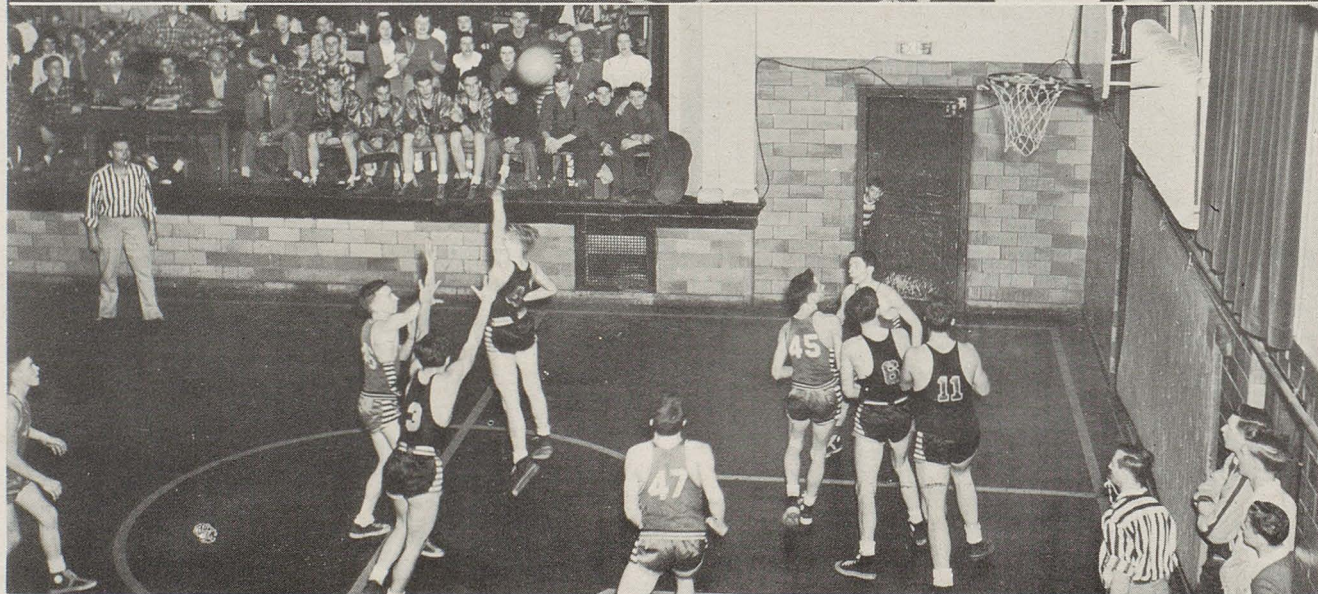
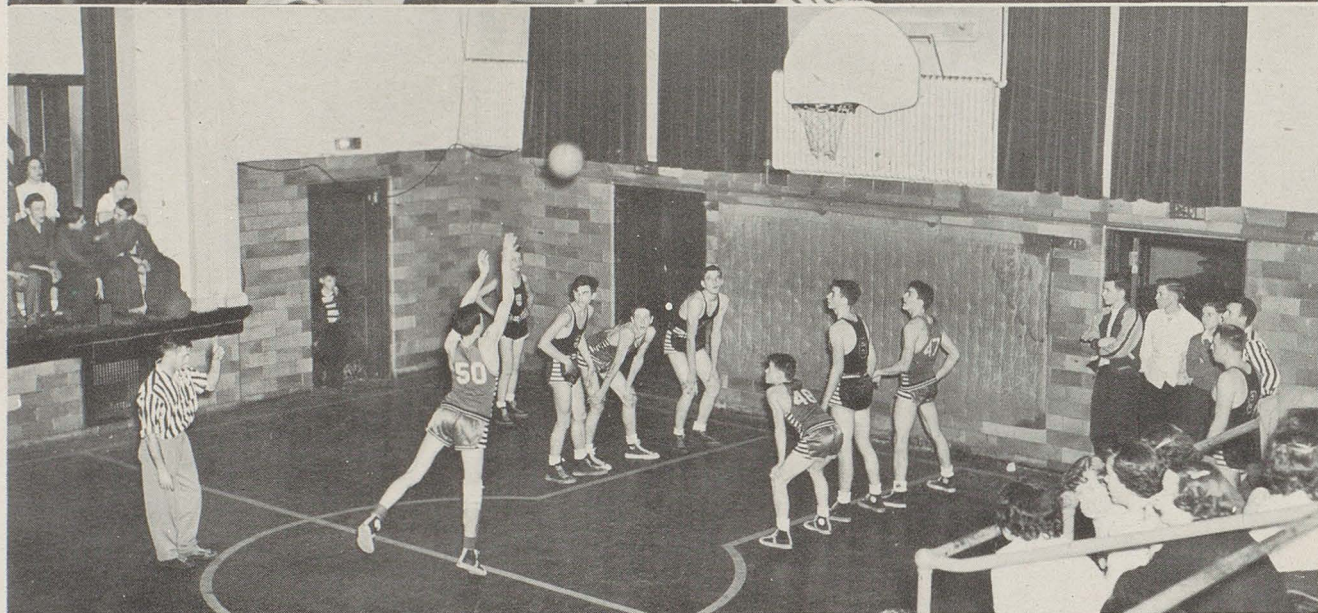
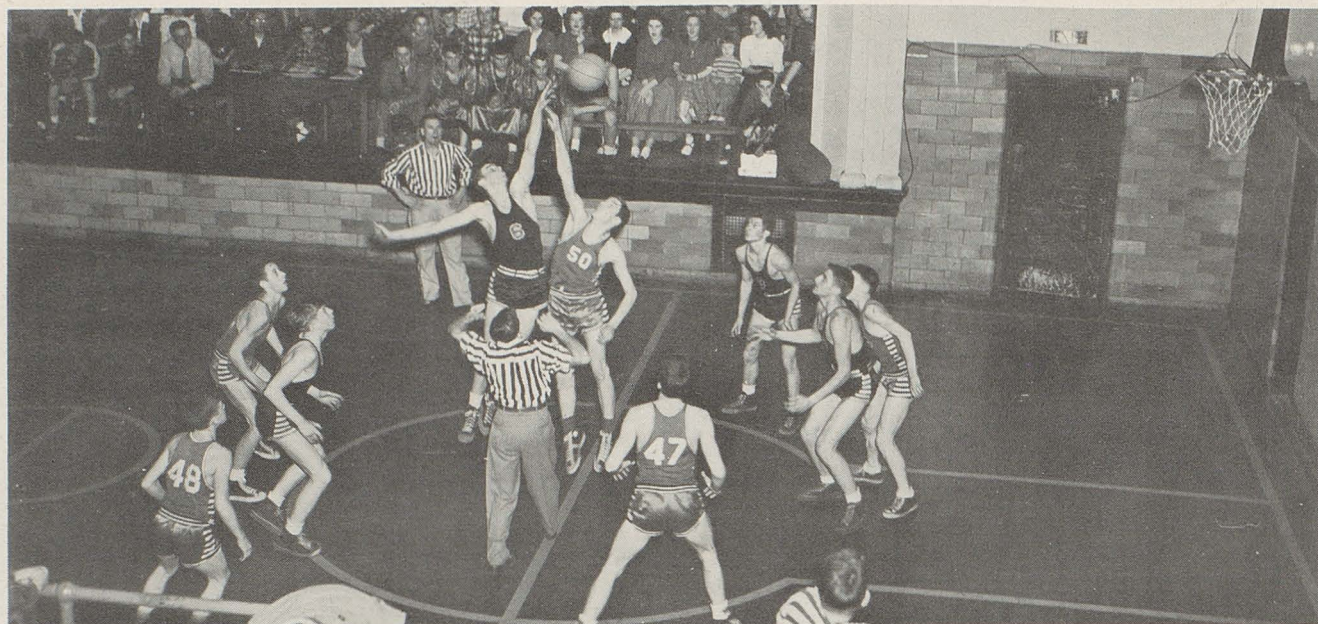
"RALPH"



"JOHN"



Compliments of Art McGrew, Druggist



Compliments of the Kendall Barber Shop

MUSIC





The senior band members want to thank Mr. Puffenberger for his untiring efforts in helping us have a successful year. We marched at all the football games, and put on good half-time shows. The band took part in the Band Preview at North Canton Stadium. After marching season we started our concert band. We had three successful concerts, December, February, and our Spring Concert. The seniors want to wish Mr. Puffenberger and the band the very best of luck in the year to come.



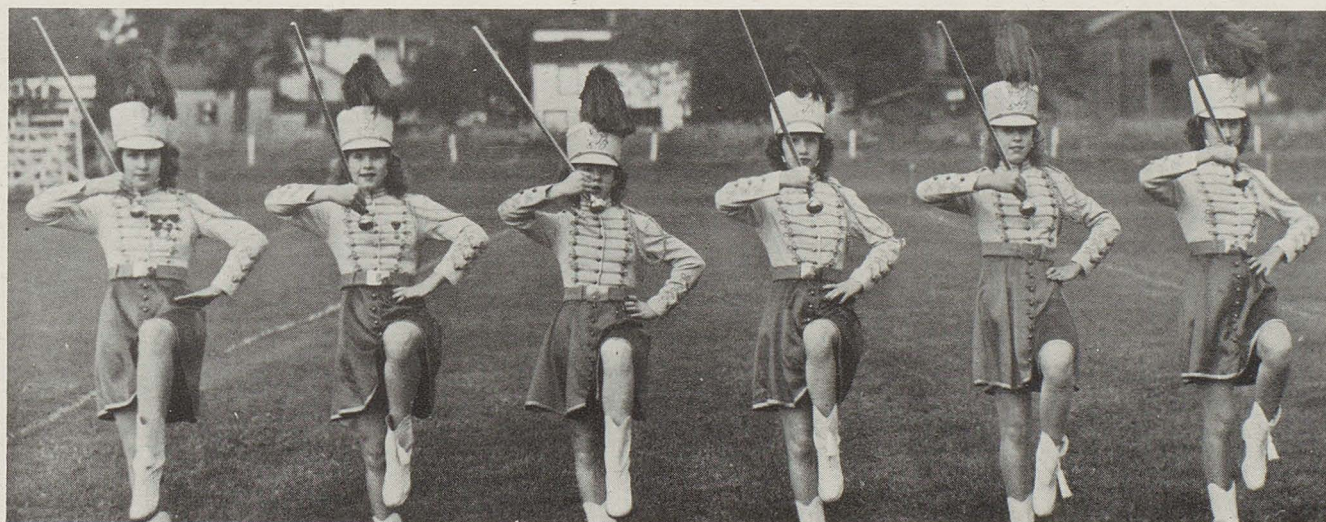
Compliments of R. E. Hardgrove



ORCHESTRA



GLEE CLUB



Mary Lou Janet Ann Patsy Janet Marjorie

Compliments of the Fulton Super Market

B A N D

S E N I O R S

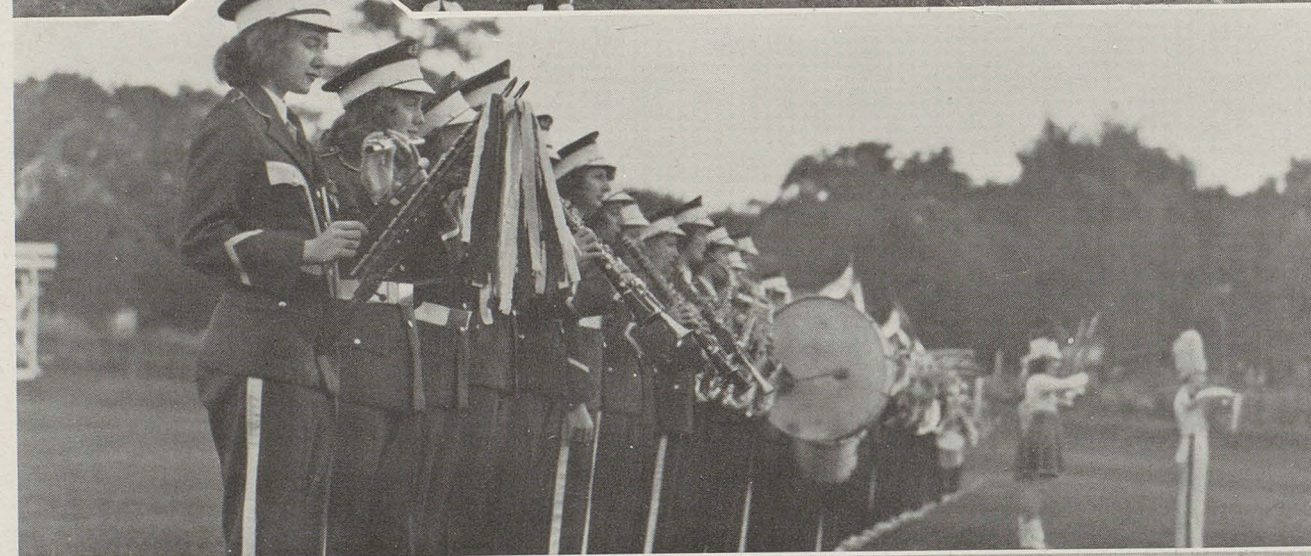
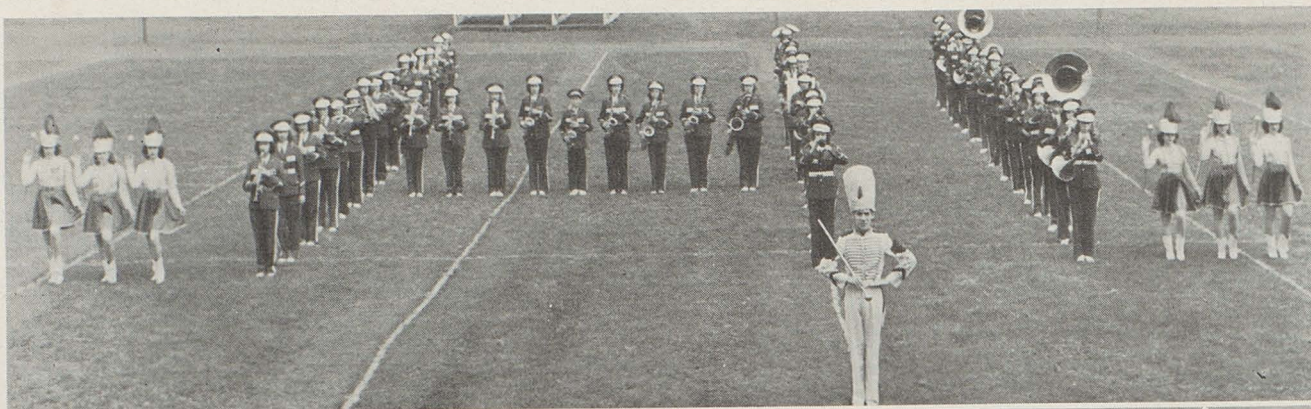


Compliments of the McMillen Hardware



SOLOS and ENSEMBLES





Compliments of the Fulton Flower Shop

ALUMNI

CLASS OF 1878

Frank A. Fisher
J. Wesley Biller
Frances Houck

CLASS OF 1880

Alden J. Kittinger
James J. Easley
Alpheus W. Jackson
Anna M. Daler
Louisa Eckroad
Philomena Steiner
Flora Bergold

CLASS OF 1881

Arthur E. Breece
Charles E. Freet
Charles E. Jackson
Wm. E. Kittinger
Thomas J. Leaser
Nathan C. Miller
B. B. Rayle
C. M. Shafer
Albert B. Wagner
Anna M. Brown
Maud Kirk

CLASS OF 1882

Reese H. Clark
Thomas D. Wagner
John C. Wiser
Albert B. Showers
Abbie J. Porter
Callie McLaughlin
Clara Moke

CLASS OF 1883

Ed. E. Wagner
Grace A. Kurtz
Florence Breece

CLASS OF 1884

E. L. Gilcher
Harry G. Kurtz
Ed. C. Miller
James E. Pomeroy
George F. Pollock
William H. Wagner
Louisa Forst

CLASS OF 1885

Ulysses Houriet
Hattie Buckmaster
Elva B. Danner
Cora B. Elliott
Nellie Hoover
Clara Stover

CLASS OF 1886

Edwin B. Robinson
T. J. LaCroix
James T. McLaughlin
Freeman A. Leaser
Ella May Wagner
Mary M. Houriet
Ella M. Murphy
Etta Kirk
Katie E. Henry

CLASS OF 1887

Phidello Smith
Fanny M. Breece
Alda L. Harmon
Katie M. Flynn
Ellen B. Leaver

CLASS OF 1888

Samuel R. Bachtel
Wm. P. Evans
D. E. McGee
John L. Liggett
Samuel G. Zimmerman
Slatthiel M. Liggett
Wm. H. Harter
John S. Hoover
Edmund D. Eckroad
Albert C. Ackerman
Effie F. Harter
Emma C. Donnenwirth
Chloe E. Kittinger
Emma A. Moke
Lucy N. Yockey

CLASS OF 1889

Arthur R. Albright
Samuel E. Elliot
George Fellmeth
Edward J. Hammer
Charles W. Kirk

Horace G. Kirk
Russell R. Robinson
Thomas M. Sterling
Anna Edwards
Zelina E. Houriet
Luella B. Landrock
Mary L. Liggett
Frankie E. Murphy
Bertha E. Porter
Myrtle M. Porter
Jennie Sandoe
Minnie F. Taggart
Flora Williams

CLASS OF 1890

George B. Fulton
Wesley F. Houk
Clement F. Housman
F. E. Mobley
Ada L. Jackson
Maud E. Porter
Lulu M. Porter
Belle Kirk
Emma E. Leaser
Clara L. Labbe
Anna L. Pomeroy
Minnie M. Oberlin

CLASS OF 1891

Harlev H. Robinson
Paul B. Patterson
Cyrus R. Myers
Annie Robinson
Florence E. Davis
Adella M. Donnenwirth
Nannie E. Group
Irene G. Porter

CLASS OF 1892

Herbert Shafer
Albert Fellmeth
Homer E. Moke
Dennis J. Jordan
John G. Schroeder
Charles Ruch
Charles C. Reinoehl
Otis G. Stover
Maggie M. Easley
Edith J. Elliot
Emma A. Forst
Edith H. Hoover
Lillian G. Schillinger
Jennie G. Kitt
Rosa B. Jackson
Alberta Schillinger

CLASS OF 1893

Archie A. Campbell
Truman Buckmaster
George P. Stover
Meta E. Buck
Grace Moore
Anna A. Eckert
Lizzie L. Fishley
Daisy M. Ford
Meta B. Housman
Jennie C. Streeby

CLASS OF 1894

George A. Hoover
John A. Fellmeth
John M. McLaughlin
Edwin O. Ackerman
Frank F. Buckmaster
Jonathan G. Lester
Erwin H. Porter
Flora Kitt
Emma P. Blank
Marguerite E. Breen
May Kirk
Cora A. Harkins
Hattie L. Schild
Helen Elliott
Elta M. Lutz

CLASS OF 1895

Henry R. Gilcher
Harry W. Stover
Early R. Porter
Alvin L. Simmons
Florence B. Edmonds
Ella M. Gill Elfholtz
Mary Lutz
Mattie E. Hammer
Iris C. McFarland
Clara D. Simmons
Grace Yost

CLASS OF 1896

Charles W. Buck

Harry H. Brown
Harty V. Schroeder
Ira W. Lerch
Carl K. Myers
Edward E. Porter
Grier P. Mobley
Homer H. Weaver
J. A. Lloyd Weaver
Jennie C. Myers
Helen M. Ernschaw
Mary B. Danner
Emma Limbach
O. Grace Fisher
Rosa A. Breen
Lottie L. Schillinger
Eva G. Bevard
Effie M. Simpson
Esther B. Harman
Mabel C. Kitt
Mary M. Lerch
Nellie M. Breece
Cordia M. Weir
Josephine M. Herman
Olive G. Bevard
Emma M. Eippert
G. Hattie Gill
Estella Weil
Eva R. Breece
Lottie A. Riehl

CLASS OF 1897

Samuel S. Biller
Edward J. Nichter
Carl L. McFarland
Edward R. Kelly
Walter P. Fisher
J. Kirk Ott
James E. Sandoe
Homer Naftzger
Abbie McLaughlin
Ella Simmons
Jennie Wilson
Sadie Yoder

CLASS OF 1898

Lloyd Harkins
Charles V. Kittinger
Wm. Parks
Burton N. Rohrer
Clarence Stump
Grace Baichley
Maud E. Maurer
Nettie O. Simmons
Elizabeth Sorn
Rosa M. Yock

CLASS OF 1899

Albert Nichter
Edward Donnenwirth
Charles Schild
Marjorie Donnenwirth
Cora E. Kreer
Ella Wagner
Nellie J. Kittinger
Mary Williams
Nettie Brown
Olive Schillinger
Caroline Leibenguth
Miriam D. Hoover
Louisa Bauman

CLASS OF 1900

Earl G. Mathie
Charles W. McLaughlin
Percy H. Harmon
Arthur McFarland
Wm. R. Myers
Lee A. Reinoehl
Dorothy N. Focht
Bertha L. Buck
Goldie M. Biller
Carrie B. Kirk
Mabel C. Myers
Nora Murray
C. Elsie Houriet
Catherine Sorn
Kittie Wilson
Maggie A. Moke
Ethel M. Hardgrove
Rosetta A. Links

CLASS OF 1901

C. Albert Breece
Ralph R. Bevard
Jay N. Braucher
Curtis S. Kittinger
M. Curtis Miller
Berlin B. Weil
L. Roy Miller
Ervin Donnenwirth

Edith E. Schrader
Ada B. Becker
Charlotte E. Swigart
Bertha H. Blank
Laura B. Myers
Pearl R. Myers
Pearl E. Kittinger
Rosalie C. Mayet
Frances A. Steiner
Florence Keniray

CLASS OF 1902

Wm. N. LaViers
Oscar W. Whitmyre
Gertrude A. Brown
Florence M. Clemens
Edith D. Foltz
Clara M. Eippert
Alice L. Griffith
Amelia M. Hiser
Louisa M. Paul

CLASS OF 1903

Walter B. Anderson
Ivan H. Wenger
Harry Wagner
Henry W. Simmonds
Pearl M. Housman
Emma McLaughlin
Hazel L. Miller
Lottie Murray

CLASS OF 1904

Lewis M. Shafer
Ernest R. Wolf
Frank M. Eippert
Harry N. Myers
John F. Links
Lelia Maud Oberlin
Ruby Shilling
Lilly M. Sorn
Aimee Hoover
Grace M. Kittinger
Luella R. Leibenguth

CLASS OF 1905

William H. Links
Elmer Downing
Purcell L. Hammer
Carrie B. Rhoades
Nellie B. Moulton

CLASS OF 1906

Carrie M. Ginther
Esther M. Groff
Cora Blanche Myers

CLASS OF 1907

W. Arnold Blank
Mahlon A. Shafer
Edgar M. Kauffman
Harry E. Foltz
Edna Brown
Gertrude Clay
Eva Lucile Pinefrock
Grace M. Labbe
Florence E. McGee
Edna E. Paul
Amanda J. Foltz
Frances M. Koehler
Lottie M. Stoner

CLASS OF 1908

Leo Brown
Floyd C. McLaughlin
William H. Sorn
Frank L. Oberlin
Gernard H. Bisker
John C. Koehler
Bessie Cameron Miller
Jennie S. Breck
Mabel E. Gettings

CLASS OF 1909

Ray O. Brinker
Ralph W. Pitz
Alvert A. Leininger
Dremond M. Sisler
Norma B. Smith
Abbie M. Krear
Zella Belle Groff
Mary C. Kurtz
Maud M. Moulton
Helen E. Labbe
Ila M. Miller
Maud Morrison

CLASS OF 1910

Clarence W. Brown
Arthur C. Blank
Arthur H. Foltz
Daniel Gaddis

Clyde F. McClintic
Russel A. Brand
James C. Leith
Helen Marian Miller
Mary M. Foltz
Vera A. Rhoades
Anna M. Otten
Ella Smith
Leda R. Brown
Belle Perskey

CLASS OF 1911

Donald Gordon Leith
Robert D. Fellmeth
James Lester Finefrock
James Henry McGee
Margaret M. Lehman
Hazel E. Kirk
Gladys D. Moyer
Jennie B. Shetler
Ruth Hilda Knight

CLASS OF 1912

Frank H. Bisker
Kenneth R. Hoffman
John A. Jones
Leo E. Koehler
Jacob A. Persky
Oakley M. Shafer
Frank J. Sours
Mabelle E. Clay
Barbara E. Griffith
Hazel Hauxwell
Esther E. Kurtz
Ethna M. Miller
Ora F. Miller
Vera Miller
Mary C. Vanderhoof

CLASS OF 1913

Ralph J. Blank
D. L. Huffman
Edward C. Labbe
Russel P. Ginther
Ray F. Hiser
Herbert Swigart
Clyde H. Butler
Claude H. Fashbaugh
Arnold C. Fisher
Archie R. Brinker
Andrew Duncan Miller
Russell J. Oberlin
John R. Sisler
Howard Stoner
Hazel Dell Foltz
Helen M. Miller
Anna Morrow
Marie Smith
Jennie E. Noot
Cora N. Putt

CLASS OF 1914

Virgil V. Braucher
Russell H. Rudy
Ralph D. Shook
Paul R. Swigart
Charles A. McLaughlin
Glennard Well
Weldon Willgohs
J. V. Dugan
Grace M. Anderson
Florence Brand
Vera M. Finefrock
Carrie Leininger
Katy W. Otten
Esther Presky
Kathryn M. Shafer
Velma B. Braucher
Alice E. Clay
Sarah J. LaViers

CLASS OF 1915

Roy R. Baughman
F. Whitney Evans
Carl H. Koeler
Nathan A. Miller
Fred P. Miller
Howard J. Richter
Milton M. Rhoades
Perlee C. Rohrer
Carl L. Smith
Grace Lauretta Daily
Ethel Frances Marsh
Portia Charmane Marsh
Dorothy Alys Miller
Gladys Lurille Miller
Clara Edna Monroe
Mildred Grace Oberlin

CLASS OF 1916

Arnold J. Labbe
Charles W. McGee
Sidney J. McGrew
Owen S. Rardon
Ellia M. Shembachler
Austin Liggett Vanderhoof
Edith E. Bauman
Edna B. Herron
Lois E. McGee
Worth C. Myers
Lydia F. Wittman

CLASS OF 1917

Pauline Steiner
Madeline Smith
Paul Fellmeth
Clifford Brown

CLASS OF 1918

Fannie McGee
Emma Baughman
Metta M. Miller
S. Irene Persky
Howard R. Pinefrock
Nelson Koehler
Lowell B. Streby
Burton W. Lytle
Edwin J. Evans
Marline Lawrence
H. J. Carter
Charles G. Rhoades
Dewey Greenhoe

CLASS OF 1919

Paul Blank
Glenn Heller
Leslie Simmons
Randall Kirtz
Nellie Botkins
Maurine Brown
Dorothy Fellmeth
Corine Moulton
Marian Rayl
Beulah Scott

CLASS OF 1920

Howard Evans
Reed Meckling
Lucile Hartz
Ruie Ketter
Cary Kirk
Grace Kellar
Hazel Schallenberger
Florence Troytman

CLASS OF 1921

Wendell Pinefrock
Oscar Kurtz
Hazel Davidson
Gwendolyn Woodworth
Eleanor Streby

CLASS OF 1922

Isabel Blank
Elizabeth Bilier
Ursula Gill
Floia Pilliez
Esther Fudge
Zenith Lawrence
Lillian Ruehling
Grace Stover
Grace Troyer
Porter Buck
Russell Humbert
Herman Fudge
Harry Kellar
Owen Housman
Welden Moke
Whitney Weil
Marion Dewalt

CLASS OF 1923

Dorothy C. Franz
Anna McGee
Gertrude Ruehling
Zelma Whitman
Stanley Fudge
Ralph Heppert

CLASS OF 1924

Margaret Albright
Florence Geier
Jessie Packer
Isabelle Rayl
Mary Schembechler
Ethyl Troyer
Cary Wagner
Preston Lawrence
Thirl Lawrence
Carl Suderow
LaVerne Streby
Donald Simmons

CLASS OF 1925

Gladys Burget
Dorothy Pinefrock
Lorraine Frederick
Lois Gerth
Dorothy Greenhoe
Gertrude Hammer
Margaret Jackson
Margaret Overdear
Mary Paffle
May Reichenbach
Evelyn Simmons
Dorothy Stockert

Vera Tritt
Lois Young
Alma Schalm
Catherine Steiher
Robert Albright
Wilbur Bilier
Harrison Foust
George Fudge
Roy Geis
John Gill
Edwin Guess
Lawrence Hall
Nevin Jones
Harold Kurtz
Howard Mayer
Maurice Mitchell
Mac Shilling
Arden Surbey
John Storrie
George Geier

CLASS OF 1926

Lavenda Baughman
Alma Beougher
Treva Eicher
Dorothy Johnson
Florine Kurtz
Helen Packard
Inez Philpot
Lillian McGee
Alma Bauman
Wilbur Bauman
Ralph Burget
Robert Evans
Calvin Franklin
Edwin Oser
Leona Williams

CLASS OF 1927

Helen Arntz
Bessie Burget
Sadie Diller
Garnet Doxsee
Grace Fletcher
Thelma Geier
Dorothy Heller
Dorothy McGee
Hazel Whitman
Chester Hunold
Lester Daily
Virgil Etling
Marvia Greenhoe
Walter Wagner
Eugene Young

CLASS OF 1928

Elizabeth Kurtz
Mary Willmott
Lillian Shilling
Deltha Fishnick
Karl Shook
Carey M. Gordon
John Stitz
Edwin Bauman
Henry Ruehling
Glenn Ripley
William Evans
Richard Fellmeth
David Baughman
Orold Seifert
Ethel Yager

CLASS OF 1929

Wilma Bauman
Harriet Jones
Ruth Troyer
Camilla Youngblood
Hermine Hessedence
Lois Mathie
Allea West
Richard Lerch
Louis Wagner
William Wagner
Ralph Packer
John Kick
William Oser
Ronald Renninger
Vincent Stitz
Robert Moke
Oscar Calome

CLASS OF 1930

Esther Dye
Elizabeth Hessedence
Geraldine Reichenbach
Norma Frake
Ruth Hessedence
Catherine Suderow
Grace Hall
Marie Krutky
Sylvia Williams
Paul Harget
Cloyd Lawrence
Robert Ketter
Raymond Oser

CLASS OF 1931

John Smith
Louise Buchman
Mildred DeWalt
Mary Kiplinger
Emily Mathie
Irene Roby
Hazel Gill
Ruth Guess
Mabelle Johnson
Edith Troyer
Geynell Lusk

Helen V. Donnenwirth
Dorthea Dunn
Mamie Reichenbach
Harold Shetler
Delmar Culp
Earl Luthe
Harry Meibert
Harry Williams
Paul Ellis
Lester Etling
Paul Young
Wilbur Fellmeth

CLASS OF 1932

Pearl E. Cormany
Louis M. Everhart
Helen M. Franklin
Ruth C. Haag
Margaret Kick
Violet B. Kellet
Marie C. Nichter
Leone Reineohl
Catherine Sanders
Marie A. Stitz
Daniel D. Carmany
Delmar M. Pinefrock
Perlee O. Franz
James A. Gabor
Fred A. Gill
Wayne Greene
George K. Hoover
Peter M. Hessedence
Roger Ketter
Raymond King
Keith Lawrence
Harold R. Lewis
Alfred Mansfield
William E. McFarland
Richard G. Reighart
Paul E. Seifert
Joseph W. Seifert
Lewis M. Stitz
Paul F. Stitz
Donald P. Swope
Lester E. Yager
Melvin A. Youngblood
Walter E. Gesaman

CLASS OF 1933

Cecil Rardon
Lloyd Shaffer
John Henning
Mary Moke
Paul Ripley
Marie Smith
George Schuman
Florence Kulp
James Pinefrock
Nina Dunn
George Wentch
Irene Clapper
Dorothy Clapper
Boyd Donaldson
Harry Dye
Evelyn Reichenbach
John George
Helen Hall
William Fishnick
Grace Adams
Willard Jackman
Josephine Krutky
Harry Hall
Rita Sibila
Harold Hartel
Cleo Stump
Charles Toth
Lillian Drew
Delmar Jones
Helen Wittman
Karl Youngblood
Delores Schalm
Ruth Poetter

CLASS OF 1934

Robert Arntz
Catherine Baughman
Lela Bean
Herman Beougher
Cathryn Blanchard
Helen Bredenberg
Esther Calame
John Carmany
Mary Colopy
Margaret Dickerhoof
Bernard Drew
William Evans
Hilda Eicher
William Pinefrock
Donald Hoover
Gordan Jones
John Stenger
George Gaber
Charles Gadd
Helen Gainey
Blanche Galloway
Roy Galloway
Helen Gozdan
Vivian Greene
Herbert Klever
Paul Kolesar
Eugene Lerch
Park Lewis
William Myers
Marjorie Matson

Ralph Nettle
Maxine Reighart
Raymond Rohr
Alvin Ruehling
Robert Shetler
Eugene Sliger
Vincent Stephan
Edward Troyer
Ruth Wertz
Vivian Williams
Gerald Yager
William Yant
Gerald West
Wilma Wentch
Joseph Willmott
Val Yant
Olivia Youngblood
Melba Hartel
Avanell Henning

CLASS OF 1935

Beatrice Arman
Raymond Baughman
Richard Bauman
Florence Beougher
Vernell Baird
Louis Colopy
Phyllis Denison
Donald DeWalt
Toma Ellis
William Felliez
Richard Franz
Thelma Gadd
Paul Gill
Edna Ginther
Thomas Griffith
Sidney Hampshire
Donald Hare
Lloyd Hatt
Jeanette Jones
Russell Luthie
Robert Kellar
Marian Kemmpel
Harold Kiplinger
Richard Kaser
Angeline Marthy
Miriam Miller
Wilma Rohr
Lewis Sisler
Mary Scoville
Eleanor Seifert
Jeanette Sibila
Robert Stump
Mildred Schott
Thomas Stitz
Stella Seckman
Ted Willmott
Helen Wieman
Dorothy Wittman
Mildred Young
Paul Zabadah

CLASS OF 1936

Earl Baughman
John Baughman
Dick Eicher
Robert Fellmeth
Ralph Frase
Wilbur George
Walter Gesaman
Zane Gilcher
Emerson Gilmor
Elmer Gindlesberger
Steve Gozdan
Otis Hampshire
Ralph Harget
Dwight Hartel
Vernon Killinger
Stanley Mansfield
Clarence Palmer
Francis Rohr
Floyd Schalm
Russell Semelesberger
George Simmons
Carson Sisler
Glen Sliger
Adrian Trachsel
Joseph Zabadah
Ronald Wittman
Hazel Bosley
Pearl Britton
Ruth Chovan
Madelyn Diehl
Thelma Dunn
Betty Gels
Anna Geiser
Edith Gerhart
Eva Gordon
Irene Kiffaber
Betty Kittinger
Rhea Jane Kull
Betty Jane Lewis
Betty Miller
Marie Netling
Eva Oser
Mary Ott
Annabelle Reighart
Fannie Rohler
Leona Schott
Matilda Sedar
Evelyn Sorn
Margaret Stump
Louise Suderow
Mary Suderow

Dora Wolfe

CLASS OF 1937

Helen Blanchard
James Gilmor
Irene Laughlin
Robert Baughman
Margaret Carver
Herman Buie
Jillian Dahler
John Drew
Ethel Forrer
Jay Felix
Catherine Fellmeth
Lois Fuller
Harry Harget
Dorothy Harbaugh
Raymond Johnson
Earl Stoughton
Vernon Williams
Fern Hartel
Roy Johnson
Telford Killinger
Amy Hessedence
William Krutky
Pauline Kostelnick
Donald Lerch
Betty Martin
Richard Myers
Elizabeth King
Cornelius McGrew
Marilyn Lerch
Ralph Miller
Irene Masgrove
Mary Ellen Mathie
Glenn Oser
Ola Rehm
Michael Penzenik
Vernon Renninger
Mary Stenger
Glenn Rohler
Evelyn Wieman
Emil Seifert
Jane Swisher
Bernice Wolfe
Harold Smith
Jean Youngblood
Charles Smith
William Shook
Newton Carmany

CLASS OF 1938

Florence Arntz
Richard Burwell
Betty Burzlaff
Edward Campbell
Robert Clay
Gerturde Danko
Ford Dickerhoof
Evelyn Doxsee
Earl Dunn
Mike Durinsky
Nell Pinefrock
Geneva Fletcher
Edith Gesaman
Irene Hatt
Alan Hobbs
Wellington Ketler
Chester Kieffaber
Gladys Kiplinger
Zorka Markovich
Dale McClellan
Ward Miller
Paul Oser
Audrey Reichenbach
Delbert Rohr
Floyd Sawyer
Verla Schalm
Chester Schellenger
Pauline Schott
Lorin Schultz
Delores Sibila
Margaret Simmons
Mary Simon
Lloyd Smith
Pauline Stenger
Forest Stump, Jr.
Robert Swigart
Betty Williams
Mary Williams
Ann Zabadah

CLASS OF 1939

Francis Arman
Louise Bruegger
John Clay
Mary Dunn
Roy Dunn
Harry Eicher
Doris Elsnor
Betty Etling
William Fellmeth, Jr.
Robert Fischnich
Raymond Fisher
Robert Fisher
Maxine Galloway
Russell Geiser
Ruth Gill
Robert Hanks
Gerald Hoeft
Merle Jackson
Evelyn Kaser

Sarah Koppes
Dean Kull
Mildred Martin
Dolores Miller
Lillias Miller
Faye Ott
Donald Potter
William Potter
Elizabeth Reid
Thaires Schwendiman
Anna Sedar
Jean Sisler
Ruth Smith
Margaret Stenger
Joe Stitz
Mary Suchka
Madeline Vaughn
Violet Weller
Ada White
Earl Wolfe

CLASS OF 1940

Harry Baab
John Blank
Buryl Bloomfield
Jack Boyd
Hazel Buie
Marjorie Burwell
Roger Cassidy
Arwood Dickerhoof
Carl Drew
James Dugan
Glenn Ellis
Dorothy Fisher
Hilda Gainey
Jeanne Gascoyne
Dorothy Getz
Mabel Gibbs
William Gibbs
Harriet Gilcher
Joseph Gozdon
Irene Graham
Robert Hansel
Roland Hansel
Ilo Harbaugh
Minnetta Hessendence
Germaine Klein
Clarence Kobie
Ralph Laughlin
Jack Lehman
Mary Lewis
Michael Markovich
Wesley Morrison
Ruth Oser
Elsie Peyton
Russell Rafeld
Glenn Rhoades
Jack Roach
Harold Rohr
Richard Shetler
Robert Shook
Edward Vaughn

CLASS OF 1941

Hyla Athey
Jeanne Baab
Avalyn Bodkin
Vernon Bolgrin
Constance Butler
Alice Carmany
Dale Carmany
Robert Carmany
Sylvia Cormany
Richard Dittmer
Ruth Donnenwirth
Jack Dugan
Ila Dunn
Evelyn Gainey
Doris Gaudaur
Pauline Greene
Alice Harget
Evelyn Head
Francis Hill
Ward Hitchcock
John Holly
Richard Jenkins
Vernon Johnson
Junior Ketler
Russell Ketler
Noel Ketler
Harriet Kittinger
Anna Klein
John Knoch
Ralph Kracker
Lewis Kull
Clifford Lindsay
John Maxhimer
Herbert Miller
Lewis Miller
Raymond Nichter
Faye Reighart
Don Ringley
Charles Rhodes
Alma Rohr
Elsie Sawyer
Robert Sibila
John Sisler
Duane Stanford
Anton Stenger
Norma Stephan
Edwin Suderow
Robert White

CLASS OF 1942

Dorothy Arman
Curt Bedlion
Robert Lohr
Eva Biblis
Melvin Boyd
Ruth Brenner
Dowell Cross
Naomi Dittmer
Gene Fellmeth
Melba Fischnich

Ruth Hallett
Hilda Hahn
Dorothy Hansel
Gale Hartel
George Higginbotham
Galen Hostetler
Mildred Kiplinger
Edwin Kobie
Beatrice Koppes
Twila Lehman
James Lerch
Joseph McCabe
Robert Nettle
Patricia Parker
Hazel Pitz
Margaret Rohler
Thomas Rohr
Vernon Rohr
Lois Schwendiman
Eva Senff
Garnet Shoemaker
Alvin Simmons
Robert Stephan
Michael Suchka
Don Swigart
Connie Swisher
Don Vaughn

CLASS OF 1943

Clifford Bachtel
Martha Barthlow
Emily Bedlion
Jeanette Burwell
Jay Butler
Myrtle Cormany
Adolin Cottrell
Madolin Cottrell
George Dittmer
Junior Everhart
Robert Foxx
Betty Geiger
Euna Gindlesberger
Dorothy Hartong
Marion Heppert
Douglas Holly
Helen Johnson
Robert Johnson
Betty Klein
Eva Klein
Rebecca Kull
Jessie Lepley
Edith Levers
Henry Lindsay
Henry Meglich
Robert Miller
Harry Myers
Alice Netling
Jean Reiter
Don Rohr
Merle Rohr
Virginia Rose
Jean Shook

William Sibila
Ruth Sliger
Richard Stephan
Mary Stoner
Harold Wagner
William White
Olive Williams
Lois Wuchter

CLASS OF 1944

Lawrence Arman
Anne Babick
Darrel Cogan
Jean Fletcher
Eldus Fox
Helen Fricke
Audrey Gaudaur
Delores Geiser
Ruth Gibbs
Dorothy Gill
Betty Hill
Betty Hiltbrand
Roy Hostetler
Loah Lautenschlager
Delores Lindsay
Iris Long
Cecelia Paulus
Verla Rohr
Jean Rose
June Rose
Ralph Scheetz
Stella Schroeder
Ruth Shoemaker
Thelma Shoemaker
Dorothy Shook
Lloyd Shull
John Stitz
Frank Stump
Anna Suchka
Richard Swigart
Earl Wood
James Youngblood

CLASS OF 1945

Betty Barthlow
Shirley Burwell
Betty Crowe
Keith Gainey
Marvin Gordon
Virginia Hansel
Dale Hardgrove
Thais King
Flo Kurtz
Ellen Lautzenhiser
Viola Lohr
Robert Martin
Jim Maxhimer
Harriet McArdle
Joseph McArdle
William Miller
Robert Neidert

John Parker
Robert Powell
Mildred Roby
Rosella Rohr
Jean Selch
Ethel Shook
Lois Sibila
Gertrude Sickman
Gene Suderow
Ann Sullivan
Dora Wagner
Oran Wagner
Monica Youngblood
Richard Zabadah

CLASS OF 1946

Betty Albright
Alfred Barber
Terry Bremkamp
Rita Bruegger
Evelyn Brumitt
Leo Buchtel
Lorna Mae Butler
Clarence Dittmer, Jr.
John Foxx
Clifford Gaudaur
Frank Gindlesberger
June Hatfield
Evelyn Hessendence
Dolly Hill
Mary Hiltbrand
Robert Kittinger
Helen Lindsay
Frank Lockhart
Nedra Long
Donald Pitz
Robert Ries
Glenn Rohr
George Suchka
Betty Sullivan
Leora Hunter
Marion Thomas
Joseph Murphy

CLASS OF 1947

Stanley Suderow
Clara Wagner
Alice Schwartz
Wanda Smith
Helen Martin
Grace Lyons
Mary Belasco
Lucille Long
Sally Schroeder
Sam Pavkov
Carol Baab
Laurabelle Mays
Helen Kiko
Robert Paulus
Warren Ryder
Doris Greenawalt
James Duncan

Maurine Brumitt
Rita Boak
Patti Bauman
Jo Ellen Aronhalt
Leonard Dittmer
Paul Rhoades
David Stanford
Alice Sibila
Patty Gill
Barbara Miller
Byron Kohn
Joanne Hahn
Barbara Youngblood
Arthur Norris, Jr.
James Kurtz
Phyllis Kobie
James Lehman
Mary Boak
Carl Huddleston
William Demharther
Edna Sickman
James Schwendiman
Thomas Humble
Charles Noel
George Grubb
Ted Hardgrove
Charles Stump

CLASS OF 1948

Donald Albright
Wanda Boser
Delbert Burwell
James Butler
Faye Decker
Merle Gordon
Jack Greenhoe
George Hann
Elizabeth Hardgrove
Patricia Hardgrove
Mary Kurtz
Glenn Lautzenhiser
Isabelle Lockhart
Edna Lohr
Donald Ludwick
Ruth Moore
Edward Murphy
Donald Neidert
Winona Nicholas
Betty Ott
Vera Pavkov
Julia Rhoades
Mary Rhoades
Mary Schwartz
Mabel Shook
Warren Shook
Robert Shull
Carol Simmons
Norma Jean Smith
Hazel Mae Street
Leerie Summers
Carol Wittman



JUNE

JANUARY

- 3 It's back to school we go. Wonder who was setting off the firecrackers.
- 7 Uniontown game and another win for the Indians. (50-30)
- 8 Fulton lost the first game in 1949 to Waynesburg. (38-14)
- 11 We were defeated by Dalton. (54-18)
- 14 Juniors ordered their class rings.
- 15 St. Joseph came to Fulton to leave with a loss. (41-36)
- 21 Indians played at Navarre. Fulton 47 Navarre 70
- 22 Hartville Blue Streaks were defeated by the Indians, 39-34.
- 28 Played at Greentown and won, 44-43.
- 29 East Sparta 48 Fulton 38. The band played a concert for the Band Clinic held at our school.

FEBRUARY

- 4 East Canton game. Senior Scholarship Test at Canton South.
- 5 The Indians play their last game of the 1948-1949 schedule.
- 15 Annual February Band Concert.
- 16-17-19-23-24-26 Basketball Tournament at Massillon.
- 28 Stark County Literary Contest.

MARCH

- 5 Stark County Solo and Ensemble Contest.
- 12 District Solo and Ensemble Contest.
- 19 Home Ec. Dance—Stark County Band Clinic at East Canton.
- 25 Dance Revue—Benefit of Athletic and General School Fund.

APRIL

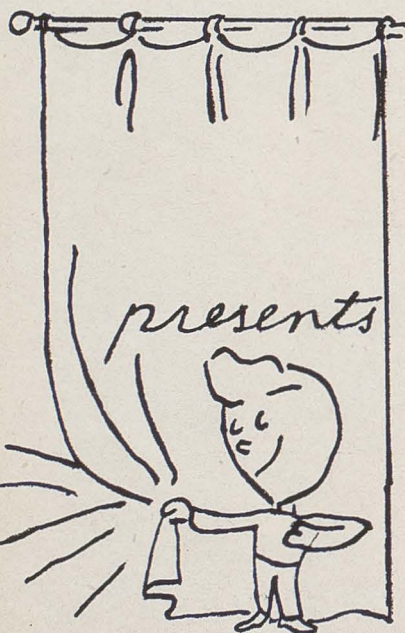
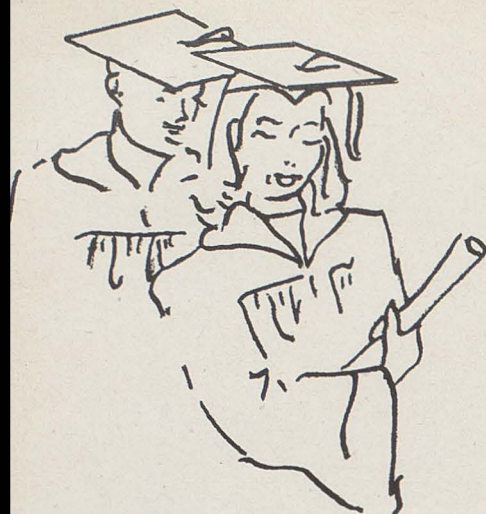
- 8 Preliminary District and State Scholarship Contest.
- 9 District Band Contest.
- 14 Athletic Banquet.
- 21 Book Revue
- 22 Senior Play.
- 23 Jr.-Sr. Banquet.
- 30 State Solo and Ensemble Contest.

MAY

- 3 Spring Concert.
- 6 School Fair.
- 13 Y-Teen Mother's Tea.
- 14 State Band Contest.
- 19 State Eighth Grade Test.
- 29 Baccalaureate.

JUNE

- 2 Commencement.
- 3 Last day of school, ending the 1948-1949 school year.



GRADES



VIRGIL SUMMERS
Principal





JOSIAH MAXWELL



CORA CARR



IRENE McKEE



LAVONA CORLEY

**GRADE SCHOOL
FACULTY**



DOROTHY SUMMERS



PAULINE WEIGLE



LAVINA MOSGROVE



ETHEL KNIGHT



EIGHTH GRADE

Back Row: Richard Reffner, June Brigham, Lester Decker, Ann Gainey, William Lorenz, Richard Hartman, William Fricke, Shirley Schumacher, Barbara Weaver, Doris Dye, Wayne Douglas, Clifford Smith.

Middle Row: Harold Ott, Byron Aughenbach, Connie Long, Norma Gerstenslager, Gary Williams, Cleda Bruegger, Janet Hammock, Sherlock Rudersmith, Shirley Rudersmith, Shirley Hiltbrandt, Edward Norris, Mary Lyons, Mr. Summers.

Front Row: Betty Markers, Raymond Weber, Glenn Reichenbach, Betty Straharsky, Patricia Wallace, Robert Knotts, Gerald Bogart, Richard Harbaugh, James Neidert, Allan Notch, Barbara Nichols, Alvin Notch, Lorene DeWalt.

Absent: Eva Moore.



SEVENTH GRADE

Back Row: Gertrude Kerstetter, Richard Comepeau, Lee Hammock, Duane DeWalt, Marvin Sullivan, Paul Shonk, Richard Fischnich, Karl Gilcher, Robert Duncan.

Middle Row: Teddy Jolliff, Steve Markus, Marilyn Evans, Patsy Ulrich, Janet Miller, Glen Mauger, Mary Bogart, Mary Jo Greene, Paul Stockert.

Front Row: Haley Perry, Joan Brigham, Patty Lou Taylor, Mary Ann Schroeder, James Ebert, Jess Williams, Lois Cormany, Ronald Leaver, Genelea Foxx.

Compliments of the Waldorf Dairy



SIXTH GRADE

Back Row: Thomas Fox, Mary Lou Gaddis, Betty Ries, Marilyn Simons, John Weaver, Clifton Smith, Ruth Ann Fricke, Barbara Hague, Roberta Roop, Linda Lee Gesamen, Gerald Gerstenslager, Ruth Ann Workinger.

Middle Row: Mrs. Carr, Ronald McClay, Shirley Ludwick, Russell Mitchell, Betty Jo Miller, Robert Bergdorf, Joyce Kraft, Susan Hann, Nicholas Notch, Ralph Moore, Charles Keefauber.

Front Row: Donald Douglas, Barbara Crowe, Joanne Swisher, Calvin Franklin, Marvin Hardgrove, Joan Gesamen, Patricia May, William Stockert, James Reffner, Ronald Boyer, Eleanor Thompson.

Absent: Charlotte Bennage.



FIFTH GRADE

Back Row: Carol Miller, Nancy Dye, James Hiltbrand, Sandra Moore, Roberta Gay, Dorcas Ochsenbein, Gerald Semelsberger, Floyd Kirkpatrick, Shirley Gesamen, Corella Workinger.

Middle Row: Mrs. McKee, Thomas Garrett, Melvin Mansfield, Ruth Bogart, Roger Fricke, Linda Matthews, Ronald Huffman, Harlan Weygandt, David Kanack, Barbara Zimmerman.

Front Row: Beverly Barber, David Duncan, Ann McMillen, George Reffner, Doris DeWalt, Marlene Greene, Alberta Ott, Joan Nelson, Esther Hann, Gary Matthews.

Compliments of Ketter's Restaurant



FOURTH GRADE

Back Row: Junior Weber, Ada Jean Baum, Sandra Neal, Dick Stoughton, Elizabeth Siber, Sue Cuthbert, Judi Moke, Judy Fudge, Tommy Reighart, Henry Bergdorf, Virginia Foxx, Mrs. Corley.

Middle Row: George Bennage, Ann Fletcher, Richard Norris, John Gesaman, Lois Stockert, Lois Hoover, Marie LeBerth, Robert Gindlesberger, Jerry Nicholas, Robert Blachly, Alic Markus.

Front Row: Robert Mansfield, Buddy Davis, John Smith, Richard Swisher, Bobby Byrd, Carol Otto, Mary Ann Decker, Jack Shonk, Richard Gindlesberger, Rosella Hartman, Sharon Gilcher.



THIRD GRADE

Back Row: Delores Bennage, Mary Ellen Brigham, Miguel Guzman, Lowell Gesaman, Albert Coolie, Clifford Miller, Harry Taylor, Kenneth Sick, Carl Smith, Janet Cormany, Buddy Hartman, Joyce Ries, Roger Fox, Mrs. Summers.

Middle Row: Larry Notch, Jerry Duncan, Rita Volk, Bill Simmons, Gerald Hammock, Dennis Johnson, Randall Woodall, Jimmy Selch, Joel Schimke, Dale Ferryman, Ruth Parker, Patty Nelson.

Front Row: Judy Semelsberger, Herbert Blachly, Ronald Hague, Robert Reffner, Carson Ripley, Kenneth Fricke, Ronald Reis, Judy Gesaman, Gary Leaver, Lyle Kirkpatrick, Elaine Kerstetter, David Queen, Donna Huffman.

Absent: Betty Williams, Richard Flake, John Tippel.

Compliments of Max Rupe



SECOND GRADE

Back Row: Richard Huffman, Rita Hann, Judy Mann, Billy Swigert, Tommy Norris, David Nichols, Tommy Nicholas, Clifford Mansfield, Marion Weygandt, Jimmy Finefrock, Leslie Riblet, Richard Dye, Donald Decker.

Middle Row: Mrs. Weigle, Joanne Gentzler, Linda Suderow, Linda Kay Ott, Tommy Otto, Bobby Woodall, Jacqueline Little, Dorothy Parker, Jane Reid, Carole Rupe, Gordon Gay, Nyda Noftsinger, Mrs. Mosgrove.

Front Row: Carol Boyle, Donald Miller, Karen Ellis, Jennie Hancock, Phyllis Baum, Kenneth Waggoner, Richard Schmachtenberger, Wanda Lee Hofsteter, Billy Greenawalt, Barbara McVicker, Glen Weber, Georgia Ann Ketler, Raymond Ferryman, Robert Garrett.



FIRST GRADE

Back Row: Mrs. Mosgrove, Linda Nicholas, Ronnie Williams, Sandra Hammock, Marlene Parker, Louise Ramsey, Bill Rennie, Charles Haas, Alex Markus, James Fellmeth, Gary Hoeft, Maryalice Moore, Ralph Blachly, Bruce Gesaman, Cora Boser, Mrs. Knight.

Middle Row: Judy Lee Snyder, Marvin Sawyer, Marilyn Ann Greene, Vernon Siber, Larry Johnson, Ellen Schimke, Dickie Weigand, Marion Fricke, Helen Stockert, Denny Lee Smail, Tommy Ray Gindlesberger, Ronald Keith Neidert, Sundra Lee Franklin.

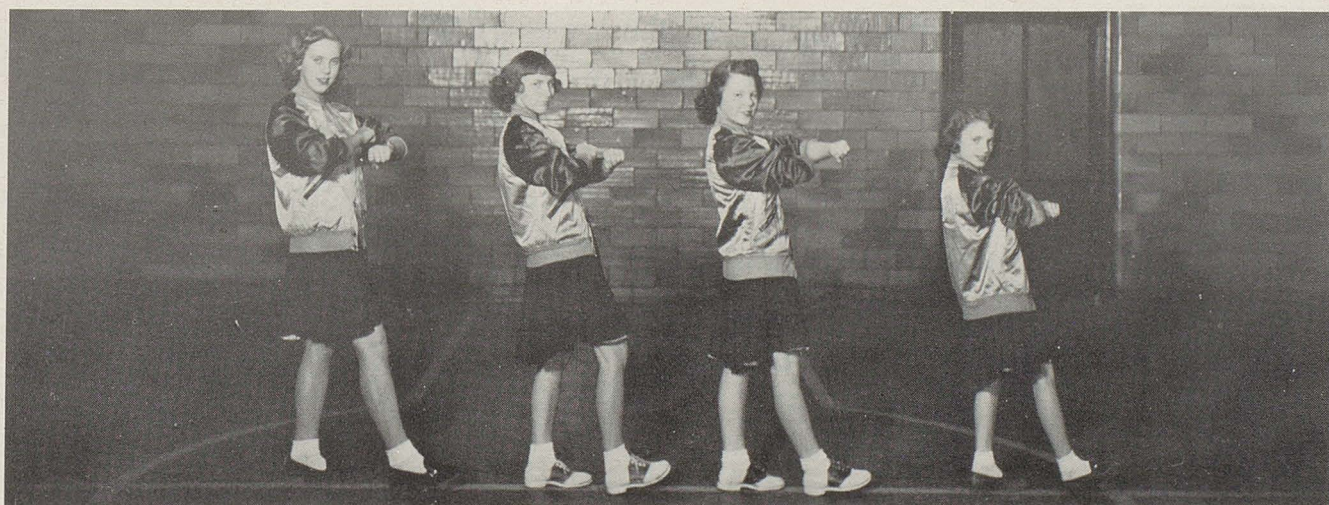
First Row: Junior Garrett, Kenny McCullough, Donald Workinger, Bobby Wagner, Ruth Ann Inghram, David Markovich, Duane Weygandt, Betty Jane Fudge, Jimmy Waggoner, Tommy Gesaman, Doreen Cuthbert, Bobby Taylor, Mary Ellen Weidner, Donald Shearl, Billy Wittman.



GRADE SCHOOL CHORUS



BASKETBALL TEAM



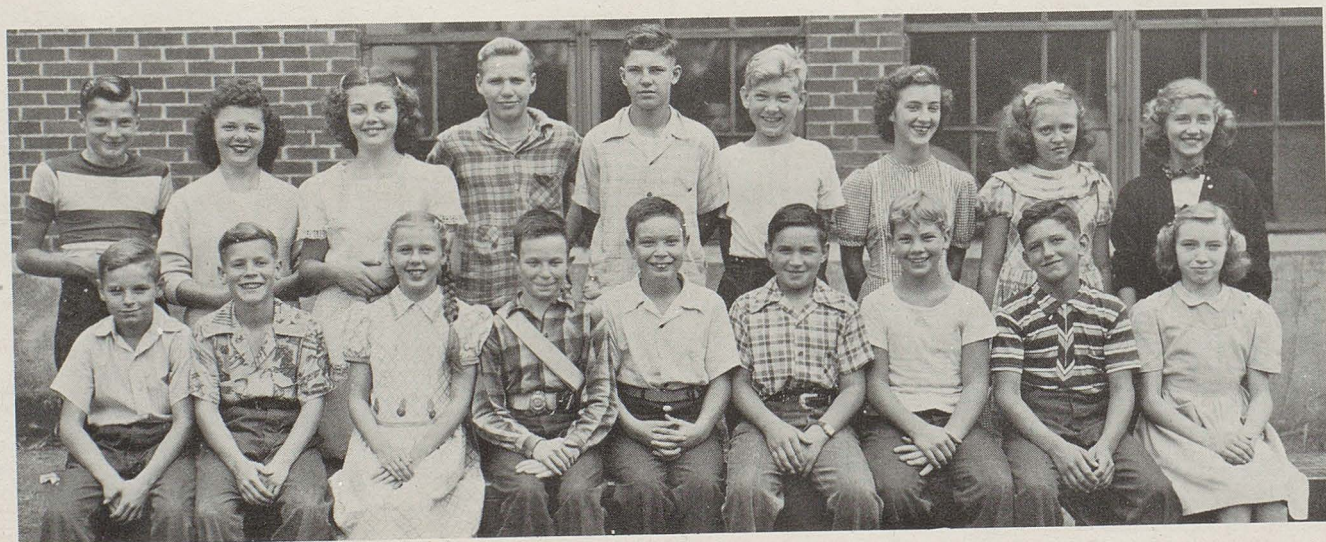
CHEERLEADERS



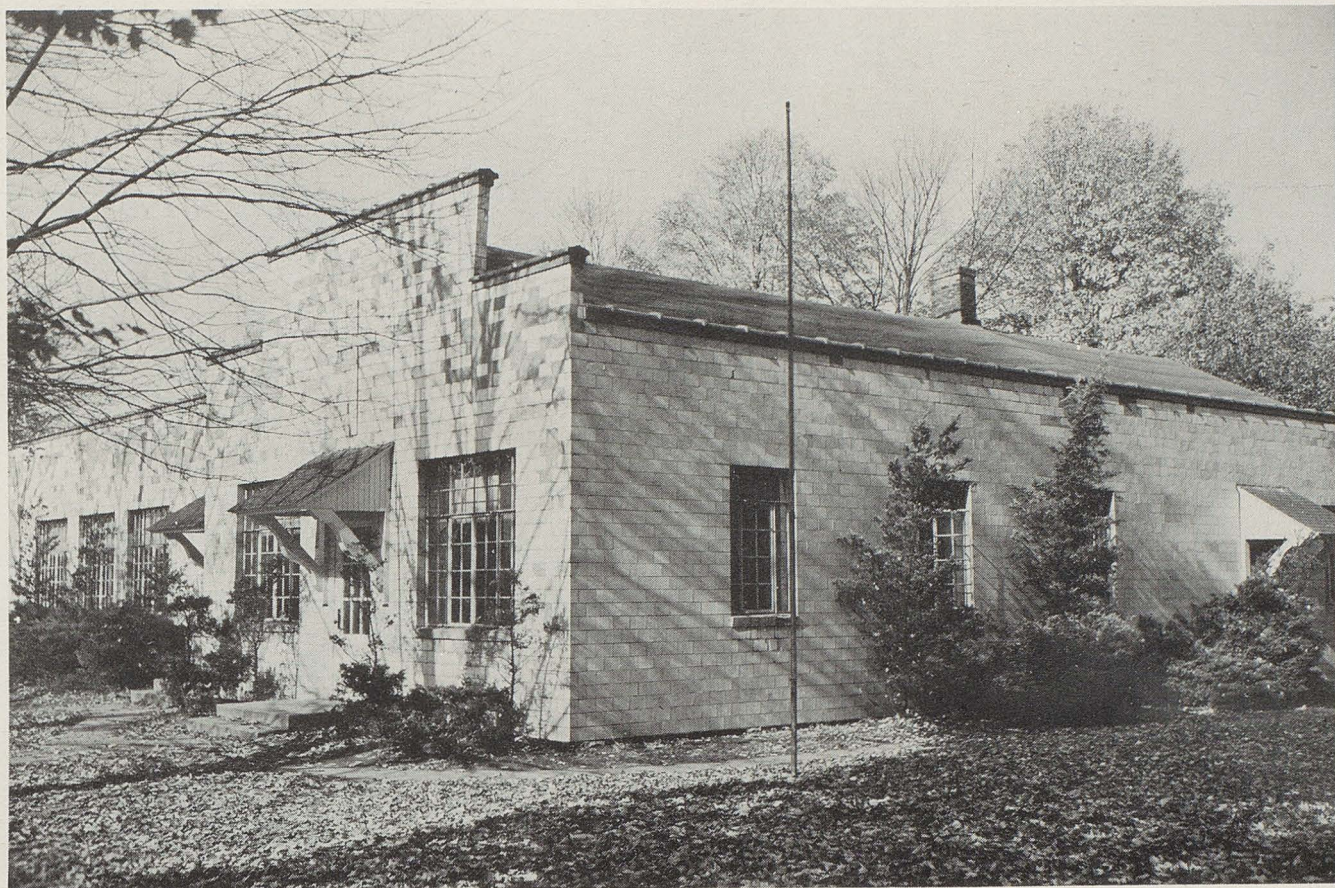
CADET BAND



CLARINET CLASS



JUNIOR POLICE



ST. PHILLIPS and JAMES PAROCHIAL SCHOOL

THE REVEREND FATHER MAURER

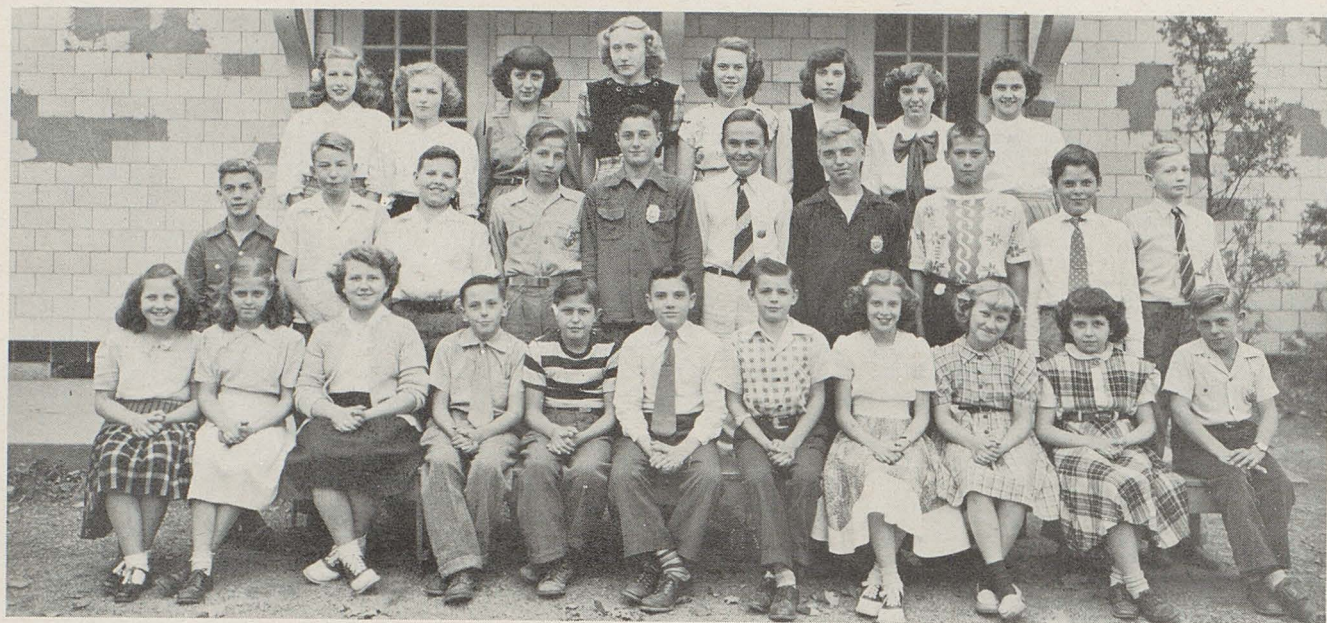


FACULTY

SISTER MARY EWALDA

SISTER MARY CLAUDIUS

SISTER MARY LEONCIA

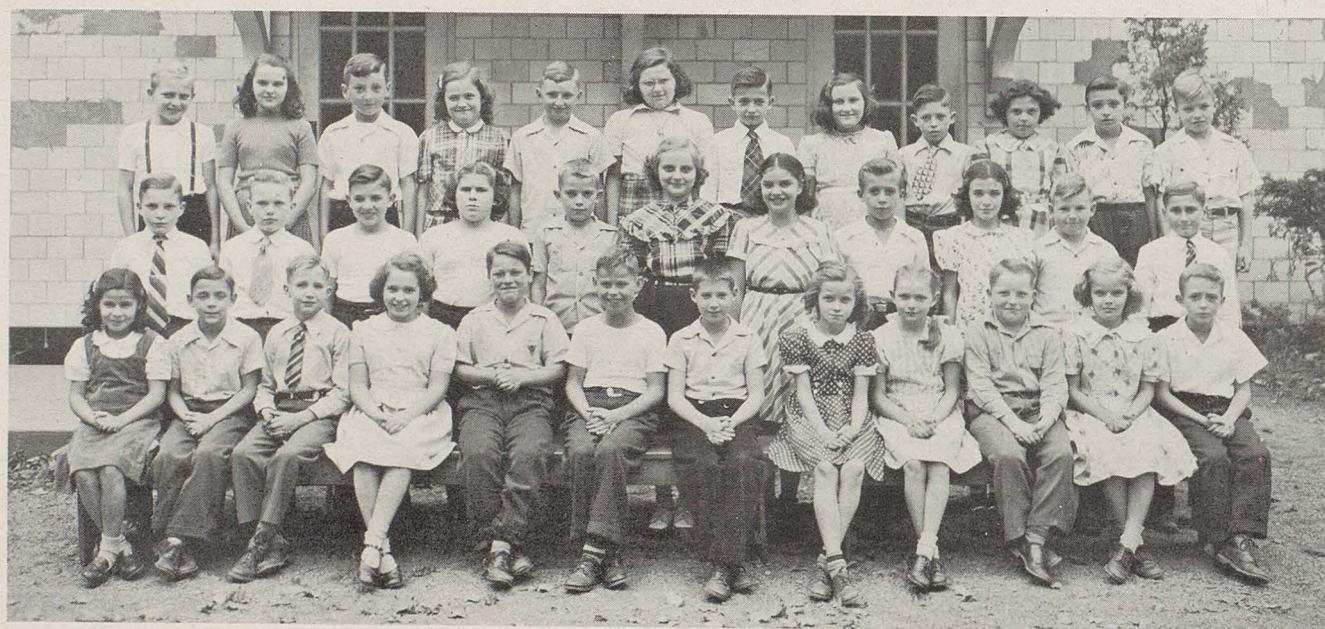


SIXTH, SEVENTH AND EIGHTH GRADES

Back Row: Janet Gill, Marilyn Ferdinand, Rosemary McArdle, Janet Geier, Janet Hardgrove, Mary Martin, Jean Schembechler, Doris Steiner.

Middle Row: Marvin Hunt, Dick Shaefer, John Hammer, Larry Jastraub, Robert Williams, George Ott, Bert Boak, Lewis Etling, Albert Ott, Raymond Shiplett.

Front Row: Janet Heather, Peggy Boak, Sally Hammer, Benny Bloomfield, Jack Yanke, Jerry McAvinew, Robert Oser, Mary Whisler, Nancy Stephan, Rosemarie Ilg, James Rohr.



THIRD, FOURTH AND FIFTH GRADES

Back Row: Robert Kolar, Rita Young, Dale Stephen, Charlotte Ott, Robert Schettze, Joanne Workman, Vincent Orr, Judy Heather, Tommy Culp, Rita Bloomfield, John Shondel, Tommy Berger.

Middle Row: David Ferdinand, Walter Talalas, Raymond Schembechler, Barbara Hunt, Freddie Remark, Frances Arnold, Carol McAvinew, Jerry McDonald, Betty Gill, Robert Schaffer, Lauren Rohr.

Front Row: Albertine Seifert, Raymond Oser, Robert Gill, Joanne Appleman, Donald Young, Larry Etling, Clarence Workman, Marlene Freed, Gretchen Geier, Leonard Hunt, Lucille Boak, Tommy McDonald.

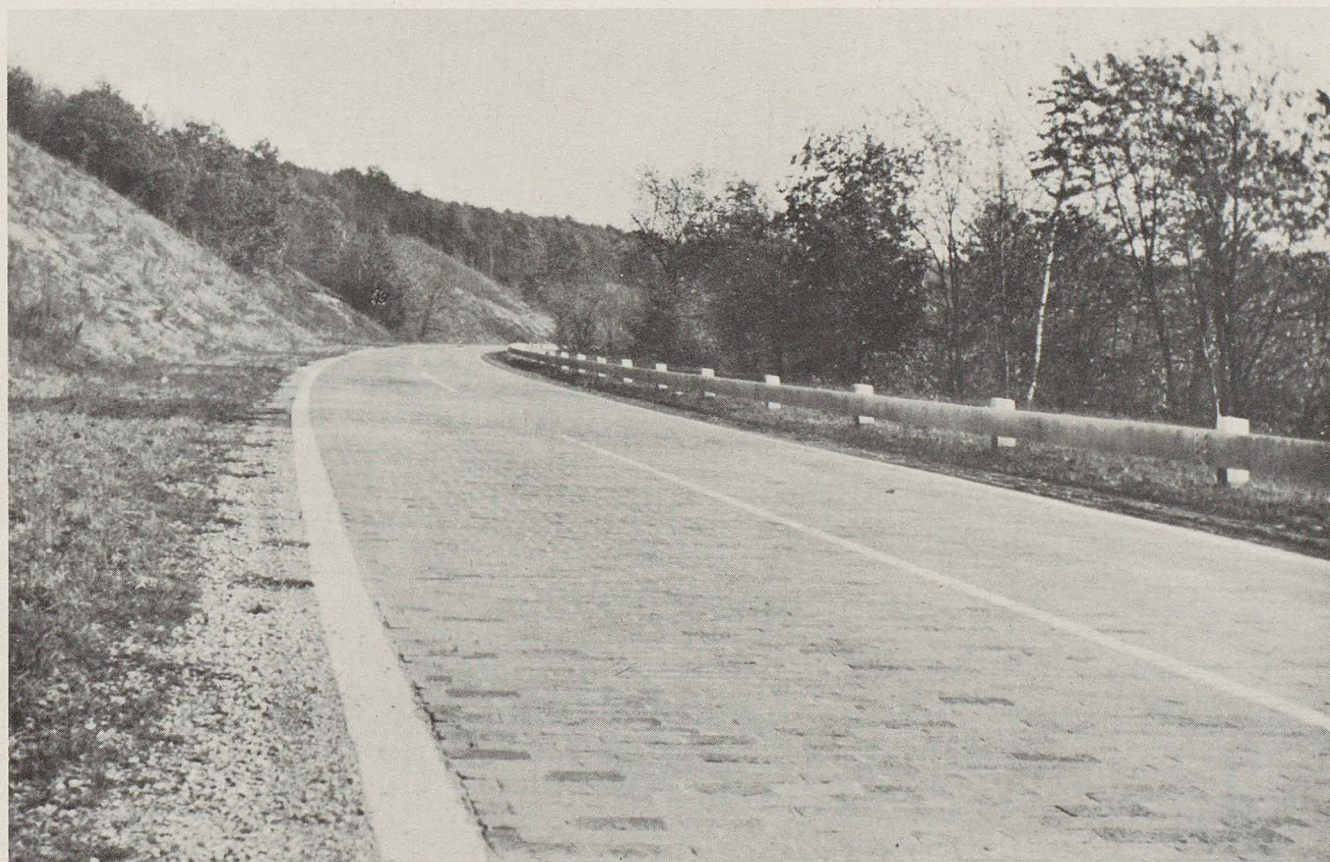


FIRST AND SECOND GRADES

Back Row: Terry Wilmot, Betty Hunt, Joanne Hunt, James Stitz, Carrol Ann Linhart, Michael Gozden, Ann Wyinwick, Philip Maynard, Joyce Talalas, Martha Ann Blank.

Middle Row: Roseanne Oser, Annette Schalmo, Gary Stephan, Linda Youngblood, Mary Garman, Raymond Yurick, John Kolar, Mary Ann Kirk, David Perkins.

Front Row: Louise Seifert, Billy Williams, Judy Berger, Allen Yingling, Ellen Ilg, Gary Heather, Doris Boak, Bobby Rohr, Mary Lou Stitz.



Compliments of

DAVIS STUDIO

Compliments of the following Massillon Business Firms and Congratulations to the Class of '49



A. & P. Super Market

Becker Hardware Co.

Blatz Shoe Store

Blaumeiser Hardware Co.

Brighten-Up Store, Inc.

Cope Bros.

Jos. Goldenfield and Co.

C. O. Finefrock Co.

The First National Bank
in Massillon

The First Savings & Loan Co.

M. O'Neil Co.

The Ideal Company

Jean Frocks, Inc.

Linde's

Pietzcher's, Inc.

McLain Grocery Co.

Massillon Hardware Co.

Massillon Retail Grocers &
Meat Dealers

Massillon Savings & Loan Co.

Meek-Segner Co.

Ohio-Merchants Trust Co.

J. C. Penney Co.

Peoples Federal Savings &
Loan Association

Reliable Office Supply Co.

Sears, Roebuck & Co.

Segel's

D. M. Siff Shoe Co.

Spuhler's, Inc.

State Bank Company

Stark Dry Goods Co.

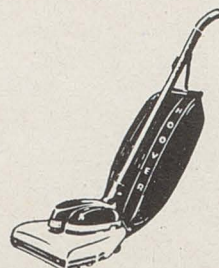
Stuhldreher's Cigar Store

Workingman's Store

You'll be happier



with a



HOOVER

W. E. GILCHER LUMBER COMPANY

Mule Hide Roofing

**Lumber • Sash • Doors
Millwork**

PHONE
RES. 2256
BUS. 2337

FELLMETH SODA BAR and RESTAURANT

*"Home of the famous
Ham Sandwich"*

Television for All

AGENCY FOR SCHICK SHAVERS

**The only
way to shave**

Excellent Graduation Gift

Compliments of
KANNER'S

32 Lincoln Way E.



*Massillon's Leading
Men's Clothing Store*


BEST WISHES

**to the
CLASS
of
1949**



**THE
STERN AND MANN
COMPANY**

Canton, Ohio

Compliments
of

**THE
COMMERCIAL PHOTOLITH
CO.**

137 First Street, N. E.
Massillon, Ohio

Stark Glass Co.

Glass Contractors

Stark County's Largest Distributor
of Large Mantle Mirrors
GLASS BATH ROOMS



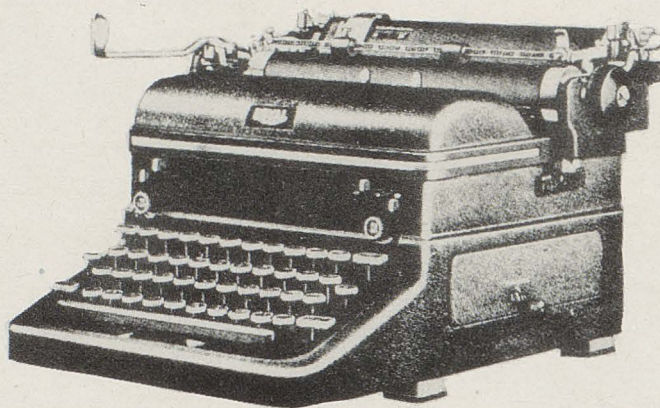
409 Erie Street N.

Phone 4175

MASSILLON, OHIO

BENSON TYPEWRITER CO.

R O Y A L



STARK COUNTY DEALER

336 Fourth Street, N. W.

Canton, Ohio

THE CERES SUPPLY CO., INC.

ROBERT R. HESS AND SON

Manufacturers of

CERES FRESH FEEDS

HIGHER QUALITY FEEDS FOR LIVESTOCK AND POULTRY

Millers of

**High Grade Pastry and Blended Family Flour
Made From YOUR Wheat**

Farm Supplies

Carload Shippers and Receiver of Grain

Tremont Ave. W. at B. & O. R. R.

Phone 5111

MASSILLON, OHIO

Established 1888

Phone 3-9131

THE A. C. EYNON PLUMBING COMPANY

**Plumbing, Heating, Ventilating
and
Air Conditioning Engineers**

**236 WALNUT AVENUE, N. E.
CANTON, OHIO**

Compliments
of

Florian P. Cuthbert, M.D.

SCHALMO IMPLEMENT

**McCormick - Deering
Tractors and Implements**



Refrigeration

New Idea Spreaders

•

**Repairs
Fence and Farm Hardware**

Compliments of

HOFSTETER BROS.

DON'T FORGET!

**"WE BUY FURS, HIDES,
AND WOOL"**

**THE KOONS WALLPAPER
CO.**

*Wallpaper • Window Shades
Linoleum*

55 N. ERIE

DIAL 4434

GREEN'S MUSIC STORE

*A Complete Music Service
Since 1920*



**We Repair—Buy—and Trade
New and Used Instruments**

We Teach All Band Instruments

124 Cleveland Ave. S. W. Phone 4-3522
CANTON 2, OHIO

**We congratulate you,
graduates and wish you success.**



THE EVENING INDEPENDENT

CONGRATULATIONS
to the Class
of 1949

BLOOMFIELD CHEVROLET

SOUTH CANAL STREET

Canal Fulton's Most Modern Auto Service

A—Always
B—Buy
C—Chevrolet

Compliments of

GRANT TOTTEN COMPANY

(Wholesale Only)

Everything for the Roofing, Heating
and Sheet Metal Dealer

Phones 41812 — 45639

1215 - 19 McKINLEY AVE., S. W.

CANTON, OHIO

The Exchange Bank Co.
DEPOSITS INSURED

Canal Fulton, Ohio

Dial 5281

Paul R. Swigart
Funeral Director

Invalid Car Service

Monuments

Compliments of
Friends
from Canton

LLOYD W. SMAIL
AUTHORIZED
TAPPAN DEALER
"The Best"
in
Gas Appliances

OSER'S
GIANT ELM DAIRY
Pasteurized Products

The Sanitary Laundry
and Dry Cleaning
421 First Street, N. E. Massillon, Ohio

Plenty of Parking Space

Drive in off the street *One block south of*
to our front door *St. Mary's Church*

Compliments of
Texaco Gas Station
ROUTE No. 21
Canal Fulton, Ohio

A. C. MAY, Proprietor

W. B. MYERS
FORD CARS and TRUCKS

PHONE 2333

JACK SWARTZ'S
Home-Dressed Meats

BEEF • PORK
GOOD ALL-PORK SAUSAGE
HOME-RENDERED LARD
YOUNG TENDER BEEF

Compliments of
NEIDERT AND SONS

DISTRIBUTORS OF
JOHN DEERE FARMING
IMPLEMENTS

Phone 2577

Canal Fulton, Ohio

Compliments of

**William A. Wagner
HYBRID SEED CORN**

•

Canal Fulton, Ohio

Compliments of

GILCHER LUMBER CO.

•

BOB SWIGART

Manager

Phone 2222

Compliments of

**HART'S
FROZEN FOOD LOCKER
and
GROCERY**

Phone 2301

Compliments of

DeLuxe Dry Cleaning

55 FOREST AVE., S. E.

Downtown Store
42 North Erie

Phone 8404

MASSILLON, OHIO

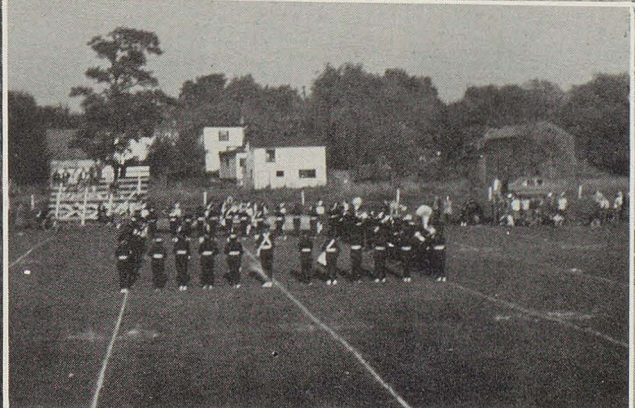
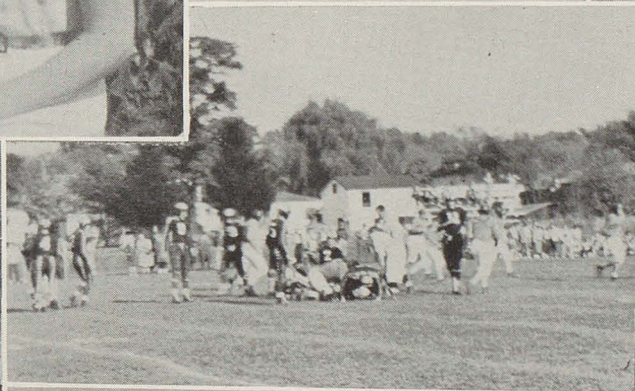
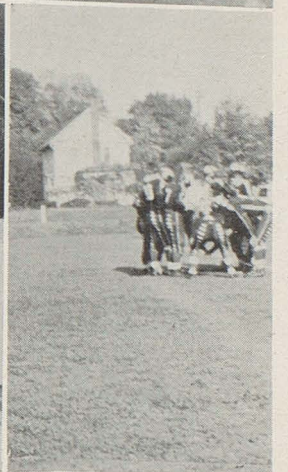
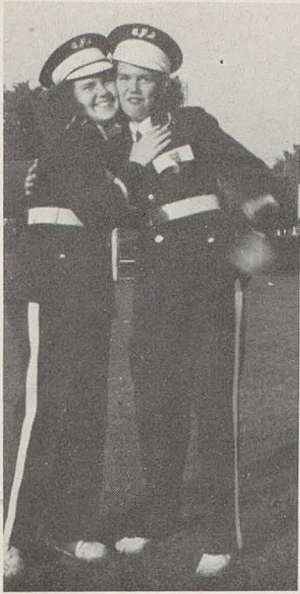
Compliments of

C. R. KURTZ

GAS AND OIL HEATING

E. E. PARKER MOTOR CO.





Compliments of

Stone Bros. Clothes

Large Selection of Suits For The Graduates

**SPORT SLACKS — JACKETS
COATS — FURNISHINGS**

104 Lincoln Way W. Massillon, O.

Compliments of

Miller Auto Supply Inc.

243

S. Erie

**FOR FINE QUALITY
EVERYTHING IN SHOES**

Economy Shoe Store

Massillon's Quality Shoe Store
PHONE 7203 109 LINCOLN WAY W.

Compliments of

THE COMMUNITY STORE

Radio - Television - Electric Appliances

MASSILLON, O. PHONE 21543

WHY TAKE CHANCES

In not belonging to the motor car
owners guardian. Cost only \$10.00
per year.

THE MASSILLON AUTOMOBILE CLUB

Compliments of

MASSILLON

RETAIL

JEWELERS

*The Modern Home Is
All Electric*

THE OHIO PUBLIC SERVICE CO.

MASSILLON, OHIO

MORRISON MUSIC SERVICE

*Pianos, Accordians, String Instruments
Sheet Music*

**220 LINCOLN WAY, EAST
MASSILLON, OHIO**

HOME OF HART SCHAFFNER & MARX

**Good Clothes
Stetson and Mallory Hats
Men's and Boys' Outfitters
Toms Toggery**

T. J. STEBICK

505 Tuscarawas Ave. Barberton, O.

*Compliments of
Friends
from Barberton*

BEST — WISHES — TO — THE — 49'ERS

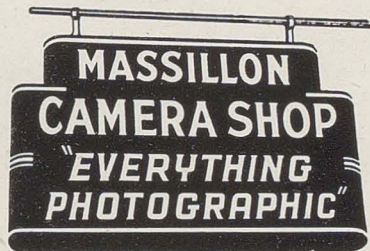
FROM

**YOUR WESTINGHOUSE STORE
YOUR SPORTING GOODS STORE
YOUR ZANDER'S AND RUSS' HARDWARE**

**STARK COUNTY'S
ONLY DRIVE-IN HARDWARE**

CANAL FULTON

PHONE 2397



44 1ST ST.N.E. MASSILLON, OHIO

READY TO SERVE YOUR NEEDS IN

- Cameras
- Movies
- Projectors
- Sound Equipment
- Film and Supplies

*"When it comes to photography
come to us"*

M. H. MARTIN CO.

MASSILLON, OHIO

Phone 8586

BELL HOWELL HOME

MOVIE HEADQUARTERS



Compliments of

Village Restaurant

Home Cooked Foods

Sandwiches — Pies — Dinners

SMITH'S BETTER ICE CREAM

Candy — Soft Drinks

**H. NELSON
OWNER**

Phone

2441

Compliments of

THE OBERLIN DAIRY

Pasteurized Dairy Products

"QUALITY SERVES YOU BEST"

Phone Massillon 4666

308 20th St. N. W.

Compliments of

MASSILLON FLORISTS

Say All With Flowers

KALLEKER'S GREENHOUSE

BENDER'S GREENHOUSE

HI-WAY GREENHOUSE

BREDIGES GREENHOUSE

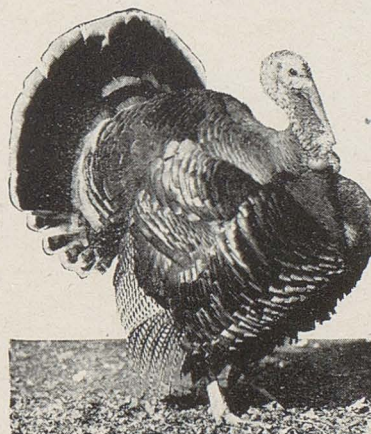
FISHER FLOWERS

TOM COYNE FLOWERS

BAILEY'S FLOWERS

Compliments of

LEY BROS. TURKEY FARM



**OHIO TENDER GROWN
TURKEY'S**

Phone

2712

Canal Fulton, Ohio

*Congratulations, Seniors of Fulton Hi
For the goal, you have just met.
We wish you, success and happiness
In your future years, "You Bet."*

Lawrence's Grocery

On The Square

North Lawrence, Ohio

Compliments of

COXEY'S TAVERN

* * *

NORTH LAWRENCE

ARMAN'S

**Kitchen-Cooked
Potato Chips**

MADE FRESH DAILY

Phone

2862

ASHTON'S SERVICE

*General Repair Work
Cars of All Makes*

LOCATED ON ROUTE 93

Phone 2304

JOHN D. HAHN

*Furnace And Metal Work
Roofing And Spouting*

BOX 37

CANAL FULTON, OHIO

**HAMMER CEMENT
BLOCK CO.**

Phone

2650

CANAL FULTON, OHIO

R. F. MURPHY & SONS

Water Well Drilling

CANAL FULTON

Phone

2261

Compliments of

EDNA'S BEAUTY SHOPPE

and

EARL'S BARBER SHOP

Phone

2212

CANAL FULTON

H. C. ALLISON

Water Well Drilling

**CANAL FULTON
OHIO**

Phone

2437

Compliments of

JERRY BROOMALL



Compliments of

MILROSE DRIVE-IN

Curb and Table Service

Located on Route 21 3 1/2 Miles North of Canal Fulton

ED PATRIS, MANAGER

**Congratulations
to the Class of 1949**

**THE CANTON HARDWARE
THE MASSILLON HARDWARE CO.**

Good hardware, like friendship, endures.

